

## Product datasheet for RC227000

### NFKBIL1 (NM\_001144963) Human Tagged ORF Clone

#### Product data:

Product Type:	Expression Plasmids
Product Name:	NFKBIL1 (NM_001144963) Human Tagged ORF Clone
Tag:	Myc-DDK
Symbol:	NFKBIL1
Synonyms:	IKBL; NFKBIL
Mammalian Cell Selection:	Neomycin
Vector:	pCMV6-Entry (PS100001)
E. coli Selection:	Kanamycin (25 ug/mL)
ORF Nucleotide Sequence:	>RC227000 representing NM_001144963 Red=Cloning site Blue=ORF Green=Tags(s)

TTTTGTAATACGACTCACTATAGGGCGGCCGGAATTCGTCGACTGGATCCGGTACCGAGGAGATCTGCC  
GCC**CGATCGCC**

ATGGCCTCCACTTCCCGCCGCAACGCCGAGAACGTCGCTTTCGTCGTTACTTGTCTGCAGGACGGCTGG  
TCCGGGCCAGGCCCTCCTCCAGCGACACCCAGGCCTCGATGTAGATGCTGGGCAGCCCCACCCTGCA  
CCGGCCCTGTGCCCGCCACGATGCCCTGCCCTGTGCTGCTTCCGGCTCGGGCTGACCCTGCCAC  
CAGGACCGCCATGGGACACGGCACTGCATGCTGCTGCCCGCCAGGGCCAGATGCCTACACCGATTCT  
TCCTCCCGCTGCTAAGCCGCTGTCCCTCCGCCATGGGAATAAAGAATAAGGATGGGAGACCCCTGGCCA  
AATTTTGGGCTGGGACCCCTGGGATTCTGCTGAAGAGGAGGAAGAAGATGATGCCTCAAGGAGCGG  
GAATGGAGACAGAAGCTCCAGGGTGATGCCTCCCATGAAACCCAGGAACCTGAGTCTTCTCAGCCTGGT  
CAGATCGCTGGCCCGGGAACATGCCAGAAAGTCCAGCAGCAGCAGCAGGAGAAGCAGAGGGATCCCGTCG  
ACCCCCACGTGCTGAGGGCTCCAGCCAGAGCTGGCGACAGCAGGAGGAGGAGCAGCGGCTCTCAGGGAG  
CGAGCCCCGGCCAAGGAGGAAGAGCTGCGTGAGAGCCGAGCCAGGAGGGCGCAGGAGGCTTAGGGGACC  
GAGAACCAAGCCAACCAGGGCCGGGCCAGGGAAGAGCACCCAGAGGAGCGGGGAGGGGCAGCCTCTG  
GCGATTTGGTGATGTGCCCTGGCCCTGCCCTGGGGAGGGGACCCAGAGGCCATGGCTGCAGCCCTGGTG  
GCCAGGGGCCCCCTTTGGAGGAACAGGGGCTCTGAGGAGTACTTGAGGGTCCAGAGGTCCCGCTGGC  
ACCCTGACCGCTTCTGCAGCGATTCCGAAGCCAGATTGAGACCTGGGAGCTGGGCGTGTGATGGGAGC  
AGTGACAGCCCTTCTCAGGCCCTGAATCGCCATGCAGAGGCCCTCAAG

**ACGCGT**ACGCGGCCGCTCGAGCAGAACTCATCTCAGAAGAGGATCTGGCAGCAAATGATATCCTGGATT  
ACAAGGATGACGACGATAAGGTTTAA



[View online »](#)

**Protein Sequence:** >RC227000 representing NM\_001144963  
Red=Cloning site Green=Tags(s)

MASTRRRQRERRFRYYLSAGRLVRAQALLQRHPGLDVDAGQPPPLHRACARHDAPALCLLLRLGADPAH  
 QDRHGDTALHAAARQGPDAYTDFLPLLSRCPSAMGIKNDGTPGQILGWGPPWDSAAAAEEDDASKER  
 EWRQKLQGDASHETQEPEFSAWSDDLAREHAQKCQQQREAEGRPPRAEGSSQSWRQQEERLRFRE  
 RARAKEEELRESRARRAQEALGDREPKPTRAGPREEHPRGAGRGLWRFGDVPWPCPGGGDPEAMAAALV  
 ARGPPLEEQGALRRYLVRVQVWHPDRFLQRFRSQIETWELGRVMGAVTALSQALNRHAEALK

TRTRPLEQKLISEEDLAANDILDYKDDDDKV

**Chromatograms:** [https://cdn.origene.com/chromatograms/ja1543\\_e09.zip](https://cdn.origene.com/chromatograms/ja1543_e09.zip)

**Restriction Sites:** SgfI-MluI

**Cloning Scheme:**



**ACCN:** NM\_001144963

**ORF Size:** 1029 bp

**OTI Disclaimer:** The molecular sequence of this clone aligns with the gene accession number as a point of reference only. However, individual transcript sequences of the same gene can differ through naturally occurring variations (e.g. polymorphisms), each with its own valid existence. This clone is substantially in agreement with the reference, but a complete review of all prevailing variants is recommended prior to use. [More info](#)

**OTI Annotation:** This clone was engineered to express the complete ORF with an expression tag. Expression varies depending on the nature of the gene.

**Components:** The ORF clone is ion-exchange column purified and shipped in a 2D barcoded Matrix tube containing 10ug of transfection-ready, dried plasmid DNA (reconstitute with 100 ul of water).

**Reconstitution Method:**

1. Centrifuge at 5,000xg for 5min.
2. Carefully open the tube and add 100ul of sterile water to dissolve the DNA.
3. Close the tube and incubate for 10 minutes at room temperature.
4. Briefly vortex the tube and then do a quick spin (less than 5000xg) to concentrate the liquid at the bottom.
5. Store the suspended plasmid at -20°C. The DNA is stable for at least one year from date of shipping when stored at -20°C.

**RefSeq:** [NM\\_001144963.2](#)

**RefSeq ORF:** 1032 bp

**Locus ID:** 4795

**UniProt ID:** [Q9UBC1](#)

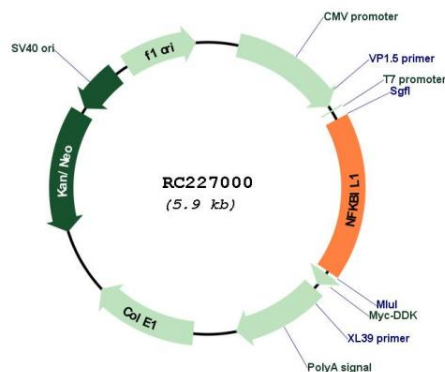
**Cytogenetics:** 6p21.33

**Protein Families:** Transcription Factors

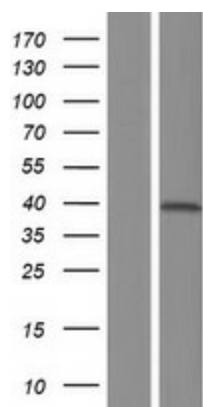
**MW:** 38.8 kDa

**Gene Summary:** This gene encodes a divergent member of the I-kappa-B family of proteins. Its function has not been determined. The gene lies within the major histocompatibility complex (MHC) class I region on chromosome 6. Multiple transcript variants encoding different isoforms have been found for this gene. [provided by RefSeq, Jan 2009]

## Product images:



Circular map for RC227000



Western blot validation of overexpression lysate (Cat# [LY428610]) using anti-DDK antibody (Cat# [TA50011-100]). Left: Cell lysates from untransfected HEK293T cells; Right: Cell lysates from HEK293T cells transfected with RC227000 using transfection reagent MegaTran 2.0 (Cat# [TT210002]).