

Product datasheet for RC226999

14-3-3 zeta (YWHAZ) (NM_001135700) Human Tagged ORF Clone

Product data:

Product Type:	Expression Plasmids
Product Name:	14-3-3 zeta (YWHAZ) (NM_001135700) Human Tagged ORF Clone
Tag:	Myc-DDK
Symbol:	14-3-3 zeta
Synonyms:	14-3-3-zeta; HEL-S-3; HEL-S-93; HEL4; KCIP-1; POPCHAS; YWHAD
Mammalian Cell Selection:	Neomycin
Vector:	pCMV6-Entry (PS100001)
E. coli Selection:	Kanamycin (25 ug/mL)
ORF Nucleotide Sequence:	>RC226999 representing NM_001135700 Red=Cloning site Blue=ORF Green=Tags(s)

TTTTGTAATACGACTCACTATAGGGCGGCCGGAATTCGTCGACTGGATCCGGTACCGAGGAGATCTGCC
GCC**CGATCGCC**

ATGGATAAAAAATGAGCTGGTTCAGAAGGCCAACTGGCCGAGCAGGCTGAGCGATATGATGACATGGCAG
CCTGCATGAAGTCTGTAAGTCTGAGCAAGGAGCTGAATTATCCAATGAGGAGAGGAATCTTCTCTCAGTTGC
TTATAAAAAATGTTGTAGGAGCCCGTAGGTCATCTTGGAGGGTCGCTCAAGTATTGAACAAAAGACGGAA
GGTGCTGAGAAAAACAGCAGATGGCTCGAGAATACAGAGAGAAAATTGAGACGGAGCTAAGAGATATCT
GCAATGATGTACTGTCTCTTTGGAAAAGTTCTTGATCCCAATGCTTACAAGCAGAGAGCAAAGTCTT
CTATTTGAAAATGAAAGGAGATTACTACGTTACTTGGCTGAGGTTGCCGCTGGTATGACAAGAAAGGG
ATTGTCGATCAGTCAACAAGCATACCAAGAAGCTTTTAAAATCAGCAAAAAGGAAATGCAACCAACAC
ATCCTATCAGACTGGGTCTGGCCCTTAAGTCTCTGTGTTCTATTATGAGATTCTGAACTCCCCAGAGAA
AGCCTGCTCTCTTGCAAAGACAGCTTTTGTGAAGCCATTGCTGAACTTGATACATTAAGTGAAGAGTCA
TACAAAGACAGCACGCTAATAATGCAATTACTGAGAGACAACCTTGACATTGTGGACATCGGATACCCAAG
GAGACGAAGCTGAAGCAGGAGAAGGAGGGGAAAAAT

ACGCGTACGCGGCCGCTCGAGCAGAACTCATCTCAGAAGAGGATCTGGCAGCAAATGATATCCTGGATT
ACAAGGATGACGACGATAAGGTTTAA



[View online »](#)

Protein Sequence: >RC226999 representing NM_001135700
 Red=Cloning site Green=Tags(s)

MDKNELVQKAKLAEQAERYDDMAACMKSVTEQGAELSNEERNLLSVAYKNVVGARRSSWRVVSSIEQKTE
 GAEKKQQMAREYREKIETELRDICNDVLSLLEKFLIPNASQAESKVFYLMKMGDYRYLAEVAAGDDKKG
 IVDQSQQAYQEAFEISKKEMQPTHPIRLGLALNFSVFYYEILNSPEKACSLAKTAFDEAIAELDTLSEES
 YKDSTLIMQLLRDNLTLWTSDTQGDEAEAGEGGEN

TRTRPLEQKLISEEDLAANDILDYKDDDDKV

Chromatograms: https://cdn.origene.com/chromatograms/mg2605_f05.zip

Restriction Sites: SgfI-MluI

Cloning Scheme:

Cloning sites used for ORF Shuttling:



* The last codon before the Stop codon of the ORF

ACCN: NM_001135700

ORF Size: 735 bp

OTI Disclaimer: The molecular sequence of this clone aligns with the gene accession number as a point of reference only. However, individual transcript sequences of the same gene can differ through naturally occurring variations (e.g. polymorphisms), each with its own valid existence. This clone is substantially in agreement with the reference, but a complete review of all prevailing variants is recommended prior to use. [More info](#)

OTI Annotation: This clone was engineered to express the complete ORF with an expression tag. Expression varies depending on the nature of the gene.

Components: The ORF clone is ion-exchange column purified and shipped in a 2D barcoded Matrix tube containing 10ug of transfection-ready, dried plasmid DNA (reconstitute with 100 ul of water).

Reconstitution Method:

1. Centrifuge at 5,000xg for 5min.
2. Carefully open the tube and add 100ul of sterile water to dissolve the DNA.
3. Close the tube and incubate for 10 minutes at room temperature.
4. Briefly vortex the tube and then do a quick spin (less than 5000xg) to concentrate the liquid at the bottom.
5. Store the suspended plasmid at -20°C. The DNA is stable for at least one year from date of shipping when stored at -20°C.

RefSeq: [NM_001135700.2](#)

RefSeq ORF: 738 bp

Locus ID: 7534

UniProt ID: [P63104](#)

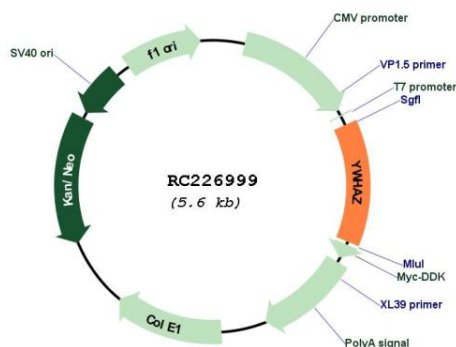
Cytogenetics: 8q22.3

Protein Pathways: Cell cycle, Neurotrophin signaling pathway, Oocyte meiosis, Pathogenic Escherichia coli infection

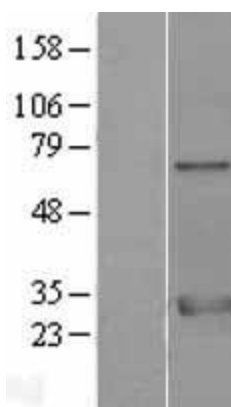
MW: 27.6 kDa

Gene Summary: This gene product belongs to the 14-3-3 family of proteins which mediate signal transduction by binding to phosphoserine-containing proteins. This highly conserved protein family is found in both plants and mammals, and this protein is 99% identical to the mouse, rat and sheep orthologs. The encoded protein interacts with IRS1 protein, suggesting a role in regulating insulin sensitivity. Several transcript variants that differ in the 5' UTR but that encode the same protein have been identified for this gene. [provided by RefSeq, Oct 2008]

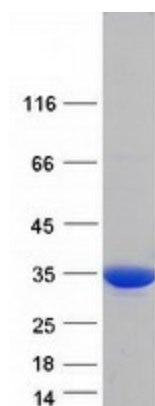
Product images:



Circular map for RC226999



Western blot validation of overexpression lysate (Cat# [LY427676]) using anti-DDK antibody (Cat# [TA50011-100]). Left: Cell lysates from untransfected HEK293T cells; Right: Cell lysates from HEK293T cells transfected with [RC227049] using transfection reagent MegaTran 2.0 (Cat# [TT210002]).



Coomassie blue staining of purified YWHAZ protein (Cat# [TP326999]). The protein was produced from HEK293T cells transfected with YWHAZ cDNA clone (Cat# RC226999) using MegaTran 2.0 (Cat# [TT210002]).