

## Product datasheet for RC226991

### Poliovirus Receptor (PVR) (NM\_001135768) Human Tagged ORF Clone

#### Product data:

Product Type:	Expression Plasmids
Product Name:	Poliovirus Receptor (PVR) (NM_001135768) Human Tagged ORF Clone
Tag:	Myc-DDK
Symbol:	Poliovirus Receptor
Synonyms:	CD155; HVED; Necl-5; NECL5; PVS; TAGE4
Mammalian Cell Selection:	Neomycin
Vector:	pCMV6-Entry (PS100001)
E. coli Selection:	Kanamycin (25 ug/mL)
ORF Nucleotide Sequence:	>RC226991 representing NM_001135768 Red=Cloning site Blue=ORF Green=Tags(s)

TTTTGTAATACGACTCACTATAGGGCGGCCGGAATTCGTCGACTGGATCCGGTACCGAGGAGATCTGCC  
GCC**CGATCGCC**

ATGGCCCGAGCCATGGCCCGCGTGGCCGCTGCTGCTGGTGGCGCTACTGGTGTCTCCTGGCCACCC  
CAGGAACCGGGACGTCGTCGTCAGGCGCCACCCAGGTGCCCGGCTTCTTGGGCGACTCCGTGACGCT  
GCCCTGTACCTACAGGTGCCAACATGGAGGTGACGCATGTGTCACAGCTGACTGGGCGCGGCATGGT  
GAATCTGGCAGCATGGCCGTCTCCACCAAACGCAGGGCCCCAGCTATTCGGAGTCAAACGGCTGGAAT  
TCGTGGCAGCCAGACTGGGCGCGGAGCTGCGGAATGCCTCGCTGAGGATGTTCCGGTTGCGCGTAGAGGA  
TGAAGGCAACTACACCTGCCTGTTTCGTACGTTCCCGCAGGGCAGCAGGAGCGTGGATATCTGGCTCCGA  
GTGCTTGCCAAGCCCCAGAACACAGCTGAGGTTTCAAGGTTCCAGCTCACTGGAGAGCCAGTGCCCATGG  
CCCCTGCGTCTCCACAGGGGTCGCCCCAGCCAAATCACCTGGCACTCAGACCTGGGCGGGATGCC  
CAATACGAGCCAGGTGCCAGGGTTCCTGTCTGGCACAGTCACTGTACCAGCCTCTGGATATTGGTGCC  
TCAAGCCAGGTGGACGGCAAGATGTGACCTGCAAGGTGGAGCACGAGAGCTTTGAGAAGCCTCAGCTGC  
TGACTGTGAACCTCACCGTGTACTACCCCCAGAGGTATCCATCTCTGGCTATGATAAACAAGTGGTACCT  
TGGCCAGAATGAGGCCACCCTGACCTGCGATGCTCGCAGCAACCCAGAGCCCACAGGCTATAATTGGAGC  
ACGACCATGGTCCCCTGCCACCCTTTGCTGTGGCCAGGGCGCCAGCTCCTGATCCGCTCCTGTGGACA  
AACCAATCAACACAACCTTAATCTGCAACGTACCAATGCCCTAGGAGCTCGCCAGGCAGAACTGACCGT  
CCAGGTCAAAGAGGGACCTCCCAGTGAGCACTCAGGTACAGAGCATGCCAGCGCCTCAGCTAATGGCAT  
GTCTCTATTAGCTGTGAGCAGAGAGAACAGCTCTCCAGGATCCACAGACAGAGGGCACAAGG

**ACGCGT**ACGCGGCCGCTCGAGCAGAACTCATCTCAGAAGAGGATCTGGCAGCAAATGATATCCTGGATT  
ACAAGGATGACGACGATAAGGTTAA



[View online »](#)

**Protein Sequence:** >RC226991 representing NM\_001135768  
Red=Cloning site Green=Tags(s)

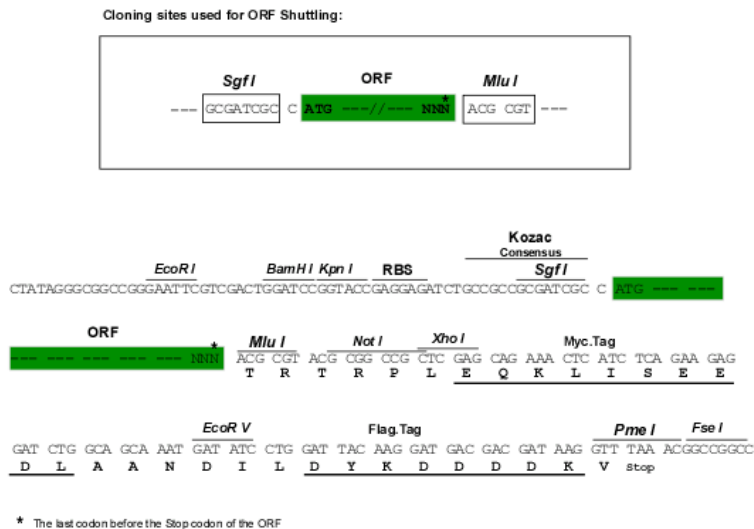
MARAMAAWPLLLVALLVLSWPPPGTGDVVVQAPTQVPGFLGDSVTLPCYLQVPNMEVTHVSQLTWARHG  
 ESGSMVVFHQQTQGPSYSESKRLEFVAARLGAELRNASLRMFLRVEDEGNYTCLFVTFPQGSRSVDIWL  
 VLAKPQNTAEVQKVQLTGEPVPMARCVSTGRRPPAQITWHSDLGMPNTSQVPGFLSGTIVTSLWILVP  
 SSQVDGKNVTCKVEHESFEKPOLLVNLTVYYPPEVSIISGYDNNWYLQNEATLTCDARSNPEPTGYNWS  
 TTMGPLPPFAVAQGAQLLIRPVDKPINTTLICNVTNALGARQAELTVQVKEGPPSEHSGTEHASASANGH  
 VSYSAVSRENSSSQDPQTEGTR

TRTRPLEQKLISEEDLAANDILDYKDDDDKV

**Chromatograms:** [https://cdn.origene.com/chromatograms/mk8055\\_d06.zip](https://cdn.origene.com/chromatograms/mk8055_d06.zip)

**Restriction Sites:** SgfI-MluI

**Cloning Scheme:**



**ACCN:** NM\_001135768

**ORF Size:** 1116 bp

**OTI Disclaimer:** The molecular sequence of this clone aligns with the gene accession number as a point of reference only. However, individual transcript sequences of the same gene can differ through naturally occurring variations (e.g. polymorphisms), each with its own valid existence. This clone is substantially in agreement with the reference, but a complete review of all prevailing variants is recommended prior to use. [More info](#)

**OTI Annotation:** This clone was engineered to express the complete ORF with an expression tag. Expression varies depending on the nature of the gene.

**Components:** The ORF clone is ion-exchange column purified and shipped in a 2D barcoded Matrix tube containing 10ug of transfection-ready, dried plasmid DNA (reconstitute with 100 ul of water).

- Reconstitution Method:**
1. Centrifuge at 5,000xg for 5min.
  2. Carefully open the tube and add 100ul of sterile water to dissolve the DNA.
  3. Close the tube and incubate for 10 minutes at room temperature.
  4. Briefly vortex the tube and then do a quick spin (less than 5000xg) to concentrate the liquid at the bottom.
  5. Store the suspended plasmid at -20°C. The DNA is stable for at least one year from date of shipping when stored at -20°C.

**RefSeq:** [NM\\_001135768.3](#)

**RefSeq ORF:** 1119 bp

**Locus ID:** 5817

**UniProt ID:** [P15151](#)

**Cytogenetics:** 19q13.31

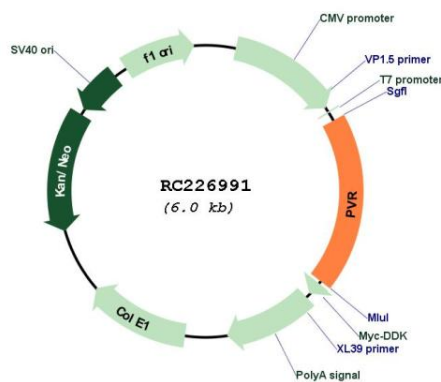
**Protein Families:** Druggable Genome, Transmembrane

**Protein Pathways:** Cell adhesion molecules (CAMs)

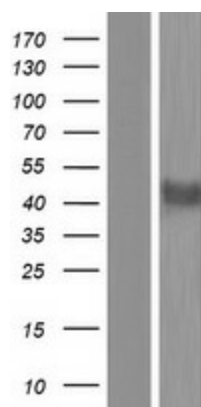
**MW:** 39.9 kDa

**Gene Summary:** The protein encoded by this gene is a transmembrane glycoprotein belonging to the immunoglobulin superfamily. The external domain mediates cell attachment to the extracellular matrix molecule vitronectin, while its intracellular domain interacts with the dynein light chain Tctex-1/DYNLT1. The gene is specific to the primate lineage, and serves as a cellular receptor for poliovirus in the first step of poliovirus replication. Multiple transcript variants encoding different isoforms have been found for this gene. [provided by RefSeq, Oct 2008]

### Product images:



Circular map for RC226991



Western blot validation of overexpression lysate (Cat# [LY427700]) using anti-DDK antibody (Cat# [TA50011-100]). Left: Cell lysates from untransfected HEK293T cells; Right: Cell lysates from HEK293T cells transfected with RC226991 using transfection reagent MegaTran 2.0 (Cat# [TT210002]).