

Product datasheet for **RC226988**

Parvin gamma (PARVG) (NM_001137605) Human Tagged ORF Clone

Product data:

Product Type:	Expression Plasmids
Product Name:	Parvin gamma (PARVG) (NM_001137605) Human Tagged ORF Clone
Tag:	Myc-DDK
Symbol:	Parvin gamma
Mammalian Cell Selection:	Neomycin
Vector:	pCMV6-Entry (PS100001)
E. coli Selection:	Kanamycin (25 ug/mL)
ORF Nucleotide Sequence:	>RC226988 ORF sequence Red=Cloning site Blue=ORF Green=Tags(s)

TTTTGTAATACGACTCACTATAGGGCGGCCGGAATTCGTCGACTGGATCCGGTACCGAGGAGATCTGCC
GCC**CGATCGCC**

ATGGAGCCGGAGTTCTTGTACGACCTGCTGCAGCTCCCCAAGGGGTGGAGCCCCAGCGGAGGAGGAGC
TCTCAAAGGAGGAAAGAAGAAATACCTGCCACCCACTTCCCAGGAGACCCAAATTTGAAGAAGTGA
GAAGGTGTTGATGGAGTGGATCAATGCCACTCTCTCCCCGAGCACATTGTGGTCCGCAGCCTGGAGGAG
GACATGTTGACGGGCTCATCTACACCACCTATCCAGAGGCTGGCGGCCTCAAGCTGGAAGCAGAGG
ACATCGCCCTGACAGCCACAAGCCAGAAGCACAAGCTCACAGTGGTCTGGAGGCCGTAACCCGGAGTCT
GCAGCTGGAGGAGTGGCAGGCCAAGTGGAGCGTGGAGAGCATCTTCAACAAGGACCTGTTGTCTACCCTG
CACCTCCTTGTGGCCCTGGCCAAGCGCTTCCAGCCGACCTCTCCCTCCAACCAACGTCCAGGTGGAGG
TCATCACTATCGAGAGCACAAAAGTGGTCTGAAGTCAGAGAAGTTGGTGGAACAGCTCACTGAATACAG
CACAGACAAGGACGAGCCTCAAAGGACGTCTTTGATGAATATTTAAGCTGGCTCCGGAGAAAAGTGAAC
GCAGTGAAAGAGGCCATCGTGAACCTTGTCAACCAGAAGCTGGACCGCCTGGCCTGTCTGTGCAGAATC
TGGACACCCAGTTTGAGATGGGGTCATCTTACTTGTCTGATTGGACAACCTGAAGGCTTCTTCTGCA
CTTAAAGGAATCTACCTCACTCCCAACTCTCCTGCAGAAATGCTGCACAACGTACCCTGGCGCTGGAG
CTGCTGAAGGACGAGGGCCTGCTCAGCTGCCCTGTCAGCCCTGAAGATATCGTGAACAAGGATGCCAAGA
GCACACTGCGGGTCTCTATGGTCTGTTCTGCAAGCACACGCAGAAGGCACACAGGGACAGGACGCCCA
TGGAGCCCCGAAT

ACGCGTACGCGGCCGCTCGAGCAGAAACTCATCTCAGAAGAGGATCTGGCAGCAAATGATATCCTGGATT
ACAAGGATGACGACGATAAGGTTTAA



[View online »](#)

Protein Sequence: >RC226988 protein sequence
 Red=Cloning site Green=Tags(s)

MEPEFLYDLLQLPKGVPEPPAEEELSKGGKKKYLPPTSRKDPKFEELQKVLMEWINATLLPEHIVVRSLEE
 DMFDGLILHHLFQRLAALKLEAEDIALTATSQKHKLTVVLEAVNRSLEEWQAKWSVESIFNKDLLSTL
 HLLVALAKRFQPDLSLPTNVQVEVITIESTKSLKSEKLVEQLTEYSTDKDEPPKDVDELFLKLAPEKVN
 AVKEAIVNFVNQKLDRLGLSVQNLDTQFADGVILLLLIGQLEGFFLHLKEFYLTNPSPAEMLHNVTLAL
 LLKDEGLLSCPVSPEDIYNKDAKSTLRVLYGLFCKHTQKAHRDRTPHGAPN

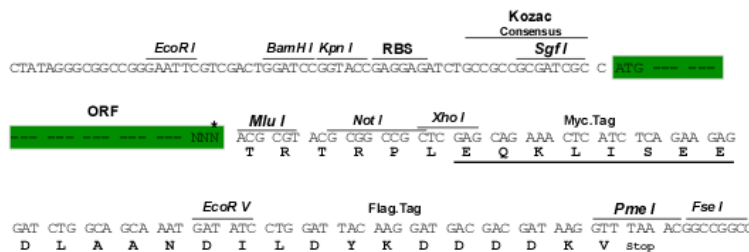
TRTRPLEQKLISEEDLAANDILDYKDDDDKV

Chromatograms: https://cdn.origene.com/chromatograms/mk6519_b01.zip

Restriction Sites: SgfI-MluI

Cloning Scheme:

Cloning sites used for ORF Shuttling:



* The last codon before the Stop codon of the ORF

ACCN: NM_001137605

ORF Size: 993 bp

OTI Disclaimer: The molecular sequence of this clone aligns with the gene accession number as a point of reference only. However, individual transcript sequences of the same gene can differ through naturally occurring variations (e.g. polymorphisms), each with its own valid existence. This clone is substantially in agreement with the reference, but a complete review of all prevailing variants is recommended prior to use. [More info](#)

OTI Annotation: This clone was engineered to express the complete ORF with an expression tag. Expression varies depending on the nature of the gene.

Components: The ORF clone is ion-exchange column purified and shipped in a 2D barcoded Matrix tube containing 10ug of transfection-ready, dried plasmid DNA (reconstitute with 100 ul of water).

Reconstitution Method:

1. Centrifuge at 5,000xg for 5min.
2. Carefully open the tube and add 100ul of sterile water to dissolve the DNA.
3. Close the tube and incubate for 10 minutes at room temperature.
4. Briefly vortex the tube and then do a quick spin (less than 5000xg) to concentrate the liquid at the bottom.
5. Store the suspended plasmid at -20°C. The DNA is stable for at least one year from date of shipping when stored at -20°C.

RefSeq: [NM_001137605.2](#), [NP_001131077.1](#)

RefSeq Size: 3475 bp

RefSeq ORF: 996 bp

Locus ID: 64098

UniProt ID: [Q9HBI0](#)

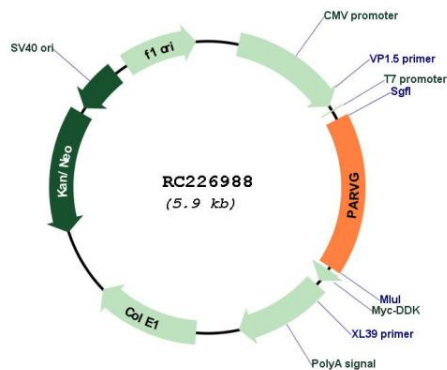
Cytogenetics: 22q13.31

Protein Pathways: Adherens junction, Arrhythmogenic right ventricular cardiomyopathy (ARVC), Dilated cardiomyopathy, Focal adhesion, Hypertrophic cardiomyopathy (HCM), Leukocyte transendothelial migration, Pathogenic Escherichia coli infection, Regulation of actin cytoskeleton, Tight junction, Vibrio cholerae infection, Viral myocarditis

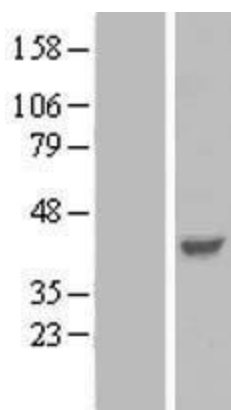
MW: 37.5 kDa

Gene Summary: Members of the parvin family, including PARVG, are actin-binding proteins associated with focal contacts.[supplied by OMIM, Aug 2004]

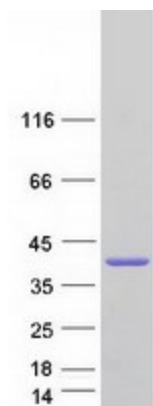
Product images:



Circular map for RC226988



Western blot validation of overexpression lysate (Cat# [LY427945]) using anti-DDK antibody (Cat# [TA50011-100]). Left: Cell lysates from untransfected HEK293T cells; Right: Cell lysates from HEK293T cells transfected with [RC227051] using transfection reagent MegaTran 2.0 (Cat# [TT210002]).



Coomassie blue staining of purified PARVG protein (Cat# [TP326988]). The protein was produced from HEK293T cells transfected with PARVG cDNA clone (Cat# RC226988) using MegaTran 2.0 (Cat# [TT210002]).