

Product datasheet for **RC226986**

LGALS12 (NM_001142538) Human Tagged ORF Clone

Product data:

Product Type: Expression Plasmids
Product Name: LGALS12 (NM_001142538) Human Tagged ORF Clone
Tag: Myc-DDK
Symbol: LGALS12
Synonyms: GAL12; GRIP1
Mammalian Cell Selection: Neomycin
Vector: pCMV6-Entry (PS100001)
E. coli Selection: Kanamycin (25 ug/mL)
ORF Nucleotide Sequence: >RC226986 representing NM_001142538
Red=Cloning site Blue=ORF Green=Tags(s)

TTTTGTAATACGACTCACTATAGGGCGGCCGGAATTCGTCGACTGGATCCGGTACCGAGGAGATCTGCC
GCC**CGGATCGCC**

ATGGTCATGCTGCAAGGAGTGGTCCCTCTAGATGCACACAGGTTTCAGGTGGACTTCCAGTGTGGCTGCA
GCCTGTGTCCCCGGCCAGATATCGCCTTCCACTTCAACCCTCGTTCATACCACCAAGCCCCATGTCAT
CTGCAACACCCTGCATGGTGGACGCTGGCAAAGGGAGGCCGGTGGCCCCACCTGGCCCTGCGAAGAGGC
TCCAGCTTCTCATCCTCTTTCTTTCGGGAATGAGGAAGTGAAGGTGAGTGTGAATGGACAGCACTTTC
TCCACTTCGGCTACCGGCTCCCCTGTCTCATGTGGACACGCTGGGTATATTTGGTGACATCCTGGTAGA
GGCTGTTGGATTCTGAACATCAATCCATTTGTGGAGGGCAGCAGAGAGTACCCAGCTGGACATGAGGTG
CCCTGCTCACATGCTCTTCCCCAGGGTCTCTCGCCTGGGCAGGTATCATAGTACGGGGACTGGTCTTGC
AAGAGCCGAAGCATTCTTACTGTGAGCCTGAGGGACCAGGCTGCCATGCTCCTGTGACACTCAGGGCCTC
CTTCGACAGACAGAAGCTTGGCCTGGATCTCCCGCTGGGGGCAGAAAGAACTGATCTCAGCCCCCTTCTC
TTTTACCCCAGAGATCTTTGAGGTGCTGCTCCTGTTCCAGGAGGGAGGGCTGAAGCTGGCGCTCAATG
GGCAGGGGCTGGGGGCCACCAGCATGAACCAGCAGGCCCTGGAGCAGCTGCGGGAGCTCCGGATCAGTGG
AAGTGCCAGCTCTACTGTGTCCACTCC

ACGCGTACGCGGCCGCTCGAGCAGAACTCATCTCAGAAGAGGATCTGGCAGCAAATGATATCCTGGATT
ACAAGGATGACGACGATAAGGTTTAA



[View online »](#)

Protein Sequence: >RC226986 representing NM_001142538
Red=Cloning site Green=Tags(s)

MVMLQGVVPLDAHRFQVDFQCGCSLCPRPDIAHFHFNPRFHTTKPHVICNTLHGGRWQREARWPHLALRRG
 SSFLILFLFGNEEVKVSVNGQHFLHFRYRLPLSHVDTLGFIDILVEAVGFLNINPFVEGSREYPAGHEV
 PCSHALPQGLSPGQV I I VRGLVLQEPKHFTVSLRDQAHAHPVTLRASFA DRTLAWISRWQKKLISAPFL
 FYPQRF FEV LLLFQEGGLKLALNGQGLGATSMNQALEQLREL R ISG SVQLYCVHS

TRTRPLEQKLISEEDLAANDILDYKDDDDKV

Chromatograms: https://cdn.origene.com/chromatograms/mk8048_a08.zip

Restriction Sites: SgfI-MluI

Cloning Scheme:

Cloning sites used for ORF Shuttling:



* The last codon before the Stop codon of the ORF

ACCN: NM_001142538

ORF Size: 798 bp

OTI Disclaimer: The molecular sequence of this clone aligns with the gene accession number as a point of reference only. However, individual transcript sequences of the same gene can differ through naturally occurring variations (e.g. polymorphisms), each with its own valid existence. This clone is substantially in agreement with the reference, but a complete review of all prevailing variants is recommended prior to use. [More info](#)

OTI Annotation: This clone was engineered to express the complete ORF with an expression tag. Expression varies depending on the nature of the gene.

Components: The ORF clone is ion-exchange column purified and shipped in a 2D barcoded Matrix tube containing 10ug of transfection-ready, dried plasmid DNA (reconstitute with 100 ul of water).

Reconstitution Method:

1. Centrifuge at 5,000xg for 5min.
2. Carefully open the tube and add 100ul of sterile water to dissolve the DNA.
3. Close the tube and incubate for 10 minutes at room temperature.
4. Briefly vortex the tube and then do a quick spin (less than 5000xg) to concentrate the liquid at the bottom.
5. Store the suspended plasmid at -20°C. The DNA is stable for at least one year from date of shipping when stored at -20°C.

RefSeq: [NM_001142538.2](#)

RefSeq ORF: 801 bp

Locus ID: 85329

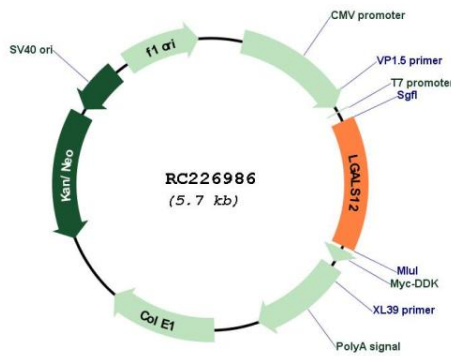
UniProt ID: [Q96DT0](#)

Cytogenetics: 11q12.3

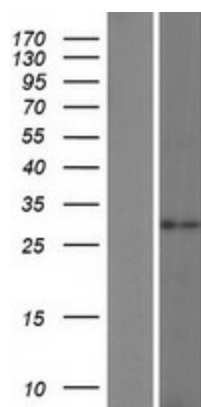
MW: 29.8 kDa

Gene Summary: This gene encodes a member of the galectin superfamily, a group of beta-galactoside-binding proteins with conserved carbohydrate recognition domains. The related mouse protein is a primary regulator of the early stages of adipose tissue development. Alternatively spliced transcript variants encoding different isoforms have been described. [provided by RefSeq, May 2010]

Product images:



Circular map for RC226986



Western blot validation of overexpression lysate (Cat# [LY428159]) using anti-DDK antibody (Cat# [TA50011-100]). Left: Cell lysates from untransfected HEK293T cells; Right: Cell lysates from HEK293T cells transfected with RC226986 using transfection reagent MegaTran 2.0 (Cat# [TT210002]).