

## Product datasheet for **RC226981**

### NANOG neighbor homeobox (NANOGNB) (NM\_001145465) Human Tagged ORF Clone

#### Product data:

**Product Type:** Expression Plasmids  
**Product Name:** NANOG neighbor homeobox (NANOGNB) (NM\_001145465) Human Tagged ORF Clone  
**Tag:** Myc-DDK  
**Symbol:** NANOG neighbor homeobox  
**Mammalian Cell Selection:** Neomycin  
**Vector:** pCMV6-Entry (PS100001)  
**E. coli Selection:** Kanamycin (25 ug/mL)  
**ORF Nucleotide Sequence:** >RC226981 representing NM\_001145465  
 Red=Cloning site Blue=ORF Green=Tags(s)

TTTTGTAATACGACTCACTATAGGGCGGCCGGAATTCGTCGACTGGATCCGGTACCGAGGAGATCTGCCGCC**CGCATCGCC**

ATGCACCGGGCGCGGTGGCTCACGCCTGTAATCCAGCACTTTGGGAGGCCGAGGCGGGCAGATCACGAG  
 GTCAGGAAATCGAGACCATCTTGGCTAACAGAAACAATCAGCTATGCCTTGGGATCAAGATCCAGAAC  
 ATCAACTGGAAATTACAGTGAAGATGAACAAAATGGAAAGCAGAAATGGAGAGAAGAAGGAGAAGCAGGC  
 AGAAAGAGAGAACGAGAAAAAGAAGAAAAACGAAAGGAGCTGCAAGATGAACAGGAAAAACAAAGGA  
 AAAGGGAAAAATGAGAAACAGAAACAGTATCCCGAGAAAGATTAGTCAGCAAATCCCTCATGCACTCT  
 CTGGGCAAGTTTAAGTTAAACAGGTGCCCACTATACAAGAGAGTCTATCACTGTCATTTGAATTTGAC  
 ATGACACATAAACAGATAAGTCAATGGTTTGTAAACGAGGAAGAAATATAATAAGAAATGTCCAAGA  
 GAAAGCATAAGAAAAACATATGAGATGGAGATCTCTGTGTTGCCAAGGCTGGTCTCGAACTCTGCCCT  
 CAAG

**ACGCGT**ACGCGGCCGCTCGAGCAGAACTCATCTCAGAAGAGGATCTGGCAGCAAATGATATCTGGATT  
 ACAAGGATGACGACGATAAGGTTTAA

**Protein Sequence:** >RC226981 representing NM\_001145465  
 Red=Cloning site Green=Tags(s)

MHRARWLTPVIPALWEAEAGRSRQEIETILANKKQSAMPWDQDPEQSTGNYSDEQNGKQKWREEGEAG  
 RKREKEKEKNEKELQDEQENKRKRENEKQKQYPEKRLVSKSLMHTLWAKFKLNRCPTIQESLSLSEFFD  
 MTHKQISQWFCRKKYNKEMSKRKHKKHMRWRLCCQGSRTPALK

**TR**TRPLEQKLISEEDLAANDILDYKDDDDKV

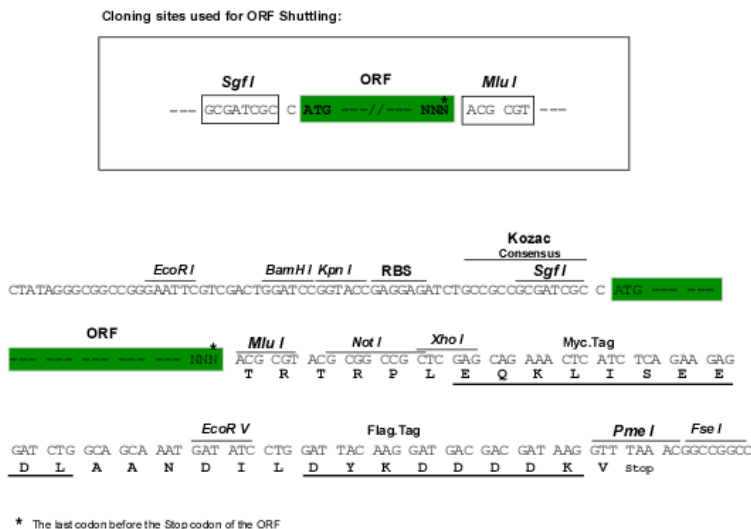
**Chromatograms:** [https://cdn.origene.com/chromatograms/mk8032\\_f08.zip](https://cdn.origene.com/chromatograms/mk8032_f08.zip)



View online »

**Restriction Sites:** SgfI-MluI

**Cloning Scheme:**



**ACCN:** NM\_001145465

**ORF Size:** 564 bp

**OTI Disclaimer:** The molecular sequence of this clone aligns with the gene accession number as a point of reference only. However, individual transcript sequences of the same gene can differ through naturally occurring variations (e.g. polymorphisms), each with its own valid existence. This clone is substantially in agreement with the reference, but a complete review of all prevailing variants is recommended prior to use. [More info](#)

**OTI Annotation:** This clone was engineered to express the complete ORF with an expression tag. Expression varies depending on the nature of the gene.

**Components:** The ORF clone is ion-exchange column purified and shipped in a 2D barcoded Matrix tube containing 10ug of transfection-ready, dried plasmid DNA (reconstitute with 100 ul of water).

**Reconstitution Method:**

1. Centrifuge at 5,000xg for 5min.
2. Carefully open the tube and add 100ul of sterile water to dissolve the DNA.
3. Close the tube and incubate for 10 minutes at room temperature.
4. Briefly vortex the tube and then do a quick spin (less than 5000xg) to concentrate the liquid at the bottom.
5. Store the suspended plasmid at -20°C. The DNA is stable for at least one year from date of shipping when stored at -20°C.

**RefSeq:** [NM\\_001145465.1](#), [NP\\_001138937.1](#)

**RefSeq ORF:** 567 bp

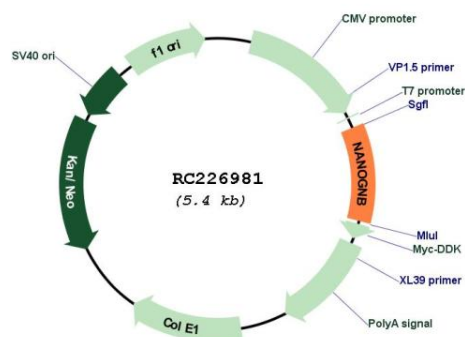
**Locus ID:** 360030

**UniProt ID:** [Q7Z5D8](#)

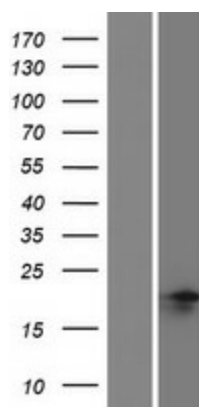
**Cytogenetics:** 12p13.31

MW: 22.6 kDa

## Product images:



Circular map for RC226981



Western blot validation of overexpression lysate (Cat# [LY428908]) using anti-DDK antibody (Cat# [TA50011-100]). Left: Cell lysates from untransfected HEK293T cells; Right: Cell lysates from HEK293T cells transfected with RC226981 using transfection reagent MegaTran 2.0 (Cat# [TT210002]).