

Product datasheet for **RC226974**

LGALS12 (NM_001142536) Human Tagged ORF Clone

Product data:

Product Type: Expression Plasmids
Product Name: LGALS12 (NM_001142536) Human Tagged ORF Clone
Tag: Myc-DDK
Symbol: LGALS12
Synonyms: GAL12; GRIP1
Mammalian Cell Selection: Neomycin
Vector: pCMV6-Entry (PS100001)
E. coli Selection: Kanamycin (25 ug/mL)
ORF Nucleotide Sequence: >RC226974 representing NM_001142536
Red=Cloning site Blue=ORF Green=Tags(s)

TTTTGTAATACGACTCACTATAGGGCGGCCGGAATTCGTCGACTGGATCCGGTACCGAGGAGATCTGCC
 GCCCGGATCGCC

ATGAGTCAGCCCAGTGGGGCAGGGCTCCTGGAACGAGGATCTACAGTTGGAGTTGCCCCACTGTCATGT
 CACCTGGAGAAAACTGGACCAATTCCTGACAGCTTCATTCTGCAACCACCAGTCTCCACCCGGTGGT
 TCCTTATGTCACGACGATTTTTGGAGGCCTGCATGCAGGCAAGATGGTCATGCTGCAAGGAGTGGTCCCT
 CTAGATGCACACAGGTTTCAGGTGGACTTCCAGTGTGGCTGCAGCCTGTGTCCCCGGCCAGATATCGCT
 TCCACTTCAACCCTCGTTCCATACCACCAAGCCCATGTCATCTGCAACACCCTGCATGGTGGACGCTG
 GCAAAGGGAGGCCCGGTGGCCCCACCTGGCCCTGCGAAGAGGCTCCAGCTTCCATCCTCTTTCTCTTC
 GGAATGAGGAAGTGAAGGTGAGTGTGAATGGACAGCACTTTCTCCACTCCGGTACCGGCTCCCACTGT
 CTCATGTGGACACGCTGGGTATATTTGGTACATCCTGGTAGAGGCTGTTGGATTCTGAACATCAATCC
 ATTTGTGGAGGGCAGCAGAGAGTACCCAGCTGGACATGAGGTGCCCTGCTCACATGCTCTTCCCCAGGGT
 CTCTCGCTGGGCAGGTATCATAGTACGGGACTGGTCTTGCAAGAGCCGAAGCATTTTACTGTGAGCC
 TGAGGGACCAGGCTGCCATGCTCCTGTGACACTCAGGGCCTCCTTCGCAGACAGAACTCGGCCTGGAT
 CTCCCCTGGGGCAGAAGAACTGATCTCAGCCCCCTTCTCTTTACCCCCAGAGATTCTTTGAGGTG
 CTGCTCCTGTTCCAGGAGGGAGGGCTGAAGCTGGCGCTCAATGGGCAGGGGCTGGGGCCACCAGCATGA
 ACCAGCAGGCCCTGGAGCAGCTGCGGGAGCTCCGGATCAGTGAAGTGTCCAGCTCTACTGTGCCACTC
 C

ACGCGTACGCGGCCGCTCGAGCAGAACTCATCTCAGAAGAGGATCTGGCAGCAATGATATCCTGGATT
 ACAAGGATGACGACGATAAGGTTTAA



[View online »](#)

Protein Sequence: >RC226974 representing NM_001142536
Red=Cloning site Green=Tags(s)

MSQPSSGGRAPGTRIYSWSCPTVMSPGKLDPIPDSFILQPPVFHPVVPYVTTIFGGLHAGKMVMLQGVVP
 LDAHFRQVDFQCGCSLCPRPDI AFHFNPRFHHTTKPHVICNTLHGGRWQREARWPHLALRRGSSFLILFLF
 GNEEVKYSVNGQHFLHFRYRLPLSHVDTLGIFGDILVEAVGFLNINPFVEGSREYPAGHEVPCSHALPQG
 LSPGQVIIVRGLVLQEPKHFTVSLRDQAAHAPVTLRASFA DRTLAWISRWGQKKLISAPFLFYPRFFFEV
 LLLFQEGGLKLALNGQLGATSMNQQALEQLRELRLISGSVQLYCVHS

TRTRPLEQKLISEEDLAANDILDYKDDDDKV

Chromatograms: https://cdn.origene.com/chromatograms/mk8052_e03.zip

Restriction Sites: SgfI-MluI

Cloning Scheme:



ACCN: NM_001142536

ORF Size: 981 bp

OTI Disclaimer: The molecular sequence of this clone aligns with the gene accession number as a point of reference only. However, individual transcript sequences of the same gene can differ through naturally occurring variations (e.g. polymorphisms), each with its own valid existence. This clone is substantially in agreement with the reference, but a complete review of all prevailing variants is recommended prior to use. [More info](#)

OTI Annotation: This clone was engineered to express the complete ORF with an expression tag. Expression varies depending on the nature of the gene.

Components: The ORF clone is ion-exchange column purified and shipped in a 2D barcoded Matrix tube containing 10ug of transfection-ready, dried plasmid DNA (reconstitute with 100 ul of water).

Reconstitution Method:

1. Centrifuge at 5,000xg for 5min.
2. Carefully open the tube and add 100ul of sterile water to dissolve the DNA.
3. Close the tube and incubate for 10 minutes at room temperature.
4. Briefly vortex the tube and then do a quick spin (less than 5000xg) to concentrate the liquid at the bottom.
5. Store the suspended plasmid at -20°C. The DNA is stable for at least one year from date of shipping when stored at -20°C.

RefSeq: [NM_001142536.1](#), [NP_001136008.1](#)

RefSeq ORF: 918 bp

Locus ID: 85329

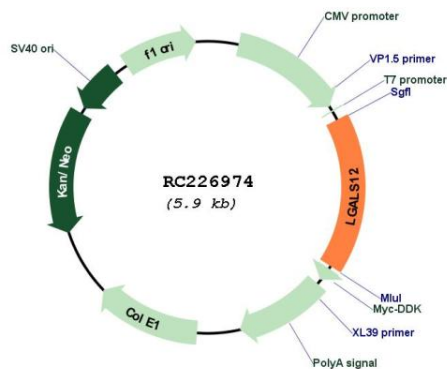
UniProt ID: [Q96DT0](#)

Cytogenetics: 11q12.3

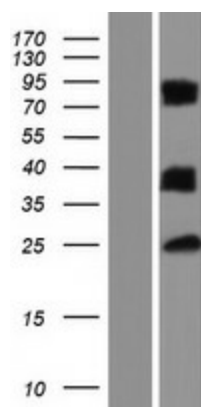
MW: 36.3 kDa

Gene Summary: This gene encodes a member of the galectin superfamily, a group of beta-galactoside-binding proteins with conserved carbohydrate recognition domains. The related mouse protein is a primary regulator of the early stages of adipose tissue development. Alternatively spliced transcript variants encoding different isoforms have been described. [provided by RefSeq, May 2010]

Product images:



Circular map for RC226974



Western blot validation of overexpression lysate (Cat# [LY428157]) using anti-DDK antibody (Cat# [TA50011-100]). Left: Cell lysates from untransfected HEK293T cells; Right: Cell lysates from HEK293T cells transfected with RC226974 using transfection reagent MegaTran 2.0 (Cat# [TT210002]).