

Product datasheet for **RC226968**

PRMT3 (NM_001145166) Human Tagged ORF Clone

Product data:

Product Type:	Expression Plasmids
Product Name:	PRMT3 (NM_001145166) Human Tagged ORF Clone
Tag:	Myc-DDK
Symbol:	PRMT3
Synonyms:	HRMT1L3
Mammalian Cell Selection:	Neomycin
Vector:	pCMV6-Entry (PS100001)
E. coli Selection:	Kanamycin (25 ug/mL)



[View online »](#)

ORF Nucleotide Sequence:

>RC226968 representing NM_001145166
 Red=Cloning site Blue=ORF Green=Tags(s)

TTTTGTAATACGACTCACTATAGGGCGGCCGGAATTCGTCGACTGGATCCGGTACCGAGGAGATCTGCC
 GCC**CGCATCGCC**

ATGTGCTCGTTAGCGTCAGGCGCTACCGGTTATTCACATCTGCTGAAGAAACATTTTCACACTGTAAGTC
 TGAGCATCAGTTTAAATATTGACAGCATGGTTCATAAACATGAATCCTACAGTTGAGTACATGAATCCAT
 ATACAACCCAGTGCCTTGGGAGAAAGAAGATTTGAAGCCAGTATTAGAAGATGACCTTTTACTTCAA
 TTTGATGTAGAAGATCTTTATGAACCGGTGTCAGTACCCTTCTCATACCCCAATGGACTCAGTGAAAATA
 CATCTGTTGTTGAAAAATTGAAACATATGGAAGCCAGGGCACTGTCTGCTGAAGCCGCATTGGCCAGAGC
 ACGTGAGGATCTGCAAAAAATGAAACAATTTGCTCAGGATTTTGTGATGCACACAGATGTCAGAACCTGC
 TCGTCATCTACTAGTGCATTGCGGACCTCCAGGAGGATGAGGATGGTGTATTTTACAGCTCATACGGGC
 ATTTATGGGATACATGAAGAAATGCTAAAGGACAAAATACGAACAGAAAGCTACCGAGATTTTCATATACCA
 AAATCCACATATCTTCAAAGACAAGGTAGTTTTGGATGTTGGGTGTGGAAGTCTCTCTATGTTT
 GCTGCTAAAGCTGGGGCGAAGAAGGTTCTTGGAGTTGATCAATCTGAAACTTTTACCAGGCAATGGATA
 TTATAAGACTAAATAAACTTGAAGATACTATTACACTAATTAAAGGAAAGATTGAAGAAGTTCATCTTCC
 TGTAGAAAAAGTAGATGTTATCATATCTGAGTGGATGGGCTATTTTCTTCTGTTTGTGATCTATGTTAGAT
 TCTGTCCTTTATGCAAAGAACAAATACTTGGCAAAAGGAGGCTCGGTCTACCCCTGACATTTGCACATCA
 GCCTTGTAGCAGTGAGTGATGTGAATAAACATGCTGATAGAATTGCTTTTTGGGATGATGCTATGGCTT
 CAAGATGTCCTGCATGAAGAAAGCAGTTATCCAGAAGCTGTTGTGGAAGTTTATAGTCCGAAGACTCTT
 ATTTCAGAACCTTGTGGTATTAAGCATATAGATTGCCATACGACGCTATCTCAGATTTGGAATTTTCAT
 CAGATTTTACCCTGAAAATCACAAGGACATCCATGTGCACGGCAATTGCTGGCTACTTTGATATATTT
 TGAGAAGAATTGCCACAACAGGTCGTGTTCTCTACGGGCCCTCAGAGCACAAAACACACTGGAACAA
 ACAGTATTTCTACTGAAAAACCATTTTTCAGTTAAAGCAGGTGAAGCCTTGAAGGAAAGTCCAGTTC
 ACAAGAATAAGAAAGATCCACGTTCTCTCACCGTGACCCTCACGTTGAATAAATCAACTCAAACCTTATGG
 TCTCCAG

ACGCGTACGCGGCCGCTCGAGCAGAAACTCATCTCAGAAGAGGATCTGGCAGCAATGATATCCTGGATT
 ACAAGGATGACGACGATAAGGTTTAA

Protein Sequence:

>RC226968 representing NM_001145166
 Red=Cloning site Green=Tags(s)

MC SLASGATGYS HLLKKHFHTVSLISLILTAWFINMNP TVEYMN SIYNPVPWEKEEY LKPVLEDDLL LQ
 FDVEDLYEPVSV PFSYPNGLSENTSVVEK LKHMEARALSAE AALARAREDLQKMKQFAQDFVMHTDVRTC
 SSSTSVIADLQ EDEDGVYFSSYGHYGIHEEMLKDKIRTESYRDFIYQNP HIFKDKVVL DVGCGTGILSMF
 AAKAGAKKVLGVDQSEILYQAMD IIRLNKLEDITLIKGI EEVHLPVEKVDV IISEWMGYFL LFESMLD
 SVLYAKNKYLAKGGSVYPDICTI SLVAVSDVNKHADRIAFWDDVYGFKMSCMKKAVIPEAVVEVLDPKTL
 ISEPCGIKHIDCHTTSISDLEFSSDFTLKITR TSMCTAIAGYFDIYFEKNCHNRVVFSTGPQSTKTHWKQ
 TVFLLEKPF SVKAGEALKGKVTVHKNKDP RSLTVTLTLN NSTQTYGLQ

TRTRPLEQKLI SEEDLAANDILDYKDDDDKV

Chromatograms:

https://cdn.origene.com/chromatograms/mk8062_a10.zip

Restriction Sites:

Sgfl-Mlul

Cloning Scheme:


ACCN: NM_001145166

ORF Size: 1407 bp

OTI Disclaimer: The molecular sequence of this clone aligns with the gene accession number as a point of reference only. However, individual transcript sequences of the same gene can differ through naturally occurring variations (e.g. polymorphisms), each with its own valid existence. This clone is substantially in agreement with the reference, but a complete review of all prevailing variants is recommended prior to use. [More info](#)

OTI Annotation: This clone was engineered to express the complete ORF with an expression tag. Expression varies depending on the nature of the gene.

Components: The ORF clone is ion-exchange column purified and shipped in a 2D barcoded Matrix tube containing 10ug of transfection-ready, dried plasmid DNA (reconstitute with 100 ul of water).

Reconstitution Method:

1. Centrifuge at 5,000xg for 5min.
2. Carefully open the tube and add 100ul of sterile water to dissolve the DNA.
3. Close the tube and incubate for 10 minutes at room temperature.
4. Briefly vortex the tube and then do a quick spin (less than 5000xg) to concentrate the liquid at the bottom.
5. Store the suspended plasmid at -20°C. The DNA is stable for at least one year from date of shipping when stored at -20°C.

RefSeq: [NM_001145166.1](#), [NP_001138638.1](#)

RefSeq ORF: 1410 bp

Locus ID: 10196

Cytogenetics: 11p15.1

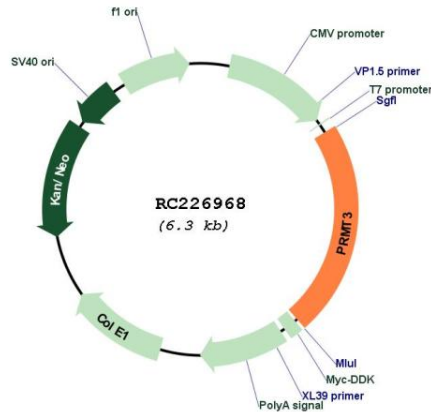
Protein Families: Druggable Genome

MW: 52.7 kDa

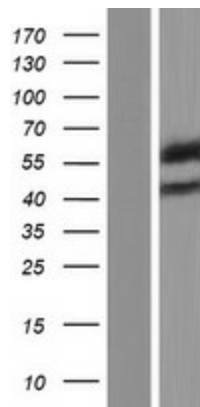
Gene Summary:

This gene belongs to the protein arginine methyltransferase (PRMT) family. The encoded enzyme catalyzes the methylation of guanidino nitrogens of arginyl residues of proteins. The enzyme acts on 40S ribosomal protein S2 (rpS2), which is its major in-vivo substrate, and is involved in the proper maturation of the 80S ribosome. Alternative splicing results in multiple transcript variants. [provided by RefSeq, Aug 2013]

Product images:



Circular map for RC226968



Western blot validation of overexpression lysate (Cat# [LY428738]) using anti-DDK antibody (Cat# [TA50011-100]). Left: Cell lysates from untransfected HEK293T cells; Right: Cell lysates from HEK293T cells transfected with RC226968 using transfection reagent MegaTran 2.0 (Cat# [TT210002]).