

Product datasheet for **RC226964**

ETV3 (NM_001145312) Human Tagged ORF Clone

Product data:

Product Type:	Expression Plasmids
Product Name:	ETV3 (NM_001145312) Human Tagged ORF Clone
Tag:	Myc-DDK
Symbol:	ETV3
Synonyms:	METS; PE-1; PE1
Mammalian Cell Selection:	Neomycin
Vector:	pCMV6-Entry (PS100001)
E. coli Selection:	Kanamycin (25 ug/mL)



[View online »](#)

ORF Nucleotide Sequence:

>RC226964 representing NM_001145312
 Red=Cloning site Blue=ORF Green=Tags(s)

TTTTGTAATACGACTCACTATAGGGCGGCCGGAATTCGTCGACTGGATCCGGTACCGAGGAGATCTGCC
 GCC**CGCATCGCC**

ATGAAAGCCGGCTGTAGCATCGTGGAAAAGCCAGAAGGAGGTGGAGGGTATCAGTTTCCTGACTGGCCCT
 AAAAAACAGATCATCCCAGGCTCCCGCAGATCCAGCTGTGGCACTTCATCCTGGAGCTGCTGCAGAA
 GGAAGAGTTCCGCCATGTCATCGCTGGCAGCAGGGAGAGTACGGGAATTTGTCATCAAGGATCCAGAT
 GAGGTGGCCCGCCTCTGGGGCCGAGGAAATGCAAACCACAGATGAATTATGACAAGCTGAGCCGGGCC
 TCAGATACTATTACAACAAGAGGATCCTTCATAAAACAAAAGGAAAAGATTTACCTATAAATTTAACTT
 CAACAAGCTGGTGTGCCCACTACCCATTTCATCAACATTCGGTCAAGTGGTGTGGTTTCTCAGAGTGCA
 CCACCAGTGCCAACAGCCTCTCCCGGTTCCATTTCCACCTCTGGACACCCATTCTCCAACCAATGATG
 TGCAGCCGGGACGGTTCTCTGCTAGCTCCCTAACTGCTTCTGGCCAGGAGTCCAGTAATGGTACTGATAG
 AAAGACTGAGCTTTCAGAGCTGGAGGATGGCTCAGCTGCTGACTGGCCCGGGGTGTGGATCCCGTGTCC
 TCAGGAATGCCATTGGTGGAGGAGGGATTGGCCATCAGAAACGCAAGCCTGACATAATGCTTCCTCTGT
 TTGCTAGGCCAGGGATGTACCCTGACCCCCACAGTCCCTTCGCTGTCTCTCCAATCCCTGGCCGGGAGG
 TGTCTTAATGTCCCATTTACCCAGCCCTCTCCCTGACTCCCACCATCTTCTCCTATAGCCCATACCA
 GGCTGAGCCCTTTCACCAGCAGCAGCTGCTTCTCCTTCAACCCTGAGGAAATGAAACACTACCTTCATT
 CTCAAGCTTGTCTGTGTTCAACTACCATCTGAGTCTCGGACTTTTCCCGTTACCCAGGGCTCATGGT
 TCCACCAGTGCAGTGCCAAATGCATCCTGAGGAGTCAACTCAGTTCTCCATCAAGCTGCAGCCCCACCA
 GTTGGCGGAAGAACCGGAGAGGGTTGAGAGCAGCGAGGAGTCAAGCAGTCCAGCACCAGTACCACGCCACCATGG
 CTCTATTCCCCCAAGAATCAAGGTGGAACCTGCCTCTGAAAAGGATCCTGAGAGCCTCAGGCATCGGC
 ACGAGAGAAGGAGGAGCACACTCAAGAAGAGGGCACTGTGCCAAGCAGGACCATTGAAGAGGAAAAAGGC
 ACCATCTTTGCCGCTCTGCTGACCACCCATCTGGCCCTCTGTGCCATTAGCACCCCAAGTGGAGAAC
 CTCTGGAGGTGACTGAAGACAGTGGAGTATGGCCTGGCAAAGAGCCAGTGCACCTGAGAAGAAAGAAGA
 TGCAGTATGCCCCCAAGCTTCGGTTGAAGCGGCGCTGGAATGATGACCCTGAAGCCCGAGAGCTGAGC
 AAGAGTGGCAAGTTTCTCTGGAATGGGTGAGGCCAGGGCTTGGCAACAGCAGCTGCTGATGCT

ACGCGTACGCGGCCGCTCGAGCAGAAACTCATCTCAGAAGAGGATCTGGCAGCAAATGATATCTGGATT
 ACAAGGATGACGACGATAAGGTTTAA

Protein Sequence:

>RC226964 representing NM_001145312
 Red=Cloning site Green=Tags(s)

MKAGCSIVEKPEGGGYQFPDWAYKTESSPGSRQIQLWHF ILELLQKEEFRHVIAWQQGEYGEFVIKDPD
 EVARLWGRRKCKPQMNYDKLSRALRYYNKRILHKTKGRFTYKFNFNKLVMPNYPFINIRSSGVVPQSA
 PPVPTASSRFHFPPLDTHSPTNDVQPGRF SASSLTASGQESSNGTDRKTELSELEDGSAADWRRGVDVPS
 SRNAIGGGIGHQKRKPDIMLPLFARPGMYPDPHSPFAVSPIPGRGGVLNVPI SPALSLTPTIFSYSPSP
 GLSPFTSSSCFSFNPEEMKHYLHSQACSVFNHLSRPTFPRYPGLMVPPLQCMHPEESTQFSIKLQPPP
 VGRKNRERVESSEESAPVTTPTMASIPPRIKVEPASEKDPESLRQSAREKEEHTQEEGTVPSRTIEEEKG
 TIFARPAAPPIWPSVPISTPSGEPLVTEDESDRPGKEPSAPEKKEDALMPPKLRKRWNDDPEARELS
 KSGKFLWNGSGPQGLATAAADA

TRTRPLEQKLI SEEDLAANDILDYKDDDDKV

Chromatograms:

https://cdn.origene.com/chromatograms/mk8064_d11.zip

Restriction Sites:

Sgfl-Mlul

Cloning Scheme:


ACCN: NM_001145312

ORF Size: 1536 bp

OTI Disclaimer: The molecular sequence of this clone aligns with the gene accession number as a point of reference only. However, individual transcript sequences of the same gene can differ through naturally occurring variations (e.g. polymorphisms), each with its own valid existence. This clone is substantially in agreement with the reference, but a complete review of all prevailing variants is recommended prior to use. [More info](#)

OTI Annotation: This clone was engineered to express the complete ORF with an expression tag. Expression varies depending on the nature of the gene.

Components: The ORF clone is ion-exchange column purified and shipped in a 2D barcoded Matrix tube containing 10ug of transfection-ready, dried plasmid DNA (reconstitute with 100 ul of water).

Reconstitution Method:

1. Centrifuge at 5,000xg for 5min.
2. Carefully open the tube and add 100ul of sterile water to dissolve the DNA.
3. Close the tube and incubate for 10 minutes at room temperature.
4. Briefly vortex the tube and then do a quick spin (less than 5000xg) to concentrate the liquid at the bottom.
5. Store the suspended plasmid at -20°C. The DNA is stable for at least one year from date of shipping when stored at -20°C.

RefSeq: [NM_001145312.3](#)

RefSeq ORF: 1539 bp

Locus ID: 2117

UniProt ID: [P41162](#)

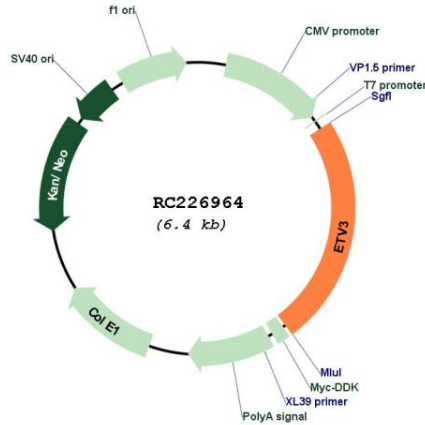
Cytogenetics: 1q23.1

Protein Families: Transcription Factors

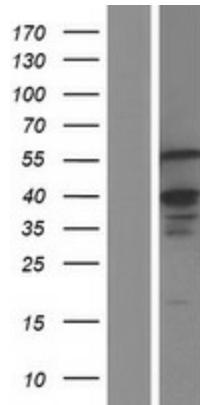
MW: 56.8 kDa

Gene Summary: Transcriptional repressor that contribute to growth arrest during terminal macrophage differentiation by repressing target genes involved in Ras-dependent proliferation. Represses MMP1 promoter activity.[UniProtKB/Swiss-Prot Function]

Product images:



Circular map for RC226964



Western blot validation of overexpression lysate (Cat# [LY428815]) using anti-DDK antibody (Cat# [TA50011-100]). Left: Cell lysates from untransfected HEK293T cells; Right: Cell lysates from HEK293T cells transfected with RC226964 using transfection reagent MegaTran 2.0 (Cat# [TT210002]).