

## Product datasheet for RC226960

### GPR113 (ADGRF3) (NM\_001145168) Human Tagged ORF Clone

#### Product data:

Product Type:	Expression Plasmids
Product Name:	GPR113 (ADGRF3) (NM_001145168) Human Tagged ORF Clone
Tag:	Myc-DDK
Symbol:	GPR113
Synonyms:	GPR113; PGR23
Mammalian Cell Selection:	Neomycin
Vector:	pCMV6-Entry (PS100001)
E. coli Selection:	Kanamycin (25 ug/mL)
ORF Nucleotide Sequence:	>RC226960 representing NM_001145168 Red=Cloning site Blue=ORF Green=Tags(s)

TTTTGTAATACGACTCACTATAGGGCGGCCGGAATTCGTCGACTGGATCCGGTACCGAGGAGATCTGCC  
GCC**CGATCGCC**

ATGGTCTGTTGGCTGCCCACTGCTGCTCCTGGCCACAACCTCTCCCTGCTGGGGTACCAGTTGCC  
AAGCATCCCAACCTGTAAGTGAGACTGGGGTGGAGCCAGGGAAGGTCTGCAGAGGCGACAATGGGGACC  
CCTGATTGGGAGAGACAAAGCATGGAATGAAAGGATAGACAGACCCTTCCTGCCTGCCCATCCCCCTA  
TCTTCTAGCTTTGGCCGATGGCCCAAGGGCCAGACAATGTGGGCCAGACCTCCACCCTCACCTGACAG  
AGGAGGAGTTGGGACAGAGTCAGGCTGGAGGGGAATCTGGATCTGGGCAGCTCCTGGACCAAGAGAATGG  
AGCAGGGGAATCAGCGCTGGTCTCCGTCTATGTACATCTGGACTTCCAGATAAGACCTGGCCCCCTGAA  
CTCTCCAGGACACTGACTCTCCCTGCTGCCTCAGCTTCTCTTCCCAAGGCCTCTTCTACTGGCCTCA  
GACTCACAAACAGAGTGAATGTCAACCACAAGGGGAATTTCTATTGTGCTTGCCCTCTGGCTACCAGTG  
GAACACCAGCATCTGCCTCCATTACCCTCCTGTCAAAGCCTCCACAACCACCAGCCTGTGGCTGCCTT  
GTCTTCAGCCATCCCGAACCCTGGTACTGCCAGTTGCTGCCACCTGGGTCCCCTGTACCTGCCTCCCTG  
CAGTCCCCGGGATCCTCAACCTGAACTCCAGCTGCAGATGCCTGGTGACACGCTGAGCCTGACTCTCCA  
TCTGAGCCAGGAGGCCACCAACCTGAGCTGGTTCTGAGGCACCCAGGGAGCCCCAGTCCCATCCTCCTG  
CAGCCAGGGACACAGGTGTCTGTGACTTCCAGCCACGGCCAGGCTGCCCTCAGCGTCTCCAACATGTCCC  
ATCACTGGGCAGGTGAGTACATGAGCTGCTTCGAGGCCACGGGCTTCAAGTGGAACCTGTATGAGGTGGT  
GAGGGTGCCTTGAAGGCGACAGATGTGGCTCGACTTCCATACCAGCTGTCCATCTCCTGTGCCACCTCC  
CCTGGCTTCCAGCTGAGCTGCTGCATCCCCAGCACAAACCTGGCCTACACCGCGGCTGGAGCCTGGAG  
AGGGCAGCAAAGCTTCTCCTTCAACGAGTCAGGCTCTCAGTGCTTTGTGCTGGCTGTTACAGCGTGCC  
GATGGCTGACACCACGTACGCTTGTGACCTGCAGAGCCTGGGCCTGGCTCCACTCAGGGTCCCCATCTCC  
ATCACCATCATCCAGGATGGAGACATCACCTGCCCTGAGGACGCCTCGGTGCTCACCTGGAATGTCACCA  
AGGCTGGCCACGTGGCACAGGCCCATGTCTGAGAGCAAAGGGGCATAGTGAGGAGGCTCTGTGGGGC  
TGACGGAGTCTGGGGCCGGTCCACAGCAGCTGCACAGATGCGAGGCTCCTGGCCTGTCTACTAGAACC



[View online >](#)

AAGCTGCTGCAGGCAGGCCAGGGCAGTCTGCTGAGGAGGTGCCACAGATCCTGGCACAGCTGCCAGGGC  
 AGGCGGCAGAGGCAAGTTCACCTCCGACTTACTGACCCTGCTGAGCACCATGAAATACGTGGCCAAAGT  
 GGTGGCAGAGGCCAGAATACAGCTTGACCCGAGAGCCCTGAAGAAATCTCCTGATTGCCACAGACAAGGTC  
 CTAGATATGGACACCAGGTCTCTGTGGACCCTGGCCCAAGCCCGAAGCCCTGGGCAGGCTCGACTCTCC  
 TGCTGGCTGTGGAGACCCTGGCATGCAGCCTGTGCCACAGGACCACCCCTTCGCCTTACGTTACCCAA  
 TGTGCTGCTGCAGAGCCAGCTGTTTGGACCACGTTTCTGCTGACTACAGCATCTCCTTCCCTACTCGG  
 CCCCCACTGCAGGCTCAGATTCCAGGCACTACTGGCCCCATTGGTCCGTAATGGAATGAAATAAGTA  
 TTAGTAGCCTGGTGTGCGAAAACCTGGACCACCTTCTGCCCTCAAATATGGACAAGGGCTGGGGGATTC  
 CCTCTATGCCACTCCTGGCCTGGTCTTGTCAATTCATCATGGCAGGTGACCGGCCTTACGCCAGGGA  
 GAGGTCATCATGGACTTTGGAAACAGATGGTCCCCTCACTGTGTCTTCTGGGATCACAGTCTCTTCC  
 AGGGCAGGGGGGTTGGTCAAAGAAGGGTGCCAGGCACAGGTGGCCAGTGCCAGCCCCACTGCTCAGTG  
 CCTCTGCCAGCACCTCACTGCCTTCTCCGTCTCATGTCCCACACACTGTTCCGGAAGAACCCGCTCTG  
 GCGCTGCTGACTCAAGTGGGCTTGGGAGCTTCCATACTGGCGTGTGTGTGCTGGGTGTACTGGC  
 TGGTGTGGAGAGTCGTGGTGCAGAACAGATCTCTATTTCCGCCAGCCGCCCTGCTCAACATGGTGT  
 CTGCTTGTGGCCGAGACACTTGTCTTCTGGGCGCCCACTTCTCTCCAGGGCCCCGAAGCCGCTC  
 TGCCCTGTGCCGCTTCTCTGTCAATTCCTCTACCTGGCCACCTTTTTCTGGATGCTGGCGCAGGCC  
 TGGTGTGGCCACCAGCTGCTCTTGTCTTCCAGCTGGCAAAGCACCGAGTCTCCCCCTCATGGT  
 GCTCCTGGGCTACCTGTGCCACTGGGGTTGGCAGGTGTACCCTGGGGCTTACCTACCTCAAGGGCAA  
 TACCTGAGGGAGGGGAATGCTGGTTGGATGGGAAGGGAGGGGCGTTATACACCTTCGTGGGGCCAGTGC  
 TGGCCATCATAGGCGTGAATGGGCTGGTACTAGCCATGGCCATGCTGAAGTTGCTGAGACCTTCGCTGTC  
 AGAGGGACCCCCAGCAGAGAAGCGCCAAGCTCTGCTGGGGTGATCAAAGCCCTGCTCATTCTTACACCC  
 ATCTTTGGCCTCACCTGGGGCTGGGCTGGCCACTCTGTTAGAGGAAGTCTCCACGGTCCCTCATTACA  
 TCTTACCATTCTAACACCCCTCAGGGGCTTCTCATCTATTGTTGGTTGCCTCATGGACAGGAAGAT  
 ACAAGAAGCTTTGCGCAAACGCTTCTGCCGCGCCCAAGCCCAAGCTCCACCATCTCCCTGGTGAAGTGC  
 TGCCCTCAGATCCTCAGCTGTGCATCCAAGAGCATGTGAGAAGGCATTCCATGGCCCTCCTCAGAGGACA  
 TGGGCACAGCCAGAAGC

**ACGCGT**ACGCGGCCGCTCGAGCAGAAACTCATCTCAGAAGAGGATCTGGCAGCAAATGATATCCTGGATT  
 ACAAGGATGACGACGATAAGGTTTAA

**Protein Sequence:**

>RC226960 representing NM\_001145168  
 Red=Cloning site Green=Tags(s)

MVCSAAPLLLLLATTPLLLGSPVAQASQPVSETGVRPREGLQRRQWGPLIGRDKAWNERIDRPFPAPIPL  
 SSSFRWPKGQTMWAQTSTLTLTEEELGQSQAGGESGSQLLDQENGAGESALVSYYVHLDFFDKTWPE  
 LSRTLTLPAASASSSPRLLTGLRLTTECNVNHKGNFYCACLSGYQWNTSICLHYPPCQSLHNNHPCGCL  
 VFSHPEPGYQQLPPGSPVTCLPAVPGILNLSQLQMPGDTLSLTLHLSQEATNLSWFLRHPGSPSPILL  
 QPGTQVSVTSSHQAALSVSNMHHWAGEYMSCFEAQGFKNWLYEVVRVPLKATDVARLPYQLSISCATS  
 PGFQLSCCIPSTNLAYTAAWSPGEGSKASSFNESGSCFVLAVQRCPMADTTYACDLQSLGLAPLRVPIS  
 ITIIQDGDITCPEDASVLTWNVTKAGHVAQAPCPESKRGIVRRLCGADGWVGPVHSSCTDARLLALFTRT  
 KLLQAGQGSPAEEVPQILAQLPGQAAEASSPSDLLTLLSTMKYVAKVVAEARIQLDRRALKNLLIATDKV  
 LDMDTRSLWTLAQARKPWAGSTLLAVETLACSLCPQDHPFAFSLPNVLLQSFLGPTFPADYSISFPTR  
 PPLQAQIPRHS LAPLVRNGTEISITSLVLRKLDHLLPSNYGQGLGDSLYATPGLVLVISIMAGDRAFSQG  
 EVIMDFGNTDGSPhcVFDHSLFQGRGWSKEGCQAQVASASPTAQCLCQHLLTAFSVLMSPHTPPEEPAL  
 ALLTQVGLGASILALLVCLGVYWLWVRVVRNKISYFRHAALLNMVFCLLAADTCFLGAPFLSPGPRSP  
 CLAAAFLLCHFLYLATFFWMLAQALVLAHQLLVVFHQLAKHRVPLMVLLGYLCPLGLAGVTLGLYLPQGQ  
 YLREGECWLDGKGGALYTFVGPVLAIIIGVNLVLAAMMLKLLRPSLSEGPPAEKRQALLGVIKALLILTP  
 IFGLTWGLGLATLLEEVSTVPHYIFTILNLTQGVFILLFGCLMDRKIQEALRKRFCRAQAPSSTISLVSC  
 CLQILSCASKSMSEGIPWPSSSEDMGTARS

TRTRPLEQKLI SEEDLAANDILDYKDDDDKV

**Chromatograms:**

[https://cdn.origene.com/chromatograms/mk8012\\_g07.zip](https://cdn.origene.com/chromatograms/mk8012_g07.zip)



**Reconstitution Method:**

1. Centrifuge at 5,000xg for 5min.
2. Carefully open the tube and add 100ul of sterile water to dissolve the DNA.
3. Close the tube and incubate for 10 minutes at room temperature.
4. Briefly vortex the tube and then do a quick spin (less than 5000xg) to concentrate the liquid at the bottom.
5. Store the suspended plasmid at -20°C. The DNA is stable for at least one year from date of shipping when stored at -20°C.

**RefSeq:** [NM\\_001145168.1](#), [NP\\_001138640.1](#)

**RefSeq ORF:** 3240 bp

**Locus ID:** 165082

**UniProt ID:** [Q8IZF5](#)

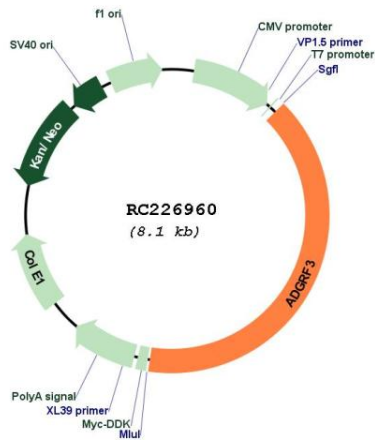
**Cytogenetics:** 2p23.3

**Protein Families:** Druggable Genome, Transmembrane

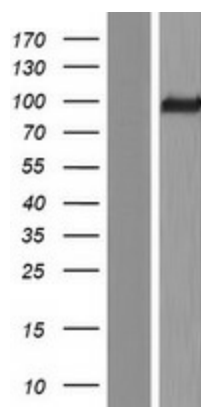
**MW:** 116.2 kDa

**Gene Summary:** Orphan receptor.[UniProtKB/Swiss-Prot Function]

**Product images:**



Circular map for RC226960



Western blot validation of overexpression lysate (Cat# [LY428740]) using anti-DDK antibody (Cat# [TA50011-100]). Left: Cell lysates from untransfected HEK293T cells; Right: Cell lysates from HEK293T cells transfected with RC226960 using transfection reagent MegaTran 2.0 (Cat# [TT210002]).