

Product datasheet for **RC226949**

Perilipin-1 (PLIN1) (NM_001145311) Human Tagged ORF Clone

Product data:

Product Type:	Expression Plasmids
Product Name:	Perilipin-1 (PLIN1) (NM_001145311) Human Tagged ORF Clone
Tag:	Myc-DDK
Symbol:	Perilipin-1
Synonyms:	FPLD4; PERI; PLIN
Mammalian Cell Selection:	Neomycin
Vector:	pCMV6-Entry (PS100001)
E. coli Selection:	Kanamycin (25 ug/mL)



[View online »](#)

ORF Nucleotide Sequence:

>RC226949 representing NM_001145311
 Red=Cloning site Blue=ORF Green=Tags(s)

TTTTGTAATACGACTCACTATAGGGCGGCCGGAATTCGTCGACTGGATCCGGTACCGAGGAGATCTGCC
 GCC**CGGATCGCC**

ATGGCAGTCAACAAAGGCTCACCTTGCTGGATGGAGACCTCCCTGAGCAGGAGAATGTGCTGCAGCGGG
 TCCTGCAGCTGCCGGTGGTGAAGTGGCACCTGCGAATGCTTCCAGAAGACCTACACCAGCACTAAGGAAGC
 CCACCCACTGGTGGCTCTGTGTGCAATGCCTATGAGAAGGGCGTGCAGAGCGCCAGTAGCTTGGCTGCC
 TGGAGCATGGAGCCGGTGGTCCGCAAGGTGCCACCCAGTTCACAGCTGCCAATGAGCTGGCCTGCCGAG
 GCTTGGACCACCTGGAGGAAAAGATCCCGCCCTCCAGTACCCCTGAAAAGATTGCTTCTGAGCTGAA
 GGACACCATCTCCACCCGCTCCGCAAGTCCAGAAACAGCATCAGCGTCCCATCGCGAGCACTTCAGAC
 AAGTCTGGGGCGCTTTGGCCGGTGCAGCTTGCCTGGGGGTGCCAGAGACTGCGGAATTTG
 CTGCCAACCTCGAGCTGGCCGACTGGCTTCTGGAGGGCCGACTTGGCCTTGGGCAGCATTGAGAAGT
 GGTGGAGTACCTCCTCCCTGCAGACAAGGAAGAGTCAGCCCTGCTCCTGGACACCAGCAAGCCAGGAG
 TCTCCAAAGGCCAAGCCAAGCCTTTGAGCAGGGTTGGGGCTCTGACCAACCCCTCTCTCGATACCCG
 TGACAGCCATGGCCCGGCCCTGGAGCAGGGCCACACAGTGGCCATGTGGATCCCAGGCGTGGTGGCCCT
 GAGCAGCTGGCCAGTGGGGTGCCTCAGTGGCCATGCAGGCGGTGCCCGCGGAGGAGCGAAGTGCAG
 GTACCCTGGTGCACAGCCTCGCAGCCGCCAGGAGGAGGATCATGAGGACCAGACAGACACGGAGGGAG
 AGGACACGGAGGAGGAGGAAGAATTGGAGACTGAGGAGAACAAGTTCAGTGAGGTAGCAGCCCTGCCAGG
 CCCTCGAGGCTCCTGGTGGTGTGGCAGATACCTGCAGAAGACCCTCCAGACCACCATCTCGGCTGTG
 ACATGGCACCTGCAGCTGTGCTGGCATGGCAGGGAGGTGCTGCACCTCACACCAGCCCCGCTGTCT
 CCTCAACCAAGGGGAGGCCATGTCCCTATCAGATGCCCTGAAGGGCGTTACTGACAACCTGGTGGACAC
 AGTGGTGCATTACGTGCCGCTCCCGAGGCTGTCGCTGATGGAGCCCGAGAGCGAATTCGGGACATCGAC
 AACCCACAGCCGAGGTGCAGCGCCGGAGGCGGAGCGCAGAGCGTCTGGGGCGCCGTCGCCCGGCCGG
 AGCCCGCCCGCTCTCGCACAGCCCGCCGCGAGCCTGCGCAGCGCGCAGAGCCCGCGCGCCCCCGG
 CCCGGGCTGGAGGACGAAGTCGCCAGCCCGCAGCGCCCGCGCCGGCTTCCCGCCGTGCCCGCGAG
 AAGCCAAAGCGCAGGGTCAAGCAGCTTCTCCGGCCAGCGTCATGGAGCCCATCTGGGCCGACGCG
 ATTACAGCCAGCTGCGCAAGAAGAGC

ACGCGTACGCGGCCGCTCGAGCAGAACTCATCTCAGAAGAGGATCTGGCAGCAAATGATATCCTGGATT
 ACAAGGATGACGACGATAAGGTTTAA

Protein Sequence:

>RC226949 representing NM_001145311
 Red=Cloning site Green=Tags(s)

MAV NKGL TLL DGL PEQENVL QRVLQL PVVSGTCECFQKTYTSTKEAHLVASVCNAYEKGVQSASSLAA
 WSEPVVRRRLSTQFTAANELACRGLDHLEEKIPALQYPPEKIASLKDITSTRLSARNISVPIASTSD
 KVLGAALAGCELAWGVARDTAEFAANTRAGRLASGGADLALGSIEKVVEYLLPADKEESAPAPGHQQAQE
 SPKAKPSLLSRVGALTNL SRYTVQTMARALEQGHTVAMWIPGVVPLSSLAQWGASVAMQAVSRRRSEVR
 VPWLHSLAAAQEEHDHEDQTDTEGEDTEEEETEENKFSEVAALPGPRGLLGGVAHTLQKTLQTTISAV
 TWAPAAVLGMAGRVLHLTPAPAVSSTKGRAMSLSDALKGVTDNVVDTVVHYVPLPRLSLMEPESEFRDID
 NPPAEVERREAERRASGAPSEPEPAPRLAQPRRSLRSAQSPGAPPGLEDEVATPAAPRPGFPAVPRE
 KPKRRVSDSFFRPSVMEPILGRTHYSQLRKKS

TRTRPLEQKLISEEDLAANDILDYKDDDDKV

Chromatograms:

https://cdn.origene.com/chromatograms/mg3818_d05.zip

Restriction Sites:

SgfI-MluI

Cloning Scheme:

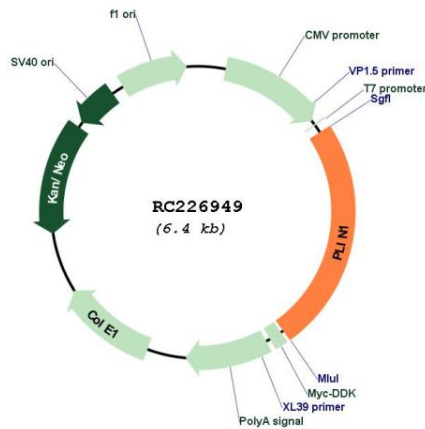

- ACCN:** NM_001145311
- ORF Size:** 1566 bp
- OTI Disclaimer:** The molecular sequence of this clone aligns with the gene accession number as a point of reference only. However, individual transcript sequences of the same gene can differ through naturally occurring variations (e.g. polymorphisms), each with its own valid existence. This clone is substantially in agreement with the reference, but a complete review of all prevailing variants is recommended prior to use. [More info](#)
- OTI Annotation:** This clone was engineered to express the complete ORF with an expression tag. Expression varies depending on the nature of the gene.
- Components:** The ORF clone is ion-exchange column purified and shipped in a 2D barcoded Matrix tube containing 10ug of transfection-ready, dried plasmid DNA (reconstitute with 100 ul of water).
- Reconstitution Method:**
1. Centrifuge at 5,000xg for 5min.
 2. Carefully open the tube and add 100ul of sterile water to dissolve the DNA.
 3. Close the tube and incubate for 10 minutes at room temperature.
 4. Briefly vortex the tube and then do a quick spin (less than 5000xg) to concentrate the liquid at the bottom.
 5. Store the suspended plasmid at -20°C. The DNA is stable for at least one year from date of shipping when stored at -20°C.
- RefSeq:** [NM_001145311.1](#), [NP_001138783.1](#)
- RefSeq ORF:** 1569 bp
- Locus ID:** 5346
- UniProt ID:** [O60240](#)
- Cytogenetics:** 15q26.1
- Protein Families:** Druggable Genome

Protein Pathways: PPAR signaling pathway

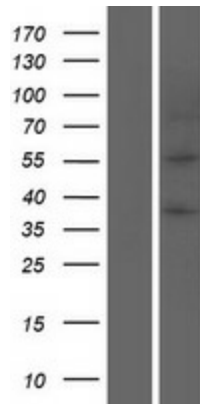
MW: 55.8 kDa

Gene Summary: The protein encoded by this gene coats lipid storage droplets in adipocytes, thereby protecting them until they can be broken down by hormone-sensitive lipase. The encoded protein is the major cAMP-dependent protein kinase substrate in adipocytes and, when unphosphorylated, may play a role in the inhibition of lipolysis. Alternatively spliced transcript variants varying in the 5' UTR, but encoding the same protein, have been found for this gene. [provided by RefSeq, Feb 2009]

Product images:



Circular map for RC226949



Western blot validation of overexpression lysate (Cat# [LY428814]) using anti-DDK antibody (Cat# [TA50011-100]). Left: Cell lysates from untransfected HEK293T cells; Right: Cell lysates from HEK293T cells transfected with RC226949 using transfection reagent MegaTran 2.0 (Cat# [TT210002]).