

Product datasheet for RC226933

SEC13L1 (SEC13) (NM_001136232) Human Tagged ORF Clone

Product data:

Product Type:	Expression Plasmids
Product Name:	SEC13L1 (SEC13) (NM_001136232) Human Tagged ORF Clone
Tag:	Myc-DDK
Symbol:	SEC13L1
Synonyms:	D3S1231E; npp-20; SEC13L1; SEC13R
Mammalian Cell Selection:	Neomycin
Vector:	pCMV6-Entry (PS100001)
E. coli Selection:	Kanamycin (25 ug/mL)
ORF Nucleotide Sequence:	>RC226933 representing NM_001136232 Red=Cloning site Blue=ORF Green=Tags(s)

TTTTGTAATACGACTCACTATAGGGCGGCCGGAATTCGTCGACTGGATCCGGTACCGAGGAGATCTGCC
GCC**CGATCGCC**

ATGATTACGACGCCAGATGGACTACTATGGCACCCGCCTGGCAACCTGCTCATCAGACAGGTCCGTCA
AAATCTTTGATGTGCGCAATGGAGGGCAGATCCTATCGCCGACCTCAGGGGTATGAGGGTCTGTGTG
GCAAGTGGCTGGGCTACCCCATGTACGGCAACATCCTGGCATCGTCTCTATGACCGGAAAGTCATT
ATCTGGAGAGAGAAAACGGCACCTGGGAGAAGAGCCACGAGCATGCGGGACACGACTCCTCAGTGAAT
CGGTGTGCTGGGCCCCCATGACTACGGCCTGATCCTGGCCTGTGGGAGCTCGGATGGGGCCATCTCCCT
GCTGACTTACACCGGGAAGGCCAATGGGAAGTAAAGAAGATCAACAACGCTCACACCATTGGCTGCAAT
GCCGTCAGCTGGGCCCTGCTGTTGTACCTGGAAGCCTCATAGACCACCCATCGGGGCAGAAACCAATT
ACATCAAGAGGTTTGCATCAGGTGGCTGTGACAACCTCATCAAGCTGTGGAAGGAGGAGGAGGACGGCCA
GTGGAAGGAGGAGCAGAAGCTAGAAGCGCACAGTACTGGGTTTCGAGATGTGGCTGGGCCCCCTCCATC
GGCCTGCCACCAGCACCATCGCCAGCTGCTCCAGGATGGTCTGTGTTTCAATTTGGACCTGTGATGATG
CCTCAAGCAATACGTGGTCCCCTAAATTGTTGCACAAGTTCAACGATGTGGTGTGGCATGTGAGCTGGTC
CATCACAGCCAACATCCTGGCTGTCTCTGGTGGAGACAATAAGGTGACCCCTGTGGAAGGAGTCAGTTGAT
GGCAGTGGGTGTGCATCAGTGTGATGTCAACAAGGGCCAGGGCTCCGTATCAGCATCAGTGACAGAGGGCC
AGCAGAACGAGCAG

ACGCGTACGCGGCCGCTCGAGCAGAAACTCATCTCAGAAGAGGATCTGGCAGCAATGATATCCTGGATT
ACAAGGATGACGACGATAAGGTTTAA



[View online »](#)

Protein Sequence: >RC226933 representing NM_001136232
Red=Cloning site Green=Tags(s)

MIHDAQMDYYGTRLATCSSDRSVKIFDVRNGGQIL IADLRGHEGPVWQVAWAHPMYGNILASCSYDRKVI
 IWRENGTWEKSHEHAGHDSSVNSVCWAPHDYGLILACGSSDGAISLLTYTGEGQWEVKINNAHTIGCN
 AVSWAPAVVPGSLIDHPSGQKPNYIKRFASGGCDNLIKLWKEEEDGQWKEEQKLEAHSWVVRDVAWAPSI
 GLPTSTIASCSQDGRVF IWTCCDASSNTWSPKLLHKFNDVVHVSWSITANILAVSGGDNKVT LWKESVD
 GQWVCISDVNKGQGSVASVTEGQQNEQ

TRTRPLEQKLISEEDLAANDILDYKDDDDKV

Chromatograms: https://cdn.origene.com/chromatograms/ja1506_f04.zip

Restriction Sites: SgfI-MluI

Cloning Scheme:



ACCN: NM_001136232

ORF Size: 924 bp

OTI Disclaimer: The molecular sequence of this clone aligns with the gene accession number as a point of reference only. However, individual transcript sequences of the same gene can differ through naturally occurring variations (e.g. polymorphisms), each with its own valid existence. This clone is substantially in agreement with the reference, but a complete review of all prevailing variants is recommended prior to use. [More info](#)

OTI Annotation: This clone was engineered to express the complete ORF with an expression tag. Expression varies depending on the nature of the gene.

Components: The ORF clone is ion-exchange column purified and shipped in a 2D barcoded Matrix tube containing 10ug of transfection-ready, dried plasmid DNA (reconstitute with 100 ul of water).

Reconstitution Method:

1. Centrifuge at 5,000xg for 5min.
2. Carefully open the tube and add 100ul of sterile water to dissolve the DNA.
3. Close the tube and incubate for 10 minutes at room temperature.
4. Briefly vortex the tube and then do a quick spin (less than 5000xg) to concentrate the liquid at the bottom.
5. Store the suspended plasmid at -20°C. The DNA is stable for at least one year from date of shipping when stored at -20°C.

RefSeq: [NM_001136232.2](#), [NP_001129704.1](#)

RefSeq ORF: 927 bp

Locus ID: 6396

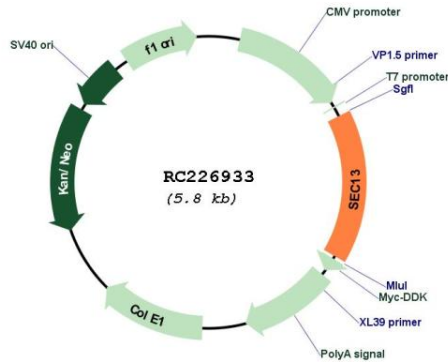
UniProt ID: [P55735](#)

Cytogenetics: 3p25.3

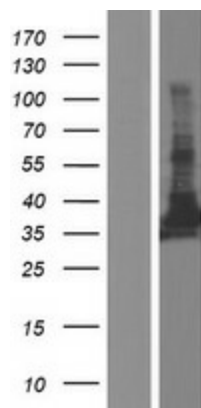
MW: 33.8 kDa

Gene Summary: The protein encoded by this gene belongs to the SEC13 family of WD-repeat proteins. It is a constituent of the endoplasmic reticulum and the nuclear pore complex. It has similarity to the yeast SEC13 protein, which is required for vesicle biogenesis from endoplasmic reticulum during the transport of proteins. Multiple alternatively spliced transcript variants have been found. [provided by RefSeq, Oct 2008]

Product images:



Circular map for RC226933



Western blot validation of overexpression lysate (Cat# [LY427864]) using anti-DDK antibody (Cat# [TA50011-100]). Left: Cell lysates from untransfected HEK293T cells; Right: Cell lysates from HEK293T cells transfected with RC226933 using transfection reagent MegaTran 2.0 (Cat# [TT210002]).