

## Product datasheet for RC226929

### ELAVL4 (NM\_001144775) Human Tagged ORF Clone

#### Product data:

Product Type:	Expression Plasmids
Product Name:	ELAVL4 (NM_001144775) Human Tagged ORF Clone
Tag:	Myc-DDK
Symbol:	ELAVL4
Synonyms:	HUD; PNEM
Mammalian Cell Selection:	Neomycin
Vector:	pCMV6-Entry (PS100001)
E. coli Selection:	Kanamycin (25 ug/mL)
ORF Nucleotide Sequence:	>RC226929 representing NM_001144775 Red=Cloning site Blue=ORF Green=Tags(s)

TTTTGTAATACGACTCACTATAGGGCGGCCGGAATTCGTCGACTGGATCCGGTACCGAGGAGATCTGCC  
GCC**CGATCGCC**

ATGAGATTACTTCTTTAAGGAAATTGTCATTAATGAGTCAAGAACTGCTCATTTATGATAATTAGCA  
CCATGGAGCCTCAGGTGTCAAATGGTCCGACATCCAATACAAGCAATGGACCCTCCAGCAACAACAGAAA  
CTGTCTTCTCCCATGCAAACAGGGCAACCACAGATGACAGCAAACCAACCTCATCGTCAACTATTTA  
CCCCAGAATATGACCCAAGAAGAATTCCAGGAGTCTCTTCGGGAGCATTGGTGAAATAGAATCCTGCAAA  
TTGTGAGAGACAAAATTACAGGACAGAGTTTAGGGTATGGATTTGTTAACTATATTGATCCAAGGATGC  
AGAGAAAGCCATCAACACTTTAAATGGACTCAGACTCCAGACAAAACCATAAAGGTCTCATATGCCCGT  
CCGAGCTCTGCCCAATCAGGGATGCTAACCTCTATGTTAGCGGCCTTCCAAAACCATGACCCAGAAGG  
AACTGGAGCAACTTTTCTCGCAATACGGCCGTATCATCACCTCACGAATCCTGGTTGATCAAGTCACAGG  
AGTGTCCAGAGGGGTGGGATTCAATCCGCTTTGATAAGAGGATTGAGGCAGAAGAAGCCATCAAAGGGCTG  
AATGGCCAGAAGCCAGCGGTGTACGGAACCGATTACTGTGAAGTTTGCCAACAACCCAGCCAGAAGT  
CCAGCCAGGCCCTGCTCTCCAGCTCTACCAGTCCCCAACCGGCCTACCCAGGTCCACTTCACCACCA  
GGCTCAGAGGTTCAAGCTGGACAATTTGCTTAATATGGCCTATGGCGTAAAGAGGTTCTCCCAATTACC  
ATTGATGGAATGACAAGCCTTGTGGAAATGAACATCCCTGGTACACAGGAAGTGGTGGTGCATCTTTG  
TCTACAACCTGTCCCCGATTCCGATGAGAGTGTCTCTGGCAGCTCTTTGGCCCTTTGGAGCAGTGAA  
CAACGTAAGGTGATTCGTGACTTCAACACCAACAAGTGAAGGGATTCCGGCTTTGTCACCATGACCAAC  
TATGATGAGGCGGCCATGGCCATCGCCAGCCTCAACGGGTACCGCCTGGGAGACAGAGTGTGCAAGTTT  
CCTTTAAACCAACAAGCCACAAGTCC

**ACGCGT**ACGCGGCCGCTCGAGCAGAACTCATCTCAGAAGAGGATCTGGCAGCAATGATATCCTGGATT  
ACAAGGATGACGACGATAAGGTTTAA



[View online »](#)

**Protein Sequence:** >RC226929 representing NM\_001144775  
Red=Cloning site Green=Tags(s)

MRLLLLREIVINESRNCSEFMIIISTMEPQVSNQPTSNSTNGPSSNNRNCPSMQTGATDDSKTNLIVNYL  
 PQNMTQEEFRSLFGSIGEIESCKLVDRKITGQSLGYGFVNYIDPKDAEKAINLNLRLQTKTIKVSYAR  
 PSSASIRDANLYVSGLPKMTQKELEQLFSQYGRITSRILVDQVTGVSRGVGFIRFDKRIEAEAAIKGL  
 NGQKPSGATEPITVKFANNPSQKSSQALLSQLYQSPNRRYPGLHHQAQRFRLDNLNLMAYGVKRFSPIT  
 IDGMTSLVGMNIPGHTGTGWCIFVYNYLSPDSESVLWQLFGPFGAVNNVKVIRDFNTNKCKGFGFVTMTN  
 YDEAAMAIASLNGYRLGDRVLQVSFKTNKAHKS

TRTRPLEQKLISEEDLAANDILDYKDDDDKVV

**Chromatograms:** [https://cdn.origene.com/chromatograms/mk8056\\_b10.zip](https://cdn.origene.com/chromatograms/mk8056_b10.zip)

**Restriction Sites:** SgfI-MluI

**Cloning Scheme:**



**ACCN:** NM\_001144775

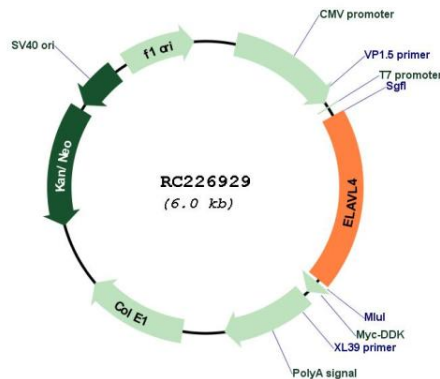
**ORF Size:** 1149 bp

**OTI Disclaimer:** Due to the inherent nature of this plasmid, standard methods to replicate additional amounts of DNA in E. coli are highly likely to result in mutations and/or rearrangements. Therefore, OriGene does not guarantee the capability to replicate this plasmid DNA. Additional amounts of DNA can be purchased from OriGene with batch-specific, full-sequence verification at a reduced cost. Please contact our customer care team at [custsupport@origene.com](mailto:custsupport@origene.com) or by calling 301.340.3188 option 3 for pricing and delivery.

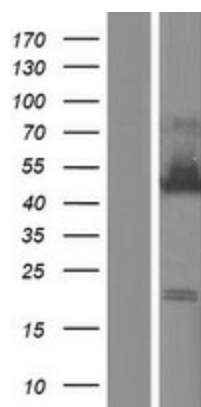
The molecular sequence of this clone aligns with the gene accession number as a point of reference only. However, individual transcript sequences of the same gene can differ through naturally occurring variations (e.g. polymorphisms), each with its own valid existence. This clone is substantially in agreement with the reference, but a complete review of all prevailing variants is recommended prior to use. [More info](#)

<b>OTI Annotation:</b>	This clone was engineered to express the complete ORF with an expression tag. Expression varies depending on the nature of the gene.
<b>Components:</b>	The ORF clone is ion-exchange column purified and shipped in a 2D barcoded Matrix tube containing 10ug of transfection-ready, dried plasmid DNA (reconstitute with 100 ul of water).
<b>Reconstitution Method:</b>	<ol style="list-style-type: none"> <li>1. Centrifuge at 5,000xg for 5min.</li> <li>2. Carefully open the tube and add 100ul of sterile water to dissolve the DNA.</li> <li>3. Close the tube and incubate for 10 minutes at room temperature.</li> <li>4. Briefly vortex the tube and then do a quick spin (less than 5000xg) to concentrate the liquid at the bottom.</li> <li>5. Store the suspended plasmid at -20°C. The DNA is stable for at least one year from date of shipping when stored at -20°C.</li> </ol>
<b>RefSeq:</b>	<u>NM_001144775.1, NP_001138247.1</u>
<b>RefSeq ORF:</b>	1209 bp
<b>Locus ID:</b>	1996
<b>UniProt ID:</b>	<u>P26378</u>
<b>Cytogenetics:</b>	1p33-p32.3
<b>Protein Families:</b>	Druggable Genome
<b>MW:</b>	42.3 kDa
<b>Gene Summary:</b>	May play a role in neuron-specific RNA processing. Protects CDKN1A mRNA from decay by binding to its 3' UTR (By similarity). Binds to AU-rich sequences (AREs) of target mRNAs, including VEGF and FOS mRNA.[UniProtKB/Swiss-Prot Function]

### Product images:



Circular map for RC226929



Western blot validation of overexpression lysate (Cat# [LY428515]) using anti-DDK antibody (Cat# [TA50011-100]). Left: Cell lysates from untransfected HEK293T cells; Right: Cell lysates from HEK293T cells transfected with RC226929 using transfection reagent MegaTran 2.0 (Cat# [TT210002]).