

Product datasheet for **RC226923**

FES (NM_001143785) Human Tagged ORF Clone

Product data:

Product Type:	Expression Plasmids
Product Name:	FES (NM_001143785) Human Tagged ORF Clone
Tag:	Myc-DDK
Symbol:	FES
Synonyms:	FPS
Mammalian Cell Selection:	Neomycin
Vector:	pCMV6-Entry (PS100001)
E. coli Selection:	Kanamycin (25 ug/mL)



[View online »](#)

ORF Nucleotide Sequence:

>RC226923 representing NM_001143785
 Red=Cloning site Blue=ORF Green=Tags(s)

TTTTGTAATACGACTCACTATAGGGCGGCCGGAATTCGTCGACTGGATCCGGTACCGAGGAGATCTGCC
 GCC**CGGATCGCC**

ATGGGCTTCTCTCCGAGCTGTGCAGCCCCAGGGCCACGGGGTCTGCAGCAAATGCAGGAGGCCGAGC
 TTCGTCTACTGGAGGGCATGAGAAAGTGGATGGCCACGGGTCAAGAGTGACAGGGAGTATGCAGGACT
 GCTTACCACATGTCCCTGCAGGACAGTGGGGCCAGAGCCGGGCATCAGCCCTGACAGCCCCATCAGT
 CAGACCCACAGCCAGGACATTGAGAAGCTGAAGAGCCAGTACCGAGCTCTGGCACGGGACAGTGCCCAAG
 CCAAGCGCAAGTACCAGGAGGCCAGAAAGACAAGGACCGTGACAAGGCTAAGGACAAGTATGTGCGCAG
 CCTGTGGAAGCTCTTTGCTCACCACAACCGCTATGTGCTGGGCGTGGGGCTGCGCAGCTACACCACCAG
 CACCACCACAGCTCCTGCTGCCCGCCTGCTGCGGTACTGCAGGACCTGCACGAGGAGATGGCTTGCA
 TCCTGAAGGAGATCCTGCAGGAATACCTGGAGATTAGCAGCCTGGTGCAGGATGAGGTGGTGGCCATTCA
 CCGGGAGATGGCTGCAGTGTGCCCGCATCCAGCCTGAGGCTGAGTACCAAGGCTTCTGCGACAGTAT
 GGGTCCGCACCTGACGTCCCACCCTGTGTACGTTTCGATGAGTACTGCTTGAGGAGGGTGAACCGCTGG
 AGCCTGGGGAGCTCCAGCTGAACGAGCTGACTGTGGAGAGCGTGCAGCACACGCTGACCTCAGTGACAGA
 TGAGCTGGCTGTGGCCACCGAGATGGTGTTCAGGCGCAGGAGATGGTTACGCAGCTGCAACAGGAGCTC
 CGGAATGAAGAGGAGAACACCCACCCCGGGAGCGGGTGCAGCTGCTGGGCAAGAGGCAAGTGTGCAAG
 AAGCACTGCAGGGGCTGCAGGTAGCGTGTGCAGCCAGGCCAAGTGCAGGCCACGAGGAGTTGCTGCA
 GACCAAGCTGGAGACCTGGGCCCGGGCAGCCCCCGCTGTGCTGCTCCTGCAGGATGACCGCCACTCC
 ACGTCGTCTCGGAGCAGGAGCGAGAGGGGGGAAGGACACCCACGCTGGAGATCCTTAAGAGCCACATCT
 CAGGAATCTTCCGCCCAAGTTCTCGAACCTGTACCGACTGGAAGGGGAAGGCTTCTCAGCATTCTTT
 GCTCATCGACCACCTACTGAGCACCCAGCAGCCCTCACCAAGAAGAGTGGTGTGCTGACACAGGGCT
 GTGCCAAGGACAAGTGGGTGCTGAACCATGAGGACCTGGTGTGGGTGAGCAGATTGGACGGGGAACT
 TTGGCGAAGTGTTCAGCGGACGCCTGCGAGCCGACAACACCCCTGGTGGCGGTGAAGTCTTGTGAGAGAC
 GCTCCACCTGACCTCAAGGCCAAGTTTCTACAGGAAGCGAGGATCCTGAAGCAGTACAGCCACCCCAAC
 ATCGTGGTCTCATTGGTGTCTGCACCCAGAAGCAGCCCATCTACATCGTCATGGAGCTTGTGCAGGGGG
 GCGACTTCTGACCTTCTCCGCACGGAGGGGGCCCGCTGCGGGTGAAGACTCTGCTGCAGATGGTGGG
 GGATGCAGCTGCTGGCATGGAGTACCTGGAGAGCAAGTGTGCATCCACCGGACCTGGCTGCTCGGAAC
 TGCTTGGTGCAGAGAAGTGTCTGAAGATCAGTGACTTTGGGATGTCCCGAGAGGAAGCCGATGGGG
 TCTATGCAGCCTCAGGGGCCTCAGACAAGTCCCCTGAAAGTGGACCGCACCTGAGGCCCTTAACACGG
 CCGTACTCTCCGAAAGCGACGTGTGGAGCTTTGGCATCTTGCTCTGGGAGACCTTCAGCCTGGGGGCC
 TCCCCCTATCCAACTCAGCAATCAGCAGACACGGGAGTTTGTGGAGAAGGGGGCCGCTGCCCCTGCC
 CAGAGCTGTGCTGATGCCGTGTTAGGCTCATGGAGCAGTGTGGCCTATGAGCCTGGGCAGCGGCC
 CAGTTACAGCCATCTACCAGGAGCTGCAGAGCATCCGAAAGCGGCATCGG

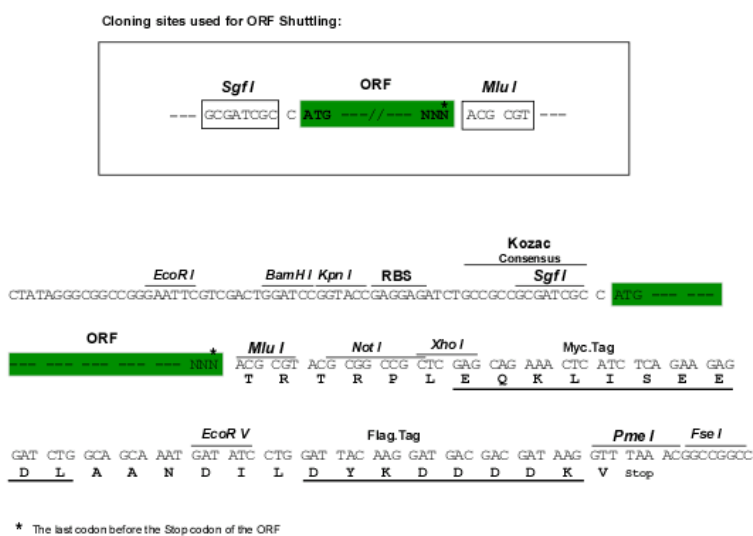
ACGCGTACGCGGGCCGCTCGAGCAGAACTCATCTCAGAAGAGGATCTGGCAGCAAATGATATCCTGGATT
 ACAAGGATGACGACGATAAGGTTTAA

Protein Sequence: >RC226923 representing NM_001143785

Red=Cloning site Green=Tags(s)

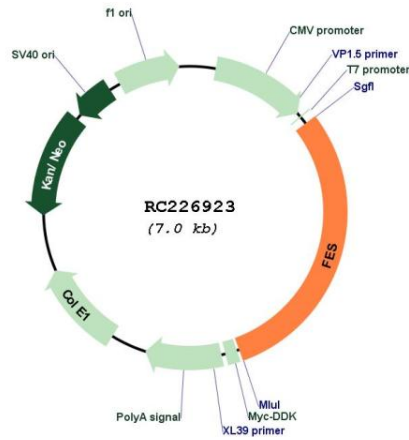
MGFSSEL CSPQGHGVLQQMQEAE LRLLEGMRKWMAQRVKSDREYAGLLHHMSLQDSGGQSRAISPDPSPIS
 QTHSQDIEKLSQYRALARDSAQAKRKYQEASKDKDRDKAKDKYVRS LKLF AHHNRVYLVG VRAAQLHHQ
 HHHQLLLPGLLRSLQDLHEEMACILKEILQEYLEISSLVQDEVVAIHREMAAAARIQPEAEYQGLRQY
 GSAPDVPPCVTFDESLL EEEGEPL EP GELQLNELTVESVQH TLTSV TDELAVATEMVFR RQEMVTQLQQEL
 RNEEENTHPRE RVQLLGK RQVLQEALQGLQVALCSQAKLQAQQELLQTKLEHLGPPEPPVLLLQDDRHS
 TSSSEQERE GGRTP TLEILKSHISGIFRPKFSNL YRLEGEGFPSIPLLIDHLLSTQQPLTKKSGVVLHRA
 VPKDKWVLNHEDLVLGEQIGRGNFGEVFSGR LRADNTLVAVKSCRETPPDLKAKFLQEARILKQYSHPN
 I VRLIGVCTQKQPIYIVMELVQGGDFL TFLRTEGARLRVK TLLQMVGDAAAGMEYLESKCCIHRLAARN
 CLVTEKNVLIKISDFGMSREEADGVYAASGGLRQVPV KWT APEALNYGRYSSSESDVW SFGILLWETFSLGA
 SPYPNLSNQQTRE FVEKGGRLPCPELCPDAV FRLMEQCWAYEPGQRPSFS TIYQELQSIRKRHR

TRTRPLEQKLISEEDLAANDILDYKDDDDKV

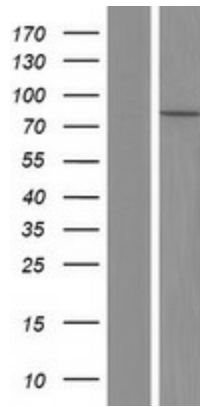
Chromatograms: https://cdn.origene.com/chromatograms/mk8073_c07.zip**Restriction Sites:** SgfI-MluI**Cloning Scheme:****ACCN:** NM_001143785**ORF Size:** 2082 bp**OTI Disclaimer:** The molecular sequence of this clone aligns with the gene accession number as a point of reference only. However, individual transcript sequences of the same gene can differ through naturally occurring variations (e.g. polymorphisms), each with its own valid existence. This clone is substantially in agreement with the reference, but a complete review of all prevailing variants is recommended prior to use. [More info](#)**OTI Annotation:** This clone was engineered to express the complete ORF with an expression tag. Expression varies depending on the nature of the gene.

Components:	The ORF clone is ion-exchange column purified and shipped in a 2D barcoded Matrix tube containing 10ug of transfection-ready, dried plasmid DNA (reconstitute with 100 ul of water).
Reconstitution Method:	<ol style="list-style-type: none">1. Centrifuge at 5,000xg for 5min.2. Carefully open the tube and add 100ul of sterile water to dissolve the DNA.3. Close the tube and incubate for 10 minutes at room temperature.4. Briefly vortex the tube and then do a quick spin (less than 5000xg) to concentrate the liquid at the bottom.5. Store the suspended plasmid at -20°C. The DNA is stable for at least one year from date of shipping when stored at -20°C.
RefSeq:	<u>NM_001143785.2</u>
RefSeq ORF:	2085 bp
Locus ID:	2242
UniProt ID:	<u>P07332</u>
Cytogenetics:	15q26.1
Protein Families:	Druggable Genome, Protein Kinase
Protein Pathways:	Axon guidance
MW:	78.5 kDa
Gene Summary:	This gene encodes the human cellular counterpart of a feline sarcoma retrovirus protein with transforming capabilities. The gene product has tyrosine-specific protein kinase activity and that activity is required for maintenance of cellular transformation. Its chromosomal location has linked it to a specific translocation event identified in patients with acute promyelocytic leukemia but it is also involved in normal hematopoiesis as well as growth factor and cytokine receptor signaling. Alternative splicing results in multiple variants encoding different isoforms.[provided by RefSeq, Jan 2009]

Product images:



Circular map for RC226923



Western blot validation of overexpression lysate (Cat# [LY428346]) using anti-DDK antibody (Cat# [TA50011-100]). Left: Cell lysates from untransfected HEK293T cells; Right: Cell lysates from HEK293T cells transfected with RC226923 using transfection reagent MegaTran 2.0 (Cat# [TT210002]).