

Product datasheet for **RC226917**

TSEN2 (NM_001145392) Human Tagged ORF Clone

Product data:

Product Type:	Expression Plasmids
Product Name:	TSEN2 (NM_001145392) Human Tagged ORF Clone
Tag:	Myc-DDK
Symbol:	TSEN2
Synonyms:	PCH2B; SEN2; SEN2L
Mammalian Cell Selection:	Neomycin
Vector:	pCMV6-Entry (PS100001)
E. coli Selection:	Kanamycin (25 ug/mL)



[View online »](#)

ORF Nucleotide Sequence:

>RC226917 ORF sequence
 Red=Cloning site Blue=ORF Green=Tags(s)

TTTTGTAATACGACTCACTATAGGGCGGCCGGGAATTCGTCGACTGGATCCGGTACCGAGGAGATCTGCC
 GCC**CGCATCGCC**

ATGGCAGAAGCAGTTTTCCATGCCCCAAAGAGGAAAAGAAGAGTGTATGAGACTTACGAGTCTCCATTGC
 CAATCCCTTTTGGTCAGGACCATGGTCCTGAAAGAATTC AAGATATTCGTCGCTGAAATGATTAAACA
 CAATGTGATTGTGAGGAATGCGGAGGACATTGAGCAGCTCTATGGGAAAGGTTATTTTGGAAAAGGTATT
 CTTTCAAGAAGCCGTCCAAGCTTACAATTCAGATCCTAAACTGGTTGCTAAATGGAAAGATATGAAGA
 CAAACATGCCTATCATCACATCAAAGAGGTATCAGCATAGTGTGAGTGGGCAGCAGAGCTGATGCGTAG
 ACAGGGGCAGGATGAGAGTACAGTGCAGCAATCCTCAAGGATTACACGAAACCGCTTGAGCATCCTCCT
 GTGAAAAGGAATGAAGAGGCTCAAGTGCATGACAAGCTTAACTCTGGAATGGTTTCCAACATGGAAGGCA
 CAGCAGGGGGAGAGAGACCTTCTGTGGTAAACGGGGACTCTGAAAGTCAGGTGGTGTGGGTGATCCCCG
 TGAGCCATTAGGCTGCCTGCAGGAGGGCTGGCTGCCACCCAACAACAGAGAGCTTTGAGAAAAGCGTG
 CGAGAGGATGCCTCACCTCTGCCCATGTCTGTTGCTGCAACAAGATGCTCTCATCCTCCAGCGTGGCC
 TTCATCATGAAGACGGCAGCCAGCACATCGGCCTCCTGCATCCTGGGGACAGAGGGCCTGACCATGAGTA
 CGTGCTGGTCGAGGAAGCGGAGTGTGCCATGAGCGAGAGGGAGGCTGCCCAAATGAGGAATTTGGTGAA
 AGAAACAGGTTAATATGCAGAAGAAATCCATATAGGATCTTTGAGTATTTGCAACTCAGCCTAGAAGAGG
 CCTTTTCTTGGTCTATGCTCTGGGATGTTAAGTATTTACTATGAGAAGGAGCCTTTAACGATAGTGAA
 GCTCTGAAAAGCTTTCACTGTAGTTCAGCCACGTTGAGAACCACCTACATGGCCTACCATTACTTTGGA
 AGCAAGGGCTGGTGGCCAAAGTGGGACTCAAGTACGGGACAGATTTACTGCTATATCGAAAGGCCCTC
 CATTTTACCATGCAAGTTATTCTGTCTATTATCGAGCTAGTTGATGACCATTTTGAAGGCTCTCCGCGAG
 GCCTCTCAGTTGGAAGTCCCTGGCTGCCTTGAGCAGAGTTTCCGTTAATGTCTCTAAGGAACTTATGCTG
 TGCTATTTGATTAACCCCTCTACTATGACTGACAAGGAAATGGAGTCACCAGAATGTATGAAAAGGATTA
 AAGTTCAGGAGGTGATTCTGAGTCGATGGGTTTCTTACGAGAGAGGAGTGACCAAGACGATCTT

ACGCGTACGCGGCCGCTCGAGCAGAACTCATCTCAGAAGAGGATCTGGCAGCAAATGATATCCTGGATT
 ACAAGGATGACGACGATAAGGTTTAA

Protein Sequence:

>RC226917 protein sequence
 Red=Cloning site Green=Tags(s)

MAEAVFHAPKRKRVRVYETYESPLPIPFQDGHGPKLKEFKIFRAEMINNNVIVRNAEDIEQLYKGYFGKGI
 LSRSRPSFTISDPKLVAKWKDMKTNMPIITSKRYQHSVEWAAELMRRQGQDESTVRRILKDYTKPLEHPP
 VKRNEEAQVHDKLNSGMVSNMEGTAGGERPSVNVNGDSGKSGGVGDPREPLGCLQEGSGCHPTTESFEKSV
 REDASPLPHVCCCKQDALILQRGLHHEDGSQHIGLLHPGDRGPDHEYVLVEEAECAMSEREAAPNEELVQ
 RNRLICRRNPYRIFEYLQLSLEEAFFLVYALGCLSIYYEKEPLTIVKLWKAFTVVQPTFRTTYMAYHYFR
 SKGWVPKVGLKYGTDLLLYRKGPFFYHASYSVIELVDDHFEGSLRRPLSWKSLAALSRVSVNVSKELML
 CYLIKPSTMTDKEMESPECMKRIKVQEVILSRVSSRERSDQDDL

TRTRPLEQKLISEEDLAANDILDYKDDDDKV

Chromatograms:

https://cdn.origene.com/chromatograms/mk6709_a06.zip

Restriction Sites:

Sgfl-Mlul

Cloning Scheme:


ACCN: NM_001145392

ORF Size: 1395 bp

OTI Disclaimer: The molecular sequence of this clone aligns with the gene accession number as a point of reference only. However, individual transcript sequences of the same gene can differ through naturally occurring variations (e.g. polymorphisms), each with its own valid existence. This clone is substantially in agreement with the reference, but a complete review of all prevailing variants is recommended prior to use. [More info](#)

OTI Annotation: This clone was engineered to express the complete ORF with an expression tag. Expression varies depending on the nature of the gene.

Components: The ORF clone is ion-exchange column purified and shipped in a 2D barcoded Matrix tube containing 10ug of transfection-ready, dried plasmid DNA (reconstitute with 100 ul of water).

Reconstitution Method:

1. Centrifuge at 5,000xg for 5min.
2. Carefully open the tube and add 100ul of sterile water to dissolve the DNA.
3. Close the tube and incubate for 10 minutes at room temperature.
4. Briefly vortex the tube and then do a quick spin (less than 5000xg) to concentrate the liquid at the bottom.
5. Store the suspended plasmid at -20°C. The DNA is stable for at least one year from date of shipping when stored at -20°C.

RefSeq: [NM_001145392.1](#), [NP_001138864.1](#)

RefSeq Size: 2150 bp

RefSeq ORF: 1398 bp

Locus ID: 80746

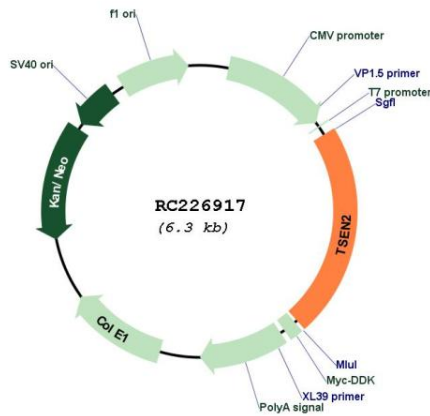
UniProt ID: [Q8NCE0](#)

Cytogenetics: 3p25.2

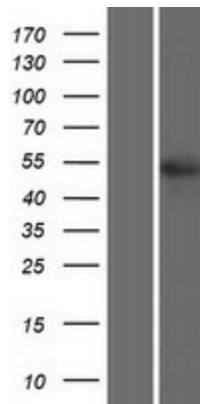
MW: 53.2 kDa

Gene Summary: This gene encodes one of the subunits of the tRNA splicing endonuclease. This endonuclease catalyzes the first step in RNA splicing which is the removal of introns. Mutations in this gene have been associated with pontocerebellar hypoplasia type 2. A pseudogene has been identified on chromosome 4. Multiple transcript variants encoding different isoforms have been found for this gene.[provided by RefSeq, Feb 2009]

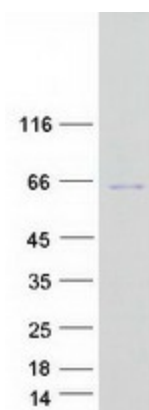
Product images:



Circular map for RC226917



Western blot validation of overexpression lysate (Cat# [LY428856]) using anti-DDK antibody (Cat# [TA50011-100]). Left: Cell lysates from untransfected HEK293T cells; Right: Cell lysates from HEK293T cells transfected with RC226917 using transfection reagent MegaTran 2.0 (Cat# [TT210002]).



Coomassie blue staining of purified TSEN2 protein (Cat# [TP326917]). The protein was produced from HEK293T cells transfected with TSEN2 cDNA clone (Cat# RC226917) using MegaTran 2.0 (Cat# [TT210002]).