

## Product datasheet for **RC226913**

### **SGK1 (NM\_001143678) Human Tagged ORF Clone**

#### **Product data:**

Product Type:	Expression Plasmids
Product Name:	SGK1 (NM_001143678) Human Tagged ORF Clone
Tag:	Myc-DDK
Symbol:	SGK1
Synonyms:	SGK
Mammalian Cell Selection:	Neomycin
Vector:	pCMV6-Entry (PS100001)
E. coli Selection:	Kanamycin (25 ug/mL)



[View online »](#)

ORF Nucleotide  
Sequence:

>RC226913 representing NM\_001143678  
Red=Cloning site Blue=ORF Green=Tags(s)

TTTTGTAATACGACTCACTATAGGGCGGCCGGAATTCGTCGACTGGATCCGGTACCGAGGAGATCTGCC  
GCCGCGATCGCC

ATGGGGGAGATGCAGGGCGCGCTGGCCAGAGCCGGCTCGAGTCCCTGCTGCGGCCCCGCCACAAAAGA  
GGGCCGAGGCGCAGAAAAGGAGCGAGTCCCTCCTGCTGAGCGGACTGGCTTTCATGAAGCAGAGGAGGAT  
GGGTCTGAACGACTTTATTTCAGAAGATTGCCAATAACTCCTATGCATGCAAAACACCTGAAGTTCAGTCC  
ATCTTGAAGATCTCCCAACCTCAGGAGCCTGAGCTTATGAATGCCAACCTTCTCCTCCACCAAGTCCCT  
CTCAGCAAATCAACCTTGGCCCGTCTCCAATCCTCATGCTAAACCATCTGACTTTCACTTCTTGAAAGT  
GATCGGAAAGGGCAGTTTTGGAAAGGTTCTTAGCAAGACACAAGGCAGAAGAAGTGTCTATGCAGTC  
AAAGTTTTACAGAAGAAAGCAATCCTGAAAAGAAAGAGGAGAAGCATATTATGTCGGAGCGGAATGTTT  
TGTTGAAGAATGTGAAGCACCTTCTGGTGGCCTTCACTTCTTTCCAGACTGCTGACAAAATTGTA  
CTTTGCTCAGACTACATTAATGGTGGAGATTGTTCTACCATCTCCAGAGGGAACGCTGCTTCCGGAA  
CCACGGGCTCGTTTCTATGCTGCTGAAATAGCCAGTGCCTTGGGCTACCTGCATTCACTGAACATCGTTT  
ATAGAGACTTAAAACCAGAGAATATTTTGTAGATTACAGGGACACATTGTCCTTACTGACTTCGGACT  
CTGCAAGGAGAACATTGAACACAACAGCACAACATCCACCTTCTGTGGCAGCGCGGAGTATCTCGCACCT  
GAGGTGCTTCATAAGCAGCCTTATGACAGGACTGTGGACTGGTGGTGCCTGGGAGCTGTCTTGATGAGA  
TGCTGTATGGCCTGCCGCTTTTTATAGCCGAAACACAGCTGAAATGTACGACAACATTGAAACAAGCC  
TCTCCAGCTGAAACCAATATTACAAATCCGCAAGACACCTCCTGGAGGGCCTCCTGCAGAAGGACAGG  
ACAAAGCGGCTCGGGCCAAGGATGACTTCATGGAGATTAAGAGTCATGTCTTCTCCTTAATTAAC  
GGGATGATCTCATTAAATAAGAAGATTACTCCCCTTTTAACCCAAATGTGAGTGGGCCCAACGACCTACG  
GCACTTTGACCCCGAGTTTACCGAAGAGCCTGTCCCAACTCCATTGGCAAGTCCCTGACAGCGTCTC  
GTCACAGCCAGCGTCAAGGAAGTCCGAGGCTTCTAGGCTTTTCTATGCGCCTCCACGGACTCTT  
TCCTC

ACGCGTACGCGGCCGCTCGAGCAGAACTCATCTCAGAAGAGGATCTGGCAGCAAATGATATCCTGGATT  
ACAAGGATGACGACGATAAGGTTTAA

## Protein Sequence:

>RC226913 representing NM\_001143678  
Red=Cloning site Green=Tags(s)

MGEMQGALARARLESLLRPRHKKRAEAQKRSEFLLSGLAFMKQRRMGLNDFIQKIANNYSYACKHPEVQS  
ILKISQPQPELMNANPSPSPSQINLGPSSNPFAKPSDFHFLKVIKGSFGKVLARHKAEEVFYAV  
KVLQKKAILKKKEEKHIMSERNVLLKNVKHPFLVGLHFSFQTADKLYFVLDYINGGELFYHLQRERCFLE  
PRARFYAAEIASALGYLHSLNIVYRDLKPENILLDSQGHIVL TDFGLCKENIEHNSTTSTFCGTPEYLAP  
EVLHKQPYDRTVDWWCLGAVLYEMLYGLPPFYSRNTAEMYDNILNKPLQLKPNITNSARHLLLEGLLQKDR  
TKRLGAKDDFMEIKSHVFFSLINWDDLINKITPPFPNPVSGPNDRHFDPEFTEEPVPNSIGKSPDSVL  
VTASVKEAAEAF LGFSYAPPTDSFL

TRTRPLEQKLISEEDLAANDILDYKDDDDKV

## Chromatograms:

[https://cdn.origene.com/chromatograms/mk8060\\_e06.zip](https://cdn.origene.com/chromatograms/mk8060_e06.zip)

## Restriction Sites:

Sgfl-Mlul

**Cloning Scheme:**


**ACCN:** NM\_001143678

**ORF Size:** 1335 bp

**OTI Disclaimer:** The molecular sequence of this clone aligns with the gene accession number as a point of reference only. However, individual transcript sequences of the same gene can differ through naturally occurring variations (e.g. polymorphisms), each with its own valid existence. This clone is substantially in agreement with the reference, but a complete review of all prevailing variants is recommended prior to use. [More info](#)

**OTI Annotation:** This clone was engineered to express the complete ORF with an expression tag. Expression varies depending on the nature of the gene.

**Components:** The ORF clone is ion-exchange column purified and shipped in a 2D barcoded Matrix tube containing 10ug of transfection-ready, dried plasmid DNA (reconstitute with 100 ul of water).

**Reconstitution Method:**

1. Centrifuge at 5,000xg for 5min.
2. Carefully open the tube and add 100ul of sterile water to dissolve the DNA.
3. Close the tube and incubate for 10 minutes at room temperature.
4. Briefly vortex the tube and then do a quick spin (less than 5000xg) to concentrate the liquid at the bottom.
5. Store the suspended plasmid at -20°C. The DNA is stable for at least one year from date of shipping when stored at -20°C.

**RefSeq:** [NM\\_001143678.2](#)

**RefSeq ORF:** 1338 bp

**Locus ID:** 6446

**UniProt ID:** [O00141](#)

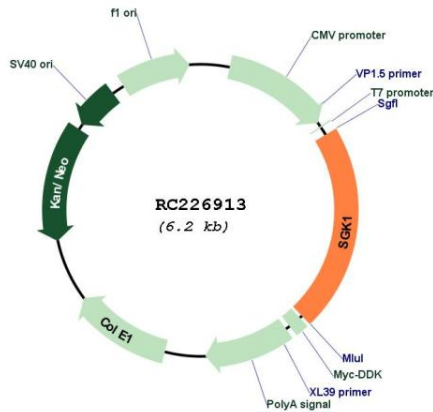
**Cytogenetics:** 6q23.2

**Protein Families:** Druggable Genome, Protein Kinase

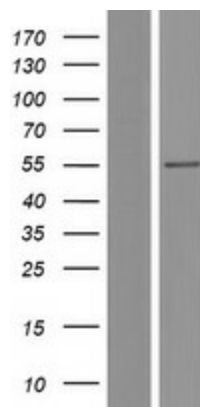
**MW:** 50.4 kDa

**Gene Summary:** This gene encodes a serine/threonine protein kinase that plays an important role in cellular stress response. This kinase activates certain potassium, sodium, and chloride channels, suggesting an involvement in the regulation of processes such as cell survival, neuronal excitability, and renal sodium excretion. High levels of expression of this gene may contribute to conditions such as hypertension and diabetic nephropathy. Several alternatively spliced transcript variants encoding different isoforms have been noted for this gene. [provided by RefSeq, Jan 2009]

**Product images:**



Circular map for RC226913



Western blot validation of overexpression lysate (Cat# [LY428314]) using anti-DDK antibody (Cat# [TA50011-100]). Left: Cell lysates from untransfected HEK293T cells; Right: Cell lysates from HEK293T cells transfected with RC226913 using transfection reagent MegaTran 2.0 (Cat# [TT210002]).