

## Product datasheet for **RC226898**

### SSC5D (NM\_001144950) Human Tagged ORF Clone

#### Product data:

**Product Type:** Expression Plasmids  
**Product Name:** SSC5D (NM\_001144950) Human Tagged ORF Clone  
**Tag:** Myc-DDK  
**Symbol:** SSC5D  
**Synonyms:** S5D-SRCRB  
**Vector:** pCMV6-Entry (PS100001)  
**E. coli Selection:** Kanamycin (25 ug/mL)  
**Cell Selection:** Neomycin  
**ORF Nucleotide Sequence:** >RC226898 representing NM\_001144950  
Red=Cloning site Blue=ORF Green=Tags(s)

TTTTGTAATACGACTCACTATAGGGCGCCGGAATTCGTCGACTGGATCCGGTACCGAGGAGATCTGCC  
GCCGGATCGCC

ATGAGGGTCTTGGCTGCCTCCTTGGCCCTGGTGGGATCCAGGCTGTTGAGCGCTGCGCTGGCCG  
ATGGCCCCATGGGTGCGCTGGCCGCTGGAGGCTGGCATGGCGGGCGCTGGGGACCGTGTGTATGA  
CGGCTGGGACCTGCGCGATGCCCGCTGGCTGCCGGCAGCTGGGCTGCGGAGGGGCACTGGCCGCCCCG  
GGAGGCGCCTTCTCGGGGAGGGGGCAGGGCCTGTGTGGCTCAGCGAGCTGGCTTGCCGGGCAACGAGG  
GGCAGCTGGGCCTCTGCCACCACCGGGGCTGGAAGGCCACATCTGCTCCCACGAGGAGGACGCGGGCGT  
CGTCTGCGCAGGTGAGCGTGTGGCTAACTCCAGGGACGACTCAACATCTCCCCTGGATGGGGCTCCCTGG  
CCAGGGCTGTTGCTGGAGCTGAGCCCCAGCACGGAGGAGCCCCTGGTGACACATGCCCCCCGCCAGCTG  
GGAACCCCAAGACGCTCCCGGAAGAAGAGCCCCGGCCCAAGCAGGCCAAGTCCACCCGGGCCCTCT  
GCTGACGACAGGAGCCCCCGCAAGAGCGGCTGCGCCTGGTCTCTGGCCCCACAGGTGCGCCGGACGC  
CTGGAGGTCTGGCACGGCGGGCGCTGGGGCACCGTATGTGACGATGGCTGGGACCTGCGCAGCCTGCTG  
TAGCCTGCCGGAACTGGGCTGTGGGGGGCGCTGGCTGCCCGCGGTGCCAGATTCGGGCTGGTGC  
AGGGCCCGTGTGGATGGACGATGTGGGTGTGGAGGAGGAGAACAGGCCCTCCGAGACTGCCCCGAAGC  
CCCTGGGGCCGGAGCAACTGTGACCACAGCGAGGATGCGGGGCTGGTCTGCACCGGCCACGACCTCGGC  
TGCGCCTGGCCGATGGCCCCACGGGTGCGCCGGCCGCTGGAGGTCTGGCACGGGGTCTGTTGGGGT  
GGTGTGTGACGACGCTGGGACCTGCGAGACGCCGCTGTGGCCTGCCGAGAGCTGGGCTGCGGAGGGGCG  
CTGGCCGCCCCGGGGCGCCTTCTTTGGGAGGGGTCTGGACCATCATCTGGACGACCTTCGGTGT  
GGGAAACGAGACGGCCTTACGATTCGCCAGCTCGGCCCTGGGCCAGCATGACTGTCACCACCGCGA  
GGACGCCGGGCGTGTGTGACGGCATGCCCTGGGCTACGTCCTCCACGGCCCCACGGACAGCAAC  
AACTCCACGCCAGGGAGGCTGCCTCCAGCCCCGTCACCATGACGAGCCAGGCTCCAGGGACGCGAG  
GGTTTTACCTCCTCCAGCCTCCCTACTGTCTTTGGGAGCCTGGACCGGAAGCCGGGTCCCCCAGCT  
GCGCCTGGTGGCTGGGCCAGCAAGTGCTCAGGTCGACTGGAGGTGTGGCATGACCAGCGCTGGGGACC  
GTGTGTGACGATAGCTGGGACATGCGGGATTCAGCTGTGGTCTGCCGGGAGCTGGGCTGTGGTGGACCTC



AGCAGCCAGACCTGCTGCTGGCCGCTTTGGCTGGGGTGCGGGCCCATCTGGCTAGATGATGTGGGCTG  
TGTGGGACCGAGGCTTCACTGTCCGACTGCCCTGCTGCTCCCTGGGAAAGCACAACCTGCGCTCACAAT  
GAGGATGTTGGGGTCACTGCACTGGGCCCCAGGCCTGGACTCCATCTCAGACCCTTCACTGGAGCT  
GGATTCCTGGACTGGGGAGAGATCGGGATGCCTGGCTCCCGGGAGAGCTGGCCACCAAGCCCTCTGCAAG  
TGTGACTGCCAGTGTCTGGAGAAAACAACCACGAAGGCCCCAGGAAAAATGCCTAAGAGTACTAAGAAG  
TGGGTGACAAAAATGCAAAGAGACCAACCACTCAACCCCAAGTATGCCAACCAAGCAACCACTCCAGGG  
CCCAAAGCCCCAGACCTAACCTCACAGACCACTGCAGCACTGACCCTGAGGCCTCCCGAAGACCTAC  
CTCTGAGTTTACCAGAAGGCCGACCACGGAGGCCCCAGAGATGGACCTCTCACACCACTGCCACGCTG  
ACCCCTCAGGCCCCCGAGAACGGACCACTAAGACCATGGCAATGCTGACCACTCAAGGCCCCCAAGAAA  
TGACCTCTGAGTCCACTATCAAGAGTATCCCTCAGGCCTCCCTGGAGCCATCTGCTGAGATCCCAGAAGG  
GTCTCCAGAGTACCCAAAGACCCGGCCCCCTCTCCAGTGTAGCACCCTGGGGAATCAGGCCTGTTT  
CGGGTTCGTGCGCGATGGGCCAACCCCTGTGCTGGCCGGCTGGAAGTGTGGCATGCCGGACGCTGGG  
GAACAGTGTGTGATGACAACTGGGACCTGCGGGACGCCACTGTGGCTGCTGGAACTGGGCTGTGGAAA  
GGTCCGGCTCGAGTAGGCAAAACCCATTACGGCCCTGGGACTGGGCCCATCTGGCTGGATGACATGGGC  
TGTAAGGGAAGCGAGGCCTCACTGAGCGACTGCCCTCGGGGGCTTGGGGGAAGCACAACGTGACCACG  
AGGAAGACGTGGGGCTCAGCTGCACTGGCTACACAGACTATGACGATTATCCCCCTGGACCTGGGACCC  
CACCTCAAGAGAGGACCTGGCCAAGGGGACTACCACAGCGGGGGTACCTGGACACACTCTCCCTGGAGG  
ACCACCCGGCGCCGGTAGCTCCTCCCGCAATAAGGCGCCTGCCGGACACAGGCAGCAAAGATGGTT  
ACAAGTTCCTGGACGTGGGACACACCATCAGGAAGGGGCTGGCTGAGGGGACCCCTACCGCAGGCAA  
ACTAGGACCAACTCTTGGGGTGGCACCACCAGGAGCCAGGCAGTCTCCAACCTCTGAGAGTCCATGGA  
GACACAGTTCCTCGAGGAAACCGTGGCCGAGCGCCGCCACCGCGGCCGCTGCGACCAAGGACAGCGC  
CCCCAACCCGTCCTCCAGTCCCTCCGCTCTCCGGGACCCCAAGGCCAGCGCTGACCTCTGACTCCAG  
TCGAGAGCTCACTCCCACTCAGCCTTGACGTCGAGGGGACCTCTGACGCTCCGGACACTCACCCACC  
ACCCAGACCCGGCCTCCCGGACGAACCCGACCTCATCTTGACAAGCCCTGACTTTGCTTGTCCACCC  
CTGACTCCAGTGTGGTCCCGCTTGACCCGGAGCCCTCACCCACGCCCTTACCACCTTGCCCAAAGA  
GCTGACCTCTGACCCCTTACACCGTGGAGGTGACCAGCCTTCCCTACCTCAGAGCAGGTCCCAGAA  
TCTGACACAACCCAGATTTGGACACAACCTCCATACTCCAGTACAGTCTCAGAATATTCTAGATCCCAG  
ACCCCTCCCAAGCCCTCACCCCACTACTACCCTGATCCACCATGGCCCTGACCCCATCACAACCTT  
TAACCCTACTGTGACCCCTCACTTCCCTACCACCCTCACCCACCAGACCCCTCACCCACCACCATC  
ACTCACTCCACCATGATTCCTGACCCACCACAACCCCTCAACCTTACCACCATCACTCACTCCACCA  
TGATTCCTGACCCACCACAACCCCTCAACCTTACCACCATGCAGCCACCACAACCCCTCACTCCAC  
AACCCCTCACCCACCAGACCCCTCATCCACCACCATCACTCACTCCACCATGATTCCTGACCCACC  
ACAACCCCTCAACCCCTCACCCATGCAGCCACCACGATGCCTCATCCACCACGACCCCTCACCCCA  
CCACGACTCCTCACCCACCACAACCCCTCACCCACCACAACCCCTCACCCACCATGACTCCTGACCC  
CACCAGACCCCTTACCACCACCTACTCCTGATCCACCACGACCCCTCACCCACAACCTCCTGACCC  
TCCTCAACCCCTGTCATCACTACTGTGTCCCTTCAACCTCCTTGGGGACAGAATCTCCTCTCCCACTC  
TAGCACCACAGTCAAGCCAGTCTGCACCCCAAGTTCACCTTACAGCACCTGCCCTCACACCTCCAC  
ATCCCAGATACCCACCTTAGAGCCCTCTCCAGCCTTGGAGTCCAGCCCTCCAGGTCTCCACAGCCACA  
AGCATGGACCCACTGTCCACTGAGGACTTCAAGCCACCCAGAAGCCAGAGCCCAACCTAACCCCTCCAC  
CCACCCATACCCACACTCAGCCTCTGACCTTACTGTGTCCCTGACCCCTCCTTCCCCACAGCCCA  
CCCTTGGATCATCCTCCCTTGACCCCTCACCTAGGGCAACTCCTGGTCAGAGCCAGGCCCCAT  
GGTCCATGTGTGGCCCAACACCACCTGTAAGGGTTCATGGCTTGTGAGCCACCTGCCCTGGTGGAGCTGG  
TGGCTGCTGTGAGGGATGTGGGTGGTCACTGCAGAGACTGACCCAGGTCGTGGAACAGGAGCGGCAGGA  
GCGCCAAGCCCTGCTGCTGGGGTGCAGCAGCTGGTGAAGCTGCCCGGGGTCTGGGGCAGCTGGGTGAG  
GCTGTGAAGAGACTGGCAGAGATGGCTGGACCACCAGCATGCCTGCACCAACCACCACTACCCAGAGG  
AAGAAGAAAGACCCCTGAGGGGAGACGTG

ACGCGTACGCGGCCGCTCGAGCAGAACTCATCTCAGAAGAGGATCTGGCAGCAAATGATATCCTGGATT  
ACAAGGATGACGACGAT AAGGTTTAA

Protein Sequence: >RC226898 representing NM\_001144950  
 Red=Cloning site Green=Tags(s)

MRVLACLLAALVGIQAVERLRLADGPHGCAGRLEVWHGGRWGTVCDDGWDLRDAAVACRQLGCGGALAAP  
 GGAFEGEGAGPVWLSELACRGNELGLCHHRGWKAHICSHEDAGVVCAGQRVANSRDDSTSPLDGAPW  
 PGLLLELSPSTEEPLVTHAPRAGNPQNASRKKSPRPKQAKSTRAPLLTTGAPRQLRLVSGPHRCAGR  
 LEVWHGGRWGTVCDDGWDLRDAAVACRELGCGGALAAPGGARFGPGAGPVWMDVCGCGGGEQALRDCPRS  
 PWGRSNCDHSEDAGLVCTGPAPRLRLADGPHGCAGRLEVWHGGRWGSVCDDAWDLRDAAVACRELGCGGA  
 LAAPGGAFFGEGSGPIILDDLRCRGNELALRFPCARPWGQHDCHHREDAGAVCDGMPLGYVPTAPTDSN  
 NSTPREAASRPPSTMTSQAPGTAGVSPPPASPTVLWEPGPEAGSPQLRLVAGPSKCSGRLEVWHQQRWGT  
 VCDDSWMDRSAYVCRELGCGGPQPPDAAGRFGWGAGPIWLDVVCVGTASLSDCPAAPWGKHCAHN  
 EDVGTCTGPPGLDSISDPFSWSWIPGLGRDRDAWLPGELATKPSASVTASVLEKTTTKAPGKMPKSTKK  
 WVTKNKRPTTQPPVMTTKHSRAQSPDLTSQTAAALTEASRRPTSEFTRRPTTEAPQRWTSHTTATL  
 TPQAPRERTTKMAMLTQGPQEMTSESTIKSIPQASLEPSAEIPEGSPESPKDPAPSPSVSTTGESGLF  
 RVRLADGPNRCAGRLEVWHAGRWGTVCDDNWDLRDATVACWELGCGKVRPRVGKTHYGPGTGPIWLDMDG  
 CKGSEASLSDCPGAWGKHNCDEEDVGLTCTGYTDYDDYPPWTWDPTSREDLAKGTTTAGVPGHTLPWR  
 TTRRPGSSSPAIRRLPDTGSKDGYKLPTWDTPSGRGLAEGTPTAGKLGPTLGAGTTRSPGSPPTLRVHG  
 DTGSPRPWPERRPPRAARTAPTPSPGPSASPGPPGALTSOSSRELTPHSALTSEATSDADPTSPP  
 TPDASRTNPDILTSDFALSTPDSSVVPALTEPSPPTLPLPKELTSDPSTPSEVTSLSPTSEQVPE  
 SDTTPDLDTTPYSSTVSEYSRSPDPSPHPTTTTPDPTMAPDPITLNPVTVPHPPTTTPHPTTTPHPTTI  
 THSTMIPDPTTTPQPFITITHSTMIPDPTTTPQPFITMTPHTTTPHSTTPHPTTTPHPTTTPHPTTTPHPTT  
 TTPQPFITMTPHTTTPHPTTTPHPTTTPHPTTTPHPTTTPHPTTTPHPTTTPHPTTTPHPTTTPHPTTTPD  
 SSTPVIITVSLPTSLGTELSSPTLAPTVPKSLHPQLTFTAPAPHTSTSQIPTLESPALESRSSTAT  
 SMDPLSTEDFKPPRSQSPNLTTPPTHTPHASDLTVSPDPLLSPAHPLDHPPLDPLTLGPTPGQSPGPH  
 GPCVAPTPVRVMACEPPALVELVAAVRDVGGQLQRLTQVVEQERQERQALLLGLTQLVEAARGLGQLGE  
 AVKRLAEMAWTTSMPAPTTTTPEEEERPLRGDV

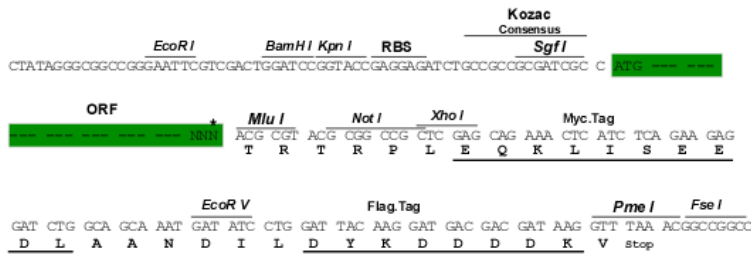
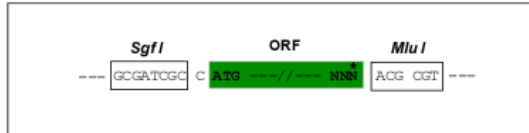
TRTRPLEQKLISEEDLAANDILDYKDDDDKV

Restriction Sites:

SgfI-MluI

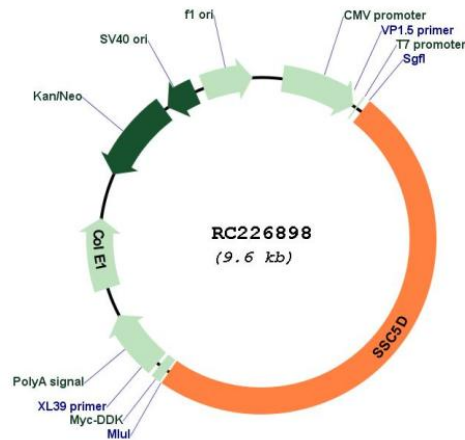
Cloning Scheme:

Cloning sites used for ORF Shuttling:



\* The last codon before the Stop codon of the ORF

## Plasmid Map:



ACCN: NM\_001144950

ORF Size: 4719 bp

OTI Disclaimer: The molecular sequence of this clone aligns with the gene accession number as a point of reference only. However, individual transcript sequences of the same gene can differ through naturally occurring variations (e.g. polymorphisms), each with its own valid existence. This clone is substantially in agreement with the reference, but a complete review of all prevailing variants is recommended prior to use. [More info](#)

OTI Annotation: This clone was engineered to express the complete ORF with an expression tag. Expression varies depending on the nature of the gene.

Components: The ORF clone is ion-exchange column purified and shipped in a 2D barcoded Matrix tube containing 10ug of transfection-ready, dried plasmid DNA (reconstitute with 100 ul of water).

Reconstitution Method:

1. Centrifuge at 5,000xg for 5min.
2. Carefully open the tube and add 100ul of sterile water to dissolve the DNA.
3. Close the tube and incubate for 10 minutes at room temperature.
4. Briefly vortex the tube and then do a quick spin (less than 5000xg) to concentrate the liquid at the bottom.
5. Store the suspended plasmid at -20°C. The DNA is stable for at least one year from date of shipping when stored at -20°C.

RefSeq: [NM\\_001144950.2](#)

RefSeq ORF: 4722 bp

Locus ID: 284297

UniProt ID: [A1L4H1](#)

Cytogenetics: 19q13.42

MW: 165.6 kDa

**Gene Summary:** Binds to extracellular matrix proteins. Binds to pathogen-associated molecular patterns (PAMPs) present on the cell walls of Gram-positive and Gram-negative bacteria and fungi, behaving as a pattern recognition receptor (PRR). Induces bacterial and fungal aggregation and subsequent inhibition of PAMP-induced cytokine release. Does not possess intrinsic bactericidal activity. May play a role in the innate defense and homeostasis of certain epithelial surfaces (By similarity).[UniProtKB/Swiss-Prot Function]