

## Product datasheet for RC226896L3

### CRF1 (CRHR1) (NM\_001145147) Human Tagged Lenti ORF Clone

#### Product data:

|                           |  |
|---------------------------|--|
| Product Type:             | Expression Plasmids  |
| Product Name:             | CRF1 (CRHR1) (NM_001145147) Human Tagged Lenti ORF Clone                   |
| Tag:                      | Myc-DDK  |
| Symbol:                   | CRF1   |
| Synonyms:                 | CRF-R; CRF-R-1; CRF-R1; CRF1; CRFR-1; CRFR1; CRH-R-1; CRH-R1; CRHR; CRHR1L |
| Mammalian Cell Selection: | Puromycin  |
| Vector:                   | pLenti-C-Myc-DDK-P2A-Puro (PS100092)                                       |
| E. coli Selection:        | Chloramphenicol (34 ug/mL)   |
| ORF Nucleotide Sequence:  | The ORF insert of this clone is exactly the same as(RC226896).             |
| Restriction Sites:        | SgfI-MluI  |
| Cloning Scheme:           |  |

Cloning sites used for ORF Shuttling:



\* The last codon before the Stop codon of the ORF.

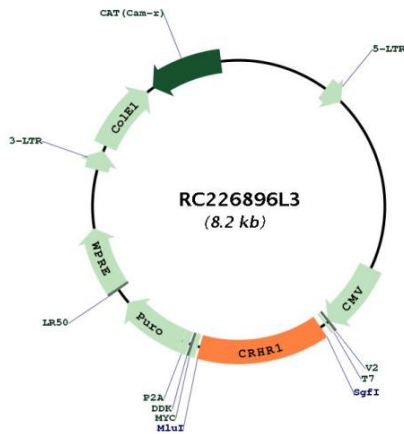
|           |              |
|-----------|--------------|
| ACCN:     | NM_001145147 |
| ORF Size: | 1125 bp      |



[View online »](#)

|                               |   |
|-------------------------------|---|
| <b>OTI Disclaimer:</b>        | The molecular sequence of this clone aligns with the gene accession number as a point of reference only. However, individual transcript sequences of the same gene can differ through naturally occurring variations (e.g. polymorphisms), each with its own valid existence. This clone is substantially in agreement with the reference, but a complete review of all prevailing variants is recommended prior to use. <a href="#">More info</a>  |
| <b>OTI Annotation:</b>        | This clone was engineered to express the complete ORF with an expression tag. Expression varies depending on the nature of the gene.  |
| <b>Components:</b>            | The ORF clone is ion-exchange column purified and shipped in a 2D barcoded Matrix tube containing 10ug of transfection-ready, dried plasmid DNA (reconstitute with 100 ul of water).  |
| <b>Reconstitution Method:</b> | <ol style="list-style-type: none"><li>1. Centrifuge at 5,000xg for 5min.</li><li>2. Carefully open the tube and add 100ul of sterile water to dissolve the DNA.</li><li>3. Close the tube and incubate for 10 minutes at room temperature.</li><li>4. Briefly vortex the tube and then do a quick spin (less than 5000xg) to concentrate the liquid at the bottom.</li><li>5. Store the suspended plasmid at -20°C. The DNA is stable for at least one year from date of shipping when stored at -20°C.</li></ol>   |
| <b>RefSeq:</b>                | <a href="#">NM_001145147.1</a>  |
| <b>RefSeq ORF:</b>            | 1128 bp   |
| <b>Locus ID:</b>              | 1394  |
| <b>UniProt ID:</b>            | <a href="#">P34998</a>  |
| <b>Cytogenetics:</b>          | 17q21.31  |
| <b>Protein Families:</b>      | Druggable Genome, GPCR, Transmembrane   |
| <b>Protein Pathways:</b>      | Long-term depression, Neuroactive ligand-receptor interaction   |
| <b>MW:</b>                    | 43.2 kDa  |
| <b>Gene Summary:</b>          | This gene encodes a G-protein coupled receptor that binds neuropeptides of the corticotropin releasing hormone family that are major regulators of the hypothalamic-pituitary-adrenal pathway. The encoded protein is essential for the activation of signal transduction pathways that regulate diverse physiological processes including stress, reproduction, immune response and obesity. Alternative splicing results in multiple transcript variants. Naturally-occurring readthrough transcription between this gene and upstream GeneID:147081 results in transcripts that encode isoforms that share similarity with the products of this gene. [provided by RefSeq, Aug 2016] |

Product images:



Circular map for RC226896L3