

## Product datasheet for **RC226890**

### PHOSPHO1 (NM\_001143804) Human Tagged ORF Clone

#### Product data:

Product Type:	Expression Plasmids
Product Name:	PHOSPHO1 (NM_001143804) Human Tagged ORF Clone
Tag:	Myc-DDK
Symbol:	PHOSPHO1
Mammalian Cell Selection:	Neomycin
Vector:	pCMV6-Entry (PS100001)
E. coli Selection:	Kanamycin (25 ug/mL)
ORF Nucleotide Sequence:	>RC226890 representing NM_001143804 Red=Cloning site Blue=ORF Green=Tags(s)

TTTTGTAATACGACTCACTATAGGGCGGCCGGAATTCGTCGACTGGATCCGGTACCGAGGAGATCTGCC  
GCC**CGATCGCC**

ATGTGCCAGCGCCTCTGGCCGTGGCCCGCTAACCAGCCTCTCCCGGGCGGGCTCCTGCCCGCCCCCTCT  
CGCTTGCCCCCTCCTCCTCCTCCTCCTGCTGCTCTCCCCCTGCTCCCAGGACGGCAGGATGGCCGCGCA  
GGGCGCGCCGCTTCTCCTGACCTTCGACTTCGACGAGACTATCGTGGACGAAACAGCGACGATTTCG  
ATCGTGCGCCCGCGCCGGCCAGCGGCTCCCGGAGAGCCTGCGAGCCACCTACCGCGAGGGCTTCTACA  
ACGAGTACATGCAGCGGCTTTCAAGTACCTGGGCGAGCAGGGCGTGCGCCGCGGGACCTGAGCGCCAT  
CTACGAAGCCATCCCTTTGTGCGCCAGGCATGAGCGACCTGCTGCAGTTTGTGGCAAAACAGGGCGCCTGC  
TTCGAGGTGATTCTCATCTCCGATGCCAACACCTTTGGCGTGGAGAGCTCGCTGCGCGCCCGCCGCCACC  
ACAGCCTGTTCCGCCGATCCTCAGCAACCCGTCGGGGCCGGATGCGCGGGGACTGCTGGCTCTGCGGCC  
GTTCCACACACAGCTGCGCGCGCTGCCCGCCAACATGTGCAAGCACAAAGGTGCTCAGCGACTACCTG  
CGCGAGCGGGCCACGACGGCGTGCCTTCGAGCGCCTTCTACGTGGGCGACGGCGCCAACGACTTCT  
GCCCATGGGGTGTGGCGGGCGGCGACGTGGCCTTCCCGCGCCGCGGTACCCCATGCACCGCCTCAT  
TCAGGAGGCCAGAAAGGCCGAGCCAGCTCGTTCCGCGCCAGCGTGGTGCCTGGGAAACGGCTGCAGAT  
GTGCGCCTCCACCTGCAACAGGTGCTGAAGTCGTGC

**ACGCGT**ACGCGGCCGCTCGAGCAGAAACTCATCTCAGAAGAGGATCTGGCAGCAAATGATATCCTGGATT  
ACAAGGATGACGACGATAAGGTTTAA



[View online »](#)

**Protein Sequence:** >RC226890 representing NM\_001143804  
Red=Cloning site Green=Tags(s)

MCQRLWPWANQPLPGLLPRPLSLAPSSSSSCCSPPCSQDGRMAAQGAPRFLFTDFDETIVDENSDDS  
 IVRAAPGQRLPESLRATYREGFYNEYMQRVFKYLGEQGVPRDL SAIYEAIPLSPGMSDLLQFVAKQGAC  
 FEVILISDANTFGVESSLRAAGHSLFRRILSNPSGPDARGLLALRPFHHS CARCPANMCKHKVLS DYL  
 RERAHDGVHFERLFYVGDGANDFCPMGLLAGGDVAFPRRGYPMHRLIQEAQKAEPSSFRASVVPWETAAD  
 VRLHLQQLKSC

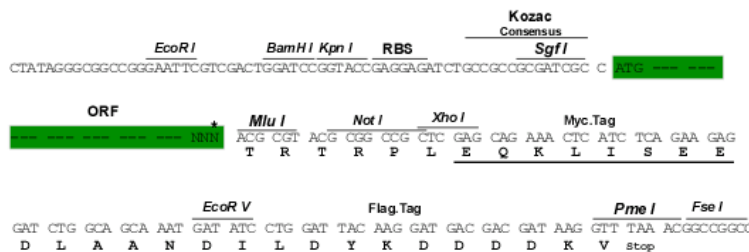
TRTRPLEQKLISEEDLAANDILDYKDDDDKV

**Chromatograms:** [https://cdn.origene.com/chromatograms/mk8050\\_a08.zip](https://cdn.origene.com/chromatograms/mk8050_a08.zip)

**Restriction Sites:** Sgfl-MluI

**Cloning Scheme:**

Cloning sites used for ORF Shuttling:



\* The last codon before the Stop codon of the ORF

**ACCN:** NM\_001143804

**ORF Size:** 876 bp

**OTI Disclaimer:** The molecular sequence of this clone aligns with the gene accession number as a point of reference only. However, individual transcript sequences of the same gene can differ through naturally occurring variations (e.g. polymorphisms), each with its own valid existence. This clone is substantially in agreement with the reference, but a complete review of all prevailing variants is recommended prior to use. [More info](#)

**OTI Annotation:** This clone was engineered to express the complete ORF with an expression tag. Expression varies depending on the nature of the gene.

**Components:** The ORF clone is ion-exchange column purified and shipped in a 2D barcoded Matrix tube containing 10ug of transfection-ready, dried plasmid DNA (reconstitute with 100 ul of water).

**Reconstitution Method:**

1. Centrifuge at 5,000xg for 5min.
2. Carefully open the tube and add 100ul of sterile water to dissolve the DNA.
3. Close the tube and incubate for 10 minutes at room temperature.
4. Briefly vortex the tube and then do a quick spin (less than 5000xg) to concentrate the liquid at the bottom.
5. Store the suspended plasmid at -20°C. The DNA is stable for at least one year from date of shipping when stored at -20°C.

**RefSeq:** [NM\\_001143804.1](#), [NP\\_001137276.1](#)

**RefSeq ORF:** 879 bp

**Locus ID:** 162466

**UniProt ID:** [Q8TCT1](#)

**Cytogenetics:** 17q21.32

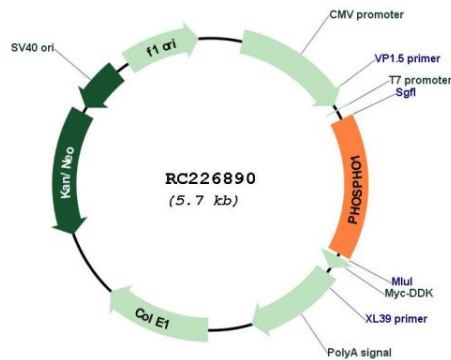
**Protein Families:** Druggable Genome

**Protein Pathways:** Glycerophospholipid metabolism

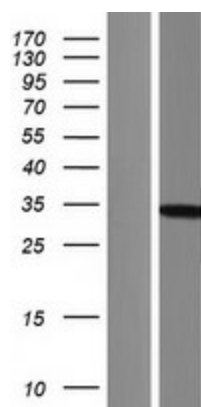
**MW:** 32.2 kDa

**Gene Summary:** Phosphatase that has a high activity toward phosphoethanolamine (PEA) and phosphocholine (PCho). Involved in the generation of inorganic phosphate for bone mineralization. [UniProtKB/Swiss-Prot Function]

### Product images:



Circular map for RC226890



Western blot validation of overexpression lysate (Cat# [LY428350]) using anti-DDK antibody (Cat# [TA50011-100]). Left: Cell lysates from untransfected HEK293T cells; Right: Cell lysates from HEK293T cells transfected with RC226890 using transfection reagent MegaTran 2.0 (Cat# [TT210002]).