

## Product datasheet for RC226887

### DOLPP1 (NM\_001135917) Human Tagged ORF Clone

#### Product data:

**Product Type:** Expression Plasmids  
**Product Name:** DOLPP1 (NM\_001135917) Human Tagged ORF Clone  
**Tag:** Myc-DDK  
**Symbol:** DOLPP1  
**Synonyms:** LSFR2  
**Mammalian Cell Selection:** Neomycin  
**Vector:** pCMV6-Entry (PS100001)  
**E. coli Selection:** Kanamycin (25 ug/mL)  
**ORF Nucleotide Sequence:** >RC226887 representing NM\_001135917  
 Red=Cloning site Blue=ORF Green=Tags(s)

TTTTGTAATACGACTCACTATAGGGCGGCCGGAATTCGTCGACTGGATCCGGTACCGAGGAGATCTGCC  
 GCC**CGATCGCC**

ATGGCAGCGGACGGACAGTGCTCGCTCCCCGCTTCATGGCGGCCGGTGACCCCTACCCACGTGGAATATC  
 CTGCAGGTGATCTCTGGCCACCTCCTTGCTACCTGAGCCTCAGCCCTGTATTTGTCATCGTCGGTTT  
 CGTGACCCTCATCATATTAAGCGGGAGCTGCACACGATCTCCTTCCTGGGGCCTGGCACTGAACGAG  
 GGGTCAACTGGCTGATCAAAACGTCATCCAGGAGCCACGGCCCTGTGGAGGCCCCACACAGCAGTGG  
 GCACCAAGTACGGGATGCCCTCCAGCCATCCAGTTTATGTGGTCTTCTCCGCTATTCTTCTTTT  
 CCTGTATTTAAGAATGCACCAAACAACGCCAGTTCTGGACTTGCTGTGGAGGCAGTGTCTCC  
 CTGGGACTCCTCGCTGTGGCCTTCTAGTCTCCTACAGCAGGCCTGTCTCCGAGTTCTTCTAATCCGAG  
 ACACAAGCCTATTCCCAACGACTCTGGTTTGTAGTACACGGTAACCCGGGCAGAAGCCAGGAACAGACA  
 ACGCAAGCTGGGGACGAACTGCAG

**ACGCGT**ACGCGGCCGCTCGAGCAGAACTCATCTCAGAAGAGGATCTGGCAGCAATGATATCCTGGATT  
 ACAAGGATGACGACGATAAGGTTTAA

**Protein Sequence:** >RC226887 representing NM\_001135917  
 Red=Cloning site Green=Tags(s)

MAADGQCSLPASWRPVTLTHVEYPAGDLSGHELLAYLSLSPVFVIVGFVTLIIFKRELHTISFLGGLALNE  
 GVNWLIKNVIQEPRPCGGPHTAVGTKYGMPSHSHQFMWFFSVYSFLFLYLRMQTNARFLDLLWRHVLS  
 LGLLAVAFVLSYSRPVSEFFLIRDTSVIPNVLWFEYTVTRAEARNRQRKLGTKLQ

**TRTRPLEQKLI**SEEDLAANDILDYKDDDDKV

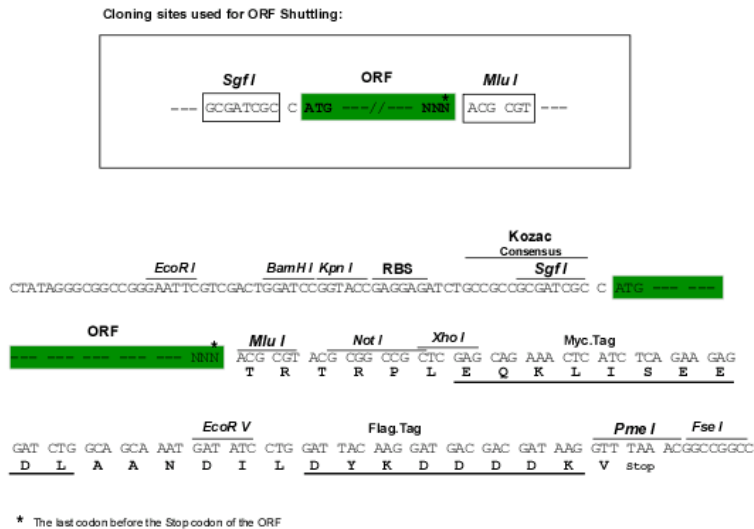


[View online »](#)

**Chromatograms:** [https://cdn.origene.com/chromatograms/ja1439\\_e11.zip](https://cdn.origene.com/chromatograms/ja1439_e11.zip)

**Restriction Sites:** SgfI-MluI

**Cloning Scheme:**



**ACCN:** NM\_001135917

**ORF Size:** 585 bp

**OTI Disclaimer:** The molecular sequence of this clone aligns with the gene accession number as a point of reference only. However, individual transcript sequences of the same gene can differ through naturally occurring variations (e.g. polymorphisms), each with its own valid existence. This clone is substantially in agreement with the reference, but a complete review of all prevailing variants is recommended prior to use. [More info](#)

**OTI Annotation:** This clone was engineered to express the complete ORF with an expression tag. Expression varies depending on the nature of the gene.

**Components:** The ORF clone is ion-exchange column purified and shipped in a 2D barcoded Matrix tube containing 10ug of transfection-ready, dried plasmid DNA (reconstitute with 100 ul of water).

**Reconstitution Method:**

1. Centrifuge at 5,000xg for 5min.
2. Carefully open the tube and add 100ul of sterile water to dissolve the DNA.
3. Close the tube and incubate for 10 minutes at room temperature.
4. Briefly vortex the tube and then do a quick spin (less than 5000xg) to concentrate the liquid at the bottom.
5. Store the suspended plasmid at -20°C. The DNA is stable for at least one year from date of shipping when stored at -20°C.

**RefSeq:** [NM\\_001135917.2](#)

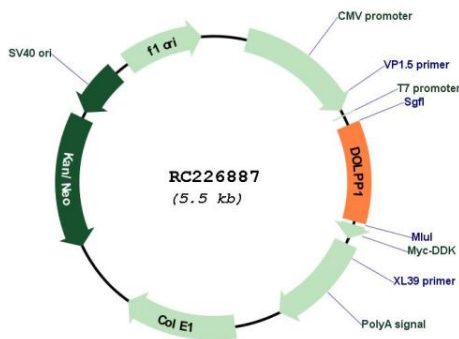
**RefSeq ORF:** 588 bp

**Locus ID:** 57171

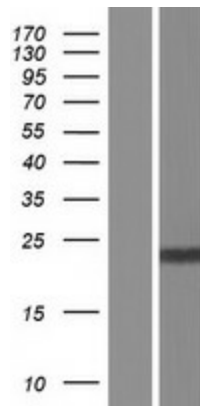
**UniProt ID:** [Q86YN1](#)

**Cytogenetics:** 9q34.11  
**Protein Families:** Druggable Genome, Transmembrane  
**Protein Pathways:** N-Glycan biosynthesis  
**MW:** 22 kDa  
**Gene Summary:** A similar gene has been characterized in mice and encodes dolichyl pyrophosphate (Dol-P-P) phosphatase. This protein dephosphorylates dolichyl pyrophosphate so that it may be re-utilized as a glycosyl carrier lipid by the oligosaccharyltransferase multisubunit complex in the ER. Alternative splicing results in multiple transcript variants and protein isoforms. [provided by RefSeq, Jun 2012]

**Product images:**



Circular map for RC226887



Western blot validation of overexpression lysate (Cat# [LY427729]) using anti-DDK antibody (Cat# [TA50011-100]). Left: Cell lysates from untransfected HEK293T cells; Right: Cell lysates from HEK293T cells transfected with RC226887 using transfection reagent MegaTran 2.0 (Cat# [TT210002]).