

Product datasheet for RC226879

HNT (NTM) (NM_001144058) Human Tagged ORF Clone

Product data:

Product Type:	Expression Plasmids
Product Name:	HNT (NTM) (NM_001144058) Human Tagged ORF Clone
Tag:	Myc-DDK
Symbol:	HNT
Synonyms:	CEPU-1; HNT; IGLON2; NTRI
Mammalian Cell Selection:	Neomycin
Vector:	pCMV6-Entry (PS100001)
E. coli Selection:	Kanamycin (25 ug/mL)
ORF Nucleotide Sequence:	>RC226879 representing NM_001144058 Red=Cloning site Blue=ORF Green=Tags(s)

TTTTGTAATACGACTCACTATAGGGCGGCCGGAATTCGTCGACTGGATCCGGTACCGAGGAGATCTGCC
GCC**CGGATCGCC**

ATGGGGTCTGTGGGTACCTGTTCTGCCCTGGAAGTGCCTCGTGGTCTGTCTCTCAGGCTGCTGTTCC
TTGTACCCACAGGAGTGCCCGTGCAGCGGAGATGCCACCTTCCCAAAGCTATGGACAACGTGACGGT
CCGGCAGGGGAGAGCGCCACCCTCAGGTGCACTATTGACAACCGGGTACCCGGGTGGCTGGCTAAAC
CGCAGCACCATCCTCTATGCTGGGAATGACAAGTGGTGCCTGGATCCTCGCGTGGTCTTCTGAGCAACA
CCCAAACGAGTACAGCATCGAGATCCAGAACGTGGATGTGTATGACGAGGGCCCTTACACCTGCTCGGT
GCAGACAGACAACCACCCAAAGACCTCTAGGGTCCACCTCATTGTGCAAGTATCTCCAAAATTGTAGAG
ATTTCTTCAGATATCTCCATTAATGAAGGGAACAATATTAGCCTCACCTGCATAGCAACTGGTAGACCAG
AGCCTACGGTTACTTGGAGACACATCTCTCCAAAGCGGTTGGCTTTGTGAGTGAAGACGAATACTTGGAA
AATTCAGGGCATCACCAGGGAGCAGTACGGGGACTACGAGTGCAGTGCCTCCAATGACGTGGCCGCGCCC
GTGGTACGGAGAGTAAAGGTACCCGTGAACATCCACCATACATTTGAGAAGCCAAGGGTACAGGTGTCC
CCGTGGGACAAAAGGGGACACTGCAGTGTGAAGCCTCAGCAGTCCCCTCAGCAGAATCCAGTGGTACAA
GGATGACAAAAGACTGATTGAAGGAAAGAAAGGGGTGAAAGTGGAAAACAGACCTTTCTCTCAAACTC
ATCTTCTCAATGTCTCTGAACATGACTATGGAACTACACTTGGTGGCCTCCAACAAGCTGGGCCACA
CCAATGCCAGCATATGCTATTTGAAGTGAAGTACAGCCCTGACCCCTTGAAAAGTCCAGGCGCGCT
CAGCGAGGTGAGCAACGGCACGTCGAGGAGGGCAGGCTGCGTCTGGCTGCTGCCTTTCTGGTCTTGAC
CTGCTTCTCAAATTT

ACGCGTACGCGGCCGCTCGAGCAGAACTCATCTCAGAAGAGGATCTGGCAGCAAATGATATCCTGGATT
ACAAGGATGACGACGATAAGGTTAA



[View online »](#)

Protein Sequence: >RC226879 representing NM_001144058
Red=Cloning site Green=Tags(s)

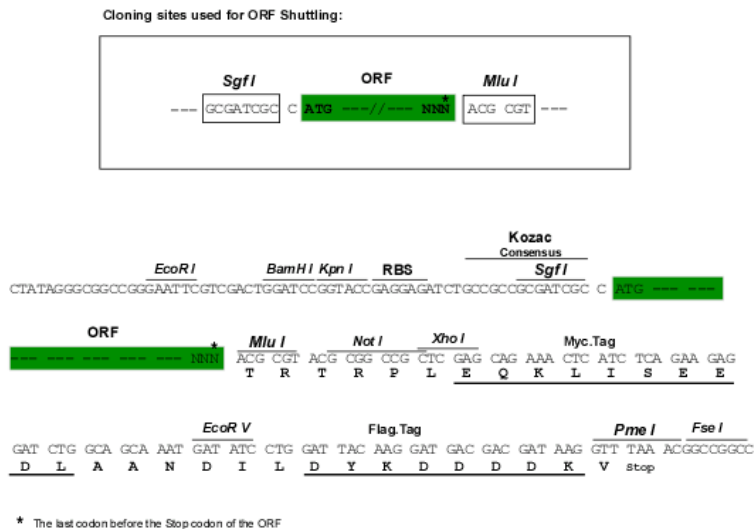
MGVCGYLFLPWKCLVVVSLRLLFLVPTGVPVRSGDATFPKAMDNVTVRQGESATLRCTIDNRVTRVAWLN
 RSTILYAGNDKWCLDPRVLLSNTQTQYSIEIQNVVYDEGPYTCVQTDNHPKTSRVHLIVQVSPKIVE
 ISSDISINEGNNISLTCIATGRPEPTVTRHISPKAVGFVSEDEYLEIQGITREQSGDYECASNDVAAP
 VVRRVKVTVNYPPYISEAKGTGVPVQKGTLQCEASAVPSAEFQWYKDDKRLIEGKKGVKVENRPFLLSKL
 IFFNVSEHDYGNVTCVASNKLGHNASIMLFEVKTTALTPWKGPVAVSEVSNGTSSRRAGCVWLLPLLVLH
 LLLKF

TRTRPLEQKLISEEDLAANDILDYKDDDDKV

Chromatograms: https://cdn.origene.com/chromatograms/mk8054_a10.zip

Restriction Sites: SgfI-MluI

Cloning Scheme:



ACCN: NM_001144058

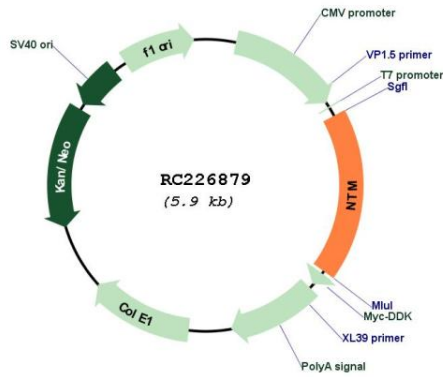
ORF Size: 1065 bp

OTI Disclaimer: Due to the inherent nature of this plasmid, standard methods to replicate additional amounts of DNA in E. coli are highly likely to result in mutations and/or rearrangements. Therefore, OriGene does not guarantee the capability to replicate this plasmid DNA. Additional amounts of DNA can be purchased from OriGene with batch-specific, full-sequence verification at a reduced cost. Please contact our customer care team at custsupport@origene.com or by calling 301.340.3188 option 3 for pricing and delivery.

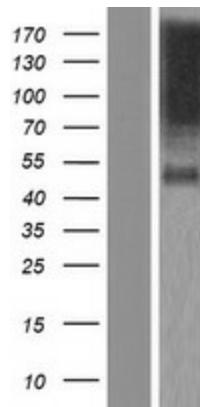
The molecular sequence of this clone aligns with the gene accession number as a point of reference only. However, individual transcript sequences of the same gene can differ through naturally occurring variations (e.g. polymorphisms), each with its own valid existence. This clone is substantially in agreement with the reference, but a complete review of all prevailing variants is recommended prior to use. [More info](#)

OTI Annotation:	This clone was engineered to express the complete ORF with an expression tag. Expression varies depending on the nature of the gene.
Components:	The ORF clone is ion-exchange column purified and shipped in a 2D barcoded Matrix tube containing 10ug of transfection-ready, dried plasmid DNA (reconstitute with 100 ul of water).
Reconstitution Method:	<ol style="list-style-type: none">1. Centrifuge at 5,000xg for 5min.2. Carefully open the tube and add 100ul of sterile water to dissolve the DNA.3. Close the tube and incubate for 10 minutes at room temperature.4. Briefly vortex the tube and then do a quick spin (less than 5000xg) to concentrate the liquid at the bottom.5. Store the suspended plasmid at -20°C. The DNA is stable for at least one year from date of shipping when stored at -20°C.
RefSeq:	<u>NM_001144058.1</u> , <u>NP_001137530.1</u>
RefSeq ORF:	1068 bp
Locus ID:	50863
UniProt ID:	<u>Q9P121</u>
Cytogenetics:	11q25
Protein Families:	Transmembrane
MW:	39 kDa
Gene Summary:	This gene encodes a member of the IgLON (LAMP, OBCAM, Ntm) family of immunoglobulin (Ig) domain-containing glycosylphosphatidylinositol (GPI)-anchored cell adhesion molecules. The encoded protein may promote neurite outgrowth and adhesion via a homophilic mechanism. This gene is closely linked to a related family member, opioid binding protein/cell adhesion molecule-like (OPCML), on chromosome 11. Multiple transcript variants encoding different isoforms have been found for this gene. [provided by RefSeq, Jan 2009]

Product images:



Circular map for RC226879



Western blot validation of overexpression lysate (Cat# [LY428485]) using anti-DDK antibody (Cat# [TA50011-100]). Left: Cell lysates from untransfected HEK293T cells; Right: Cell lysates from HEK293T cells transfected with RC226879 using transfection reagent MegaTran 2.0 (Cat# [TT210002]).