

## Product datasheet for **RC226874**

### INAVA (NM\_001142569) Human Tagged ORF Clone

#### Product data:

Product Type:	Expression Plasmids
Product Name:	INAVA (NM_001142569) Human Tagged ORF Clone
Tag:	Myc-DDK
Symbol:	INAVA
Synonyms:	C1orf106
Mammalian Cell Selection:	Neomycin
Vector:	pCMV6-Entry (PS100001)
E. coli Selection:	Kanamycin (25 ug/mL)



[View online »](#)

**ORF Nucleotide Sequence:**

>RC226874 representing NM\_001142569  
 Red=Cloning site Blue=ORF Green=Tags(s)

TTTTGTAATACGACTCACTATAGGGCGGCCGGAATTCGTCGACTGGATCCGGTACCGAGGAGATCTGCC  
 GCC**CGGATCGCC**

ATGGAGAGTAAGGATGAGGTCAGCGACACCCAGTGGCATCATCTGCAGTCTGGCCCCGACAGCCCGG  
 TCTCCCAATGAAGGAGCTGACCCATGCAGTGCACAAGCAGCAGAGGGCCCTGGAAGCGAGGCTGGAGGC  
 CTGCCTGGAGGAGCTGAGGAGACTCTGCCTTCGGGAAGCGGAGCTGACGGGCACCTTGCCAGCGGAGTAT  
 CCCCTCAAACCAGGGGAAAAGGCCCCAAAGGTTGCGCCGAGGATCGGAGCGGCTTACAACTGGATGACT  
 GGGCCTTGACAGAGAGGACCCCTAAGCAGCCTGGAGCGCCAGCTGGCCCTGCAGCTGCAGATCACAGA  
 GGCAGCCCGTGGCTGTGCCTGGAGGAGAACCTCAGCAGGAGGCTCGGCGGCAGCGGAAGCACTCCATG  
 CTGCAGGAGGAGAAGAAGCTGCAGGAGCTCCAGCGCTGCCTGGTGCAGCGCGGCGCAATAGCGAGCCAC  
 CTCGGCTGCTGCTCTCCCCTGGGCCGAGAGCTCAGTGCCTCTGATGACAGCTCCCTGTCAGATGGGT  
 CCTCTGGAGGAAGGAATCCCAAGTGCCAAAACCTCCTCCAGAGTCTCCAGCCCCACCTTCTCGGCC  
 CTCCCACCCAAACCTTGAGGGTCTGCAGCCAACAGGACCTGAGGCTGGGAGCCAGAACGGGCTCCAG  
 TCCAGAACAGCCCTGGAAGGAAACCAGCTGGACCACCCCTATGAGAAGCCAGGAAGTCTTCTGAGCC  
 CTGGAGCGAGTCCAGCAGCCAGCCACACACAGGATGGGCCAGTGCCTCCAGCCTGTGGTCTCTG  
 GAGCCTGCCTCTACCACGTGGTCCCATCCGTGGTGTCTGCGCCAGTGGCAGGGCCGACCAAGTGGCC  
 CAGCCACCCCTGAGATACAGGGGAGGAGGGCCAGTCCGAGTCTCTGAGGGTGGATTCTTCCGGGCGGG  
 TCCTGAGGGCCGAGGTCGACGCGCTTCCCGCCGCGCCCACTACTACACGGTGACAGTGCAGAT  
 TCCTGCTTCCCGCGACCAAGCCCCGCTGCCACGCGCCCTGCCACTCCTGCTCAGAAGACAGTGGCT  
 CTGAGCTCTCCAGCATCTCCCACCCACTTCGCGGGCAGCAGCAGCCCGACATCTCTTCTGCAGCC  
 TCTCTCCCTCCCAAGACCCATCGTCACGCGGGGCTGGGTCCAGCCGCGCAGCAGAGAGCTGGTCCGC  
 CACCACCCCAAGCTACTGCTGCCGCTGGCTATTTCCCGCGGGGCGGTACGTGGTGGTGGCTGAGAGCC  
 CCCTGCCGCTGGCGAGTGGGAGCTGTGCCGCGCAGCCCGGGCCCTGCTTACGAGGAGGAGGGCACTCC  
 CCTGCGCTACCAGCGTCTGGTGCCTCCCGCAGCCGATCGTGGGAGCGCCCTCCTGAAGGACAGCCCG  
 GCAGGCCGGGGCTCAGCAAGGCCGCGGTGTCGAGGAGCTCAAGTGGTGGCAGCAGCGTGCACGCCCTCC  
 GGAGCACCCGACCCACTCACTGGACCCCAAGGAGCTTCCGGGTGAGGAGCTGCCCTTGGGAGAGA  
 GGGCTTCGGACGAGCCCTGGGACCCGGGCACAGGTGCCACAGTTTGTGTGCTGCGGAGATCGCCTGAT  
 GGGGCCCTGTGCAAGTCTTTGTACCTGAAAAGGAGAGATCATCAGCCAGGTG

**ACGCGT**ACGCGGGCGCTCGAGCAGAACTCATCTCAGAAGAGGATCTGGCAGCAAATGATATCCTGGATT  
 ACAAGGATGACGACGATAAGGTTTAA

**Protein Sequence:**

>RC226874 representing NM\_001142569  
 Red=Cloning site Green=Tags(s)

MESKDEVSDTDSGIILQSGPDSVSPMKELTHAVHKQQRALRLEACLEELRRLCLREAELTGTLPAEY  
 PLKPGEKAPKVRRRIGAAAYKLDWALHREDPLSSLERQLALQLQITEARRLCLEENLSRQARRQRKHS  
 LQEEKQLQELQRCLVERRRNSEPPAAALPLGREL SASDDSSLSDGLLLEEEESQVPKPPPEPAPPSPR  
 LPPQTLLEGLQPTGPEAGSPERAPVQNSPWKETS LDHPYEKPKRSSEPWSESSPATTPQDGPSSSLWLL  
 EPASYHVVPIRGVPGWQGRTSAPATPEIQGRRGQSLSLRVDSFRAGPEGRGRSAFRRRPTHYTVTPD  
 SCFPATKPPPLPHAACHSCSEDSGSDVSSI SHPTSPGSSSPDISFLQPLSPPKTHRRHGAWVPAGSRELVA  
 HHPKLLLPPGYFPAGRYVVAESPLPPGEWELCRAAPGPAYEEEGTPLRYQLVPSRSRIVRTPSLKDSP  
 AGRGLSKAAVSEELKWWHERARLRSTRPHSLDRQGAFRVRSPLPLGREGFRALGPRAQVPTVCVLRSPD  
 GAPVQVFVPEKGEIISQV

**TR**TRPLEQKLISEEDLAANDILDYKDDDDKV

**Chromatograms:**

[https://cdn.origene.com/chromatograms/mg3926\\_a09.zip](https://cdn.origene.com/chromatograms/mg3926_a09.zip)

**Restriction Sites:**

Sgfl-Mlul

**Cloning Scheme:**


**ACCN:** NM\_001142569

**ORF Size:** 1734 bp

**OTI Disclaimer:** The molecular sequence of this clone aligns with the gene accession number as a point of reference only. However, individual transcript sequences of the same gene can differ through naturally occurring variations (e.g. polymorphisms), each with its own valid existence. This clone is substantially in agreement with the reference, but a complete review of all prevailing variants is recommended prior to use. [More info](#)

**OTI Annotation:** This clone was engineered to express the complete ORF with an expression tag. Expression varies depending on the nature of the gene.

**Components:** The ORF clone is ion-exchange column purified and shipped in a 2D barcoded Matrix tube containing 10ug of transfection-ready, dried plasmid DNA (reconstitute with 100 ul of water).

- Reconstitution Method:**
1. Centrifuge at 5,000xg for 5min.
  2. Carefully open the tube and add 100ul of sterile water to dissolve the DNA.
  3. Close the tube and incubate for 10 minutes at room temperature.
  4. Briefly vortex the tube and then do a quick spin (less than 5000xg) to concentrate the liquid at the bottom.
  5. Store the suspended plasmid at -20°C. The DNA is stable for at least one year from date of shipping when stored at -20°C.

**RefSeq:** [NM\\_001142569.3](#)

**RefSeq ORF:** 1737 bp

**Locus ID:** 55765

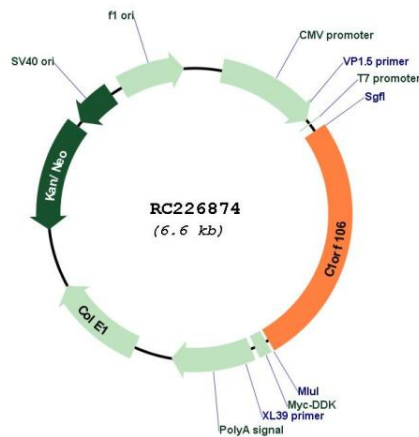
**UniProt ID:** [Q3KP66](#)

**Cytogenetics:** 1q32.1

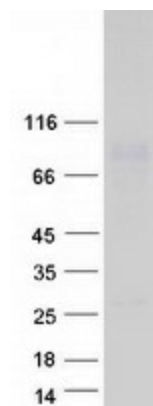
**MW:** 63.5 kDa

**Gene Summary:**

Expressed in peripheral macrophages and intestinal myeloid-derived cells, is required for optimal PRR (pattern recognition receptor)-induced signaling, cytokine secretion, and bacterial clearance. Upon stimulation of a broad range of PRRs (pattern recognition receptor) such as NOD2 or TLR2, TLR3, TLR4, TLR5, TLR7 and TLR9, associates with YWHAQ/14-3-3T, which in turn leads to the recruitment and activation of MAP kinases and NF-kappa-B signaling complexes that amplifies PRR-induced downstream signals and cytokine secretion (PubMed:28436939). In the intestine, regulates adherens junction stability by regulating the degradation of CYTH1 and CYTH2, probably acting as substrate cofactor for SCF E3 ubiquitin-protein ligase complexes. Stabilizes adherens junctions by limiting CYTH1-dependent ARF6 activation (PubMed:29420262).[UniProtKB/Swiss-Prot Function]

**Product images:**


Circular map for RC226874



Coomassie blue staining of purified INAVA protein (Cat# [TP326874]). The protein was produced from HEK293T cells transfected with INAVA cDNA clone (Cat# RC226874) using MegaTran 2.0 (Cat# [TT210002]).