

Product datasheet for **RC226861**

GPR56 (ADGRG1) (NM_001145771) Human Tagged ORF Clone

Product data:

Product Type:	Expression Plasmids
Product Name:	GPR56 (ADGRG1) (NM_001145771) Human Tagged ORF Clone
Tag:	Myc-DDK
Symbol:	GPR56
Synonyms:	BFPP; BPPR; GPR56; TM7LN4; TM7XN1
Mammalian Cell Selection:	Neomycin
Vector:	pCMV6-Entry (PS100001)
E. coli Selection:	Kanamycin (25 ug/mL)



[View online »](#)

ORF Nucleotide
Sequence:

>RC226861 ORF sequence
Red=Cloning site Blue=ORF Green=Tags(s)

TTTTGTAATACGACTCACTATAGGGCGGCCGGAATTCGTCGACTGGATCCGGTACCGAGGAGATCTGCC
GCCGCGATCGCC

ATGACTCCCCAGTCGCTGCTGCAGACGACACTGTTCTCTGCTGAGTCTGCTTTCCTGGTCCAAGGTGCC
ACGGCAGGGGCCACAGGGAAGACTTTCGCTTCTGCAGCCAGCGGAACCAGACACACAGGAGCAGCTCCA
CTACAAACCCACACCAGACCTGCCATCTCCATCGAGAATCCGAAGAGGCCCTCACAGTCCATGCCCT
TTCCTGCAGCCACCCTGCTTCCCGATCCTTCCCTGACCCAGGGGCCTCTACCACTTCTGCCTTACT
GGAACCGACATGCTGGGAGATTACATCTTCTATGGCAAGCGTGACTTCTTGCTGAGTGACAAAGCCTC
TAGCCTCTCTGCTTCCAGCACCAGGAGAGCCTGGCTCAGGGCCCCCGCTGTTAGCCACTTCTGTC
ACCTCCTGGTGGAGCCCTCAGAACATCAGCCTGCCAGTGCCGCCAGTTACCTTCTCCTCCACAGTC
CTCCCCACACGGCCGCTACAATGCCTCGGTGGACATGTGCGAGCTCAAAGGGACCTCCAGCTGCTCAG
CCAGTTCTGAAGCATCCCCAGAAGGCCCAAGGAGGCCCTCGGCTGCCCGCCAGCCAGCAGTTGCAG
AGCCTGGAGTCGAAACTGACCTCTGTGAGATTCATGGGGGACATGGTGTCTTCGAGGAGACCGGATCA
ACGCCACGGTGTGGAAGCTCCAGCCACAGCCGGCCTCCAGGACCTGCACATCCACTCCCGGCAGGAGGA
GGAGCAGAGCGAGATCATGGAGTACTCGGTGCTGCTGCCTCGAACACTCTTCCAGAGGACGAAAGCCGG
AGCGGGGAGGCTGAGAAGAGACTCCTCCTGGTGGACTTACGACGCAAGCCCTGTTCCAGGACAAGAATT
CCAGCCACGTCTGGGTGAGAAGTCTTGGGGATTGTGGTACAGAACACCAAAGTAGCCAACCTCACGGA
GCCCGTGGTGCTCACCTCCAGCACCAGCTACAGCCGAAGAATGTGACTCTGCAATGTGTGTTCTGGGT
GAAGACCCACATTGAGCAGCCCGGGCATTGGAGCAGTGTGGTGTGAGACCGTCAGGAGAGAAAACCC
AAACATCCTGCTTCTGCAACCATTGACCTACTTTGCAGTGTGATGGTCTCCTCGGTGGAGGTGGACGC
CGTGCACAAGCACTACCTGAGCCTCCTCCTACGTGGGCTGTGTCGTCTCGCCCTGGCCTGCCTTGT
ACCATTGCCCGCTACCTCTGCTCCAGGGTGCCCTGCCGTGCAGGAGGAAACCTCGGGACTACACCATCA
AGGTGCACATGAACCTGCTGCTGGCCGTCTTCTGCTGGACACGAGCTTCTGCTCAGCGAGCCGGTGGC
CCTGACAGGCTCTGAGGCTGGCTGCCGAGCCAGTGCCATCTTCTGCACTTCTCCTGCTCACCTGCCTT
TCCTGGATGGGCCTCGAGGGGTACAACCTCTACCGACTCGTGGTGGAGGTCTTGGCACCTATGTCCCTG
GCTACCTACTCAAGCTGAGCGCCATGGGTGGGCTTCCCATCTTCTGGTGACGCTGGTGGCCCTGGT
GGATGTGGACAATATGGCCCCATCATCTTGGCTGTGCATAGGACTCCAGAGGGCGTCATCTACCCTTCC
ATGTGCTGGATCCGGACTCCCTGGTCACTACATCACCACCTGGGCCTTTCAGCCTGGTGTCTTCTGT
TCAACATGGCCATGCTAGCCACCATGGTGGTGCAGATCCTGCGGCTGCGCCCCACACCCAAAAGTGGTC
ACATGTGCTGACACTGCTGGGCCTCAGCCTGGTCTTGGCCTGCCCTGGGCCTTGATCTTCTTCTCCTT
GCTTCTGGCACCTTCCAGCTTGTGCTCCTACCTTTTCAGCATCATCACCTCCTTCCAAGGCTTCTCTCA
TCTTACTTGGTACTGGTCCATGCGGCTGCAGGCCGGGTGGCCCTCCCTCTGAAGAGCAACTCAGA
CAGCGCCAGGCTCCCATCAGCTCGGGCAGCACCTCGTCCAGCCGCATC

ACGCGTACGCGGCCGCTCGAGCAGAACTCATCTCAGAAGAGGATCTGGCAGCAATGATATCCTGGATT
ACAAGGATGACGACGATAAGGTTTAA

Protein Sequence: >RC226861 protein sequence
 Red=Cloning site Green=Tags(s)

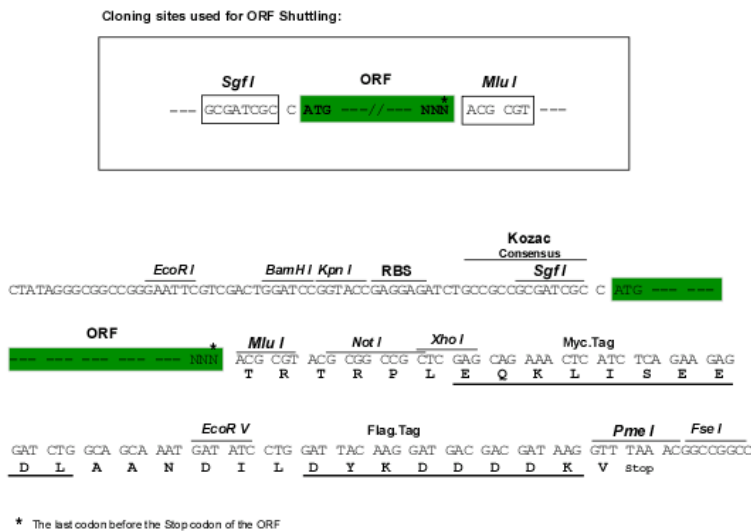
MTPQSLQLQTLLFLLSLLFLVQGAHGRGHREDFRQCQRNQTHRSSLHYKPTDRLRISIENSEEALTVHAP
 FPAAHPASRSFPDPRGLYHFCLYWNRHAGRLHLLYGKRDFLSDKASSLLCFQHQEESLAQGPPLLATSV
 TSWWSPQNIISLPSAASF TFSFHSPHTAAHNASVDMCELKRDQLLSQFLKHPQKASRRPSAAPASQQLQ
 SLESKLT S VRFMGDMVSFEEDRINATVWKLQPTAGLQDLHIHSRQEEEQSEIMEYSVLLPRTLRFQRTKGR
 SGAEAKRLLLVDFFSQALFQDKNSSHVLGEKVLGIVVQNTKVANLTPVVLTTFQHQLQPKNVTLQCVFWV
 EDPTLSSPGHWSAGCETVRRETQTSFCNHLTYFAVLMVSSVEVDAVHKHYLSLLSYVGCVVSALACLV
 TIAAYLCSRVP LPCRPRDYTIKVHMLLLAVFLDTSFLLSEPVALTGSEAGCRASAI FLHFSLLTCL
 SWMGLEGYNLYRLLVVEVFGTYVPGYLLKLSAMGWGFIFLVTLVALVDVDNYGPIILAVHRTPEGVIYPS
 MCWIRDSLVSYITNLGLFSLVFLFNMA MLATMVVQILRLRPHTQKWSHVL TLLGLSLVLGLPWALIFFSF
 ASGTFQLVVLVLF SIIITSFQGLIFIWYWSMLQARGGPSPLKSNDSARLP ISSGSTSSSRI

TRTRPLEQKLI SEEDLAANDILDYKDDDDKV

Chromatograms: https://cdn.origene.com/chromatograms/mk6156_c08.zip

Restriction Sites: SgfI-MluI

Cloning Scheme:



ACCN: NM_001145771

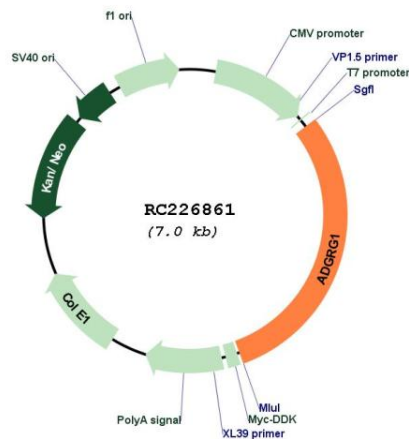
ORF Size: 2079 bp

OTI Disclaimer: The molecular sequence of this clone aligns with the gene accession number as a point of reference only. However, individual transcript sequences of the same gene can differ through naturally occurring variations (e.g. polymorphisms), each with its own valid existence. This clone is substantially in agreement with the reference, but a complete review of all prevailing variants is recommended prior to use. [More info](#)

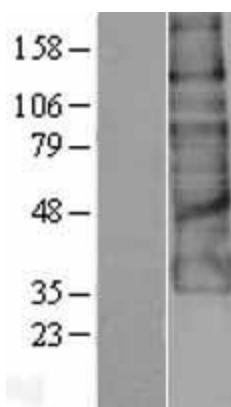
OTI Annotation: This clone was engineered to express the complete ORF with an expression tag. Expression varies depending on the nature of the gene.

Components:	The ORF clone is ion-exchange column purified and shipped in a 2D barcoded Matrix tube containing 10ug of transfection-ready, dried plasmid DNA (reconstitute with 100 ul of water).
Reconstitution Method:	<ol style="list-style-type: none"> 1. Centrifuge at 5,000xg for 5min. 2. Carefully open the tube and add 100ul of sterile water to dissolve the DNA. 3. Close the tube and incubate for 10 minutes at room temperature. 4. Briefly vortex the tube and then do a quick spin (less than 5000xg) to concentrate the liquid at the bottom. 5. Store the suspended plasmid at -20°C. The DNA is stable for at least one year from date of shipping when stored at -20°C.
RefSeq:	<u>NM_001145771.3</u>
RefSeq Size:	4269 bp
RefSeq ORF:	2082 bp
Locus ID:	9289
UniProt ID:	<u>Q9Y653</u>
Cytogenetics:	16q21
Protein Families:	Druggable Genome, GPCR, Transmembrane
MW:	77.7 kDa
Gene Summary:	This gene encodes a member of the G protein-coupled receptor family and regulates brain cortical patterning. The encoded protein binds specifically to transglutaminase 2, a component of tissue and tumor stroma implicated as an inhibitor of tumor progression. Mutations in this gene are associated with a brain malformation known as bilateral frontoparietal polymicrogyria. Alternative splicing results in multiple transcript variants. [provided by RefSeq, Feb 2014]

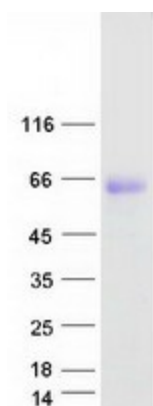
Product images:



Circular map for RC226861



Western blot validation of overexpression lysate (Cat# [LY428998]) using anti-DDK antibody (Cat# [TA50011-100]). Left: Cell lysates from untransfected HEK293T cells; Right: Cell lysates from HEK293T cells transfected with RC226861 using transfection reagent MegaTran 2.0 (Cat# [TT210002]).



Coomassie blue staining of purified ADGRG1 protein (Cat# [TP326861]). The protein was produced from HEK293T cells transfected with ADGRG1 cDNA clone (Cat# RC226861) using MegaTran 2.0 (Cat# [TT210002]).