

Product datasheet for **RC226858**

SPATA2 (NM_001135773) Human Tagged ORF Clone

Product data:

Product Type:	Expression Plasmids
Product Name:	SPATA2 (NM_001135773) Human Tagged ORF Clone
Tag:	Myc-DDK
Symbol:	SPATA2
Synonyms:	PD1; PPP1R145; tamo
Mammalian Cell Selection:	Neomycin
Vector:	pCMV6-Entry (PS100001)
E. coli Selection:	Kanamycin (25 ug/mL)



[View online »](#)

ORF Nucleotide Sequence:

>RC226858 ORF sequence
 Red=Cloning site Blue=ORF Green=Tags(s)

TTTTGTAATACGACTCACTATAGGGCGGCCGGAATTCGTCGACTGGATCCGGTACCGAGGAGATCTGCC
 GCC**CGGATCGCC**

ATGGGGAAGCCAGTTCAATGGATACTAAATCAAGGATGACTTATTTTCGGAAGTACGTGCAGTTCCATG
 AGAGCAAAGTGGATACCACCACCAGCAGGCAGCGCCTGGCAGCGATGAGTGCCTGCGGGTGGCAGCCTC
 AACCTGCTCAGCTGCACAAGGTGGATCCCTTTATCGATTCCGGCTGATCCAGTTCTATGAGGTGGT
 GAGAGCTCCTTGCCTCGCTCAGCTCCTTAGCCTGCGGGCTCTGCACGGCGCCTTCAGCATGCTGGAGA
 CGGTGGGCATCAACCTCTTCTTACCCGTGGAAGAAGGAATTCAGAAGCATCAAGACCTACACGGGCC
 TTTTGTATTATTGTCAAGTCGACATTACTGGAAGAGGACATCCGAGCCATCCTGAGCTGCATGGCTAC
 ACACCTGAGCTGGGCACTGCATAAAGCTCAGAGAGCTCGTGGAGACCCTCCAGGTGAAGATGGTCTCT
 TTGAGCTCTTTCTGGCCAAAGTCGAGTGTGAGCAGATGCTAGAAATCCACTCACAAGTGAAGGACAAGG
 CTACTCCGAGCTGGACATTGTGAGCGAGCGCAAGAGCAGTGCAGAGGATGTGCGCGGCTGCTCGGACGCC
 CTGCGGGCGGGCAGAGGGCCGGGAGCACCTGACGGCCTCCATGTCACGAGTGGCACTCCAGAAGTCGG
 CCAGCGAGCGGGCGGCCAAGGACTACTACAAGCCCCGCTGACCAAGCCCTCGAGGTCAAGTGGATGCCTA
 TGACAGCTACTGGGAGAGCCGGAAGCCACCCCTGAAGGCCTATTGAGTCTTCGGAAGGAGCCTGTGGCA
 ACGGATGTGGGGACGACCTCAAGGATGAGATCATCCGCCATCCCTTCGCTGCTGACCATGGCCAGCT
 CCCCCACGGCAGCCGGATGTGCTTCCACCCGCTCCCCAGCAACGGCCCGCCCTGCTGCGCGGTAC
 CTACTTCCACTCAGGATGACGTGGATCTGTACACAGACTCTGAACCCAGGGCCACCTACCGTGGCAG
 GATGCTCTGCGGCCGGATGTGTGGCTGCTCAGAAACGATGCCACTCCCTTACCACAAGCGCTCGCCCC
 CTGCCAAAGAGTCCGCCCTCTCCAAGTGCCAAAGCTGCGGGCTGTCTGCAGCTCCTCCCTGCCAGCG
 CTGTGACAGCCTGCTCACCTGCTCCAGCTTCAAGCCAGCGCCTTCCCAGCAAGGCCCTCGACTCAT
 GACAGCCTGGCCACGGGCATCTCTGCGGGAGAAGTACCAGGCCAGACTCAGGGCCTCGACCGCTCC
 CGCACCTTCACTCCAATCCAAGCCCTCCACCAGCCACTTCCCGCTGTGGCTTCTGCAACCGCCAGG
 CGCCACCAACACCTGCACCCAGTGTCAAAGTCTCATGTGACGCCTGCCTCAGCGCTTACCATTATGAC
 CCCTGCTACAAAAGAGTGAAGTGCACAAGTTCATGCCCAACAACAGCTGAAGTACAAGTCCACCCAGC
 TCTCCATCTCGGTACAGA

ACGCGTACGCGGCCGCTCGAGCAGAACTCATCTCAGAAGAGGATCTGGCAGCAAATGATATCTGGATT
 ACAAGGATGACGACGATAAGGTTTAA

Protein Sequence:

>RC226858 protein sequence
 Red=Cloning site Green=Tags(s)

MGKPSSMDTKFKDDLFRKYVQFHESKVDTTTSRQRPGSDECLRVAASTLLSLHKVDPFYRFLRIQFYEVV
 ESSLRSLSSSLRALHGAFSMLFETVGINFLYPWKKEFRSIKTYTGPFVYVYKSTLLEEDIRAILSCMGY
 TPELGTAYKLRELVELQVQVMSFELFLAKVECEQMLEIHSQVKDKGYSELDIVSERKSSAEDVRGCSDA
 LRRRAEGREHLTASMSRVALQKSASERAADYKPRVTKPSRSVDAYDSYWESRKPLKASLSLRKEPVA
 TDVGDLDKDEIIRPSPSLLTMASSPHGSPDVLPPASPSNGPALLRGTYFSTQDDVDLYTDEPRATYRRQ
 DALRPDVLRLRNDASHLYHKRSPPAKESALSKQSCGLSCSSSLCQRCDLLTCPASKPSAFPSKASTH
 DSLAHGASLREKYPGQTQGLDRLPHLHLSKSPSTTPTSRCGFCNRPGATNTCTQCSKVSCDACLSAYHYD
 PCYKSELHKFMPNQLNYKSTQLSHLVYR

TRTRPLEQKLISEEDLAANDILDYKDDDDKV

Chromatograms:

https://cdn.origene.com/chromatograms/mk6566_c10.zip

Restriction Sites:

Sgfl-MluI

Cloning Scheme:


ACCN: NM_001135773

ORF Size: 1560 bp

OTI Disclaimer: The molecular sequence of this clone aligns with the gene accession number as a point of reference only. However, individual transcript sequences of the same gene can differ through naturally occurring variations (e.g. polymorphisms), each with its own valid existence. This clone is substantially in agreement with the reference, but a complete review of all prevailing variants is recommended prior to use. [More info](#)

OTI Annotation: This clone was engineered to express the complete ORF with an expression tag. Expression varies depending on the nature of the gene.

Components: The ORF clone is ion-exchange column purified and shipped in a 2D barcoded Matrix tube containing 10ug of transfection-ready, dried plasmid DNA (reconstitute with 100 ul of water).

Reconstitution Method:

1. Centrifuge at 5,000xg for 5min.
2. Carefully open the tube and add 100ul of sterile water to dissolve the DNA.
3. Close the tube and incubate for 10 minutes at room temperature.
4. Briefly vortex the tube and then do a quick spin (less than 5000xg) to concentrate the liquid at the bottom.
5. Store the suspended plasmid at -20°C. The DNA is stable for at least one year from date of shipping when stored at -20°C.

RefSeq: [NM_001135773.1](#), [NP_001129245.1](#)

RefSeq Size: 4156 bp

RefSeq ORF: 1563 bp

Locus ID: 9825

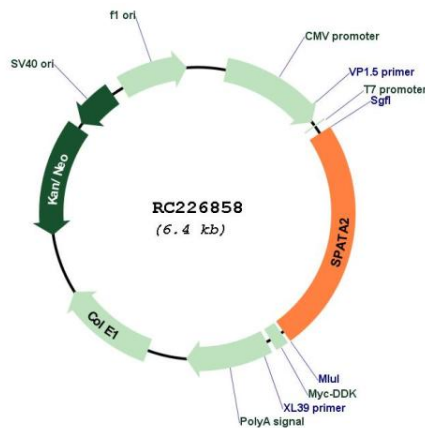
UniProt ID: [Q9UM82](#)

Cytogenetics: 20q13.13

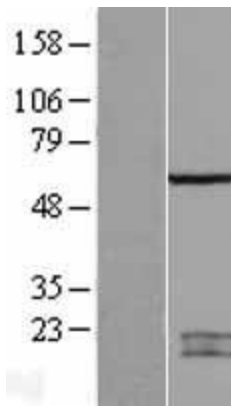
MW: 58.4 kDa

Gene Summary: Bridging factor that mediates the recruitment of CYLD to the LUBAC complex, thereby regulating TNF-alpha-induced necroptosis (PubMed:27307491, PubMed:27458237, PubMed:27545878, PubMed:27591049). Acts as a direct binding intermediate that bridges RNF31/HOIP, the catalytic subunit of the LUBAC complex, and the deubiquitinase (CYLD), thereby recruiting CYLD to the TNF-R1 signaling complex (TNF-RSC) (PubMed:27458237, PubMed:27545878, PubMed:27591049). Required to activate the 'Met-1'- (linear) and 'Lys-63'-linked deubiquitinase activities of CYLD (PubMed:27458237, PubMed:27591049). Controls the kinase activity of RIPK1 and TNF-alpha-induced necroptosis by promoting 'Met-1'-linked deubiquitination of RIPK1 by CYLD (By similarity).[UniProtKB/Swiss-Prot Function]

Product images:



Circular map for RC226858



Western blot validation of overexpression lysate (Cat# [LY427705]) using anti-DDK antibody (Cat# [TA50011-100]). Left: Cell lysates from untransfected HEK293T cells; Right: Cell lysates from HEK293T cells transfected with RC226858 using transfection reagent MegaTran 2.0 (Cat# [TT210002]).