

Product datasheet for **RC226855**

RCOR3 (NM_001136225) Human Tagged ORF Clone

Product data:

Product Type:	Expression Plasmids
Product Name:	RCOR3 (NM_001136225) Human Tagged ORF Clone
Tag:	Myc-DDK
Symbol:	RCOR3
Mammalian Cell Selection:	Neomycin
Vector:	pCMV6-Entry (PS100001)
E. coli Selection:	Kanamycin (25 ug/mL)



[View online »](#)

ORF Nucleotide Sequence:

>RC226855 representing NM_001136225
 Red=Cloning site Blue=ORF Green=Tags(s)

TTTTGTAATACGACTCACTATAGGGCGGCCGGAATTCGTCGACTGGATCCGGTACCGAGGAGATCTGCC
 GCC**CGCATCGCC**

ATGCCCGCATGATGGAGAAAGGGCCGAGTTACTGGGAAGAACCAGATCGGCCAACGGCAGCGCCAAGA
 GCCCGGCAGGCGGCGCGCAGCGCGCCTCGTCCACCAACGGCGGGCTGCACTACTCAGAGCCGAGAG
 CGGCTGCAGCAGCGACGACGACGACGATGTTGGGATGAGAGTCGGAGCCGAATACCAAGCTCGGATCCCT
 GAATTTGATCCAGGTGCTACAAAGTACACAGATAAAGACAATGGAGGGATGCTTGTATGGTCTCCATATC
 ACAGTATCCAGATGCCAAATTGGATGAATACATTGCAATTGCAAAGGAAAAGCATGGCTACAATGTGGA
 ACAGGCACCTTGGCATGTTGTTCTGGCATAAACATAACATTGAGAAGTCCCTTGCTGATCTCCCTAATTTT
 ACTCCCTTTCCGGATGAGTGGACAGTGGAAAGATAAAGTCTATTTGAACAAGCCTTTAGTTTTTCATGGAA
 AGAGCTTTCACAGGATTCAGCAAATGCTTCCAGATAAGACAATTGCAAGCCTTGTAAAATATTACTATTC
 TTGGAAAAAACTCGCTCTAGGACAAGTTTGATGGATCGCCAGGCTCGTAACTAGCTAATAGACATAAT
 CAGGGTGACAGTATGATGATGTAGAAGAAACACATCCAATGGATGGGAATGATAGTGATTATGATCCCA
 AAAAAAGAAGCAAAAAAGAGGGTAATACTGAACAACCTGTCCAACTAGCAAGATTGGACTTGGAAGAAG
 AGAGTATCAGAGTTTACAACATCGCCATCATTCTCAGCGTTCTAAGTGCCGTCCACCTAAGGGCATGTAT
 TTAACCCAGGAAGATGTGGTAGCAGTTTCTGTAGTCCCAATGCAGCCAACACCATCCTGAGGCAACTGG
 ACATGGAGTTGATCTCTCTAAAACGTCAAGTTCAGAATGCTAAGCAAGTAAACAGTGCACCTTAAACAGAA
 AATGGAAGGTGGAATTGAAGAATTCAAACCTCTGAGTCAAATCAGAAAATTAATGCCCGTTGGACCACA
 GAGGAGCAGCTTCTAGCAGTGAAGGTGTCGCAATATGGTAAAGATTTTCAAGCTATTGCAGATGTAA
 TTGGCAACAAGACTGTTGGCCAAGTGAAGAATCTTTGTAACACTACAGGCGTCGGTTTAACTTAGAGGA
 GGTATTGCAGGAGTGGGAAGCAGAACAAGGAACCCAGGCTTCTAATGGTGATGCTTCTACTTTAGGGGAG
 GAGACAAAAAGTCTTCTAATGTGCCATCAGGGAAGAGCACTGATGAAGAAGAGGAGGTGTGTTGTGTA
 TGAATTTGAGCTAATA

ACGCGTACGCGGCCGCTCGAGCAGAACTCATCTCAGAAGAGGATCTGGCAGCAAATGATATCCTGGATT
 ACAAGGATGACGACGATAAGGTTTAA

Protein Sequence:

>RC226855 representing NM_001136225
 Red=Cloning site Green=Tags(s)

MPGMMEKGPELLGKNRSANGSAKSPAGGGGSGASSTNGLHYSEPESEGCSSDDEHDVGMRVGAIEYQARIP
 EFDPGATKYTDKDNMGMLVWSPYHSIPDAKLDEYIAIAKEKHGYNVEQALGMLFWHKHNIKSLADLPNF
 TFPFDEWTVEDKVLFEQAFSFHGKSFHRIQQMLPDKTIAASLVKYYYSWKKTRSRTSLMDRQARKLANRHN
 QGDSDDDVEETHPMDGNDSDYDPKKEAKKEGNTEQPVQTSKIGLRREYQSLQHRHHSQRSKCRPPKGM
 LTQEDVAVVSCSPNAANTILRQLDMELISLKRQVQNAKQVNSALKQKMEGGIEEFKPPESNQKINARWTT
 EEQLLAVQGVRYGKDFQAIADVIGNKTGQVKNFFVNYRRRNFNLEEVLQEWAEQGTQASNGDASTLGE
 ETKSASNVPKSTDEEEVCLMEFELI

TRTRPLEQKLISEEDLAANDILDYKDDDDKV

Chromatograms:

https://cdn.origene.com/chromatograms/mk8060_g05.zip

Restriction Sites:

SgfI-MluI

Cloning Scheme:


ACCN: NM_001136225

ORF Size: 1347 bp

OTI Disclaimer: The molecular sequence of this clone aligns with the gene accession number as a point of reference only. However, individual transcript sequences of the same gene can differ through naturally occurring variations (e.g. polymorphisms), each with its own valid existence. This clone is substantially in agreement with the reference, but a complete review of all prevailing variants is recommended prior to use. [More info](#)

OTI Annotation: This clone was engineered to express the complete ORF with an expression tag. Expression varies depending on the nature of the gene.

Components: The ORF clone is ion-exchange column purified and shipped in a 2D barcoded Matrix tube containing 10ug of transfection-ready, dried plasmid DNA (reconstitute with 100 ul of water).

Reconstitution Method:

1. Centrifuge at 5,000xg for 5min.
2. Carefully open the tube and add 100ul of sterile water to dissolve the DNA.
3. Close the tube and incubate for 10 minutes at room temperature.
4. Briefly vortex the tube and then do a quick spin (less than 5000xg) to concentrate the liquid at the bottom.
5. Store the suspended plasmid at -20°C. The DNA is stable for at least one year from date of shipping when stored at -20°C.

RefSeq: [NM_001136225.2](#)

RefSeq ORF: 1350 bp

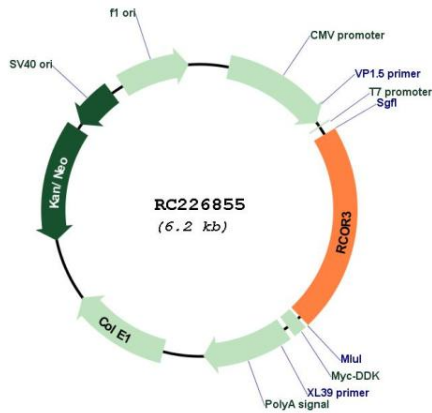
Locus ID: 55758

UniProt ID: [Q9P2K3](#)

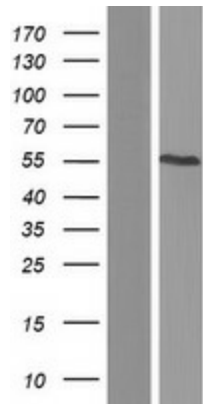
Cytogenetics: 1q32.2-q32.3

Protein Families: Transcription Factors
MW: 50.2 kDa
Gene Summary: May act as a component of a corepressor complex that represses transcription. [UniProtKB/Swiss-Prot Function]

Product images:



Circular map for RC226855



Western blot validation of overexpression lysate (Cat# [LY427862]) using anti-DDK antibody (Cat# [TA50011-100]). Left: Cell lysates from untransfected HEK293T cells; Right: Cell lysates from HEK293T cells transfected with RC226855 using transfection reagent MegaTran 2.0 (Cat# [TT210002]).