

Product datasheet for **RC226852**

DKC1 (NM_001142463) Human Tagged ORF Clone

Product data:

Product Type:	Expression Plasmids
Product Name:	DKC1 (NM_001142463) Human Tagged ORF Clone
Tag:	Myc-DDK
Symbol:	DKC1
Synonyms:	CBF5; DKC; DKCX; NAP57; NOLA4; XAP101
Mammalian Cell Selection:	Neomycin
Vector:	pCMV6-Entry (PS100001)
E. coli Selection:	Kanamycin (25 ug/mL)



[View online »](#)

ORF Nucleotide Sequence:

>RC226852 representing NM_001142463
 Red=Cloning site Blue=ORF Green=Tags(s)

TTTTGTAATACGACTCACTATAGGGCGGCCGGAATTCGTCGACTGGATCCGGTACCGAGGAGATCTGCC
 GCC**CGCATCGCC**

ATGGCGGATGCGGAAGTAATTATTTTCCAAAGAAACATAAGAAGAAAAAGGAGCGGAAGTCATTGCCAG
 AAGAAGATGTAGCCGAAATACAACACGCTGAAGAATTTCTATCAAACCTGAATCCAAGTTGCTAAGTT
 GGACACGTCTCAGTGGCCCTTTTGGCTAAAGAATTTTGATAAGCTGAATGTAAGGACAACACACTATA
 CCTCTTGCATGTGGTTCAAATCTCTGAAGAGAGAGATTGGGGACTATATCAGGACAGGTTTCATTAATC
 TTGACAAGCCCTTAACCCCTCTCCCATGAGGTGGTAGCCTGGATTTCGACGGATACTTCGGGTGGAGAA
 GACAGGGCACAGTGGTACTCTGGATCCCAAGGTGACTGGTTGTTAATCGTGTGCATAGAACGAGCCACT
 CGTTGGTGAAGTCAACACAGAGTGCAGGCAAAGAGTATGTGGGGATTGTCGGGTGCACAATGCTATTG
 AAGGGGGACCCAGCTTTCTAGGGCCCTAGAACTCTGACAGGTGCCTTATTCAGCGACCCCACTTAT
 TGCTGCAGTAAAGAGGCAGCTCCGAGTGAAGACCTACGAGAGCAAAATGATTGAATACGATCCTGAA
 AGAAGATTAGGAATCTTTTGGGTGAGTTGTGAGGCTGGCACCTACATTCCGACATTATGTGTGCACCTTG
 GTTTGTTATTGGGAGTTGGTGGTCAGATGCAGGAGCTTCGGAGGGTTCGTTCTGGAGTCATGAGTAAAA
 GGACCACATGGTGACAATGCATGATGTGCTTGTATGCTCAGTGGCTGTATGATAACCACAAGGATGAGAGT
 TACCTGCGCGGATTTGTTTACCCTTTGGAAAAGCTGTTGACATCTCATAAACGGCTGGTTATGAAAGACA
 GTGCAGTAAATGCCATCTGCTATGGGGCCAAGATTATGCTTCCAGGTGTTCTTCGATATGAGGACGGCAT
 TGAGGTCAATCAGGAGATTGTGGTTATCACCACCAAGGAGAAGCAATCTGCATGGCTATTGCATTAATG
 ACCACAGCGGTCACTCTACCTGCGACCATGGTATAGTAGCCAAGATCAAGAGAGTGATCATGAGAGAG
 ACACTTACCCTCGAAGTGGGTTTAGGTCCAAAGGCAAGTCAGAAGAAGCTGATGATCAAGCAGGGCCT
 TCTGGACAAGCATGGGAAGCCACAGACACACCTGCCACCTGGAAGCAGGATGAGTCTGCCAAAAAAA
 GAGGTGGTTGCTGAAGTGGTAAAAGCCCGCAGGTAGTTGCCGAAGCAGCAAAAAGCTGCGAAGCGGAAGC
 GAGAGAGTGAGAGTGAAGTGAAGTGAAGTGAAGTGAAGTGAAGTGAAGTGAAGTGAAGTGAAGTGAAGT
 GAGTGAAGTGAAGTGAAGTGAAGTGAAGTGAAGTGAAGTGAAGTGAAGTGAAGTGAAGTGAAGTGAAGT
 ACCACCAAGA
 ACCACCAAGA

ACGCGTACGCGGCCGCTCGAGCAGAAACTCATCTCAGAAGAGGATCTGGCAGCAATGATATCCTGGATT
 ACAAGGATGACGACGATAAGGTTTAA

Protein Sequence:

>RC226852 representing NM_001142463
 Red=Cloning site Green=Tags(s)

MADAEVILPKKHKKKKERKSLPEEDVAEIQHAEEFLIKPESKVAKLDTSQWPLLLKNFDKLNVRTTHYT
 PLACGSNPLKREIGDYIRTGFINLDKPSNPSSHEVVAWIRRIILRVEKTGHSGLDPKVTGCLIVCIERAT
 RLVKSQSQSAGKEYVGIIVRLHNAIEGGTQLSRALETLTGALFQRPPLIAAVKRQLRVRTIYESKMIIEYDPE
 RRLGIFWVSCEAGTYIRTLCVHLGLLLGVGGQMQLRRVRSVMSEKDHMVTMHDVLDQWLYDNHKDES
 YLRRFVYPLEKLLTSHKRLVMKDSAVNAICYGAKIMLPGLRYEDGIEVNQEIIVVITTKGEAICMAIALM
 TTAVISTCDHGIIVAKIKRVIMERDTPYPRKWGLPKASQKLMIKQGLLDKHGKPTDSTPATWKQDESARK
 EVVAEVVKAPQVVAEAAKTAKRRESESESEDETPPAAPQLIKKEKKKSKKDKKAKAGLESGAEPGDGSD
 TTKKKKKKKKAKEVELVSE

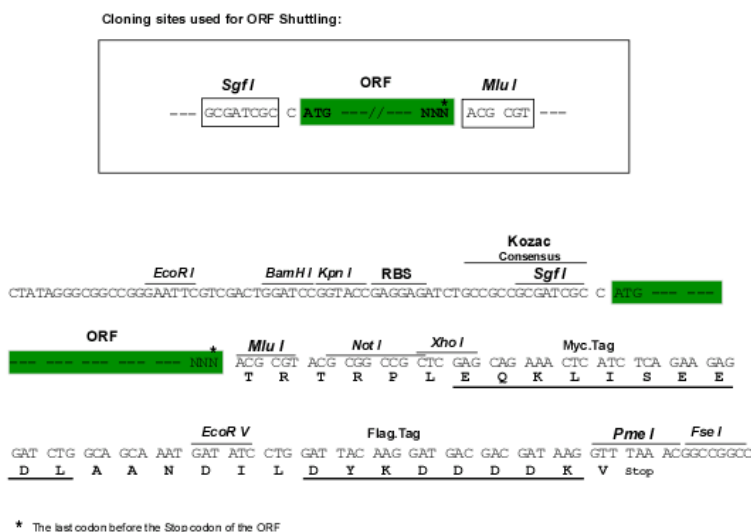
TRTRPLEQKLISEEDLAANDILDYKDDDDKV

Chromatograms:

https://cdn.origene.com/chromatograms/mg4530_g02.zip

Restriction Sites:

Sgfl-Mlul

Cloning Scheme:


ACCN: NM_001142463

ORF Size: 1527 bp

OTI Disclaimer: The molecular sequence of this clone aligns with the gene accession number as a point of reference only. However, individual transcript sequences of the same gene can differ through naturally occurring variations (e.g. polymorphisms), each with its own valid existence. This clone is substantially in agreement with the reference, but a complete review of all prevailing variants is recommended prior to use. [More info](#)

OTI Annotation: This clone was engineered to express the complete ORF with an expression tag. Expression varies depending on the nature of the gene.

Components: The ORF clone is ion-exchange column purified and shipped in a 2D barcoded Matrix tube containing 10ug of transfection-ready, dried plasmid DNA (reconstitute with 100 ul of water).

Reconstitution Method:

1. Centrifuge at 5,000xg for 5min.
2. Carefully open the tube and add 100ul of sterile water to dissolve the DNA.
3. Close the tube and incubate for 10 minutes at room temperature.
4. Briefly vortex the tube and then do a quick spin (less than 5000xg) to concentrate the liquid at the bottom.
5. Store the suspended plasmid at -20°C. The DNA is stable for at least one year from date of shipping when stored at -20°C.

RefSeq: [NM_001142463.3](#)

RefSeq ORF: 1530 bp

Locus ID: 1736

UniProt ID: [O60832](#)

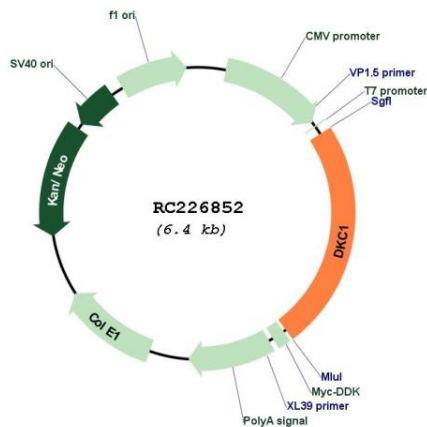
Cytogenetics: Xq28

Protein Families: Druggable Genome

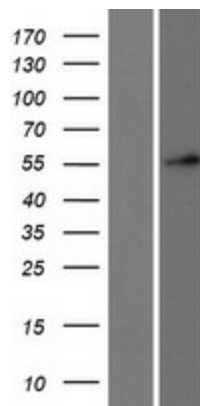
MW: 56.9 kDa

Gene Summary: This gene functions in two distinct complexes. It plays an active role in telomerase stabilization and maintenance, as well as recognition of snoRNAs containing H/ACA sequences which provides stability during biogenesis and assembly into H/ACA small nucleolar RNA ribonucleoproteins (snoRNPs). This gene is highly conserved and widely expressed, and may play additional roles in nucleo-cytoplasmic shuttling, DNA damage response, and cell adhesion. Mutations have been associated with X-linked dyskeratosis congenita. Alternative splicing results in multiple transcript variants. [provided by RefSeq, Jan 2014]

Product images:



Circular map for RC226852



Western blot validation of overexpression lysate (Cat# [LY428109]) using anti-DDK antibody (Cat# [TA50011-100]). Left: Cell lysates from untransfected HEK293T cells; Right: Cell lysates from HEK293T cells transfected with RC226852 using transfection reagent MegaTran 2.0 (Cat# [TT210002]).