

## Product datasheet for **RC226849**

### CLASP1 (NM\_001142274) Human Tagged ORF Clone

#### Product data:

**Product Type:** Expression Plasmids  
**Product Name:** CLASP1 (NM\_001142274) Human Tagged ORF Clone  
**Tag:** Myc-DDK  
**Symbol:** CLASP1  
**Synonyms:** MAST1  
**Vector:** pCMV6-Entry (PS100001)  
**E. coli Selection:** Kanamycin (25 ug/mL)  
**Cell Selection:** Neomycin  
**ORF Nucleotide Sequence:** >RC226849 representing NM\_001142274  
Red=Cloning site Blue=ORF Green=Tags(s)

TTTTGTAATACGACTCACTATAGGGCGCCGGAATTCGTCGACTGGATCCGGTACCGAGGAGATCTGCC  
GCC**CGATCGCC**

ATGGAGCCTCGCATGGAGTCTGCCTGGCGCAGGTGTTGCAGAAGGATGTGGGAAACGATTGCAGTTG  
GCCAAGAAGTATAGACTATTTCTCAGACAAACAGAAGTCTGCTGACCTTGAGCATGACCAGACCATGTT  
AGATAAAGTGTGGATGGACTTGTACCTTTGGGTGAAGTCTAGCAATTACAAGTGGTTCTGCTGGGC  
ATGGACATCCTGTCCGCCCTGGTGACCCGGCTGCAGGATCGGTTCAAGGCGCAGATCGGCACAGTCTGC  
CAAGTCTAATAGACAGACTAGGAGATGCTAAAGACTCTGTGAGGGAGCAGGACCAAACTCTGCTGCTAAA  
GATCATGGATCAAGCTGCTAATCCCAAGTACGATGGGACAGAATGCTTGGAGGCTTCAAACACAAGAAT  
TTCCGTAATCGAGAAGGCATCTGTCTCTGCCTTAGCAACACTCAATGCCTCTGGAGCAGACACTTTAA  
CACTAAGCAAGATTGTGCCACATATATGCAACTTACTTGGAGATCCAAACAGCCAGGTTCCGAGATGCAGC  
AATAAACAGCTTAGTGGAAATTTACAGACATGTAGGAGAACGTGTGAGGGCAGATCTCAGTAAAAAGGA  
TTGCCACAGTCCCGTTGAATGTAATTTTACAAAATTTGATGAAGTCCAGAAATCTGGAACATGATAC  
AATCTGCAAATGATAAAAATTTGACGATGAAGATTCTGTGGATGGTAACAGACCTTCTCTGCTAGTTC  
TACATCATCCAAGCTCCACCAAGTTCTCGGAGAACGTTGGAATGGGAACCCCGCCGCTTGGTTCA  
TCCACCCTGGATCCAAGTCTTCAAGTCTGCAAAAAGAAGGAGCTGGTCTGTTGATGAAGAGGATTTTATTA  
AAGCATTTGATGATGTACCTGTAGTACAGATTTATCCAGCCGAGACCTTGGGAATCCATAAAACAAAAT  
TAGGGAAATATTATCTGATGACAAGCATGATTGGGAGCAGAGAGTAAATGCTCTAAAAAAGATTAGATCT  
TACTTTTGGCTGGTCTGCTGAGTATGATAACTTCTTTCAACATTTGCGTCTTTTGGATGGAGCCTTTA  
AACTCTCTGCTAAGGACCTGCGGTCTCAGGTAGTGCAGGAGGCTTGTATCACGTTGGGCATCTGTCATC  
AGTTCTGGGGAATAAGTTTGACCATGGAGCTGAAGCCATTATGCCAACTATCTTTAATTTAATCCAAAC  
AGTGCCAAAATTATGGCCACATCTGGTGTGTAGCTGTTAGGTTAATTATTCGGCACACACATCCCTA  
GGTTAATACCTGTCATAACAAGCAACTGTACCTTAAGTCTGTCCAGTTAGAAGGCGCTGTTTTGAATT  
TTAGATTTGCTTTTACAAGAATGGCAGACACATTCACCTAGAACGACACATATCAGTATTAGCTGAAACA  
ATAAAGAAGGGAATACATGATGCTGATCCGAAGCAAGAATAGAAGCCAGAAAATGTTACTGGGTTTCC



[View online »](#)

ACAGTCACTTCAGCAGAGAAGCAGAGCACTTGTACCACACCTTGGAGTCCTCCTACCAGAAAGCCCTGCA  
GTCCCACCTGAAGAACTCAGACAGCATAGTGTCTCTGCCTCAGTCAGACCGCTCATCTTCCAGCTCTCAA  
GAGAGTCTAAATCGTCCGCTGTCTGCCAAAAGAAGTCTACTGGAAGTACCACATCTAGAGCTTCTACAG  
TTAGTACCAAATCTGTGTCAACGACTGGTCCCTCCAGCGATCTCGAAGTGATATTGATGTGAACGCAGC  
AGCCAGTGCCAAATCCAAAGTCTCTCATCTTCGGGCACGACGCCTTTCAGCTCTGCAGCAGCTTTGCCT  
CCAGGGTCATACGCATCCTTAGGTGGATCCGCACAAGACGGCAAAGCTCTGGGAGTGCCACCAACGTCG  
CCTCTACACCTGATAACCGGGGCCGAGTCGCGCTAAAGTGGTTTACAGTCCCAGCGATCCAGATCTGC  
TAATCCTGCTGGTGTGGCAGCCGGTCAAGTTCCCCAGGAAAATTGTTGGGAAGTGGTTATGGTGGACTT  
ACTGGGGGCTCCTCACGAGGCCACCTGTGACACCGTCTTTCAGAAAAGCGAAGCAAGATCCCAGGAGCC  
AGGGATGTAGCCGGAAACAAGTCCAAACCGAATAGGATTAGATCGGTTTGGGCTTGGCCAGCCAGGAAG  
AATACCTGGTTCTGTGAATGCCATGAGAGTTCGAGCACAAGTACAGATCTTGAAGCTGTGTTGCTGAT  
GCTTTGCTGTTAGGAGACTCCAGGAGCAAGAAGAAGCCTGTGAGGAGGAGATATGAGCCGTATGGGATGT  
ATTCTGACGATGATGCCAACAGTGTGCCTCAAGTGGTTTGTCTGAGCGCTCATATGGCTCCAGGAATGG  
TGGCATTCCCATATCTGCGGCAGACTGAGGATGTAGCAGAAGTCTCAACCACTGTGCTAGTTCAAAC  
TGGTGAGAAAGGAAAGAAGGGCTTCTGGGCCTGCAGAACTTACTGAAGAGCCAAAGAACACTGAGTCGAG  
TTGAACTGAAAAGGTTGTGTGAGATCTTCACTCGGATGTTTGTGACCCTCATAGCAAGAGAGTTTTTCAG  
TATGTTTTTGGAGACTCTTGTGGATTTTATAATAATTCATAAGGATGATTTACAAGACTGGCTTTTTGTT  
CTTCTCACACAATTACTTAAGAAAATGGGAGCAGATTTACTTGGATCTGTGCAAGCAAAGTTCAAAGG  
CTCTAGATGTCACAAGGGACTCCTTCCATTTGATCAACAATTTAACATTTTGTAGATTTATTGTGGA  
TCAAACCTCAAACCTCAAGGTCAAAGTTGCAATCCTGAAATACATTGAGTCTCTGGCCAGACAG  
ATGGATCCAACAGATTTTGTAACTCTAGTGAGACAAGGCTTGTGTTTCTAGAATCATAACCTGGACAA  
CAGAACCAAAGAGTTTCAACGTCGAGAAAGGCAGCACAGATTGTGCTAATCTCTGTTTGAATTTGAATAC  
TCCTGAAATTTACCATGTTACTTGGTGCCTTGC AAAAACATTCCAGGATGGTCCACCAACTCCTGCAC  
AACCACTCAAGAATTCAGTAACACCAGTGTGGGCTCTCCAAGCAATACGATTGGCCGGACGCCCTCCC  
GACACACCAGCAGCAGGACCAGCCCTGACCTCACCCACCAACTGTTCCCATGGGGTCTGTCTCCAAG  
CATGCTGGACTATGATACAGAGAACCTGAACTCTGAAGAAATCTATAGTTCTCTACGTGGAGTTACAGAA  
GCCATTGAAAAGTTTAGTTTTCGAAGCCAAGAAGATCTGAATGAGCCAATTAACGAGATGGCAAAAAGG  
AGTGTGATATTGTGTCCCGCATGGGGCGCTGCCTCCCCTGCCACTGAGGGCCGGGGGGTGTGAAAGT  
AGAAGGAGGCCGGACAGCTCTGGATAACAAGACCTCACTACTCAACACCCAGCCTCCGCGCGCTTCCCG  
GGGCCCGGGCGGAGACTACAACCCGTACCCCTACTCAGATGCCATCAACACCTACGACAAGACCGCCC  
TGAAAGAGGCTGTGTTGATGACGACATGGAGCAGCTTCGAGACGTGCCATCGACCATTCTGACCTGGT  
GGCTGACCTTCTGAAAGAGCTGTCCAACCAATGAGCGAGTGGAGGAACGGAAGGGAGCCCTGCTGGAG  
CTGCTCAAGATCACGCGGAAGACAGCCTTGGTGTCTGGGAGGAGCACTCAAGACCATTCTGCTCCTGC  
TGCTGGAGACCCTTGGAGACAAAGACCATTCAATTCGAGCACTGGCGTTAAGAGTTTTGAGGGAAATTTCT  
GAGAAATCAACCAGCAAGATTTAAAACTACGCCGAGCTGACGATTATGAAGACTCTGGAAGCCACAAA  
GACTCCCATAAAGGAGTGGTGTGAGAGCGGCTGAGGAGGCTGCGTCCACACTGGCCAGTTCATCCACCCGG  
AGCAGTGCATCAAGGTGCTCTGCCCCATCATCCAGACGGCCGACTACCCATCAACCTTGTGCCATCAA  
GATGCAGACCAAAGTGTGAGAGGATCGCAAAGGAGTCAATGCTGCAGCTCCTTGTGCACATCATCCCA  
GGCTTGTGCAGGGTTATGACAACACCGAAAGTAGTGTGCGTAAGGCCAGCGTGTGTTTGTAGTGGCAA  
TTTATTCCGTAATCGGAGAAGACCTGAAACCTCACCTTGACAGCTCACAGGGAGCAAGATGAAGCTACT  
AAACTTATACATAAAGAGGGCCAGACCACCAACAGCAACAGCAGCTCCTCCTCCGATGTCTCCACGCAC  
AGC

ACGCGTACGCGGCCGCTCGAGCAGAACTCATCTCAGAAGAGGATCTGGCAGCAAATGATATCCTGGATT  
ACAAGGATGACGACGATAAGGTTTAA

Protein Sequence: >RC226849 representing NM\_001142274  
 Red=Cloning site Green=Tags(s)

```
MEPRMESCLAQVLQKDVGKRLQVGQELIDYFSDKQKSADLEHDQTMLDKLVDGLATSWVNSSNYKVLLG
MDILSALVTRLQDRFKAQIGTVLPSLIDRLGDAKDSVREQDQTLKIMDQANPQYVWDRMLGGFKHKN
FRTREGICLCLIATLNASGAQTLTSLKIVPHICNLLGDPNSQVRDAAINSLVEIYRHVGERVRADLSKKG
LPQSRLNVIFTKFDEVQKSGNMIQSANDKNFDEDSVDGNRPSSASSTSSKAPSSRRNVGMGTTTRRLGS
STLGSKSSAAKEGAGAVDEEDFIKAFDDVPVQIYSSRDLEESINKIREILSDDKHDWEQVRNALKKIRS
LLLAGAAEYDNFFQHLRLLDGAFKLSAKDLRSQVVREACITLGHLSVVLGNKFDHGAEAIMPTIFNLIPN
SAKIMATSGVVAVRLIIRHTHIPRLIPVITSNCTSKSVAVRRRCFEFLDLLLQEWQTHSLERHISVLAET
IKKGIHDADSEARIEARKCYWGFHSHFSREAELYHTLESSYQKALQSHLKNSDSIVSLPQSDRSSSSSQ
ESLNRPLSAKRSPTGSTSRASTVSTKSVSTTGSLSQRSRDIDVNAASAKSKVSSSSGTTFFSAAAALP
PGSYASLGRIRTRQSSGSATNVASTPDNRGRSRAKVVSQSQRSRANPAGAGSRSSSPGKLLGSGYGGL
TGGSSRGPPVTPSSEKRSKIPRSQCSRETSNRIGLDRFGLGQPGRIPGSVAMRVLSTSTDLEAAVAD
ALLLGDERSKPPVRRRYEPYGMYSDDANSASSVCSERSYGSRNNGGIPHYLRQTEDVAEVLNHCASSN
WSEKREGLLGLQNLKLSQRTLSRVELKRLCEIFTRMFADPHSKRVFSMFLVDFIIHKKDLQDWLKV
LLTQLLKKMGADLLGSVQAKVQKALDVTRDSFPFDQQFNILMRFIVDQTQTPNLKVKVAILKYIESLARQ
MDPTDFVNSSETRLAVSRIITWTTEPKSSDVRKAAQIVLISL FELNTEPEFTMLL GALPKTFQDGATKLLH
NHLKNSNTSVGSPSNTIGRTPSRHTSSRTSPLTSPNTCSHGGLSPSMLDYDTENLNSEEIYSSLRGVT
AIEKFSFRSQEDLNEPIKRDGKKECDIVSRDGGAAASPA TEGRGGSEVEGGRTALDNKTSLLNTQPPRAF
GPRARDYNPPYSDAINTYDKTALKEAVFDDMEQLRDVPIDHSDLVADLLKELSNHNERVEERKGALE
LLKITREDSLVGWEHFKTI LLLLLLETLGDKDHSIRALALRVLREILRNQPARFKNYAELTIMKTLEAHK
DSHKEVVRAAEAAASTLASSIHPEQCIKVLCP IIQTADYPINLAAIKMQTKVVERIAKESLLQLLVDIIP
GLLQGYDNTSSVRKASVFCLVAIYSVIGEDLKPHLAQLTGSKMKLLNLYIKRAQTTNSNSSSSSDVSTH
S
```

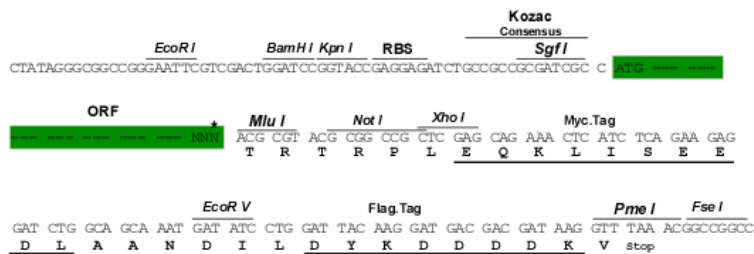
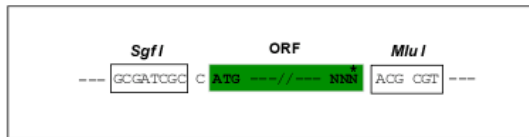
TRTRPLEQKLISEEDLAANDILDYKDDDDKV

Restriction Sites:

Sgfl-MluI

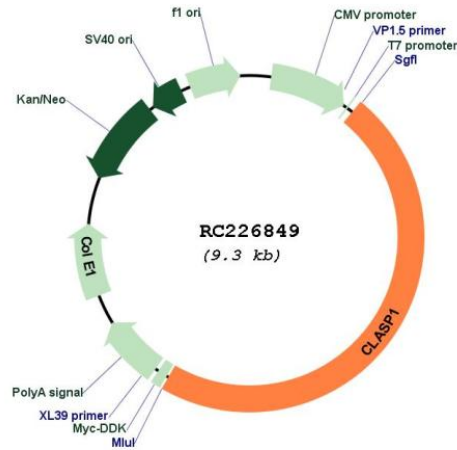
Cloning Scheme:

Cloning sites used for ORF Shuttling:



\* The last codon before the Stop codon of the ORF

## Plasmid Map:



ACCN: NM\_001142274

ORF Size: 4413 bp

OTI Disclaimer: The molecular sequence of this clone aligns with the gene accession number as a point of reference only. However, individual transcript sequences of the same gene can differ through naturally occurring variations (e.g. polymorphisms), each with its own valid existence. This clone is substantially in agreement with the reference, but a complete review of all prevailing variants is recommended prior to use. [More info](#)

OTI Annotation: This clone was engineered to express the complete ORF with an expression tag. Expression varies depending on the nature of the gene.

Components: The ORF clone is ion-exchange column purified and shipped in a 2D barcoded Matrix tube containing 10ug of transfection-ready, dried plasmid DNA (reconstitute with 100 ul of water).

**Reconstitution Method:**

1. Centrifuge at 5,000xg for 5min.
2. Carefully open the tube and add 100ul of sterile water to dissolve the DNA.
3. Close the tube and incubate for 10 minutes at room temperature.
4. Briefly vortex the tube and then do a quick spin (less than 5000xg) to concentrate the liquid at the bottom.
5. Store the suspended plasmid at -20°C. The DNA is stable for at least one year from date of shipping when stored at -20°C.

**RefSeq:** [NM\\_001142274.2](#)

**RefSeq ORF:** 4416 bp

**Locus ID:** 23332

**UniProt ID:** [Q7Z460](#)

**Cytogenetics:** 2q14.2-q14.3

**MW:** 161.9 kDa

**Gene Summary:** CLASPs, such as CLASP1, are nonmotor microtubule-associated proteins that interact with CLIPs (e.g., CLIP170; MIM 179838). CLASP1 is involved in the regulation of microtubule dynamics at the kinetochore and throughout the spindle (Maiato et al., 2003 [PubMed 12837247]).[supplied by OMIM, Mar 2008]