

Product datasheet for **RC226836**

RAP1GAP (NM_001145657) Human Tagged ORF Clone

Product data:

Product Type:	Expression Plasmids
Product Name:	RAP1GAP (NM_001145657) Human Tagged ORF Clone
Tag:	Myc-DDK
Symbol:	RAP1GAP
Synonyms:	RAP1GA1; RAP1GAP1; RAP1GAPII; RAPGAP
Mammalian Cell Selection:	Neomycin
Vector:	pCMV6-Entry (PS100001)
E. coli Selection:	Kanamycin (25 ug/mL)



[View online »](#)

ORF Nucleotide
Sequence:

>RC226836 representing NM_001145657
Red=Cloning site Blue=ORF Green=Tags(s)

TTTTGTAATACGACTCACTATAGGGCGGCCGGGAATTCGTCGACTGGATCCGGTACCGAGGAGATCTGCC
GCCGCGATCGCC

ATGATTGAGAAGATGCAGGGAAGCAGGATGGATGAACAACGCTGCTCCTCCCGCCGCCCTCAAACACAG
AGGAGGACTACATTCCATACCCGAGCGTGCACGAGGTCTTGGGGGAGAAAGGACCCTTCCCCTCATCCT
GCTGCCCCAGTTTGGGGCTACTGGATTGAGGGCACCAACCACGAAATCACAGCATCCCCGAGACAGAG
CCTACTGCAGTCGCCACAACCAAGGTGAAGCTCGAGTGAACCCACAGCCCGCATCTACCGGAAGCACT
TTCTCGGCAAGGAGCATTCAATTACTACTCACTGGACGCTGCCCTCGGCCACCTTGCTTCTCACTCAA
GTACGATGTCATCGGGACCAAGAGCACCTGCGGCTGCTGCTCAGGACCAAGTCCCGGACATACCATGAT
GTCATCCCATCTCCTGCCTCACCGAGTCCCTAATGTTGTCCAGATGGCAAAGTTGGTGTGTGAAGACG
TCAATGTGGATCGTTCTATCCTGTGCTCTACCCAAGGCTTCCGGCTCATCGTCACTTTGACGAGCA
TGTCATCAGCAATAACTCAAGTTTGGCGTCATTTATCAGAAGCTTGGGACAGCTCCGAGGAAGAAGTCT
TTCAGCACAATGAGGAAAGTCCCGCTTTCGTGGAGTTCCCTTGAATTTCTTGGCCAGAAGGTCAAAGTGC
AGGACTTTAAGGGTTCCGAGGAGGCTGGACGTGACCCACGGGACAGCGGGGACCGAATCTGTGTACTG
CAACTTCCGCAACAAGGAGATCATGTTTACGTTGCCACCAAGCTGCCATACACGGAAGGGGACGCCAG
CAGTTGCAGCGGAAGCGGCACATCGGGAACGACATCGTGGCTGTGGTCTTCCAGGATGAGAACACTCCTT
TCGTGCCCGACATGATCGCGTCCAATTCCTGCATGCCTACGTCGTGGTGACGGCTGAGGGCGGGGGCC
TGATGGCCCCCTCTACAAGGTCTCTGTCACTGCAAGAGATGATGTGCCCTTCTTGGACCCCCCTCCCG
GACCCCGCTGTGTTGAGGAAGGGGCTGAGTTCAGGAATTTTGGTGCAGAAAGTGCATCAATGCTGAAT
ATGCCTGCTACAAGGCAGAGAAGTTTGCACAACTGGAGGAGCGGACCGGGCCGCCCTCCTGGAGACGCT
CTATGAGGAACTACACATCCACAGCCAGTCCATGATGGGCTTGGGCGGCGACGAGGACAAGATGGAGAAT
GGCAGTGGGGGCGGCGGCTTCTTTGAGTCTTCAAGCGGTCATCCGGAGCCGCAGCCAGTCCATGGATG
CCATGGGGCTGAGCAACAAGAAGCCCAACACCGTGTCCACCAGCCACAGCGGGAGCTTCGCGCCCAACA
CCCCGACCTGGCCAAGGCGGCTGGAATATCATTGCTTATTCTGGGAAAAGTGCAGTAGATTGGGACGC
CGGGGCGTGCATAGGCATAGGAACCGTGAAGAGTCACTGATTGTCCCTGGGAAGAGCCCCACGAGGA
AGAAGTCGGGCGGTTCCGGTCCCGCCGACGAGCCATTGGCATCGAGAACATACAGGAGGTGCAGGA
GAAGAGGGAGAGCCCTCCGGTGGTCCAGAACCCAGACAGCGGGCACGTCTCACAGGAGCCCAAGTCCG
GAGAACTCATCCACTCAGAGCTCCCAGAGATGCCACGACCAAGAACAGAGCGGAGACCGCAGCGCAGA
GAGCAGAGGCGCTCAAGGACTTCTCCCGCTCCTCGTCCAGTGCCAGCAGCTTCGCCAGCGTGGTGGAGGA
GACGGAGGGTGTGGACGGAGAGGACACAGGCTGGAGAGCGTGTATCCTCAGGAACACCCCAAGCGG
GACTCCTTATCTATAGCACGTGGTGGAGGACAGTGTGACGACCACTAGTGGGGGAGCTCCCCAGACG
CCGGCAAGTTGGGGGACCTGCGTGTCCCGAGATCAAGATCCAGCTGGAAGCATCTGAGCAGCACATGCC
CCAGCTGGGCTGT

ACGCGTACGCGGCGGCTCGAGCAGAACTCATCTCAGAAGAGGATCTGGCAGCAAATGATATCCTGGATT
ACAAGGATGACGACGATAAAGTTTAA

Protein Sequence: >RC226836 representing NM_001145657
Red=Cloning site Green=Tags(s)

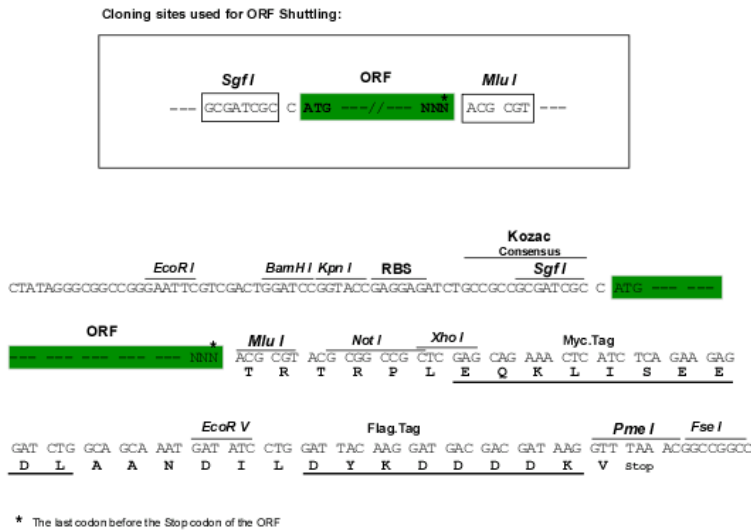
MIEKMQGSRMDEQRCSPFPPLKTEEDYIPYPSVHEVLGREGPFPLILLPQFGGYWIEGTNHEITSIPETE
 PLQSPPTTKVKLECNPTARIYRKHFLGKEHFNYYSLDAALGHLVFSKLYDVIQDQEHRLRLLRKCRITYHD
 VIPISCLTEFPNVVQMAKLVCEDEVNDRFYVLYPKASRLIVTFDEHVISNNFKFVYIYQKLGQTSEEEL
 FSTNEESPAFVEFLEFLGQKVKLQDFKGFRRGLDVTHGQTGTESVYCNFRNKEIMFHVSTKLPYTEGDAQ
 QLQRKRHIGNDIVAVVFQDENTPFVPMIASNFLHAYVVVQAEGGPDGPLYKVSVTARDDVPPFGPPLP
 DPAVFRKGPEFQEFLLTKLINAAYACYKAEKFAKLEERTRAALLETLYEELHIHSQSMGLGGDEDKMEN
 GSGGGGFESFKRVIRSRSQSMAMGLSNKKPNTVSTSHSGSFAPNPDLAKAAGISLLIPGKSASRFGR
 RGAISIGITVEESLIVPGKSPTRKKSQPFGRSSAIGIENIQEVQEKRESPPAGQKTPDSGHVSQEPKS
 ENSSTQSSPEMPTTKNRAETAQAQRAEALKDFSRSSSSASSFASVVEETEGVDGEDTGLESVSSSGTPHKK
 DSFIYSTWLEDSVSTSSGSSPDAGKLGDPACPEIKIQLEASEQHMPQLGC

TRTRPLEQKLISEEDLANDILDYKDDDDKV

Chromatograms: https://cdn.origene.com/chromatograms/mk8072_f11.zip

Restriction Sites: SgfI-MluI

Cloning Scheme:



ACCN: NM_001145657

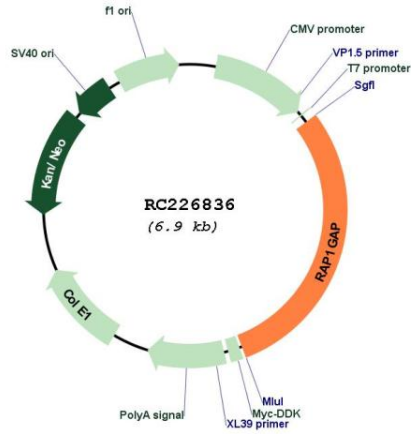
ORF Size: 2043 bp

OTI Disclaimer: The molecular sequence of this clone aligns with the gene accession number as a point of reference only. However, individual transcript sequences of the same gene can differ through naturally occurring variations (e.g. polymorphisms), each with its own valid existence. This clone is substantially in agreement with the reference, but a complete review of all prevailing variants is recommended prior to use. [More info](#)

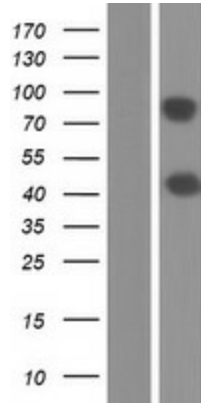
OTI Annotation: This clone was engineered to express the complete ORF with an expression tag. Expression varies depending on the nature of the gene.

Components:	The ORF clone is ion-exchange column purified and shipped in a 2D barcoded Matrix tube containing 10ug of transfection-ready, dried plasmid DNA (reconstitute with 100 ul of water).
Reconstitution Method:	<ol style="list-style-type: none">1. Centrifuge at 5,000xg for 5min.2. Carefully open the tube and add 100ul of sterile water to dissolve the DNA.3. Close the tube and incubate for 10 minutes at room temperature.4. Briefly vortex the tube and then do a quick spin (less than 5000xg) to concentrate the liquid at the bottom.5. Store the suspended plasmid at -20°C. The DNA is stable for at least one year from date of shipping when stored at -20°C.
RefSeq:	<u>NM_001145657.3</u>
RefSeq ORF:	2046 bp
Locus ID:	5909
UniProt ID:	<u>P47736</u>
Cytogenetics:	1p36.12
MW:	75 kDa
Gene Summary:	<p>This gene encodes a type of GTPase-activating-protein (GAP) that down-regulates the activity of the ras-related RAP1 protein. RAP1 acts as a molecular switch by cycling between an inactive GDP-bound form and an active GTP-bound form. The product of this gene, RAP1GAP, promotes the hydrolysis of bound GTP and hence returns RAP1 to the inactive state whereas other proteins, guanine nucleotide exchange factors (GEFs), act as RAP1 activators by facilitating the conversion of RAP1 from the GDP- to the GTP-bound form. In general, ras subfamily proteins, such as RAP1, play key roles in receptor-linked signaling pathways that control cell growth and differentiation. RAP1 plays a role in diverse processes such as cell proliferation, adhesion, differentiation, and embryogenesis. Alternative splicing results in multiple transcript variants encoding distinct proteins. [provided by RefSeq, Aug 2011]</p>

Product images:



Circular map for RC226836



Western blot validation of overexpression lysate (Cat# [LY428957]) using anti-DDK antibody (Cat# [TA50011-100]). Left: Cell lysates from untransfected HEK293T cells; Right: Cell lysates from HEK293T cells transfected with RC226836 using transfection reagent MegaTran 2.0 (Cat# [TT210002]).