

## Product datasheet for **RC226834**

### CCDC113 (NM\_001142302) Human Tagged ORF Clone

#### Product data:

Product Type:	Expression Plasmids
Product Name:	CCDC113 (NM_001142302) Human Tagged ORF Clone
Tag:	Myc-DDK
Symbol:	CCDC113
Synonyms:	HSPC065
Mammalian Cell Selection:	Neomycin
Vector:	pCMV6-Entry (PS100001)
E. coli Selection:	Kanamycin (25 ug/mL)
ORF Nucleotide Sequence:	>RC226834 representing NM_001142302 Red=Cloning site Blue=ORF Green=Tags(s)

TTTTGTAATACGACTCACTATAGGGCGGCCGGAATTCGTCGACTGGATCCGGTACCGAGGAGATCTGCC  
GCC**CGATCGCC**

ATGACTGATGATGAGTCCGAGAGCGTCCTCTCCGACTCCCATGAAGGGTCGGAGCTGGAGCTGCCTGTTA  
TCCAGCTGTGCGGGCTGGTGGAGGAGCTCAGCTATGTAACTCTGCTCTCAAACCTGAGACTGAGATGTT  
TGAGAAATATTACGCTAACTGGAGCCCAGGGATCAGCGACCTCCACGATTATCAGAAATTTAAATATCA  
GCAGCAGATTATGCACAGGCGATCATTGAGGAGGCTGAAATTCGATGGAGTGAAGTTTCGAGAGAAGTGC  
ATGAGTTTGAAAAGATATTCTAAAAGCCATATCCAAGAAGAAAGGGAGTATTTGGCCACTCAGAAAGT  
GATGAAATACATTGAGGACATGAACCGCCGAGGGATAATATGAAGGAGAAATTACGTTTGAAAATGTT  
TCTCTCAAAGTTCAGAGGAAAAAATGCTTTTACAATTGAGGCAGAAGGAAGAGGTGAGTGAAGCCCTTC  
ACGATGTTGATTTTCAGCAGTTGAAGATAGAGAACGCTCAATTTCTTGAGACAATTGAAGCAAGGAATCA  
AGAAGTGAACCCAGCTAAAGCTGTCATCTGGAAACACTCTGAGGTTCTCAATGCCTACAAAAGCAAGCTT  
CACAAGGCAATGGAAATATACCTCAATCTGGACAAGGAGATCTTGCTGAGAAAAGAGCTACTTGAAAAA  
TTGAAAAGAAACACTACAAGTAGAGGAGGACCGGGCCAAAGCCGAGGCAGTGAATAAGAGGCTCCGGAA  
GCAGCTGGCCGAGTTCGGGCACCACAGGTGATGACTTACGTCGGGAGAAGATCTTAAATGCGGACCTG  
GAGAAGAGCATCAGGATGTGGAAAGGAAAGTGGAGATAGCAGAGATGTCCTTAAAAGGCCATCGTAAGG  
CTTGGAATCGAATGAAAATAACCAATGAGCAGTTGCAGGCAGATTACCTTGTCTGGGAAG

**ACGCGT**ACGCGGCCGCTCGAGCAGAAACTCATCTCAGAAGAGGATCTGGCAGCAATGATATCCTGGATT  
ACAAGGATGACGACGATAAGGTTTAA



[View online »](#)

**Protein Sequence:** >RC226834 representing NM\_001142302  
Red=Cloning site Green=Tags(s)

MTDDESESVLSDSHEGSELELPVIQLCGLVEELSYVNSALKTETEMFEKYYAKLEPRDQRPPLSEIKIS  
 AADYAQAIIEEAEIRWSEVSREVHEFEKDILKAI SKKKSILATQKVMKYIEDMNRDRNMKEKLR LKNV  
 SLKVQRKKMLLQLRQKEEVSEALHDVDFQQLKIENAQFLETIEARNQELTQLKLSGNTLQV LNAYKSKL  
 HKAMEIYLNLDKEILLRKELLEKIEKETLQVEEDRAKAEAVNKRLRKQLAEFRAPQVMTYVREKILNADL  
 EKSIRMWERKVEIAEMSLKGRKAWNRMKITNEQLQADYLAGK

TRTRPLEQKLISEEDLAANDILDYKDDDDKV

**Chromatograms:** [https://cdn.origene.com/chromatograms/mk8052\\_b08.zip](https://cdn.origene.com/chromatograms/mk8052_b08.zip)

**Restriction Sites:** SgfI-MluI

**Cloning Scheme:**



**ACCN:** NM\_001142302

**ORF Size:** 969 bp

**OTI Disclaimer:** The molecular sequence of this clone aligns with the gene accession number as a point of reference only. However, individual transcript sequences of the same gene can differ through naturally occurring variations (e.g. polymorphisms), each with its own valid existence. This clone is substantially in agreement with the reference, but a complete review of all prevailing variants is recommended prior to use. [More info](#)

**OTI Annotation:** This clone was engineered to express the complete ORF with an expression tag. Expression varies depending on the nature of the gene.

**Components:** The ORF clone is ion-exchange column purified and shipped in a 2D barcoded Matrix tube containing 10ug of transfection-ready, dried plasmid DNA (reconstitute with 100 ul of water).

**Reconstitution Method:**

1. Centrifuge at 5,000xg for 5min.
2. Carefully open the tube and add 100ul of sterile water to dissolve the DNA.
3. Close the tube and incubate for 10 minutes at room temperature.
4. Briefly vortex the tube and then do a quick spin (less than 5000xg) to concentrate the liquid at the bottom.
5. Store the suspended plasmid at -20°C. The DNA is stable for at least one year from date of shipping when stored at -20°C.

**RefSeq:** [NM\\_001142302.1](#), [NP\\_001135774.1](#)

**RefSeq ORF:** 972 bp

**Locus ID:** 29070

**UniProt ID:** [Q9H0I3](#)

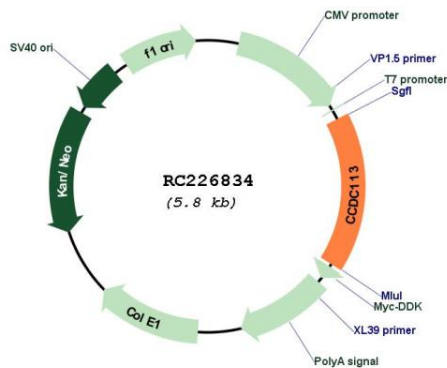
**Cytogenetics:** 16q21

**Protein Families:** Druggable Genome

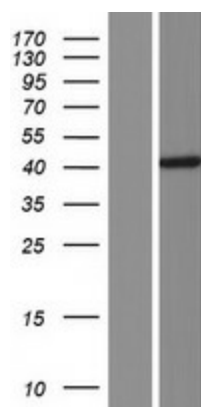
**MW:** 37.7 kDa

**Gene Summary:** Component of centriolar satellites contributing to primary cilium formation.[UniProtKB/Swiss-Prot Function]

**Product images:**



Circular map for RC226834



Western blot validation of overexpression lysate (Cat# [LY428024]) using anti-DDK antibody (Cat# [TA50011-100]). Left: Cell lysates from untransfected HEK293T cells; Right: Cell lysates from HEK293T cells transfected with RC226834 using transfection reagent MegaTran 2.0 (Cat# [TT210002]).