

## Product datasheet for **RC226828**

### **TMEM51 (NM\_001136217) Human Tagged ORF Clone**

#### Product data:

**Product Type:** Expression Plasmids  
**Product Name:** TMEM51 (NM\_001136217) Human Tagged ORF Clone  
**Tag:** Myc-DDK  
**Symbol:** TMEM51  
**Synonyms:** C1orf72  
**Mammalian Cell Selection:** Neomycin  
**Vector:** pCMV6-Entry (PS100001)  
**E. coli Selection:** Kanamycin (25 ug/mL)  
**ORF Nucleotide Sequence:** >RC226828 representing NM\_001136217  
**Red=Cloning site Blue=ORF Green=Tags(s)**

TTTTGTAATACGACTCACTATAGGGCGGCCGGAATTCGTCGACTGGATCCGGTACCGAGGAGATCTGCC  
GCC**CGATCGCC**

ATGATGGCCAGTCCAAGGCCAATGGCTCGCACTATGCGCTGACCGCCATCGGCCTGGGGATGCTGGTCC  
TTGGGGTGATCATGGCCATGTGGAACCTGGTACCGGCTTCAGCGCGGCCGAGAAGCCAACAGCTCAGGG  
CAGCAACAAGACCGAGGTGGTGGCGGCATCCTCAAGAGCAAGACCTTCTGTGGCCTACGTGCTGGTCC  
GGGGCCGGGTGATGCTGCTGCTTTCTATCTGCCTGAGTATCAGGGATAAGAGGAAGCAGCGGCAGG  
GCGAGGACCTGGCCATGTCCAGCACCCGACAGGCGCTGGGCCTCACGCCAGGAGGAAGACAGCCAGGA  
GGAAGAAGAGGAGGATGAGGAGGCTGCCTCAAGTACTATGTTCCAGCTACGAGGAAGTATGAACACA  
AACTACTCAGAAGCAAGGGGAGAGGAGCAGAACCCGAGGTTGAGCATCTCTCTCCCGTCCATGAGTCAC  
TGACGGGGCTCGACGAGACCACCCACATCCACCAGGGCTGACGTGGAGGCCAGCCCTGGGAACCCCC  
TGACAGGCAGAACTCTAAGTTGGCCAAACGACTGAAACCGCTGAAAGTTCGAAGGATTAATCTGAAAAG  
CTTACCCTCAAAGACTTTAGGATCAACCTCCAGACAAAACGTCCTCCTCCCTCGATAGAGCCTTTGA  
CTCCTCCACCGCAGTATGATGAAGTCCAGGAGAAGGCCCCGACACCCGGCCGCCGAC

**ACGCGT**ACGCGGCCGCTCGAGCAGAACTCATCTCAGAAGAGGATCTGGCAGCAAATGATATCCTGGATT  
ACAAGGATGACGACGATAAGGTTTAA



[View online »](#)

**Protein Sequence:** >RC226828 representing NM\_001136217  
Red=Cloning site Green=Tags(s)

MMAQSKANGSHYALTAIGLGMLVLGVIMAMWNLVPGFSAAEKPTAQGSNKTEVGGGILKSKTF SVAYVLV  
 GAGVMLLLL SICLSIRDKRKQRQGEDLAHVQHPTGAGPHAQEEDSQEEEEDEEAASRYYYVPSYEEVMNT  
 NYSEARGEEQNPRLSISLPSYESLTGLDETTPTSTRADVEASPGNPPDRQNSKLAKRLKPLKVRRIKSEK  
 LHLKDFRINLPDKNVPPPSIEPLTPPPQYDEVQEKAPDTRPPD

TRTRPLEQKLISEEDLAANDILDYKDDDDKV

**Chromatograms:** [https://cdn.origene.com/chromatograms/mk8075\\_b10.zip](https://cdn.origene.com/chromatograms/mk8075_b10.zip)

**Restriction Sites:** SgfI-MluI

**Cloning Scheme:**

Cloning sites used for ORF Shuttling:



\* The last codon before the Stop codon of the ORF

**ACCN:** NM\_001136217

**ORF Size:** 759 bp

**OTI Disclaimer:** The molecular sequence of this clone aligns with the gene accession number as a point of reference only. However, individual transcript sequences of the same gene can differ through naturally occurring variations (e.g. polymorphisms), each with its own valid existence. This clone is substantially in agreement with the reference, but a complete review of all prevailing variants is recommended prior to use. [More info](#)

**OTI Annotation:** This clone was engineered to express the complete ORF with an expression tag. Expression varies depending on the nature of the gene.

**Components:** The ORF clone is ion-exchange column purified and shipped in a 2D barcoded Matrix tube containing 10ug of transfection-ready, dried plasmid DNA (reconstitute with 100 ul of water).

**Reconstitution Method:**

1. Centrifuge at 5,000xg for 5min.
2. Carefully open the tube and add 100ul of sterile water to dissolve the DNA.
3. Close the tube and incubate for 10 minutes at room temperature.
4. Briefly vortex the tube and then do a quick spin (less than 5000xg) to concentrate the liquid at the bottom.
5. Store the suspended plasmid at -20°C. The DNA is stable for at least one year from date of shipping when stored at -20°C.

**RefSeq:** [NM\\_001136217.1](#), [NP\\_001129689.1](#)

**RefSeq Size:** 1958 bp

**RefSeq ORF:** 762 bp

**Locus ID:** 55092

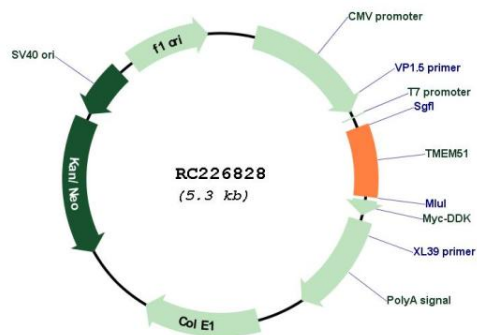
**UniProt ID:** [Q9NW97](#)

**Cytogenetics:** 1p36.21

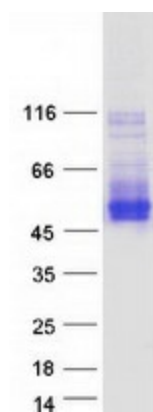
**Protein Families:** Transmembrane

**MW:** 27.8 kDa

### Product images:



Circular map for RC226828



Coomassie blue staining of purified TMEM51 protein (Cat# [TP326828]). The protein was produced from HEK293T cells transfected with TMEM51 cDNA clone (Cat# RC226828) using MegaTran 2.0 (Cat# [TT210002]).