

Product datasheet for RC226821

RESP18 (NM_001007089) Human Tagged ORF Clone

Product data:

Product Type: Expression Plasmids
 Product Name: RESP18 (NM_001007089) Human Tagged ORF Clone
 Tag: Myc-DDK
 Symbol: RESP18
 Mammalian Cell Selection: Neomycin
 Vector: pCMV6-Entry (PS100001)
 E. coli Selection: Kanamycin (25 ug/mL)
 ORF Nucleotide Sequence: >RC226821 representing NM_001007089
 Red=Cloning site Blue=ORF Green=Tags(s)

TTTTGTAATACGACTCACTATAGGGCGGCCGGAATTCGTCGACTGGATCCGGTACCGAGGAGATCTGCC
 GCC**CGATCGCC**

ATGGCAGTGGATGTGGAATTCGGAGTCGCGGGCTGGTGGGAAGCTGCAGCCCGCTCAGCCCTCGGCCG
 TGGCCGCTACCTCACTGAGACTTGGCCGGGAGTGAGCGCGCCGAGCCTGGGAGGATACAGCACCCACT
 GTGGCTGGGAGCTCCGAGGGGCTCCAGCTGCTTGCTGCTTCTGCTGCTGAACAGCTGCCCGGGGGC
 TGCAGCGACACTAGTCCCACGATGGTCAGGACCAAGTAGGAGTGGGGCAGCTTTGGCCCTCCAAGGAT
 TTGCCACCCAGTCTTCCAGCATTTACAGTTGTGCTCCAGCAGATTATACCCCAAGGTCTGTTCTGGAA
 GGATGACATCACCCAGGATGCAATGATCCAAAAGATGGAGCATGCCAGCAGACTGCATCCCCAAGAACCA
 TGCTGAAGGATGGGAAGGCACCTTTCCCACTAAAACCACTGAGAGCCCTGGCCAAGGTGAACAGGG
 ATCAGTGCTTTACCTCCGAAGTGGTTTCTAAGGCCCTGAAACAAGAGGTGGCCAACCCTGTCAAGATTAC
 CTATAGGTGTTTCATATGGGGGGCTGGACATGATGCAGGCGCCGGGACCCTCTAAGGAAGAAATTATCTAT
 AAGATCATGCGGCTTCTCTGGGCCACTTCTACTGTGGGCGCAACCCTGTGGC

ACGCGTACGCGGCCGCTCGAGCAGAACTCATCTCAGAAGAGGATCTGGCAGCAATGATATCTGGATT
 ACAAGGATGACGACGATAAGGTTTAA

Protein Sequence: >RC226821 representing NM_001007089
 Red=Cloning site Green=Tags(s)

MAVDVEFGVAGWWEAAAPLSPSAVAATFTETWPGSERAEPGRIQHPLWPGSSEGLQLLVCFLLLNPCPGG
 CSDTSAHDGQDQVGVGQLWPLQGFATPVFQHLQVVLQQIIPQGLFWKDDITQDAMIQKMEHASRLHPQEP
 CLKDGGKALFPTKTTESPLAKVNRDQCFTSEVVSKALKQEVANPVKITRYCSYGLDMMQAPGPSKEEIIY
 KIMRLLWATSYCGPQPCG

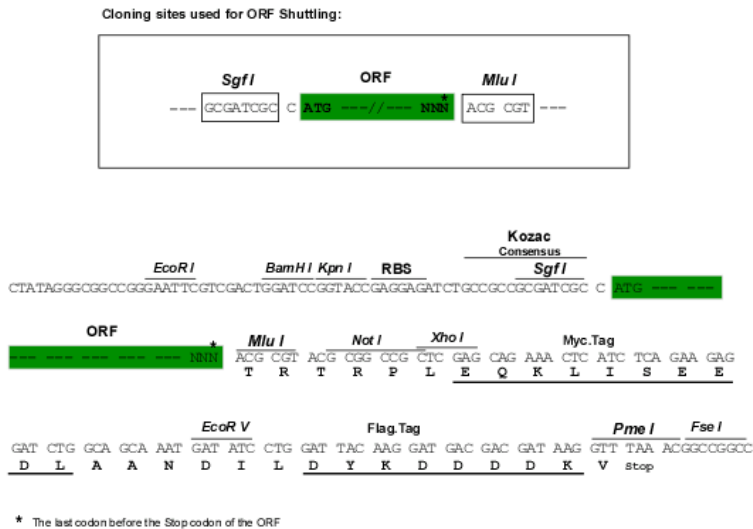
TRTRPLEQKLISEEDLAANDILDYKDDDDKV



Chromatograms: https://cdn.origene.com/chromatograms/ja1259_e02.zip

Restriction Sites: SgfI-MluI

Cloning Scheme:



ACCN: NM_001007089

ORF Size: 684 bp

OTI Disclaimer: The molecular sequence of this clone aligns with the gene accession number as a point of reference only. However, individual transcript sequences of the same gene can differ through naturally occurring variations (e.g. polymorphisms), each with its own valid existence. This clone is substantially in agreement with the reference, but a complete review of all prevailing variants is recommended prior to use. [More info](#)

OTI Annotation: This clone was engineered to express the complete ORF with an expression tag. Expression varies depending on the nature of the gene.

Components: The ORF clone is ion-exchange column purified and shipped in a 2D barcoded Matrix tube containing 10ug of transfection-ready, dried plasmid DNA (reconstitute with 100 ul of water).

Reconstitution Method:

1. Centrifuge at 5,000xg for 5min.
2. Carefully open the tube and add 100ul of sterile water to dissolve the DNA.
3. Close the tube and incubate for 10 minutes at room temperature.
4. Briefly vortex the tube and then do a quick spin (less than 5000xg) to concentrate the liquid at the bottom.
5. Store the suspended plasmid at -20°C. The DNA is stable for at least one year from date of shipping when stored at -20°C.

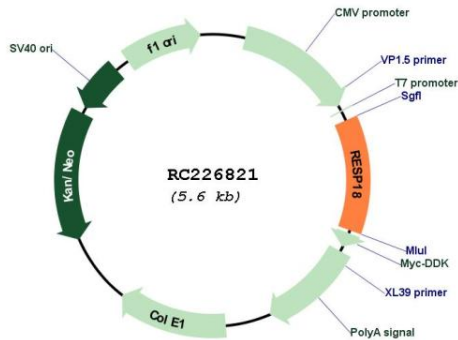
Note: Plasmids are not sterile. For experiments where strict sterility is required, filtration with 0.22um filter is required.

RefSeq: [NM_001007089.4](#)

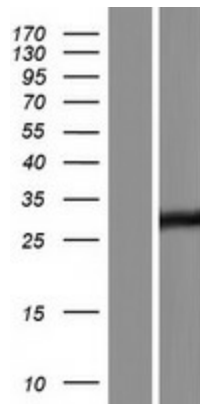
RefSeq ORF: 687 bp

Locus ID: 389075
UniProt ID: [Q5W5W9](#)
Cytogenetics: 2q35
MW: 24.8 kDa
Gene Summary: May play an important regulatory role in corticotrophs.[UniProtKB/Swiss-Prot Function]

Product images:



Circular map for RC226821



Western blot validation of overexpression lysate (Cat# [LY425204]) using anti-DDK antibody (Cat# [TA50011-100]). Left: Cell lysates from untransfected HEK293T cells; Right: Cell lysates from HEK293T cells transfected with RC226821 using transfection reagent MegaTran 2.0 (Cat# [TT210002]).