

Product datasheet for **RC226816**

CRF1 (CRHR1) (NM_001145146) Human Tagged ORF Clone

Product data:

Product Type:	Expression Plasmids
Product Name:	CRF1 (CRHR1) (NM_001145146) Human Tagged ORF Clone
Tag:	Myc-DDK
Symbol:	CRF1
Synonyms:	CRF-R; CRF-R-1; CRF-R1; CRF1; CRFR-1; CRFR1; CRH-R-1; CRH-R1; CRHR; CRHR1L
Mammalian Cell Selection:	Neomycin
Vector:	pCMV6-Entry (PS100001)
E. coli Selection:	Kanamycin (25 ug/mL)



[View online »](#)

ORF Nucleotide Sequence:

>RC226816 representing NM_001145146
 Red=Cloning site Blue=ORF Green=Tags(s)

TTTTGTAATACGACTCACTATAGGGCGGCCGGGAATTCGTCGACTGGATCCGGTACCGAGGAGATCTGCC
 GCC**CGGATCGCC**

ATGGGAGGGCACCCGAGCTCCGTCTCGTCAAGGCCCTTCTCCTTCTGGGGCTGAACCCCGTCTCTGCCT
 CCCTCCAGGACCAGCACTGCGAGAGCCTGTCCCTGGCCAGCAACATCTCAGGACTGCAAGTCAACGCATC
 CGTGGACCTCATTGGCACCTGCTGGCCCCGAGCCCTGCGGGGCAGCTAGTGGTTCGGCCCTGCCCTGCC
 TTTTTCTATGGTGTCCGCTACAATACCACAAACAATGGCTACCGGGAGTGCCTGGCCAATGGCAGCTGGG
 CCGCCCCGCTGAATTACTCCGAGTGCCAGGAGATCCTCAATGAGGAGAAAAAAGCAAGGTGCACTACCA
 TGTGCGAGTCATCACTACCTGGGCCACTGTATCTCCCTGGTGGCCCTCCTGGTGGCCTTTGTCCTC
 TTTCTGCGGCTCAGGCCAGGCTGCACCCATTGGGGTGACCAGGCAGATGGAGCCCTGGAGGTGGGGGCTC
 CATGGAGTGGTGGCCATTTAGGTTTGAAGGAGCATCCGGTGCCTGCGAAACATCATCCACTGGAACCT
 CATCTCCGCCTTCATCCTGCGCAACGCCACCTGGTTTCGTGGTCCAGCTAACCATGAGCCCGAGGTCAC
 CAGAGCAACGTGGGCTGGTGCAGGTTGGTGACAGCCGCCTACAACACTTCCATGTGACCAACTTCTTCT
 GGATGTTGCGCGAGGGCTGCTACCTGCACACAGCCATCGTGTCACTACTCCACTGACCGGCTGCGCAA
 ATGGATGTTTATCTGCATTGGCTGGGGTGTGCCCTTCCCATCATTGTGGCCTGGGCCATTGGGAAGCTG
 TACTACGACAATGAGAAGTGTGGTTTGGCAAAAGGCCTGGGGTGTACACCGACTACATCTACCAGGGCC
 CCATGATCCTGGTCTGTGATCAATTTTCATCTTCTTTTCAACATCGTCCGCATCCTCATGACCAAGCT
 CCGGGCATCCACCAGTCTGAGACCATTAGTACAGGAAGGCTGTGAAAGCCACTCTGGTGTCTGCTGCC
 CTCTGGGCATCACCTACATGCTGTTCTTCGTCAATCCCGGGGAGGATGAGGTCTCCCGGCTCGTCTTCA
 TCTACTTCAACTCCTTCTGGAATCCTTCCAGGGCTTCTTTGTGTCTGTGTTCTACTGTTTCTCAATAG
 TGAGTCCGTTCTGCCATCCGGAAGAGGTGGCACCGGTGGCAGGACAAGCACTCGATCCGTGCCCGAGTG
 GCCCGTGCCATGTCCATCCACCTCCCAACCGGTGTCAGCTTTCACAGCATCAAGCAGTCCACAGCAG
 TC

ACGCGTACGCGGCCGCTCGAGCAGAAACTCATCTCAGAAGAGGATCTGGCAGCAAATGATATCCTGGATT
 ACAAGGATGACGACGATAAGGTTTAA

Protein Sequence:

>RC226816 representing NM_001145146
 Red=Cloning site Green=Tags(s)

MGGHPQLRLVKALLLLGLNPVSASLQDQHCELSLASNISGLQCNASVDLIGTCWPRSPAGQLVVRPCPA
 FFYGVRYNTTNGYRECLANGSWAARVNYSECQEILNEEKSKVHYHVAVIINYLGHCISLVALLVAFVL
 FLRLRPGCTHWGDQADGALEVGAPWSGAPFQVRRSIRCLRNIHWNLISAFILRNATWVQVLTMSPEVH
 QSNVGCRLVTAAYNYFHVTNFFWMFGEHCYLHTAIVLTYSTDRLRKWMFICIGWVFPPIIWAIAIGKL
 YYDNEKCFWFKRPGVYTDYIYQGPMLVLLINFIFLFNIVRILMTKLRASTTSETIQYRKAVKATLVLLP
 LLGITYMLFFVNPGEDEVSRVFIYFNSFLESFQFFVSVFYCFLNSEVRSAIRKRWRHWQDKHSIRARV
 ARAMSIPTSPTRVFSFHSIKQSTAV

TRTRPLEQKLISEEDLAANDILDYKDDDDKV

Chromatograms:

https://cdn.origene.com/chromatograms/mk8060_d08.zip

Restriction Sites:

Sgfl-Mlul

Cloning Scheme:

Cloning sites used for ORF Shutting:



* The last codon before the Stop codon of the ORF

ACCN: NM_001145146

ORF Size: 1332 bp

OTI Disclaimer: The molecular sequence of this clone aligns with the gene accession number as a point of reference only. However, individual transcript sequences of the same gene can differ through naturally occurring variations (e.g. polymorphisms), each with its own valid existence. This clone is substantially in agreement with the reference, but a complete review of all prevailing variants is recommended prior to use. [More info](#)

OTI Annotation: This clone was engineered to express the complete ORF with an expression tag. Expression varies depending on the nature of the gene.

Components: The ORF clone is ion-exchange column purified and shipped in a 2D barcoded Matrix tube containing 10ug of transfection-ready, dried plasmid DNA (reconstitute with 100 ul of water).

Reconstitution Method:

1. Centrifuge at 5,000xg for 5min.
2. Carefully open the tube and add 100ul of sterile water to dissolve the DNA.
3. Close the tube and incubate for 10 minutes at room temperature.
4. Briefly vortex the tube and then do a quick spin (less than 5000xg) to concentrate the liquid at the bottom.
5. Store the suspended plasmid at -20°C. The DNA is stable for at least one year from date of shipping when stored at -20°C.

RefSeq: [NM_001145146.2](#)
RefSeq ORF: 1335 bp

Locus ID: 1394

UniProt ID: [P34998](#)
Cytogenetics: 17q21.31

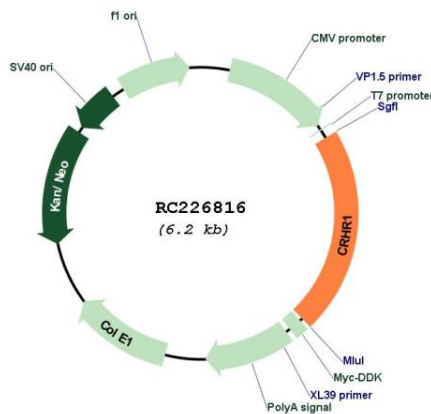
Protein Families: Druggable Genome, GPCR, Transmembrane

Protein Pathways: Long-term depression, Neuroactive ligand-receptor interaction

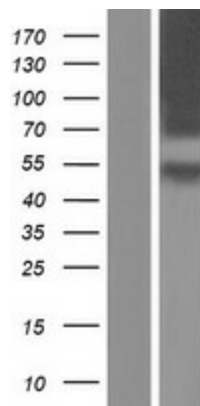
MW: 50.5 kDa

Gene Summary: This gene encodes a G-protein coupled receptor that binds neuropeptides of the corticotropin releasing hormone family that are major regulators of the hypothalamic-pituitary-adrenal pathway. The encoded protein is essential for the activation of signal transduction pathways that regulate diverse physiological processes including stress, reproduction, immune response and obesity. Alternative splicing results in multiple transcript variants. Naturally-occurring readthrough transcription between this gene and upstream GeneID:147081 results in transcripts that encode isoforms that share similarity with the products of this gene. [provided by RefSeq, Aug 2016]

Product images:



Circular map for RC226816



Western blot validation of overexpression lysate (Cat# [LY428723]) using anti-DDK antibody (Cat# [TA50011-100]). Left: Cell lysates from untransfected HEK293T cells; Right: Cell lysates from HEK293T cells transfected with RC226816 using transfection reagent MegaTran 2.0 (Cat# [TT210002]).