

Product datasheet for **RC226814**

NCR1 (NM_001145458) Human Tagged ORF Clone

Product data:

Product Type: Expression Plasmids
Product Name: NCR1 (NM_001145458) Human Tagged ORF Clone
Tag: Myc-DDK
Symbol: NCR1
Synonyms: CD335; LY94; NK-p46; NKP46
Mammalian Cell Selection: Neomycin
Vector: pCMV6-Entry (PS100001)
E. coli Selection: Kanamycin (25 ug/mL)
ORF Nucleotide Sequence: >RC226814 representing NM_001145458
Red=Cloning site Blue=ORF Green=Tags(s)

TTTTGTAATACGACTCACTATAGGGCGGCCGGAATTCGTCGACTGGATCCGGTACCGAGGAGATCTGCC
GCC**CGGATCGCC**

ATGTCTTCCACACTCCCTGCCCTGCTCTGCGTCGGGCTGTGTCTGAGTCAGAGGATCAGCGCCCAGCAGC
AGACTCTCCAAAACCGTTCATCTGGGCCGAGCCCATTTTCATGGTTCCAAAGGAAAAGCAAGTGACCAT
CTGTTGCCAGGAAATTATGGGGCTGTTGAATACCAGCTGCACCTTGAAGGAAGCCTTTTGGCGTGGAC
AGACAAAACCCCTGAGCGGATTAACAAAGTCAAATTTACATCCCGGACATGAACTCCCGCATGGCAG
GGCAATACAGCTGCATCTATCGGGTTGGGGAGCTCTGGTCAGAGCCAGCAACTTCTGGATCTGGTGGT
AACAGAAATGTATGACACACCCACCTCTCGGTTTCATCCTGGACCCGAAGTGATCTCGGGAGAGAAGGTG
ACCTTCTACTGCCGTCTAGACACTGCAACAAGCATGTTCTTACTGCTCAAGGAGGGAAGATCCAGCCACG
TACAGCGCGGATACGGGAAGGTCCAGGGCGAGTTCCTCCCTGGGCCTGTGACCACAGCCACCGAGGGAC
ATACCGATGTTTTGGCTCCTATAACAACCATGCCTGGTCTTTCCCGAGTGAGCCAGTGAAGCTCCTGGTC
ACAGGGCAGATTGAGAACACCAGCCTTGCACTGAAGACCCACCTTTCTGACCATGCCCTCTGGGATC
ACACTGCCAGAATCTCCTTCGGATGGGCTGGCCTTTCTAGTCTGGTGGCTCTAGTGTGGTTCCTGGT
TGAAGACTGGCTCAGCAGGAAGAGGACTAGAGAGCGAGCCAGCAGAGCTTCCACTTGGGAAGGCAGGAGA
AGGCTGAACACACAGACTCTT

ACGCGTACGCGGCCGCTCGAGCAGAAACTCATCTCAGAAGAGGATCTGGCAGCAAATGATATCCTGGATT
ACAAGGATGACGACGATAAGGTTTAA



[View online »](#)

Protein Sequence: >RC226814 representing NM_001145458
Red=Cloning site Green=Tags(s)

MSSTLPALLCVGLCLSQRISAQQQLPKPFIWAEPHFMPKPKQVTICCGNYGAVEYQLHFEGSLFAVD
 RPKPPERINKVKFYIPDMNSRMAGQYSCIYRVGELWSEPSNLLDLVVTEMYDPTLSVHPGPEVISGEKV
 TFYCRDLTATSMFLLLKEGRSSHVQRGYKVAEFPLGPVTTAHRGTYRCFGSYNNHAWSPSEPVKLLV
 TGDIENTSLAPEDPTFPDHALWDHTAQNLLRMGLAFLVLVALVWFLVEDWLSRKRTREASRASTWEGRR
 RLNTQTL

TRTRPLEQKLISEEDLAANDILDYKDDDDKV

Chromatograms: https://cdn.origene.com/chromatograms/mg4397_b01.zip

Restriction Sites: SgfI-MluI

Cloning Scheme:



ACCN: NM_001145458

ORF Size: 861 bp

OTI Disclaimer: The molecular sequence of this clone aligns with the gene accession number as a point of reference only. However, individual transcript sequences of the same gene can differ through naturally occurring variations (e.g. polymorphisms), each with its own valid existence. This clone is substantially in agreement with the reference, but a complete review of all prevailing variants is recommended prior to use. [More info](#)

OTI Annotation: This clone was engineered to express the complete ORF with an expression tag. Expression varies depending on the nature of the gene.

Components: The ORF clone is ion-exchange column purified and shipped in a 2D barcoded Matrix tube containing 10ug of transfection-ready, dried plasmid DNA (reconstitute with 100 ul of water).

Reconstitution Method:

1. Centrifuge at 5,000xg for 5min.
2. Carefully open the tube and add 100ul of sterile water to dissolve the DNA.
3. Close the tube and incubate for 10 minutes at room temperature.
4. Briefly vortex the tube and then do a quick spin (less than 5000xg) to concentrate the liquid at the bottom.
5. Store the suspended plasmid at -20°C. The DNA is stable for at least one year from date of shipping when stored at -20°C.

RefSeq: [NM_001145458.1](#), [NP_001138930.1](#)

RefSeq ORF: 864 bp

Locus ID: 9437

UniProt ID: [O76036](#)

Cytogenetics: 19q13.42

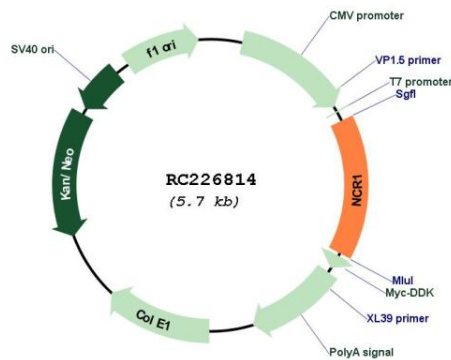
Protein Families: Druggable Genome, Transmembrane

Protein Pathways: Natural killer cell mediated cytotoxicity

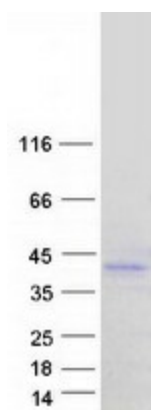
MW: 32.4 kDa

Gene Summary: Cytotoxicity-activating receptor that may contribute to the increased efficiency of activated natural killer (NK) cells to mediate tumor cell lysis.[UniProtKB/Swiss-Prot Function]

Product images:



Circular map for RC226814



Coomassie blue staining of purified NCR1 protein (Cat# [TP326814]). The protein was produced from HEK293T cells transfected with NCR1 cDNA clone (Cat# RC226814) using MegaTran 2.0 (Cat# [TT210002]).