

Product datasheet for **RC226808**

UBE2QL1 (NM_001145161) Human Tagged ORF Clone

Product data:

Product Type: Expression Plasmids
Product Name: UBE2QL1 (NM_001145161) Human Tagged ORF Clone
Tag: Myc-DDK
Symbol: UBE2QL1
Mammalian Cell Selection: Neomycin
Vector: pCMV6-Entry (PS100001)
E. coli Selection: Kanamycin (25 ug/mL)
ORF Nucleotide Sequence: >RC226808 representing NM_001145161
Red=Cloning site Blue=ORF Green=Tags(s)

TTTTGTAATACGACTCACTATAGGGCGGCCGGAATTCGTCGACTGGATCCGGTACCGAGGAGATCTGCC
GCC**CGATCGCC**

ATGAAGGAGCTGCAGGACATCGCGCGCCTTAGCGACCGCTTCATCTCCGTGGAGCTGGTGGACGAGAGCC
TGTTCCGACTGGAACGTGAAGCTGCACCAGGTGGACAAGGACTCGGTGCTGTGGCAGGACATGAAGGAGAC
CAACACCGAGTTCATCCTGCTCAACCTCACCTTCCCGACAACCTCCCTTCTCGCCGCCCTTCATGCGG
GTGCTCAGCCCGCGCCTGGAGAACGGCTACGTGCTGGACGGCGGCCATCTGCATGGAGCTGCTCACGG
CGCCGCTGGTCCAGCGCCTACACCGTGGAGGCCGTATGCGCCAGTTCGCAGCCAGCCTGGTCAAGGG
CCAGGGACGGATCTGTAGAAAAGCTGGCAAATCAAAAAAGTCTTCAGTCGCAAGGAAGCTGAAGCTACC
TTAAGAGTTTGGTGAAGACGCATGAAAAATATGGTTGGGTCACCCCGCCCGTGTCCGACGGC

ACGCGTACGCGGCCGCTCGAGCAGAACTCATCTCAGAAGAGGATCTGGCAGCAAATGATATCCTGGATT
ACAAGGATGACGACGATAAGGTTTAA

Protein Sequence: >RC226808 representing NM_001145161
Red=Cloning site Green=Tags(s)

MKELQDIARLSDRFISVELVDESLFDWNVKLVQDKDSVLWQDMKETNTEFILLNLTFPDNPFSPPFMR
VLSPRENGYVLDGGAICMELLTPRGWSSAYTVEAVMRQFAASLVKQGGRICRKAGKSKKFSRKEAET
FKSLVKTHEKYGWVTPVSDG

TRTRPLEQKLISEEDLAANDILDYKDDDDKV

Chromatograms: https://cdn.origene.com/chromatograms/ja1257_g12.zip

Restriction Sites: SgfI-MluI



[View online »](#)

Cloning Scheme:


ACCN: NM_001145161

ORF Size: 483 bp

OTI Disclaimer: The molecular sequence of this clone aligns with the gene accession number as a point of reference only. However, individual transcript sequences of the same gene can differ through naturally occurring variations (e.g. polymorphisms), each with its own valid existence. This clone is substantially in agreement with the reference, but a complete review of all prevailing variants is recommended prior to use. [More info](#)

OTI Annotation: This clone was engineered to express the complete ORF with an expression tag. Expression varies depending on the nature of the gene.

Components: The ORF clone is ion-exchange column purified and shipped in a 2D barcoded Matrix tube containing 10ug of transfection-ready, dried plasmid DNA (reconstitute with 100 ul of water).

- Reconstitution Method:**
1. Centrifuge at 5,000xg for 5min.
 2. Carefully open the tube and add 100ul of sterile water to dissolve the DNA.
 3. Close the tube and incubate for 10 minutes at room temperature.
 4. Briefly vortex the tube and then do a quick spin (less than 5000xg) to concentrate the liquid at the bottom.
 5. Store the suspended plasmid at -20°C. The DNA is stable for at least one year from date of shipping when stored at -20°C.

RefSeq: [NM_001145161.3](#)

RefSeq ORF: 486 bp

Locus ID: 134111

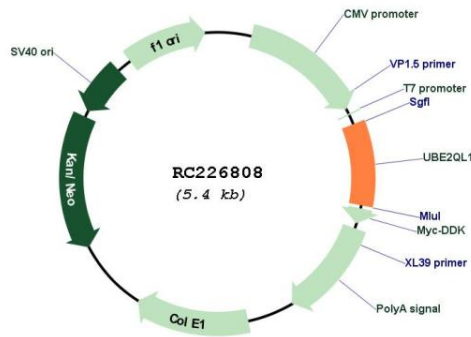
UniProt ID: [A1L167](#)

Cytogenetics: 5p15.31

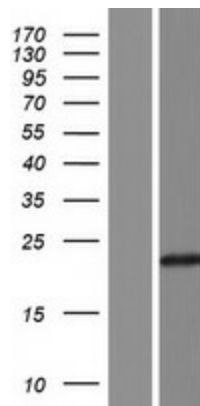
MW: 18.2 kDa

Gene Summary: Probable E2 ubiquitin-protein ligase that catalyzes the covalent attachment of ubiquitin to target proteins. May facilitate the monoubiquitination and degradation of MTOR and CCNE1 through interaction with FBXW7.[UniProtKB/Swiss-Prot Function]

Product images:



Circular map for RC226808



Western blot validation of overexpression lysate (Cat# [LY428736]) using anti-DDK antibody (Cat# [TA50011-100]). Left: Cell lysates from untransfected HEK293T cells; Right: Cell lysates from HEK293T cells transfected with RC226808 using transfection reagent MegaTran 2.0 (Cat# [TT210002]).