

## Product datasheet for **RC226794**

### CRISP2 (NM\_001142407) Human Tagged ORF Clone

#### Product data:

Product Type:	Expression Plasmids
Product Name:	CRISP2 (NM_001142407) Human Tagged ORF Clone
Tag:	Myc-DDK
Symbol:	CRISP2
Synonyms:	CRISP-2; CT36; GAPDL5; TPX1; TSP1
Mammalian Cell Selection:	Neomycin
Vector:	pCMV6-Entry (PS100001)
E. coli Selection:	Kanamycin (25 ug/mL)
ORF Nucleotide Sequence:	>RC226794 representing NM_001142407 Red=Cloning site Blue=ORF Green=Tags(s)

TTTTGTAATACGACTCACTATAGGGCGCCGGGAATTCGTCGACTGGATCCGGTACCGAGGAGATCTGCC  
GCC**CGATCGC**C

ATGGCTTTACTACCGGTGTTGTTTCTGGTACTGTGCTGCTTCCATCTTTACCTGCAGAAGGAAAGGATC  
CCGCTTTTACTGCTTTGTTAACCACCCAGTTGCAAGTGCAAAGGGAGATTGTAATAAACACAATGAACT  
AAGGAAAGCAGTCTCTCCACCTGCCAGTAACATGCTAAAGATGGAATGGAGCAGAGAGGTAACAACGAAT  
GCCCAAAGGTGGCAAACAAGTGCCTTTACAACATAGTGATCCAGAGGACCGCAAACCAAGTACAAGT  
GTGGTGAAGTCTCTATATGTCAAGTGACCCTACTTCTGGTCTTCTGCAATCCAAGCTGGTATGACGA  
GATCCTAGATTTTGTCTATGGTGTAGGACCAAAGAGTCCAATGCAGTTGTTGGACATTATACTCAGCTT  
GTTTGGTACTCGACTTACCAGGTAGGCTGTGGAATTGCCTACTGTCCCAATCAAGATAGTCTAAAATACT  
ACTATGTTTGCCAATATTGTCCTGCTGGTAATAATATGAATAGAAAGAATACCCCGTACCAACAAGGAAC  
ACCTTGTGCCGTTGCCCTGATGACTGTGACAAAGGACTATGCACCAATAGTTGCCAGTATCAAGATCTC  
CTAAGTAACTGTGATTCTTGAAGAATACAGCTGGCTGTGAACATGAGTTACTCAAGGAAAAGTGAAGG  
CTACTTGCCTATGTGAGAACAAAATTTAC

**ACGCGT**ACGCGGCCGCTCGAGCAGAAACTCATCTCAGAAGAGGATCTGGCAGCAAATGATATCCTGGATT  
ACAAGGATGACGACGATAAGGTTTAA



[View online »](#)

**Protein Sequence:** >RC226794 representing NM\_001142407  
Red=Cloning site Green=Tags(s)

MALLPVLFLVTLLPSLPAEGKDP AFTALLTTQLQVQREIVNKHNLRKAVSPPASNMLKMEWSREVTTN  
 AQRWANKCTLQHSDPEDRKTSTRCGENLYMSSDPTSWSSAIQSWYDEILDFVYGVGPKSPNAVVGHYTQL  
 VWYSTYQVGGCIAYCPNQDSLKYYYYVCYCPAGNNMNRKNTPYQQGTPCAGCPDDCDKGLCTNSCQYQDL  
 LSNCDLKN TAGCEHELLKEKCKATCLCENKIY

TRTRPLEQKLISEEDLAANDILDYKDDDDKV

**Chromatograms:** [https://cdn.origene.com/chromatograms/mk8074\\_h03.zip](https://cdn.origene.com/chromatograms/mk8074_h03.zip)

**Restriction Sites:** SgfI-MluI

**Cloning Scheme:**



**ACCN:** NM\_001142407

**ORF Size:** 729 bp

**OTI Disclaimer:** The molecular sequence of this clone aligns with the gene accession number as a point of reference only. However, individual transcript sequences of the same gene can differ through naturally occurring variations (e.g. polymorphisms), each with its own valid existence. This clone is substantially in agreement with the reference, but a complete review of all prevailing variants is recommended prior to use. [More info](#)

**OTI Annotation:** This clone was engineered to express the complete ORF with an expression tag. Expression varies depending on the nature of the gene.

**Components:** The ORF clone is ion-exchange column purified and shipped in a 2D barcoded Matrix tube containing 10ug of transfection-ready, dried plasmid DNA (reconstitute with 100 ul of water).

**Reconstitution Method:**

1. Centrifuge at 5,000xg for 5min.
2. Carefully open the tube and add 100ul of sterile water to dissolve the DNA.
3. Close the tube and incubate for 10 minutes at room temperature.
4. Briefly vortex the tube and then do a quick spin (less than 5000xg) to concentrate the liquid at the bottom.
5. Store the suspended plasmid at -20°C. The DNA is stable for at least one year from date of shipping when stored at -20°C.

**RefSeq:** [NM\\_001142407.3](#)

**RefSeq ORF:** 732 bp

**Locus ID:** 7180

**UniProt ID:** [P16562](#)

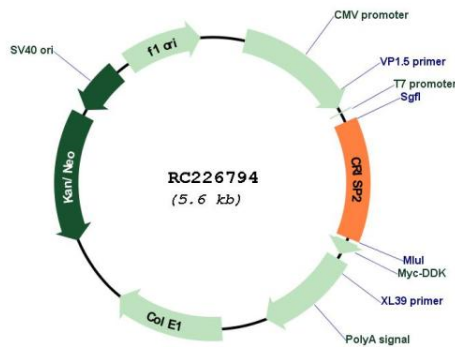
**Cytogenetics:** 6p12.3

**Protein Families:** Secreted Protein

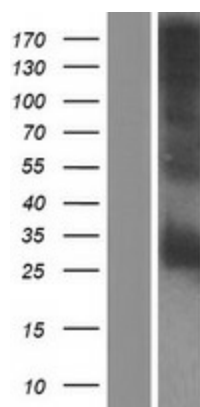
**MW:** 27.1 kDa

**Gene Summary:** May regulate some ion channels' activity and thereby regulate calcium fluxes during sperm capacitation.[UniProtKB/Swiss-Prot Function]

**Product images:**



Circular map for RC226794



Western blot validation of overexpression lysate (Cat# [LY428096]) using anti-DDK antibody (Cat# [TA50011-100]). Left: Cell lysates from untransfected HEK293T cells; Right: Cell lysates from HEK293T cells transfected with [RC227177] using transfection reagent MegaTran 2.0 (Cat# [TT210002]).