

Product datasheet for RC226792

C5orf24 (NM_001135586) Human Tagged ORF Clone

Product data:

Product Type: Expression Plasmids
Product Name: C5orf24 (NM_001135586) Human Tagged ORF Clone
Tag: Myc-DDK
Symbol: C5orf24
Mammalian Cell Selection: Neomycin
Vector: pCMV6-Entry (PS100001)
E. coli Selection: Kanamycin (25 ug/mL)
ORF Nucleotide Sequence: >RC226792 ORF sequence
 Red=Cloning site Blue=ORF Green=Tags(s)

TTTTGTAATACGACTCACTATAGGGCGGCCGGAATTCGTCGACTGGATCCGGTACCGAGGAGATCTGCC
 GCC**CGATCGCC**

ATGATGCATCCTGTTGCCAGCAGTAATCCAGCTTCTGTGGGCCTGGCAAGCCTTCTGCCTCAATGAAG
 ATGCCATGAGAGCTGCTGATCAGTTTGACATATATTCTCCAGCAAAGCAAATACAGCCACACAGTCAA
 CCACAAACCAATGGTTTGTCCAGAGGCAAGACCCATTAATGAAACACACTGCAGACTACAAGTGGCAGA
 AGCATAGAAAATAAAGATGAACTAAAGAAAAAGAAGAATCTCAACCGATCTGGTAAGCGTGGCCGGCCTT
 CGGGAACCAACAAATCAGCAGGATACCGGACCAGCACAGGACAGCCCTGGGAACCACCAAGCAGCTGG
 ATTTAAGACAAGTCCAGGCAGACCTTTGGGGACAATAAGCTGCGGGATACAAAGTCAGCCAGGCAGA
 CCTCCAGGTAGCATTAAAGCTCTATCCCGTCTTGCCGATCTGGTTATGGCTGTGGCACTGCTGTTTTT
 CTTACCCTATGATGCATGGCAGAGCAGTTCATGGGGTAGAGGAACTAGCAGTGAAGTCAAACCACCCAA
 TGAG

ACGCGTACGCGGCCGCTCGAGCAGAACTCATCTCAGAAGAGGATCTGGCAGCAAATGATATCCTGGATT
 ACAAGGATGACGACGATAAGGTTTAA

Protein Sequence: >RC226792 protein sequence
 Red=Cloning site Green=Tags(s)

MMHPVASSNPAFCGPGKPSCLNEDAMRAADQFDIYSSQQSKYSHTVNHKPMVCQRQDPLNETHLQTTSGR
 SIEIKDELKKNLNRSGKGRPSGTTKSAGYRTSTGRPLGTTKAAGFKTSPGRPLGTTKAAGYKVPGR
 PPGSIKALSRLADLGYCGTAAFPYPMMHGRAVHGVETSSEVKPPNE

TRTRPLEQKLISEEDLAANDILDYKDDDDKV

Chromatograms: https://cdn.origene.com/chromatograms/mk6353_e05.zip



[View online »](#)

Restriction Sites: SgfI-MluI

Cloning Scheme:



ACCN: NM_001135586

ORF Size: 564 bp

OTI Disclaimer: The molecular sequence of this clone aligns with the gene accession number as a point of reference only. However, individual transcript sequences of the same gene can differ through naturally occurring variations (e.g. polymorphisms), each with its own valid existence. This clone is substantially in agreement with the reference, but a complete review of all prevailing variants is recommended prior to use. [More info](#)

OTI Annotation: This clone was engineered to express the complete ORF with an expression tag. Expression varies depending on the nature of the gene.

Components: The ORF clone is ion-exchange column purified and shipped in a 2D barcoded Matrix tube containing 10ug of transfection-ready, dried plasmid DNA (reconstitute with 100 ul of water).

- Reconstitution Method:**
1. Centrifuge at 5,000xg for 5min.
 2. Carefully open the tube and add 100ul of sterile water to dissolve the DNA.
 3. Close the tube and incubate for 10 minutes at room temperature.
 4. Briefly vortex the tube and then do a quick spin (less than 5000xg) to concentrate the liquid at the bottom.
 5. Store the suspended plasmid at -20°C. The DNA is stable for at least one year from date of shipping when stored at -20°C.

RefSeq: [NM_001135586.1](#), [NP_001129058.1](#)

RefSeq Size: 5083 bp

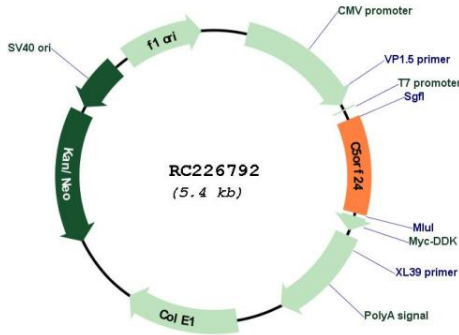
RefSeq ORF: 567 bp

Locus ID: 134553

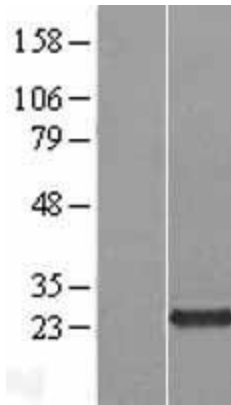
UniProt ID: [Q7Z6I8](#)

Cytogenetics: 5q31.1
 MW: 20.1 kDa

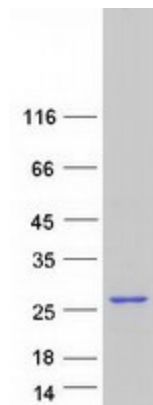
Product images:



Circular map for RC226792



Western blot validation of overexpression lysate (Cat# [LY427625]) using anti-DDK antibody (Cat# [TA50011-100]). Left: Cell lysates from untransfected HEK293T cells; Right: Cell lysates from HEK293T cells transfected with RC226792 using transfection reagent MegaTran 2.0 (Cat# [TT210002]).



Coomassie blue staining of purified C5orf24 protein (Cat# [TP326792]). The protein was produced from HEK293T cells transfected with C5orf24 cDNA clone (Cat# RC226792) using MegaTran 2.0 (Cat# [TT210002]).