

Product datasheet for **RC226790**

APLP2 (NM_001142277) Human Tagged ORF Clone

Product data:

Product Type:	Expression Plasmids
Product Name:	APLP2 (NM_001142277) Human Tagged ORF Clone
Tag:	Myc-DDK
Symbol:	APLP2
Synonyms:	APLP-2; APPH; APPL2; CDEBP
Mammalian Cell Selection:	Neomycin
Vector:	pCMV6-Entry (PS100001)
E. coli Selection:	Kanamycin (25 ug/mL)



[View online »](#)

ORF Nucleotide Sequence:

>RC226790 representing NM_001142277
 Red=Cloning site Blue=ORF Green=Tags(s)

TTTTGTAATACGACTCACTATAGGGCGGCCGGGAATTCGTCGACTGGATCCGGTACCGAGGAGATCTGCC
 GCC**CGCATCGCC**

ATGGCGGCCACCGGGACCGCGGCCCGCGACGCCACGGGCAGGCTCCTGCTTCTGCTGCTGGTGGGGCTCA
 CGGCGCCTGCCTTGGCGCTGGCCGGCTACATCGAGGCTCTTGCAGCCAATGCCGGAACAGGATTTGCTGT
 TGCTGAGCCTCAAATCGCAATGTTTTGTGGGAAGTAAATATGCATGTGAACATTCAGACTGGGAAATGG
 GAACCTGATCCAACAGGCACCAAGAGCTGCTTTGAAACAAAAGAAGAAGTTCTTCAGTACTGTCAGGAGA
 TGTATCCAGAGCTACAGATCACAAATGTGATGGAGGCAAACCAGCGGGTAGTATTGACAACTGGTGCCG
 GAGGGACAAAAGCAATGCAAGAGTCGCTTTGTTACACCTTTCAAGTGTCTCGTGGGTGAATTTGTAAGT
 GATGTCCTGCTAGTTCAGAAAAGTGCCAGTTTTTCCACAAGAGCGGATGGAGGTGTGTGAGAATCACC
 AGCACTGGCACACGGTAGTCAAAGAGGCATGTCTGACTCAGGGAATGACCTTATATAGCTACGGCATGCT
 GCTCCCATGTGGGTAGACCAGTTCATGGCACTGAATATGTGTGCTGCCCTCAGACAAAGATTATTGGA
 TCTGTGTCAAAGAAGAGGAAGGGAAGATGAAGAGGAAGAGGAAGGAAGATGAAGAGGAAGACTATG
 ATGTTTATAAAAGTGAATTTCTACTGAAGCAGATCTGGAAGACTTCACAGAAGCAGCTGTGGATGAGGA
 TGATGAGGATGAGGAAGAAGGGGAGGAAGTGGTGGAGGACCGAGATTACTACTATGACACCTTCAAAGGA
 GATGACTACAATGAGGAGAATCCTACTGAACCCGGCAGCGACGGCACCATGTCAGACAAGGAAATTA
 ATCTATGATGTCAAAGTTCTCCAACCTCTGCCAACCAATGATGTTGATGTGATTTTCGAGACCTCTGCAGA
 TGATAATGAGCATGCTCGCTTCCAGAAGGCTAAGGAGCAGCTGGAGATTCGGCACCGCAACCGAATGGAC
 AGGGTAAAGAAGGAATGGGAAGAGGCAGAGCTTCAAGCTAAGAACCTCCCAAGCAGAGAGGCAGACTC
 TGATTCAGCACTTCCAAGCCATGGTTAAAGCTTTAGAGAAGGAAGCAGCCAGTGAGAAGCAGCAGCTGGT
 GGAGACCCACCTGGCCCGAGTGGAAGCTATGCTGAATGACCGCCGTCGGATGGCTCTGGAGA
 ACTACCTGCTGCCTTGCACTGACCCGCCACGGCCTCATCGCATTCTCCAGGCCTTACGGCGTTATGTCCGTGCTG
 AGAACAAAGATCGCTTACATACCATCCGTATTACCAGCATGTGTTGGCTGTTGACCCAGAAAAGGCGGC
 CCAGATGAAATCCAGGTGATGACACATCTCCACGTGATTGAAGAAAGGAGGAACCAAAGCCTCTCTCTG
 CTCTACAAAGTACCTTATGTAGCCCAAGAAATTCAAGAGGAAATGATGAGCTCCTTCAGGAGCAGCGTG
 CAGATATGGACCAGTTCCTGCCTCAATCTCAGAGACCCCTGTGGACGTCCGGGTGAGCTCTGAGGAGAG
 TGAGGAGATCCCACCGTTCACCCCTTCCACCCCTTCCAGCCCTACCTGAGAACGAAGGATCTGGAGTG
 GGAGAGCAGGATGGGGGACTGATCGGTGCCGAAGAGAAAGTGATTAACAGTAAGAATAAAGTGGATGAAA
 ACATGGTCATTGACGAGACTCTGGATGTTAAGGAAATGATTTTCAATGCCGAGAGAGTTGGAGGCCTCGA
 GGAAGAGCGGGAATCCGTGGGCCACTGCGGGAGGACTTCAGTCTGAGTAGCAGTCTCTATTGGCCTG
 CTGGTCATCGCAGTGGCCATTGCCACGGTCATCGTCATCAGCCTGGTGTGCTGAGGAAGAGGCAGTATG
 GCACCATCAGCCACGGGATCGTGGAGGTTGATCCAATGCTCACCCAGAAGAGCGTCACCTGAACAAGAT
 GCAGAACCATGGCTATGAGAACCCACCTACAAATACCTGGAGCAGATGCAGATT

ACGCGTACGCGGCCGCTCGAGCAGAACTCATCTCAGAAGAGGATCTGGCAGCAAATGATATCCTGGATT
 ACAAGGATGACGACGATAAGGTTTAA

Protein Sequence: >RC226790 representing NM_001142277
 Red=Cloning site Green=Tags(s)

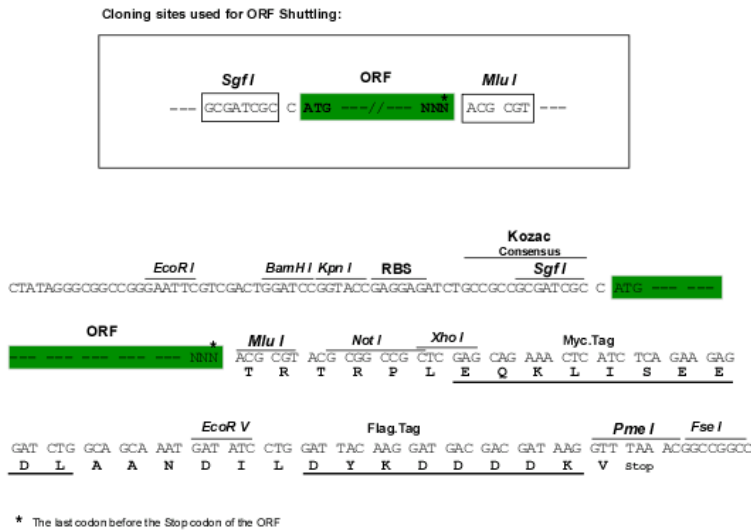
MAATGTA AAAATGRLLLLLVLG L TAPALALAGYIEALAA NAGTGF A VAEPQIAMFCGKLN MHVNIQTGKW
 EPDPTG TKSCFETKEEVLQY CQEMYP ELQITNVMEANQRV SIDNWCRRDKKQCKSRFVTPFKCLVGEFVS
 DVLLVPEK CQFFHKERMEVC ENHQHWHVVK EA CLTQGM TLYSYGML LPCGVDQFHGTEYVCCPQT K IIG
 SVSKEEEEEDEEEEEDEE EEDYDVKSEFPTEADLEDFTEAAVDEDEDEE EEEVVEDRDY YDTFKG
 DDYNEENPTEPGSDG TMSDKEITHDVKVPPTPLPTNDVDVYFETSADDNEHARFQKAKEQLEIRHRNRMD
 RVKKEWEEAE LQAKNLPKAERQT LIQHFQAMVKALEKEAASEKQQLVETHLARVEAMLNDRRRMALENYL
 AALQSDPPRPHRILQALRRYVRAENKDR LHTIRHYQHLVAVDPEKAAQMSQVMTHLVIEERRNQSLSL
 LYKVPYVAQEIQEEIDELLQEQRADMDQFTAS ISETPVDVVRV SSEESEEIPPFHFPFPF PALPENEGSGV
 GEQDGG LIGAE EKVIN SKNKVDENMVIDETLDVKEMIFNAERVGGLEERESVGPLREDFSLS SSSALIGL
 LVIAVAIATVIVISLVMLRKRQYGTISHGIVEVDPMLTPEERHLNKMQN HGYENPTYKYLEQMQI

TRTRPLEQKLISEEDLAANDILDYKDDDDKV

Chromatograms: https://cdn.origene.com/chromatograms/mk8006_e11.zip

Restriction Sites: SgfI-MluI

Cloning Scheme:



ACCN: NM_001142277

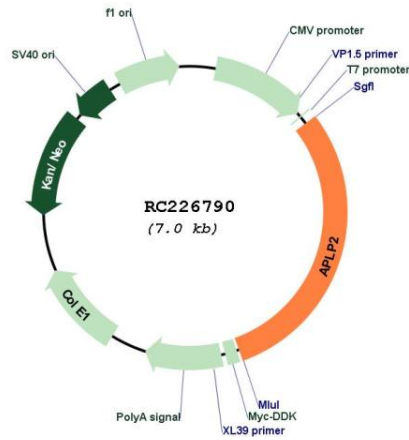
ORF Size: 2085 bp

OTI Disclaimer: The molecular sequence of this clone aligns with the gene accession number as a point of reference only. However, individual transcript sequences of the same gene can differ through naturally occurring variations (e.g. polymorphisms), each with its own valid existence. This clone is substantially in agreement with the reference, but a complete review of all prevailing variants is recommended prior to use. [More info](#)

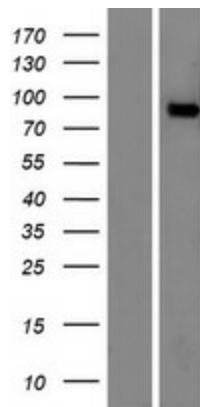
OTI Annotation: This clone was engineered to express the complete ORF with an expression tag. Expression varies depending on the nature of the gene.

Components:	The ORF clone is ion-exchange column purified and shipped in a 2D barcoded Matrix tube containing 10ug of transfection-ready, dried plasmid DNA (reconstitute with 100 ul of water).
Reconstitution Method:	<ol style="list-style-type: none">1. Centrifuge at 5,000xg for 5min.2. Carefully open the tube and add 100ul of sterile water to dissolve the DNA.3. Close the tube and incubate for 10 minutes at room temperature.4. Briefly vortex the tube and then do a quick spin (less than 5000xg) to concentrate the liquid at the bottom.5. Store the suspended plasmid at -20°C. The DNA is stable for at least one year from date of shipping when stored at -20°C.
RefSeq:	<u>NM_001142277.2</u>
RefSeq ORF:	2088 bp
Locus ID:	334
UniProt ID:	<u>Q06481</u>
Cytogenetics:	11q24.3
Protein Families:	Druggable Genome, Transmembrane
MW:	79.1 kDa
Gene Summary:	<p>This gene encodes amyloid precursor- like protein 2 (APLP2), which is a member of the APP (amyloid precursor protein) family including APP, APLP1 and APLP2. This protein is ubiquitously expressed. It contains heparin-, copper- and zinc- binding domains at the N-terminus, BPTI/Kunitz inhibitor and E2 domains in the middle region, and transmembrane and intracellular domains at the C-terminus. This protein interacts with major histocompatibility complex (MHC) class I molecules. The synergy of this protein and the APP is required to mediate neuromuscular transmission, spatial learning and synaptic plasticity. This protein has been implicated in the pathogenesis of Alzheimer's disease. Multiple alternatively spliced transcript variants encoding different isoforms have been identified. [provided by RefSeq, Aug 2011]</p>

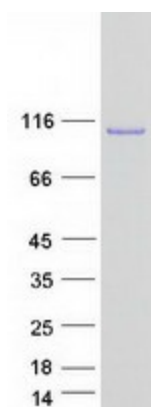
Product images:



Circular map for RC226790



Western blot validation of overexpression lysate (Cat# [LY428001]) using anti-DDK antibody (Cat# [TA50011-100]). Left: Cell lysates from untransfected HEK293T cells; Right: Cell lysates from HEK293T cells transfected with RC226790 using transfection reagent MegaTran 2.0 (Cat# [TT210002]).



Coomassie blue staining of purified APLP2 protein (Cat# [TP326790]). The protein was produced from HEK293T cells transfected with APLP2 cDNA clone (Cat# RC226790) using MegaTran 2.0 (Cat# [TT210002]).