

Product datasheet for **RC226778**

E74 like factor 1 (ELF1) (NM_001145353) Human Tagged ORF Clone

Product data:

Product Type:	Expression Plasmids
Product Name:	E74 like factor 1 (ELF1) (NM_001145353) Human Tagged ORF Clone
Tag:	Myc-DDK
Symbol:	E74 like factor 1
Synonyms:	EFTUD1; RIA1
Mammalian Cell Selection:	Neomycin
Vector:	pCMV6-Entry (PS100001)
E. coli Selection:	Kanamycin (25 ug/mL)



[View online »](#)

ORF Nucleotide Sequence:

>RC226778 representing NM_001145353
 Red=Cloning site Blue=ORF Green=Tags(s)

TTTTGTAATACGACTCACTATAGGGCGGCCGGAATTCGTCGACTGGATCCGGTACCGAGGAGATCTGCC
 GCC**GCGATCGCC**

ATGGCTGCTGTTGTCCAACAGAACGACCTAGTATTGAATTTGCTAGTAACGTCATGGAGGATGAACGAC
 AGCTTGGTGATCCAGCTATTTTTCTGCCGTAATTGTGGAACATGTTCTGGTGCTGATATTCTCAATAG
 TTATGCCGGTCTAGCCTGTGTGGAAGAGCCCAATGACATGATTACTGAGAGTTCACTGGATGTTGCTGAA
 GAAGAAATCATAGACGATGATGATGACATCACCCCTTACAGTTGAAGCTTCTTGTGATGACGGGGATG
 AAACAATTGAAACTATTGAGGCTGCTGAGGCACTCCTCAATATGGATTCCCCTGGCCCTATGCTGGATGA
 AAAACGAATAAATGGGATTCCTGAAGTGTGGAACACAGCAGGTGCAAGAAAAATGCAGACTCACCG
 GGAGCCTCATCACCAGAACAGCCTAAGAGGAAAAAGGAAGAAAACTAAACCACCAGCAGATTCCC
 CAGCCACTACGCCAAATATATCTGTGAAGAAGAAAAACAAGATGAAAGGGAAACACAATTTATCTTTG
 GGAGTTTTACTGGCACTGCTCCAGGACAAGGCTACTTGTCTAAATACATCAAGTGGACCCAGCGAGAG
 AAAGGCATTTTTAAATTGGTGGATTCTAAAGCAGTGTCCAGTTGTGGGGAAAGCACAAAAACAACCTG
 ATATGAATTATGAGACCATGGGAAGAGCACTCAGTACTATTACCAAAGGGTATTCTGGCAAAAGTGGGA
 AGGTGACGCGCTTGGTGTATCAGTTTAAAGAAATGCCAAAAGATCTTATATATAAATGATGAGGATCCA
 AGTTCCAGCATAGAGTCTTCAGATCCATCGCTATCTTCATCAGCCACTTCAAATAGGAATCAAACCAGCC
 GGTGAGAGTATCTTCAAGTCCAGGGGTAAAAGGAGGAGCCACTACAGTTCTAAAACCAGGGAAATCTAA
 AGCTGCAAAACCAAAGATCCTGTGGAAGTTGCACAACCATCAGAAGTTTGAGGACAGTGCAGCCCAGC
 CAGTCTCCATATCCTACCCAGCTCTCCGACTGTTTATGTAGTACAGCCAGTACAGGCTGTCCAGAGG
 GAGAAGCAGCTAGAACCAGTACCATGCAGGATGAAACATTAATTTCTCCGTTTCAAGATATTAGGACTAT
 ACAGGCTCCAACCAAGTTCAGTGGTTGTCTCCTAGGAATCAGCAGTTGCATACAGTAAACACTCCAA
 ACAGTGCCACTCAACAAGTTATAGCCAGCACAGATCCATCAGCAGTACTGGATCTCAGAAGTTTATTT
 TACAAGCCATTCCATCATCACAGCCATGACAGTACTGAAAGAAAATGTCATGCTGCAGTCAAAAAGGC
 GGGCTCTCCTCTCAATTGTCTTGGGCCCTGCCAGGTTGAGCAGGTCCTTACTAGCAATGTTGAGACC
 ATTTGCAATGGAACCGTCAAGTGTGGTCTCTCCATCCTTCAAGTACTGCACCTGTGGTGACCTTTT
 CTCCTCGAGTTCACAGTGGTGTCTACCCACCTGGCACTGTAATCACTTCAAGTATCAAACTCAAGA
 AACAAAACCTTACACAGGAAGTAGAGAAAAAGGAATCTGAAGATCATTTGAAAGAGAACTGAGAAA
 ACGGAGCAGCAGCCACAGCCTTATGTGATGGTAGTGTCCAGTTCATGGATTTACTTCTCAGGTAGCTA
 TGAACAAAACGAACTGCTGGAACCAACTCTTTT

ACGCGTACGCGGCCGCTCGAGCAGAACTCATCTCAGAAGAGGATCTGGCAGCAAATGATATCCTGGATT
 ACAAGGATGACGACGATAAGGTTTAA

Protein Sequence:

>RC226778 representing NM_001145353
 Red=Cloning site Green=Tags(s)

MAAVVQQNDLVFEFASNVMEDERQLGDPAIFPAVIVEHVPADILNSYAGLACVEEPNDMITESSLDVAE
 EEIIDDDDDITLVEASCHDGETIETIEAAEALLNMDSPGPMLDEKRINGIPEVMETQQVQEKYADSP
 GASSPEQPKRKKGRKTKPPRPDSPATTPNISVKKKNKDGKNTIYLWELLALLQDKATCPKYIKWTQRE
 KGIFKLVDSKAVSRLWGHKHNKPDMMNYETMGRALRYYYQRGILAKVEGQRLVYQFKEMPKDLIYINDEDP
 SSSIESSDPSLSSSATSNRNQTSSRVSSSPGVKGGATVLPKPGNSKAAKPKDPVEVAQPSEVLRTVQPT
 QSPYPTQLFRTVHVVPVQAVPEGEAARTSTMQDETLNSSVQSIRTIQAPTQVPVVVSPRNQQLHTVTLQ
 TVPLTTVIASTDPSAGTGSQKFIQAIIPSSQPMVTKENVMLQSQKAGSPPSIVLGAQVQVQLTSNVQT
 ICNGTVSVASSPSFSATAPVVTFSRSSLVAHPPGTVITSVIKTQETKTLTQEVEKKESEDHLKENTEK
 TEQQPQPYVMVSSSNGFTSQVAMKQNELLEPNSF

TRTRPLEQKLISEEDLAANDILDYKDDDDKV

Chromatograms:

https://cdn.origene.com/chromatograms/mk8068_h10.zip

Restriction Sites: SgfI-MluI

Cloning Scheme:



ACCN: NM_001145353

ORF Size: 1785 bp

OTI Disclaimer: The molecular sequence of this clone aligns with the gene accession number as a point of reference only. However, individual transcript sequences of the same gene can differ through naturally occurring variations (e.g. polymorphisms), each with its own valid existence. This clone is substantially in agreement with the reference, but a complete review of all prevailing variants is recommended prior to use. [More info](#)

OTI Annotation: This clone was engineered to express the complete ORF with an expression tag. Expression varies depending on the nature of the gene.

Components: The ORF clone is ion-exchange column purified and shipped in a 2D barcoded Matrix tube containing 10ug of transfection-ready, dried plasmid DNA (reconstitute with 100 ul of water).

Reconstitution Method:

1. Centrifuge at 5,000xg for 5min.
2. Carefully open the tube and add 100ul of sterile water to dissolve the DNA.
3. Close the tube and incubate for 10 minutes at room temperature.
4. Briefly vortex the tube and then do a quick spin (less than 5000xg) to concentrate the liquid at the bottom.
5. Store the suspended plasmid at -20°C. The DNA is stable for at least one year from date of shipping when stored at -20°C.

RefSeq: [NM_001145353.1](#), [NP_001138825.1](#)

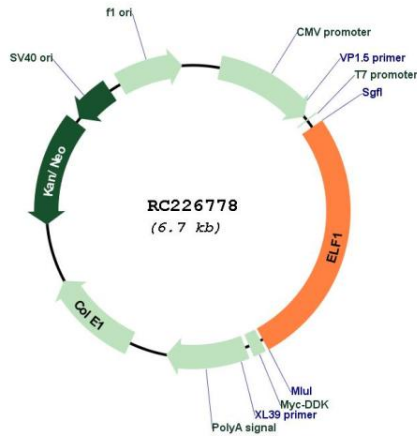
RefSeq ORF: 1788 bp

Locus ID: 1997

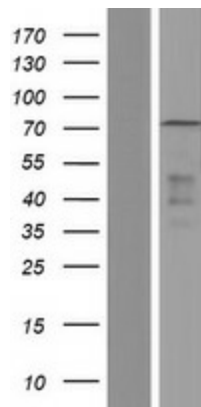
UniProt ID: [P32519](#)

Cytogenetics: 13q14.11
Protein Families: Transcription Factors
MW: 64.7 kDa
Gene Summary: This gene encodes an E26 transformation-specific related transcription factor. The encoded protein is primarily expressed in lymphoid cells and acts as both an enhancer and a repressor to regulate transcription of various genes. Alternative splicing results in multiple transcript variants. [provided by RefSeq, Feb 2009]

Product images:



Circular map for RC226778



Western blot validation of overexpression lysate (Cat# [LY428838]) using anti-DDK antibody (Cat# [TA50011-100]). Left: Cell lysates from untransfected HEK293T cells; Right: Cell lysates from HEK293T cells transfected with RC226778 using transfection reagent MegaTran 2.0 (Cat# [TT210002]).