

Product datasheet for **RC226771**

EB2 (MAPRE2) (NM_001143826) Human Tagged ORF Clone

Product data:

Product Type:	Expression Plasmids
Product Name:	EB2 (MAPRE2) (NM_001143826) Human Tagged ORF Clone
Tag:	Myc-DDK
Symbol:	EB2
Synonyms:	CSCSC2; EB1; EB2; RP1
Mammalian Cell Selection:	Neomycin
Vector:	pCMV6-Entry (PS100001)
E. coli Selection:	Kanamycin (25 ug/mL)
ORF Nucleotide Sequence:	>RC226771 representing NM_001143826 Red=Cloning site Blue=ORF Green=Tags(s)

TTTTGTAATACGACTCACTATAGGGCGCCGGGAATTCGTCGACTGGATCCGGTACCGAGGAGATCTGCCGCC**CGGATCGCC**

ATGGCGGTCAATGTGTATTCTACCTCGATAACCCAAGAGACTATGAGCAGACATGACATCATTGCATGGGTTAATGACATAGTATCTTTAACTACACAAAAGTGAACAGCTTTGTTCCAGGAGCGGCCTATTGCCAATCATGGACATGCTCTTCCCTGGCTGCATTAGTTTGAAGAAAGTAAAATTTCAAGCAAAGCTGGAACATGAATATTTACAATTTTAACTTCTGCAAGCATCATTTAAGCGAATGAACGTTGATAAGGTAATTCAGTGGAGAAGCTAGTGAAGGACGTTTCCAGGACAACCTGGATTTTATTCAATGGTTTAAAGAAATCTATGATGCTAACTACGATGGGAAGGAGTATGATCCTGTAGAGGCACGACAAGGGCAAGATGCAATTCCTCCTCCTGACCCTGGTGAACAGATCTTCAACCTGCCAAAAAGTCTCACCATGCAAACCTCCCCACAGCAGGTGCAGCTAATCAAGTCCAGCAGCTAAACCAGGATCCACACCTTCTCGACCCTCATCAGCCAAAAGGGCTTCTCCAGTGGCTCAGCATCCAAATCCGATAAAGATTTAGAAACGCAGGTCATACAGCTTAATGAACAGGTACATTCAAAAACCTGGCCCTGAAGGCCTGGAAAAGGAAAGGGATTTCTACTTTGGGAAGTTGAGAGAGATCGAGCTACTCTGCCAAGAACACGGGCAGGAAAATGATGACCTCGTGCAGAGACTAATGGACATCCTGTATGCTTCAAGAACAACAGGGCCACAGAAGAGCCGGAAGCAGAGGAGCAAGCCCACGAACAGCAGCCCCCGCAGCAGGAAGAGTAC

ACGCGTACGCGGCCGCTCGAGCAGAAACTCATCTCAGAAGAGGATCTGGCAGCAAATGATATCCTGGATTACAAGGATGACGACGATAAGGTTTAA



[View online »](#)

Protein Sequence: >RC226771 representing NM_001143826
Red=Cloning site Green=Tags(s)

MAVNVYSTSITQETMSRHDIIAWVNDIVSLNYTKVEQLCSGAAYCQFMDMLFPGCISLKKVKFQAKLEHE
 YIHNFKLLQASFKRMNVKVIPVEKLVKGRFQDNLDIFIQWFKFYDANYDGKEYDPVEARQGQDAIPPPD
 PGEQIFNLPKSSHANSPTAGAAKSSPAAKPGSTPSRPSSAKRASSSGSASKSDKDLTQVIQLNEQVHS
 LKLALLEGVEKERDFYFGKLR EIELLCQEHGQENDDLQRLMDILYASEEHGHTEEPEAEQAHEQPPQ
 QEEY

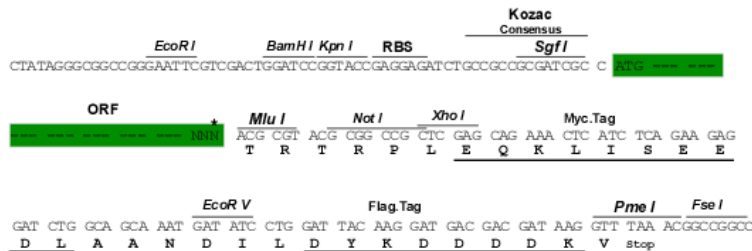
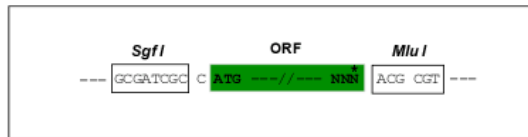
TRTRPLEQKLISEEDLAANDILDYKDDDDKV

Chromatograms: https://cdn.origene.com/chromatograms/ja1512_e08.zip

Restriction Sites: SgfI-MluI

Cloning Scheme:

Cloning sites used for ORF Shuttling:



* The last codon before the Stop codon of the ORF

ACCN: NM_001143826

ORF Size: 852 bp

OTI Disclaimer: The molecular sequence of this clone aligns with the gene accession number as a point of reference only. However, individual transcript sequences of the same gene can differ through naturally occurring variations (e.g. polymorphisms), each with its own valid existence. This clone is substantially in agreement with the reference, but a complete review of all prevailing variants is recommended prior to use. [More info](#)

OTI Annotation: This clone was engineered to express the complete ORF with an expression tag. Expression varies depending on the nature of the gene.

Components: The ORF clone is ion-exchange column purified and shipped in a 2D barcoded Matrix tube containing 10ug of transfection-ready, dried plasmid DNA (reconstitute with 100 ul of water).

Reconstitution Method:

1. Centrifuge at 5,000xg for 5min.
2. Carefully open the tube and add 100ul of sterile water to dissolve the DNA.
3. Close the tube and incubate for 10 minutes at room temperature.
4. Briefly vortex the tube and then do a quick spin (less than 5000xg) to concentrate the liquid at the bottom.
5. Store the suspended plasmid at -20°C. The DNA is stable for at least one year from date of shipping when stored at -20°C.

RefSeq: [NM_001143826.2](#), [NP_001137298.1](#)

RefSeq ORF: 855 bp

Locus ID: 10982

UniProt ID: [Q15555](#)

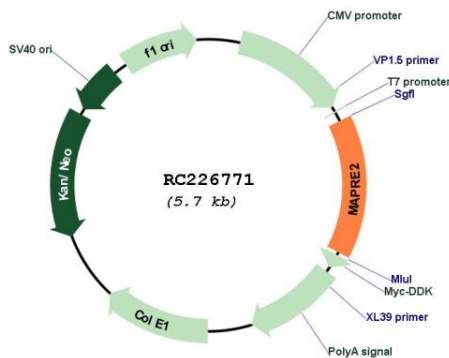
Cytogenetics: 18q12.1-q12.2

Protein Families: Druggable Genome

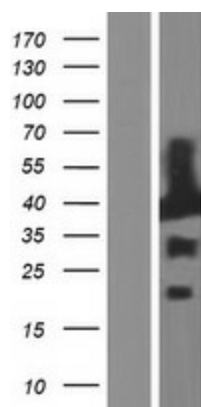
MW: 32.1 kDa

Gene Summary: The protein encoded by this gene shares significant homology to the adenomatous polyposis coli (APC) protein-binding EB1 gene family. This protein is a microtubule-associated protein that is necessary for spindle symmetry during mitosis. It is thought to play a role in the tumorigenesis of colorectal cancers and the proliferative control of normal cells. Alternative splicing of this gene results in multiple transcript variants. [provided by RefSeq, Jan 2012]

Product images:



Circular map for RC226771



Western blot validation of overexpression lysate (Cat# [LY428369]) using anti-DDK antibody (Cat# [TA50011-100]). Left: Cell lysates from untransfected HEK293T cells; Right: Cell lysates from HEK293T cells transfected with RC226771 using transfection reagent MegaTran 2.0 (Cat# [TT210002]).