

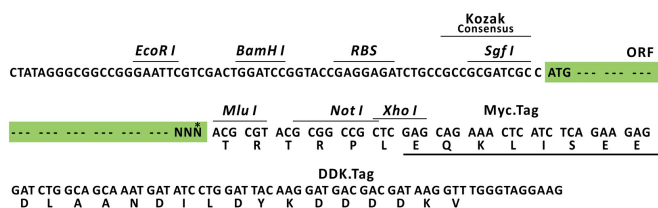
Product datasheet for RC226760L3

RNF185 (NM_001135825) Human Tagged Lenti ORF Clone

Product data:

Product Type:	Expression Plasmids
Product Name:	RNF185 (NM_001135825) Human Tagged Lenti ORF Clone
Tag:	Myc-DDK
Symbol:	RNF185
Mammalian Cell Selection:	Puromycin
Vector:	pLenti-C-Myc-DDK-P2A-Puro (PS100092)
E. coli Selection:	Chloramphenicol (34 ug/mL)
ORF Nucleotide Sequence:	The ORF insert of this clone is exactly the same as(RC226760).
Restriction Sites:	SgfI-MluI
Cloning Scheme:	

Cloning sites used for ORF Shuttling:



* The last codon before the Stop codon of the ORF.

ACCN: NM_001135825

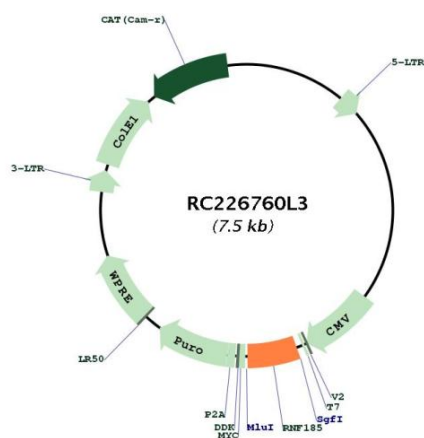
ORF Size: 408 bp



[View online »](#)

OTI Disclaimer:	The molecular sequence of this clone aligns with the gene accession number as a point of reference only. However, individual transcript sequences of the same gene can differ through naturally occurring variations (e.g. polymorphisms), each with its own valid existence. This clone is substantially in agreement with the reference, but a complete review of all prevailing variants is recommended prior to use. More info
OTI Annotation:	This clone was engineered to express the complete ORF with an expression tag. Expression varies depending on the nature of the gene.
Components:	The ORF clone is ion-exchange column purified and shipped in a 2D barcoded Matrix tube containing 10ug of transfection-ready, dried plasmid DNA (reconstitute with 100 ul of water).
Reconstitution Method:	<ol style="list-style-type: none"> 1. Centrifuge at 5,000xg for 5min. 2. Carefully open the tube and add 100ul of sterile water to dissolve the DNA. 3. Close the tube and incubate for 10 minutes at room temperature. 4. Briefly vortex the tube and then do a quick spin (less than 5000xg) to concentrate the liquid at the bottom. 5. Store the suspended plasmid at -20°C. The DNA is stable for at least one year from date of shipping when stored at -20°C.
RefSeq:	NM_001135825.1
RefSeq ORF:	411 bp
Locus ID:	91445
UniProt ID:	Q96GF1
Cytogenetics:	22q12.2
Protein Families:	Druggable Genome, Transmembrane
MW:	14 kDa
Gene Summary:	E3 ubiquitin-protein ligase that regulates selective mitochondrial autophagy by mediating 'Lys-63'-linked polyubiquitination of BNIP1 (PubMed:21931693). Acts in the endoplasmic reticulum (ER)-associated degradation (ERAD) pathway, which targets misfolded proteins that accumulate in the endoplasmic reticulum (ER) for ubiquitination and subsequent proteasome-mediated degradation (PubMed:27485036). Protects cells from ER stress-induced apoptosis (PubMed:27485036). Responsible for the cotranslational ubiquitination and degradation of CFTR in the ERAD pathway (PubMed:24019521). Preferentially associates with the E2 enzymes UBE2J1 and UBE2J2 (PubMed:24019521).[UniProtKB/Swiss-Prot Function]

Product images:



Circular map for RC226760L3