

Product datasheet for **RC226760**

RNF185 (NM_001135825) Human Tagged ORF Clone

Product data:

Product Type: Expression Plasmids
Product Name: RNF185 (NM_001135825) Human Tagged ORF Clone
Tag: Myc-DDK
Symbol: RNF185
Mammalian Cell Selection: Neomycin
Vector: pCMV6-Entry (PS100001)
E. coli Selection: Kanamycin (25 ug/mL)
ORF Nucleotide Sequence: >RC226760 representing NM_001135825
Red=Cloning site Blue=ORF Green=Tags(s)

TTTTGTAATACGACTCACTATAGGGCGGCCGGAATTCGTCGACTGGATCCGGTACCGAGGAGATCTGCC
GCC**CGATCGCC**

ATGGCAAGCAAGGGGCCCTCGGCCTCTGCATCTCTGAGAACTCCAGTGCAGGGGGGCCAGTGGGAGCA
GCAATGGCGCTGGCGAGAGCGGAGGGCAGGACAGCACTTTCGAGTGCAACATCTGCTTGGACACAGCCAA
GGATGCCGTATCAGCCTGTGTGGCCACCTCTTCTGTTGGCCGTGTTTACATCAGGGATTTCAAGGATTT
GGATTTGGAGATGGTGGCTTCCAGATGTCTTTTGAATTGGGGCATTTCCTTTGGGATATTTGCCACAG
CATTTAATAATAAATGATGGGCGGCCTCCTCCAGCTGCCCTGGGACACCCAGTATGTGGACGAGCAGTT
CCTGTCACGCCTCTTCTATTTGTGGCCCTGGTATCATGTTCTGGCTCCTGATTGCC

ACGCGTACGCGGCCGCTCGAGCAGAACTCATCTCAGAAGAGGATCTGGCAGCAAATGATATCCTGGATT
ACAAGGATGACGACGATAAGGTTTAA

Protein Sequence: >RC226760 representing NM_001135825
Red=Cloning site Green=Tags(s)

MASKGPSASASPENSSAGGSPSGSSNGAGESGGQDSTFECNICLDTAKDAVISLFCGHLFCWPCLHQGFQGF
GFGDGGFQMSFGIGAFPFIFATAFNINDGRPPPAVPGTPQYVDEQFLSRLFLFVALVIMFWLLIA

TRTRPLEQKLISEEDLAANDILDYKDDDDKV

Chromatograms: https://cdn.origene.com/chromatograms/ja1442_a03.zip

Restriction Sites: Sgfl-MluI



[View online »](#)

Cloning Scheme:


ACCN: NM_001135825

ORF Size: 408 bp

OTI Disclaimer: The molecular sequence of this clone aligns with the gene accession number as a point of reference only. However, individual transcript sequences of the same gene can differ through naturally occurring variations (e.g. polymorphisms), each with its own valid existence. This clone is substantially in agreement with the reference, but a complete review of all prevailing variants is recommended prior to use. [More info](#)

OTI Annotation: This clone was engineered to express the complete ORF with an expression tag. Expression varies depending on the nature of the gene.

Components: The ORF clone is ion-exchange column purified and shipped in a 2D barcoded Matrix tube containing 10ug of transfection-ready, dried plasmid DNA (reconstitute with 100 ul of water).

- Reconstitution Method:**
1. Centrifuge at 5,000xg for 5min.
 2. Carefully open the tube and add 100ul of sterile water to dissolve the DNA.
 3. Close the tube and incubate for 10 minutes at room temperature.
 4. Briefly vortex the tube and then do a quick spin (less than 5000xg) to concentrate the liquid at the bottom.
 5. Store the suspended plasmid at -20°C. The DNA is stable for at least one year from date of shipping when stored at -20°C.

RefSeq: [NM_001135825.2](#)

RefSeq ORF: 411 bp

Locus ID: 91445

UniProt ID: [Q96GF1](#)

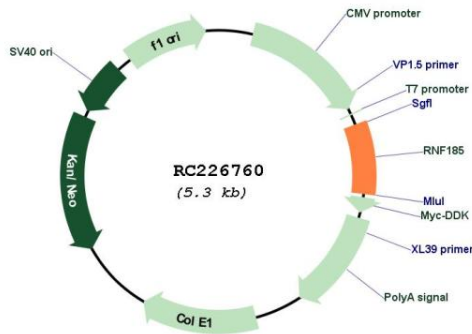
Cytogenetics: 22q12.2

Protein Families: Druggable Genome, Transmembrane

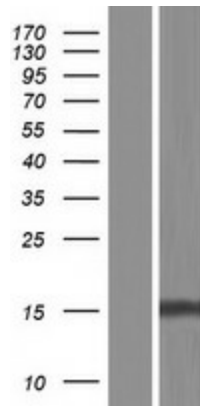
MW: 14 kDa

Gene Summary: E3 ubiquitin-protein ligase that regulates selective mitochondrial autophagy by mediating 'Lys-63'-linked polyubiquitination of BNIP1 (PubMed:21931693). Acts in the endoplasmic reticulum (ER)-associated degradation (ERAD) pathway, which targets misfolded proteins that accumulate in the endoplasmic reticulum (ER) for ubiquitination and subsequent proteasome-mediated degradation (PubMed:27485036). Protects cells from ER stress-induced apoptosis (PubMed:27485036). Responsible for the cotranslational ubiquitination and degradation of CFTR in the ERAD pathway (PubMed:24019521). Preferentially associates with the E2 enzymes UBE2J1 and UBE2J2 (PubMed:24019521).[UniProtKB/Swiss-Prot Function]

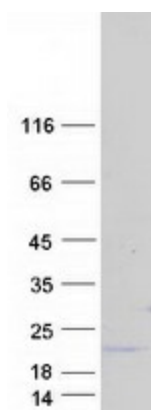
Product images:



Circular map for RC226760



Western blot validation of overexpression lysate (Cat# [LY427720]) using anti-DDK antibody (Cat# [TA50011-100]). Left: Cell lysates from untransfected HEK293T cells; Right: Cell lysates from HEK293T cells transfected with RC226760 using transfection reagent MegaTran 2.0 (Cat# [TT210002]).



Coomassie blue staining of purified RNF185 protein (Cat# [TP326760]). The protein was produced from HEK293T cells transfected with RNF185 cDNA clone (Cat# RC226760) using MegaTran 2.0 (Cat# [TT210002]).