

## Product datasheet for **RC226753**

### **SYCE1 (NM\_001143763) Human Tagged ORF Clone**

#### Product data:

**Product Type:** Expression Plasmids  
**Product Name:** SYCE1 (NM\_001143763) Human Tagged ORF Clone  
**Tag:** Myc-DDK  
**Symbol:** SYCE1  
**Synonyms:** C10orf94; CT76; POF12; SPGF15  
**Mammalian Cell Selection:** Neomycin  
**Vector:** pCMV6-Entry (PS100001)  
**E. coli Selection:** Kanamycin (25 ug/mL)  
**ORF Nucleotide Sequence:** >RC226753 representing NM\_001143763  
**Red=Cloning site Blue=ORF Green=Tags(s)**

TTTTGTAATACGACTCACTATAGGGCGGCCGGAATTCGTCGACTGGATCCGGTACCGAGGAGATCTGCC  
GCC**CGATCGCC**

ATGGCGGGGAGGTCCTGACATCGAAGGCCGAGCCACCGCAGGAGCCGTGGACAGGGCTGAGAAGGCCG  
GAGGGCAGGACACGTCTCACAGAAAATTGAAGACTTGATGGAATGGTGCAAAGCTGCAGAAAGTGGG  
AAGCCTAGAGCCCCGAGTTGAGGTCCTGATTAACCGGATTAATGAGGTCCAGCAAGCAAAAAGAAAGCC  
AATAAAGACCTAGGAGAGGCCCGACCATCTGTGAGGCCCTGCAGAAGGAACTGGACTCGCTGCATGGAG  
AGAAAGTACACCTGAAGGAGATCTTGAGCAAAAAACAAGAGACCCTGAGGATCCTCCGGTGCATTGCCA  
GGAAAAGGAAAGTGAGGCACACAGGAAGCACACCATGTTGCAGGAGTGCAAGGAGAGAATTTCTGCCCTG  
AACTTGCAGATTGAAGAAGAGAAGAACAACAGAGACAGCTGAGGTTGGCATTGAGGAACAGCTGGAAG  
ATCTGATGGGCCAGCACAAAGGACCTCTGGGACTTCCACATGCCAGAGCGGCTGGCAAAGGAGATTTGTGC  
CCTGGACAGCAGCAAGGAGCAGCTGCTCAAGGAAGAGAAGCTGGTCAAGGCGCACTGGAAGACGTGAAG  
CATCAGCTGTGCTCCCTGTGTGGGGCTGAGGGCCCTCCACCCTTGTGAGGGACTCTTTCTCCGCAGCC  
AGGAGGCTGCAGCCACAGTGCAGCTGTTTCAGGAAGAGCACAGGAAGGCTGAGGAGCTCCTAGCAGCTGC  
TGCCCAGCGCCACCAGCAGCTGCAGCAGAAGTGCCAACAACAGCAGCAGAAGCGGCAGAGGCTGAAGGAA  
GAGCTGGAAAAGCATGGAATGCAAGTCCCTGCCAAGCCAGAGCACACAAGAGGAAGAGGCTGGCCAG  
GAGATGTGGCTCCAGACCAGGTAGACCAGTGCATGGTGGAGT

**ACGCGT**ACGCGGCCGCTCGAGCAGAAACTCATCTCAGAAGAGGATCTGGCAGCAAATGATATCCTGGATT  
ACAAGGATGACGACGATAAGGTTTAA



[View online »](#)

**Protein Sequence:** >RC226753 representing NM\_001143763  
Red=Cloning site Green=Tags(s)

MAGRSLTSKAEP TAGAVDRAEKAGGQDTSSQKIEDLMEMVQKLQKVGSLPRVEVLINRINEVQQAKKKA  
 NKDLGEARTICEALQKELDSLHGEKVHLKEILSKKQETLRILRLHCQEKESEAHRRKHTMLQECKERISAL  
 NLQIEEEKNKQRQLRLAFEEQLLEDLMGQHKDLWDFHMPERLAKEICALDSSKEQLLKEEKLKATLEDVK  
 HQLCSL CGAEGPSTLDEGLFLRSQEAATAVQLFQEEHRKAEELLAAAAQRHQQLQKQCQQQQKQRQLKE  
 ELEKHGMQVPAQAQSTQEEEEAGPDVAPRPRPVTWWS

TRTRPLEQKLISEEDLAANDILDYKDDDDDKV

**Chromatograms:** [https://cdn.origene.com/chromatograms/mk8031\\_d11.zip](https://cdn.origene.com/chromatograms/mk8031_d11.zip)

**Restriction Sites:** SgfI-MluI

**Cloning Scheme:**

Cloning sites used for ORF Shuttling:



\* The last codon before the Stop codon of the ORF

**ACCN:** NM\_001143763

**ORF Size:** 954 bp

**OTI Disclaimer:** The molecular sequence of this clone aligns with the gene accession number as a point of reference only. However, individual transcript sequences of the same gene can differ through naturally occurring variations (e.g. polymorphisms), each with its own valid existence. This clone is substantially in agreement with the reference, but a complete review of all prevailing variants is recommended prior to use. [More info](#)

**OTI Annotation:** This clone was engineered to express the complete ORF with an expression tag. Expression varies depending on the nature of the gene.

**Components:** The ORF clone is ion-exchange column purified and shipped in a 2D barcoded Matrix tube containing 10ug of transfection-ready, dried plasmid DNA (reconstitute with 100 ul of water).

**Reconstitution Method:**

1. Centrifuge at 5,000xg for 5min.
2. Carefully open the tube and add 100ul of sterile water to dissolve the DNA.
3. Close the tube and incubate for 10 minutes at room temperature.
4. Briefly vortex the tube and then do a quick spin (less than 5000xg) to concentrate the liquid at the bottom.
5. Store the suspended plasmid at -20°C. The DNA is stable for at least one year from date of shipping when stored at -20°C.

**RefSeq:** [NM\\_001143763.1](#), [NP\\_001137235.1](#)

**RefSeq ORF:** 957 bp

**Locus ID:** 93426

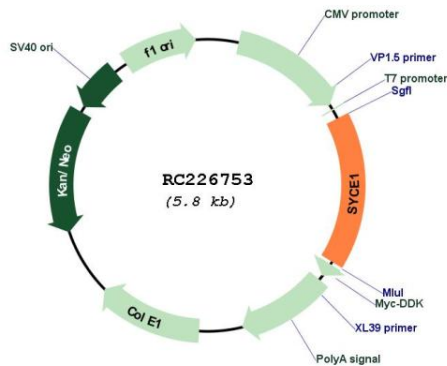
**UniProt ID:** [Q8N0S2](#)

**Cytogenetics:** 10q26.3

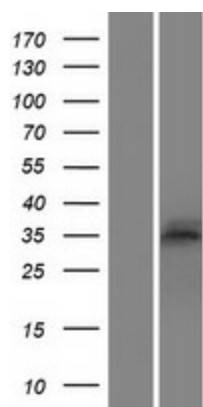
**MW:** 36.1 kDa

**Gene Summary:** This gene encodes a member of the synaptonemal complex, which links homologous chromosomes during prophase I of meiosis. The tripartite structure of the complex is highly conserved amongst metazoans. It consists of two lateral elements and a central region formed by transverse elements and a central element. The protein encoded by this gene localizes to the central element and is required for initiation and elongation of the synapsis. Allelic variants of this gene have been associated with premature ovarian failure and spermatogenic failure. Alternative splicing results in multiple transcript variants. [provided by RefSeq, Nov 2016]

### Product images:



Circular map for RC226753



Western blot validation of overexpression lysate (Cat# [LY428328]) using anti-DDK antibody (Cat# [TA50011-100]). Left: Cell lysates from untransfected HEK293T cells; Right: Cell lysates from HEK293T cells transfected with RC226753 using transfection reagent MegaTran 2.0 (Cat# [TT210002]).