

Product datasheet for RC226750

SIRPB1 (NM_001135844) Human Tagged ORF Clone

Product data:

Product Type: Expression Plasmids
Product Name: SIRPB1 (NM_001135844) Human Tagged ORF Clone
Tag: Myc-DDK
Symbol: SIRPB1
Synonyms: CD172b; SIRP-BETA-1
Mammalian Cell Selection: Neomycin
Vector: pCMV6-Entry (PS100001)
E. coli Selection: Kanamycin (25 ug/mL)
ORF Nucleotide Sequence: >RC226750 representing NM_001135844
 Red=Cloning site Blue=ORF Green=Tags(s)

TTTTGTAATACGACTCACTATAGGGCGGCCGGAATTCGTCGACTGGATCCGGTACCGAGGAGATCTGCC
 GCC**CGATCGCC**

ATGCCCGTGCCAGCCTCCTGGCCCCACCTTCTAGTCCTTCTGCTGATGACGCTACTGCTGGGGAGAC
 TCACAGGAGTGGCAGGTGAGGACGAGCTACAGGTGATTCAGCCTGAAAAGTCCGTATCAGTTGCAGCTGG
 AGAGTCGGCCACTCTGTGCTGTGCTATGACGTCCCTGATCCCTGTGGGGCCCATCATGTGGTTTAGAGGA
 GCTGGAGCAGGCCGGAATTAATCTACAATCAGAAAGAAGGCCACTTCCCACGGTAACAACCTGTTTCAG
 AACTCACAAAGAGAAACAACCTGGACTTTCCATCAGCATCAGTAACATCACCCAGCAGACGCCGGCAC
 CTACTACTGTGTGAAGTTCGGAAAGGGAGCCCTGACGACGTGGAGTTTAAAGTCTGGAGCAGGCACTGAG
 CTGTCTGTGCGGCCAAACCCCTCTGCCCCGTTGATCGGGCCCTGCGGTGAGGGCCACACCTGAGCACA
 CAGTGAGCTTACCTGCGAGTCCATGGCTTCTCTCCAGAGACATCACCTGAAATGGTTCAAAAATGG
 GAATGAGCTCTCAGACTTCCAGACCAACGTGGACCCCGCAGGAGACAGTGTCTTACAGCATCCACAGC
 ACAGCCAGGGTGGTGCTGACCCGTGGGACGTTCACTCTCAAGTCATCTGCGAGATGGCCACATCACCT
 TGCAGGGGACCCCTTCTCGTGGGACTGCCAACTGTCTGAGGCCATCCGAGTTCACCCACCTTGGAGGT
 TACTCAACAGCCCATGAGGGCAGAGAACCAGGCAACGTCACCTGCCAGGTGAGCAATTTCTACCCCGG
 GGACTACAGCTGACCTGGTTGGAGAATGGAATGTGCCGGACAGAAACAGCTTCGACCCTCATAGAGA
 ACAAGGATGGCACCTACAACCTGGATGAGCTGGCTCCTGGTGAACACCTGTGCCACAGGGACGATGTGGT
 GCTCACCTGTGAGGTGGAGCATGATGGGACGAAGCAGTCAGCAAAAGCTATGCCCTGGAGATCTCAGCA
 CACCAGAAGGAGCACGGCTCAGATATCACCCATGAACCAGCGCTGGCTCCTACTGCTCCACTCCTCGTAG
 CTCTCCTCCTGGGCCCAAGCTGCTACTGGTGGTTGGTGTCTCTGCCATCTACATCTGCTGGAAACAGAA
 GGCC

ACGCGTACGCGGCCGCTCGAGCAGAACTCATCTCAGAAGAGGATCTGGCAGCAATGATATCCTGGATT
 ACAAGGATGACGACGATAAGGTTTAA



Protein Sequence: >RC226750 representing NM_001135844
Red=Cloning site Green=Tags(s)

MPVPASWPHLPSFLLMTLLGRLTGVAGEDELQVIQPEKSVSVAAGESATLCCAMTSLIPVGPIMWFRG
 AGAGRELIYNQKEGHFPRVTTVSELTKRNLDIFSISINITPADAGTYCVKFRKGPDDVEFKSGAGTE
 LSVRAKPSAPVVSQPAVRATPEHTVSFTCESHGFSRPRDITLKWFKNGNELSDFQTNVDPAGDSVSYSIHS
 TARVVLTRGDVHSQVICEMAHITLQGDPLRGTANLSEAIRVPTLEVTQQPMPRAENQANVTCQVSNFYPR
 GLQLTWLENGVSRTEASTLIENKDGTYNWMWLLVNTCAHRDDVVLTCQVEHDGQQAVSKSYALEISA
 HQKEHGS DITHEPALAPTAPLLVALLLGPKLLL VVGVS A I Y I C W K Q K A

TRTRPLEQKLISEEDLAANDILDYKDDDDKV

Chromatograms: https://cdn.origene.com/chromatograms/mk6492_c09.zip

Restriction Sites: SgfI-MluI

Cloning Scheme:



* The last codon before the Stop codon of the ORF

ACCN: NM_001135844

ORF Size: 1194 bp

OTI Disclaimer: The molecular sequence of this clone aligns with the gene accession number as a point of reference only. However, individual transcript sequences of the same gene can differ through naturally occurring variations (e.g. polymorphisms), each with its own valid existence. This clone is substantially in agreement with the reference, but a complete review of all prevailing variants is recommended prior to use. [More info](#)

OTI Annotation: This clone was engineered to express the complete ORF with an expression tag. Expression varies depending on the nature of the gene.

Components: The ORF clone is ion-exchange column purified and shipped in a 2D barcoded Matrix tube containing 10ug of transfection-ready, dried plasmid DNA (reconstitute with 100 ul of water).

Reconstitution Method:

1. Centrifuge at 5,000xg for 5min.
2. Carefully open the tube and add 100ul of sterile water to dissolve the DNA.
3. Close the tube and incubate for 10 minutes at room temperature.
4. Briefly vortex the tube and then do a quick spin (less than 5000xg) to concentrate the liquid at the bottom.
5. Store the suspended plasmid at -20°C. The DNA is stable for at least one year from date of shipping when stored at -20°C.

RefSeq ORF: 1197 bp

Locus ID: 10326

UniProt ID: [Q5TFQ8](#)

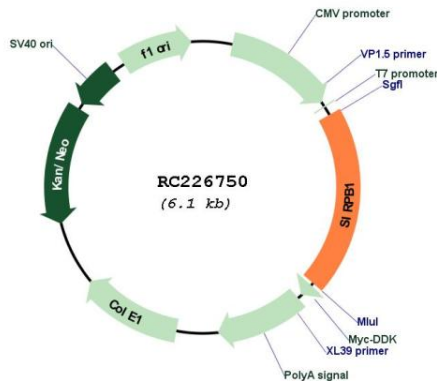
Cytogenetics: 20p13

Protein Families: Druggable Genome, Transmembrane

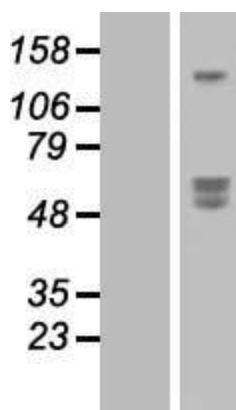
MW: 43.2 kDa

Gene Summary: The protein encoded by this gene is a member of the signal-regulatory-protein (SIRP) family, and also belongs to the immunoglobulin superfamily. SIRP family members are receptor-type transmembrane glycoproteins known to be involved in the negative regulation of receptor tyrosine kinase-coupled signaling processes. This protein was found to interact with TYROBP/DAP12, a protein bearing immunoreceptor tyrosine-based activation motifs. This protein was also reported to participate in the recruitment of tyrosine kinase SYK. Multiple transcript variants encoding different isoforms have been found for this gene. [provided by RefSeq, Feb 2009]

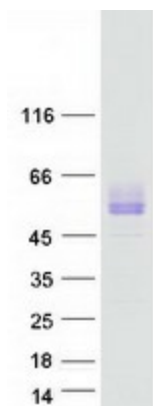
Product images:



Circular map for RC226750



Western blot validation of overexpression lysate (Cat# [LY427721]) using anti-DDK antibody (Cat# [TA50011-100]). Left: Cell lysates from untransfected HEK293T cells; Right: Cell lysates from HEK293T cells transfected with RC226750 using transfection reagent MegaTran 2.0 (Cat# [TT210002]).



Coomassie blue staining of purified SIRPB1 protein (Cat# [TP326750]). The protein was produced from HEK293T cells transfected with SIRPB1 cDNA clone (Cat# RC226750) using MegaTran 2.0 (Cat# [TT210002]).