

Product datasheet for RC226749

KCP (NM_001135914) Human Tagged ORF Clone

Product data:

Product Type: Expression Plasmids
Product Name: KCP (NM_001135914) Human Tagged ORF Clone
Tag: Myc-DDK
Symbol: KCP
Synonyms: CRIM2; KCP1; NET67
Mammalian Cell Selection: Neomycin
Vector: pCMV6-Entry (PS100001)
E. coli Selection: Kanamycin (25 ug/mL)
ORF Nucleotide Sequence: >RC226749 representing NM_001135914
 Red=Cloning site Blue=ORF Green=Tags(s)

TTTTGTAATACGACTCACTATAGGGCGGCCGGAATTCGTCGACTGGATCCGGTACCGAGGAGATCTGCC
 GCC**CGATCGCC**

ATGGCCGGGGTCGGGGCCGCTGCGCTGTCCCTTCTCCTGCACCTCGGGGCCCTGGCGCTGGCCGCGGGCG
 CGGAAGGTGGGGCTGTCCCAGGGAGCCCCCTGGGCAGCAGACAAGTCCCATTCCTCAGTCCTTGTCTG
 GAACTCCCAGGAGCAGTGGCACCCCTGCGAGAGTGGCTGGGGCGACTGGAGGCTGCAGTGATGGAGCTC
 AGAGAACAGAATAAGGACCTGCAGACGAGGGTGGGCAGCTGGAGTCTGTGAGTGCCACCCTGCATCTC
 CCCAGTGTGGGGCTGGGGCGTGCCTGGCCCCAGGGGGCACGCTGGGAGCCTGACGCTGCACAGCCTG
 CGTCTGCCAGGATGGGGCCGCTCACTGTGCCCCCAAGCACACCTGCCCATTCAGGGGCTGCAGCCAA
 AATGGCCAGACCTACGGCAACGGGGAGACCTTCTCCCCAGATGCCTGCACCACCTGCCGCTGTCTGACAG
 GAGCCGTGCAGTGCCAGGGGCCCTCGTGTTCAGAGCTCAACTGCTTGGAGAGCTGCACCCACCTGGGGA
 GTGCTGCCCATCTGCTGCACAGAAGGTGGCTCTCACTGGGAACATGGCCAAGAGTGGACAACACCTGGG
 GACCCCTGCCGAATCTGCCGGTGCCTGGAGGTCACATCCAGTCCGCGCCAGCGAGAATGTGCCAGCCTGT
 GTCCATACCCAGCCCGGCCCTCCCAGGCACCTGCTGCCCTGTGTGTGATGGCTGTTTCTAAACGGGGC
 GGAGCACCGCAGCGGGGAGCCTGTGGCTCAGGGGACCCCTGCTGCACTGCCGCTGTGCTAATGGGAGT
 GTCCAGTGTGAGCCTCTGCCCTGCCCGCAGTGCCTGCAGACACCCAGGCAAGATCCCTGGGCAGTGT
 GCCCTGTCTGCGATGGCTGTGAGTACCAGGGACACCAGTATCAGAGCCAGGAGACCTTCAGACTCCAAGA
 GCGGGGCCCTGTGTCCGCTGCTCCTGCCAGGCTGGCGAGGTCTCCTGTGAGGAGCAGGAGTGCCAGTC
 ACCCCCTGTGCCCTGCCTCTGGCCGCCAGCTCTGCCAGCCTGTGAGCTGGATGGAGAGGAGTTTG
 CTGAGGGAGTCCAGTGGGAGCCTGATGGTGGCCCTGCACCGCCTGCGTCTGTCAAGATGGGGTACCCAA
 GTGCGGGGCTGTGCTCTGCCCCAGCCCCCTGCCAGCACCCACCCAGCCCCCTGGTGCCTGTGCCCC
 AGCTGTGACAGCTGCACCTACCACAGCCAAGTGTATGCCAATGGGCAGAAGTTCACGGATGCAGACAGCC
 CTTGCCATGCCTGCCACTGTCAGGATGGAAGTGTGACATGCTCCTTGGTTGACTGCCCTCCACAGCCTG
 TGCCAGGCCCCAGAGTGGACCAGGCCAGTGTGCCCCAGGTGCCAGACTGCATCCTGGAGGAAGAGGTTG



[View online »](#)

TTTGTGGACGGCGAGAGCTTCTCCACCCCGAGACCCCTGCCAGGAGTGCCGATGCCAGGAAGGCCATG
 CCCACTGCCAGCCTCGCCCTGCCCCAGGGCCCTGTGCCACCCGCTGCCTGGGACCTGCTGCCGAA
 CGACTGCAGCGGCTGTGCCTTTGGCGGAAAGAGTACCCAGCGGAGCGGACTTCCCCACCCCTGTAC
 CCCTGCCGTCTGTGTGCTGTCTGAGCGGCAACGTGCAGTGCCTGGCCCGCCGCTGCGTGCCGCTGCCCT
 GTCCAGAGCCTGTCTGTGCCGGGAGAGTGTGCCCGCAGTGCCAGCCCCGCCGGTGCCACGGCC
 CGCGCGGCCACGCCCCACCAGGAGTACTTCTCCCCGCCGCGATCCCTGCCGCCGTGCCCTGTG
 CTCGAGCGCTCCGTGCTGCCAGCGGCTGCCCTGCCCGCCCGCCCTGCCGCGACCCGCGCCAGGGG
 CTTGCTGCCCCCTCTGCGACGGCTGCCTGTACCAGGGGAAGGAGTTTGCCAGCGGGGAGCGCTTCCATC
 GCCCACTGCTGCCTGCCACCTCTGCCTTTGCTGGGAGGGCAGCGTGAGCTGCGAGCCCAAGGCATGTGCC
 CCTGCACTGTGCCCTTCCCTGCCAGGGGCGACTGCTGCCCTGACTGTGATGGCTGTGAGTACCTGGGG
 AGTCTACCTGAGTAACCAGGAGTTCCAGACCCCGAGAACCCTGCAACCTGTGTACCTGTCTTGAGG
 CTTGCTGACCTGCGGCCCGCCGCTGTGAGCCTCCGGGCTGCAGCCACCACTCATCCCCTCTGGGAC
 TGCTGCCGACCTGCCAGGGATGCCGTACCATGGCGTCACTACTGCCTCCGGAGAGACCCTTCTGACC
 CACTTGACCCTACCTGTCCCTCTGCACCTGCCAGGAAGTTCCATGCGCTGCCAGAAGAAGCCATGTCC
 CCCAGCTCTGTCCCCACCCCTCTCCAGGCCCTGCTTCTGCCCTGTTTGCCACAGCTGTCTCTCAG
 GGCCGGGAGCACCAGGATGGGGAGGAGTTGAGGGACCAGCAGGAGCTGTGAGTGGTGTGCTGTGAGG
 CTGGCCAGGTGAGCTGTGTGCGGCTGCAGTGCCACCCCTTCCCTGCAAGCTCCAGGTACCCGAGCGGG
 GAGCTGTGCCCTCGCTGCAGAGGCTGCCTGGCTCATGGGGAAGAGCACCCGAAGGCAGTAGATGGGTG
 CCCCCGACAGTGCTGTCTCCTGTGTGTGTCACGAGGGCGTGTGACCTGTGCACGCATCCAGTGCA
 TCAGCTTTGCGCCAGCCCCGCAAGGGCCCCATGACTGCTGTCTCAATGCTCTGACTGTGAGCATGA
 GGGCCGGAAGTACGAGCCTGGGGAGAGCTTCCAGCCTGGGGCAGACCCCTGTGAAGTGTGCATCTGCGAG
 CCACAGCCTGAGGGGCTCCAGCCTTCCGTGTACCCGGCGCAGTGTCCAGCCTGGTGGGCTGCCCTT
 CAGCAGCTCCTGCCCTGGGCCCCAGCAGTGTGCCACCTGTGCCAGGCCCTTGAAGTAACTGTTT
 AGAGGGCCTGCTGGGATCTGAGCTAGCCCCACCAGACCCCTGCTACACGTGCCAGTGCCAGGACCTGACA
 TGCTCTGCATCCACCAGGCTTGTCTGAGCTCAGCTGTCCCCTCTCAGAGCGCCACACTCCCCCTGGGA
 GCTGTGCCCGTATGCCGGGCTCCCACCCAGTCTGCGTGCACCAGGGCCGTGAGGTGGCTCTGGAGA
 GCGCTGGACTGTGGACACCTGCACCAGTGTCTCTGCATGGCGGGCACCCTGCGTTGCCAGAGCCAGCGC
 TGCTCACCGTCTCGTGTGGCCCCGACAAGGCCCTGCCCTGAGTCTGGCAGCTGTGCCCGCTGCC
 TGCTCGGCCGCTTCTGCATGGCCTTCGAGACCCCAATTACCGCACCTTCGACGGCCGCTGTGCA
 CTTCCAGGGCAGTTGCAGCTATGTGTGGCCAAGGACTGCCACAGCGGGACTTCAGTGTGCACGTGACC
 AATGATGACCGGGCCGAGCGGTGTGGCTGGACCCAGGAGGTGGCGGTGCTGTGGGAGACATGGCCG
 TCGGGCTGCTGCAGGACGGGGCAGTACCGTGGATGGGCACCCGGTGGCCTTGCCCTTCTGCAGGAGCC
 GCTGCTGTATGTGGAGCTGCGAGGACACACTGTGATCCTGCACGCCAGCCCGGGCTCCAGGTGCTGTGG
 GATGGGCAGTCCCAGGTGGAGGTGAGCGTACCTGGCTCCTACCAGGGCCGGACTTGTGGGCTCTGTGGGA
 ACTTCAATGGCTTTGCCAGGACGATCTGCAGGGCCCTGAGGGGCTGCTCCTGCCCTCGGAGGCTGCGTT
 TGGGAATAGCTGGCAGGTCTCAGAGGGGCTGTGGCCTGGCCGGCCCTGTTCTGCAGGCCGAGAGGTGGAT
 CCGTGCCGGGCAGCAGGTTACCGTGCCAGGCGTGAGGCCAATGCCCGGTGTTGGGTGCTGAAGTCTCCC
 CATTGAGTGCCTGCCATGCTGTGGTGCACCCGGAGCCCTTCTTTGCCCTGTGTATGACCTGTGTGC
 CTGTGGCCCTGGCTCCTCCGCTGATGCCTGCCTGTGATGCCCTGGAAGCCTACGCCAGTCACTGTGCG
 CAGGCAGGAGTGACACCTACCTGGCGAGGCCCCACGCTGTGTGTTGGTGGCTGCCCTGGAGCGTGGCT
 TCGTGTGTTGATGAGTGGGCCACCCTGTCCCCGACCTGCTTCAATCAGCATATCCCCCTGGGGGAGCT
 GGCAGCCCACTGCGTGAGGCCCTGCGTGCCCGGCTGCCAGTGCCTGCAGGCCTGGTGGAGCATGAGGCC
 CACTGCATCCCACCCGAGGCTGCCCAAGTCTGCTCACTGGAGACCAGCCACTTGGTGTGCGGCCA
 GCCCAGCCGGGAGCCCCAGGAGACACC

ACGCGTACGCGGCCGCTCGAGCAGAACTCATCTCAGAAGAGGATCTGGCAGCAATGATATCCTGGATT
 ACAAGGATGACGACGATAAGGTTTAA

Protein Sequence: >RC226749 representing NM_001135914
 Red=Cloning site Green=Tags(s)

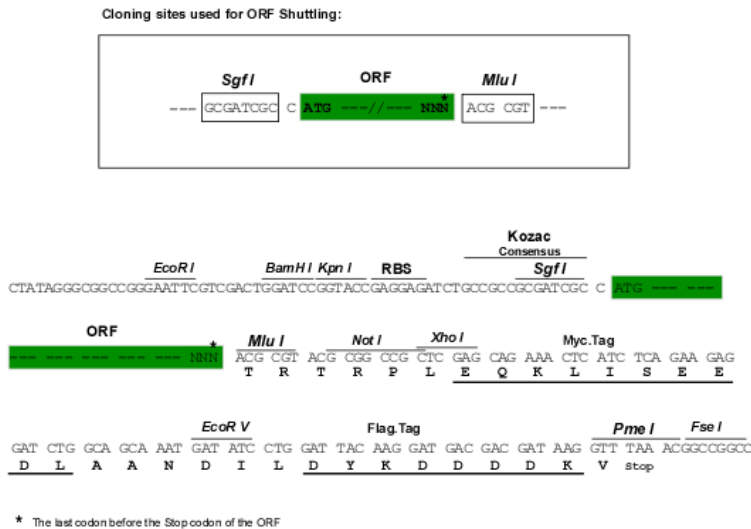
MAGVGAALSLLLHLGALALAAGAEGGAVPREPPGQTTAHSVLAGNSQEQWHPLREWLGRLEAAVMEL
 REQNKDLQTRVRQLESCECHPASPQCWGLGRAWPEGARWEPDACTACVCQDGAHCGPQAHLPKCRGCSQ
 NGQTYNGETTFSPDACTTCRCLTGAVQCQGPSCSELNCLSECTPPGECCPICCTEGGSHWEHQEWTPG
 DPCRICRCLGHIQCRQRECAASCPYPARPLPGTCCPVCQDGCFLNGREHRSGEVPGSGDPCSHCRCANGS
 VQCEPLPCPPVPCRHPGKIPGQCCPVCDGCEYQGHQYQSQETFRLQERGLCVRCSQAGEVSCCEEQPCV
 TPCALPASGRQLCPACELDGEFAEGVQWEPDGRPCTACVCQDGVKCGAVLCPAPCQHPTQPPGACCP
 SCDSCTYHSQVYANGQNFDTADSPCHACHCQDGTVTCSLVDCPPTTCARPQSGPGQCCPRCPDCILEEEV
 FVDGESFSHPRDPCECQCQEGHAHCQPRPCPRAPCAHPLPGTCCPNDCSGCAFQGGKEYPSGADFPHPSD
 PCRLCRCLSGNVQCLARRCVPLPCPEPVLLPGECCQCPAPAGCPRPGAHAHRHQEYFSPGDPCCRCLC
 LDGVSVCQRLPCPPAPCAHPRQGPCCPSCDGCLYQKFAASGERFSPPTAACHLCLCWEGSVSCEPKACA
 PALCPFPARGDCCPDGCEYLGEYLSNQEFDPREPCNLCTCLGGFVTCGRRPCEPPGCSHPLIPSGH
 CCPTCQGCYRHGVTASGETLPDPLDPTCSLCTCQEGSMRCQKPCPPALCPHPSPGPFPCPVCHSCLSQ
 GREHQDGEFEFGPAGSCEWCRCQAGQVSCVRLQCPPLPCKLQVTERGSCCPRCRGCLAHGEEHPEGSRWV
 PPDASCSVCHEGVVTCARIQCISSCAQPRQPHDCCPQCSDCHEGRKYEPGESFQPGADPCEVCICE
 PQPEGPPSLRCHRRQCPSLVGCPPSLLPQGGPQHCCPTCAEALSNCSEGLLGSELAPPDPCYTCQCDLT
 WLCIHQACPELSCPLSERHTPPGSCCPVCRAPTQSCVHQGREVASGERWTVDTCTSCSCMAGTVRCQSQR
 CSPLSCGPDKAPALSPGSCCPRCLPRPASCMAFGDPHYRTFDGRLLHFQGCSSYVLAKDCHSGDFSVHVT
 NDDRGRSGVAWTQEVAVLLGDMAVRLLQDGAVTVDGHPVALPFLQEPLLVELRGHTVILHAQPLQLVW
 DGQSQVEVSVPGSYQGRTCGLCGNFNGFAQDDLQGPGLLLPSEAAFNSWQVSEGLWPGRPCAGREVD
 PCRAAGYRARRREANARCGVLKSSPFSRCHAVVPEPFFAACVYDLACGPGSSADAACDALEYASHCR
 QAGVPTWRGPTLCVVGCPLEGRFVFDECGPPCPRCTCFNQHIPLGELAAHCVRPCVPGCQCPAGLVEHEA
 HCIPPEACPQVLLTGDQPLGARSPSREPQETP

TRTRPLEQKLISEEDLAANDILDYKDDDDKV

Chromatograms: https://cdn.origene.com/chromatograms/mk8031_d12.zip

Restriction Sites: SgfI-MluI

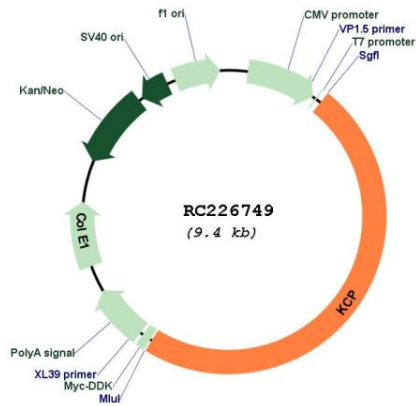
Cloning Scheme:



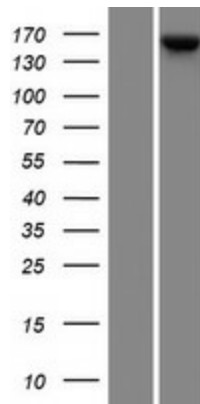
ACCN: NM_001135914

ORF Size:	4509 bp
OTI Disclaimer:	The molecular sequence of this clone aligns with the gene accession number as a point of reference only. However, individual transcript sequences of the same gene can differ through naturally occurring variations (e.g. polymorphisms), each with its own valid existence. This clone is substantially in agreement with the reference, but a complete review of all prevailing variants is recommended prior to use. More info
OTI Annotation:	This clone was engineered to express the complete ORF with an expression tag. Expression varies depending on the nature of the gene.
Components:	The ORF clone is ion-exchange column purified and shipped in a 2D barcoded Matrix tube containing 10ug of transfection-ready, dried plasmid DNA (reconstitute with 100 ul of water).
Reconstitution Method:	<ol style="list-style-type: none">1. Centrifuge at 5,000xg for 5min.2. Carefully open the tube and add 100ul of sterile water to dissolve the DNA.3. Close the tube and incubate for 10 minutes at room temperature.4. Briefly vortex the tube and then do a quick spin (less than 5000xg) to concentrate the liquid at the bottom.5. Store the suspended plasmid at -20°C. The DNA is stable for at least one year from date of shipping when stored at -20°C.
RefSeq:	NM_001135914.1 , NP_001129386.1
RefSeq ORF:	4512 bp
Locus ID:	375616
UniProt ID:	Q6ZWI8
Cytogenetics:	7q32.1
MW:	159.8 kDa
Gene Summary:	Enhances bone morphogenetic protein (BMP) signaling in a paracrine manner. In contrast, it inhibits both the activin-A and TGF β 1-mediated signaling pathways (By similarity). [UniProtKB/Swiss-Prot Function]

Product images:



Circular map for RC226749



Western blot validation of overexpression lysate (Cat# [LY427728]) using anti-DDK antibody (Cat# [TA50011-100]). Left: Cell lysates from untransfected HEK293T cells; Right: Cell lysates from HEK293T cells transfected with RC226749 using transfection reagent MegaTran 2.0 (Cat# [TT210002]).