

Product datasheet for **RC226740**

KCTD1 (NM_001136205) Human Tagged ORF Clone

Product data:

Product Type:	Expression Plasmids
Tag:	Myc-DDK
Symbol:	KCTD1
Synonyms:	C18orf5
Mammalian Cell Selection:	Neomycin
Vector:	pCMV6-Entry (PS100001)
E. coli Selection:	Kanamycin (25 ug/mL)
ORF Nucleotide Sequence:	>RC226740 ORF sequence Red=Cloning site Blue=ORF Green=Tags(s)

TTTTGTAATACGACTCACTATAGGGCGGCCGGAATTCGTCGACTGGATCCGGTACCGAGGAGATCTGCC
 GCC**CGATCGCC**

ATGTCAAGACCTCTGATCACTAGATCCCCTGCATCTCCACTGAACAACCAAGGCATCCCTACTCCAGCAC
 AACTCACAAAATCCAATGCACCTGTCCACATTGATGTGGGCGGCCACATGTACACCAGCAGCCTGGCCAC
 CCTCACCAAATACCCTGAATCCAGAATCGGAAGACTTTTTGATGGTACAGAGCCATTGTTTTGGACAGT
 CTCAAACAGCACTATTTTCATTGACAGAGATGGACAGATGTTTCAGATATATCTTGAATTTCTACGAACAT
 CCAAACCTCCTCATTCTGATGATTTCAAGGACTACACTTTGTTATATGAAGAGGCAAAATATTTTCAGCT
 TCAGCCCATGTTGTTGGAGATGGAAGATGGAAGCAGGACAGAGAACTGGTCGATTTTCAAGGCCCTGT
 GAGTGCCTCGTCGTGCGTGTGGCCCAGACCTCGGAGAAAGGATCACGCTAAGCGGTGACAAATCCTTGA
 TAGAAGAAGTATTTCCAGAGATCGGCGACGTGATGTGTAACCTCTGTCAATGCAGGCTGGAATCACGACTC
 GACGCACGTATCAGGTTTCCACTAAATGGCTACTGTACCTCAACTCAGTCCAGGTCTCGAGAGGTTG
 CAGCAAAGAGGATTTGAAATCGTGGGCTCCTGTGGGGAGGAGTAGACTCGTCCAGTTCAGCGAATACG
 TCCTTCGGCGGGAAGTGAAGCGGACGCCCCGTGTACCCTCCGTCATCCGGATAAAGCAAGAGCCTCTGGA
 C

ACGCGTACGCGGCCGCTCGAGCAGAAACTCATCTCAGAAGAGGATCTGGCAGCAAATGATATCCTGGATT
 ACAAGGATGACGACGATAAGGTTTAA


[View online »](#)

Protein Sequence: >RC226740 protein sequence
 Red=Cloning site Green=Tags(s)

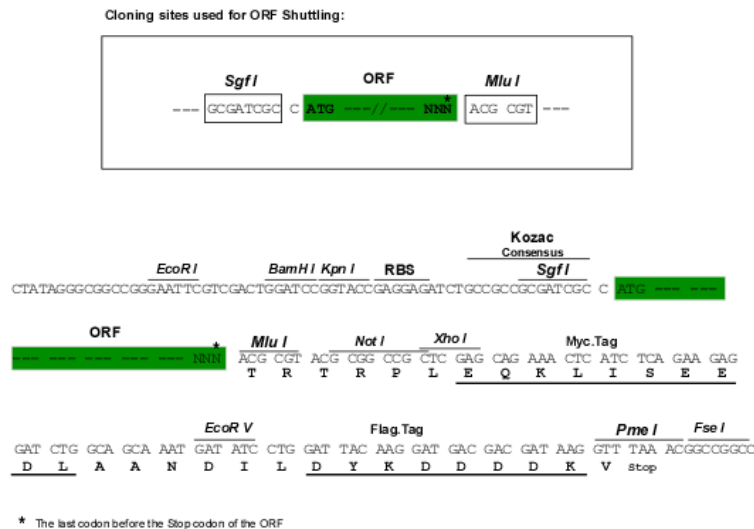
MSRPLITRSPASPLNNQGIPTPAQLTKSNAPVHIDVGGHMYTSSLATLTKYPESRIGRLFDGTEPIVLDS
 LKQHYFIDRDGQMFRYILNFLRTSKLLIPDDFKDYTLLEYEAKYFQLQPMLEMERWKQDRETGRFSRPC
 ECLVVRVAPDLGERITLSGDKSLIEEVFPEIGDVMCNSVNAGWNHDSHVIRFPLNGYCHLNSVQVLERL
 QQRGFEIVGSCGGVDSSQFSEYVLRRELRRTPRVPVIRIKQEPLD

TRTRPLEQKLISEEDLAANDILDYKDDDDKV

Chromatograms: https://cdn.origene.com/chromatograms/mk6455_b01.zip

Restriction Sites: SgfI-MluI

Cloning Scheme:



ACCN: NM_001136205

ORF Size: 771 bp

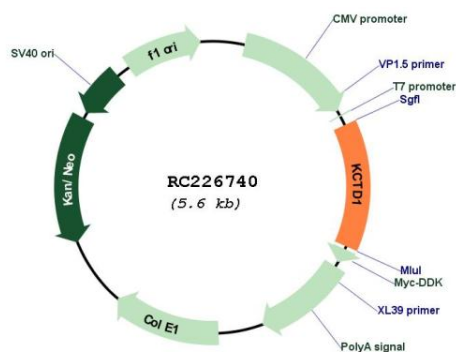
OTI Disclaimer: The molecular sequence of this clone aligns with the gene accession number as a point of reference only. However, individual transcript sequences of the same gene can differ through naturally occurring variations (e.g. polymorphisms), each with its own valid existence. This clone is substantially in agreement with the reference, but a complete review of all prevailing variants is recommended prior to use. [More info](#)

OTI Annotation: This clone was engineered to express the complete ORF with an expression tag. Expression varies depending on the nature of the gene.

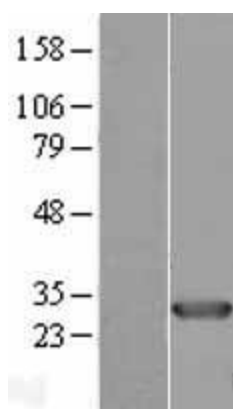
Components: The ORF clone is ion-exchange column purified and shipped in a 2D barcoded Matrix tube containing 10ug of transfection-ready, dried plasmid DNA (reconstitute with 100 ul of water).

Reconstitution Method:	<ol style="list-style-type: none"> 1. Centrifuge at 5,000xg for 5min. 2. Carefully open the tube and add 100ul of sterile water to dissolve the DNA. 3. Close the tube and incubate for 10 minutes at room temperature. 4. Briefly vortex the tube and then do a quick spin (less than 5000xg) to concentrate the liquid at the bottom. 5. Store the suspended plasmid at -20°C. The DNA is stable for at least one year from date of shipping when stored at -20°C.
Note:	Plasmids are not sterile. For experiments where strict sterility is required, filtration with 0.22um filter is required.
RefSeq:	<u>NM_001136205.2, NP_001129677.1</u>
RefSeq Size:	2174 bp
RefSeq ORF:	774 bp
Locus ID:	284252
UniProt ID:	<u>Q719H9</u>
Cytogenetics:	18q11.2
Protein Families:	Ion Channels: Other
MW:	29.4 kDa
Gene Summary:	<p>This gene encodes a protein containing a BTB (Broad-complex, tramtrack and bric a brac), also known as a POZ (POxvirus and zinc finger) protein-protein interaction domain. The encoded protein negatively regulates the AP-2 family of transcription factors and the Wnt signaling pathway. A mechanism for the modulation of Wnt signaling has been proposed in which the encoded protein enhances ubiquitination and degradation of the beta-catenin protein. Mutations in this gene have been identified in Scalp-ear-nipple (SEN) syndrome. [provided by RefSeq, May 2017]</p>

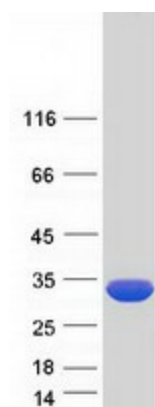
Product images:



Circular map for RC226740



Western blot validation of overexpression lysate (Cat# [LY427853]) using anti-DDK antibody (Cat# [TA50011-100]). Left: Cell lysates from untransfected HEK293T cells; Right: Cell lysates from HEK293T cells transfected with RC226740 using transfection reagent MegaTran 2.0 (Cat# [TT210002]).



Coomassie blue staining of purified KCTD1 protein (Cat# [TP326740]). The protein was produced from HEK293T cells transfected with KCTD1 cDNA clone (Cat# RC226740) using MegaTran 2.0 (Cat# [TT210002]).