

Product datasheet for RC226729

OTUD5 (NM_001136159) Human Tagged ORF Clone

Product data:

| | |
|---------------------------|--|
| Product Type: | Expression Plasmids |
| Product Name: | OTUD5 (NM_001136159) Human Tagged ORF Clone |
| Tag: | Myc-DDK |
| Symbol: | OTUD5 |
| Synonyms: | DUBA; MCAND |
| Mammalian Cell Selection: | Neomycin |
| Vector: | pCMV6-Entry (PS100001) |
| E. coli Selection: | Kanamycin (25 ug/mL) |
| ORF Nucleotide Sequence: | >RC226729 representing NM_001136159 Red=Cloning site Blue=ORF Green=Tags(s) |

TTTTGTAATACGACTCACTATAGGGCGGCCGGAATTCGTCGACTGGATCCGGTACCGAGGAGATCTGCC
GCC**CGATCGCC**

ATGAAGGAGGATGGCGCCTGTCTCTCCGGGCTGTAGCTGACCAGGTGTATGGAGACCAGGACATGCATG
AGGTTGTGCGAAAGCATTGCATGGACTATCTGATGAAGAATGCCGACTACTTCTCCAACATGTCACAGA
GGACTTTACCACCTACATTAACAGGAAGCGGAAAAACAATTGCCATGGCAACCACATTGAGATGCAGGCC
ATGGCAGAGATGTACAACCGTCTGTGGAGGTGTACCAGTACAGCACAGAACCCATCAACACATTCCATG
GGATACATCAAAAACGAGGACGAACCCATTTCGTGTAGCTACCATCGGAATATCCACTATAATTCAGTGGT
GAATCCTAACAAGGCCACCATTTGGTGTGGGGCTGGGCCTGCCATCATTCAAACAGGGTTTGCAGAGCAG
TCTCTGATGAAGAATGCCATAAAAAACATCGGAGGAGTCATGGATTGAACAGCAGATGCTAGAAGACAAGA
AACGGGCCACAGACTGGGAGGCCACAAATGAAGCCATCGAGGAGCAGGTGGCTCGGGAATCCTACCTGCA
GTGGTTGCGGGATCAGGAGAAACAGGCTCGCCAGGTCCGAGGCCAGCCAGCCCCGAAAGCCAGCGCC
ACATGCAGTTCGGCCACAGCAGCAGCCTCCAGTGGCCTGGAGGAGTGGACTAGCCGGTCCCCGCGGCAGC
GGAGTTCAGCCTCGTACCTGAGCACCTGAGCTGCATGCTGAATTGGGCATGAAGCCCCCTTCCCCAGG
CACTGTTTTAGCTCTTGCCAAACCTCCTTCGCCCTGTGCCAGGTACAAGCAGTCAGTTCTCGGCAGGG
GCCGACCGGCAACTTCCCCCTTGTGTCCTTACCCTGCTTTGGAGTGCCGGGCCCTCATTTCAGCAGA
TGTCCCCCTCTGCCTTTGGTCTGAATGACTGGGATGATGATGAGATCCTAGCTTCGGTGCTGGCAGTGTC
CCAACAGGAATACCTAGACAGTATGAAGAAAAACAAGTGACAGAGACCCGCCCCAGACAAGAGT

ACGCGTACGCGGCCGCTCGAGCAGAACTCATCTCAGAAGAGGATCTGGCAGCAATGATATCCTGGATT
ACAAGGATGACGACGATAAGGTTTAA



[View online »](#)

Protein Sequence: >RC226729 representing NM_001136159
Red=Cloning site Green=Tags(s)

MKEDGACLFRAVADQVYGDQDMHEVVRKHCM DYLMKNADYFSNYVTEDFTTYINRKRKNNCHGNHIEMQA
 MAEMYNRNPVEVYQYSTEPINTFFHGIHQNEDEPIRVSYHRNIHYNVVPNKATIGVGLGLPSFKPGFAEQ
 SLMKNAIKTSEESWIEQQMLEDKKRATDWEATNEAIEEQVARESYLQWLRDQEKQARQVRGSPQPRKASA
 TCSSATAAASSGLEEWTSRSPRQRSSASSPEHPHELHAELGMKPPSPGTVLALAKPPSPCAPGTSSQF SAG
 ADRATSPLVSLYPALECRALIQQMSPSAFGLNDWDDDEILASVLAVSQQEYLD SMKKNKVHRDPPDPKS

TRTRPLEQKLISEEDLAANDILDYKDDDDKV

Chromatograms: https://cdn.origene.com/chromatograms/mk8053_h07.zip

Restriction Sites: SgfI-MluI

Cloning Scheme:



ACCN: NM_001136159

ORF Size: 1047 bp

OTI Disclaimer: The molecular sequence of this clone aligns with the gene accession number as a point of reference only. However, individual transcript sequences of the same gene can differ through naturally occurring variations (e.g. polymorphisms), each with its own valid existence. This clone is substantially in agreement with the reference, but a complete review of all prevailing variants is recommended prior to use. [More info](#)

OTI Annotation: This clone was engineered to express the complete ORF with an expression tag. Expression varies depending on the nature of the gene.

Components: The ORF clone is ion-exchange column purified and shipped in a 2D barcoded Matrix tube containing 10ug of transfection-ready, dried plasmid DNA (reconstitute with 100 ul of water).

Reconstitution Method:

1. Centrifuge at 5,000xg for 5min.
2. Carefully open the tube and add 100ul of sterile water to dissolve the DNA.
3. Close the tube and incubate for 10 minutes at room temperature.
4. Briefly vortex the tube and then do a quick spin (less than 5000xg) to concentrate the liquid at the bottom.
5. Store the suspended plasmid at -20°C. The DNA is stable for at least one year from date of shipping when stored at -20°C.

RefSeq: [NM_001136159.2](#)

RefSeq ORF: 1050 bp

Locus ID: 55593

UniProt ID: [Q96G74](#)

Cytogenetics: Xp11.23

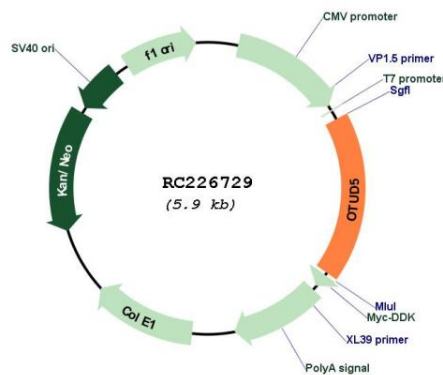
Protein Families: Protease

Protein Pathways: RIG-I-like receptor signaling pathway

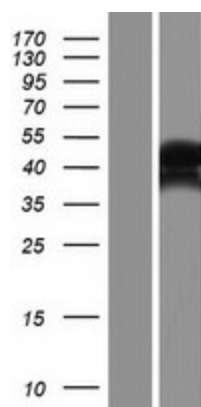
MW: 39 kDa

Gene Summary: This gene encodes a member of the OTU (ovarian tumor) domain-containing cysteine protease superfamily. The OTU domain confers deubiquitinase activity and the encoded protein has been shown to suppress the type I interferon-dependent innate immune response by cleaving the polyubiquitin chain from an essential type I interferon adaptor protein. Cleavage results in disassociation of the adaptor protein from a downstream signaling complex and disruption of the type I interferon signaling cascade. Alternatively spliced transcript variants encoding different isoforms have been described. [provided by RefSeq, Oct 2008]

Product images:



Circular map for RC226729



Western blot validation of overexpression lysate (Cat# [LY427832]) using anti-DDK antibody (Cat# [TA50011-100]). Left: Cell lysates from untransfected HEK293T cells; Right: Cell lysates from HEK293T cells transfected with RC226729 using transfection reagent MegaTran 2.0 (Cat# [TT210002]).