

## Product datasheet for **RC226726**

### **CPT1C (NM\_001136052) Human Tagged ORF Clone**

#### **Product data:**

Product Type:	Expression Plasmids
Product Name:	CPT1C (NM_001136052) Human Tagged ORF Clone
Tag:	Myc-DDK
Symbol:	CPT1C
Synonyms:	CATL1; CPT1-B; CPT1P; CPTI-B; CPTIC; SPG73
Mammalian Cell Selection:	Neomycin
Vector:	pCMV6-Entry (PS100001)
E. coli Selection:	Kanamycin (25 ug/mL)



[View online »](#)

**ORF Nucleotide Sequence:**

>RC226726 representing NM\_001136052  
 Red=Cloning site Blue=ORF Green=Tags(s)

TTTTGTAATACGACTCACTATAGGGCGGCCGGAATTCGTCGACTGGATCCGGTACCGAGGAGATCTGCC  
 GCC**CGGATCGCC**

ATGGCTGAAGCGCACCAGGCCGTGGCTTCCGACCTCGCTGACCTCGGACGGGGCTGAAGTGAAGTCA  
 GTGCCCTGTGCTGCAGGAGATCTACCTCTGGCCTGCGCTCCTGGAAAAGGCATCTCTCACGTTTCTG  
 GAATGACTTTCTCACCGGTGTGTTTCTGCCAGCCCCCTCAGTTGGCTTTTCTCTTTCAGTGCCATCCAG  
 CTTGCCTGGTTCCAGCTGGATCCTTCTTAGGACTGATGGAGAAGATCAAAGAGTTGCTGCCTGACT  
 GGGGTGGACAACACCACGGGCTCCGGGGGTCTGGCAGCCGCGCTGTTTGCCTCGTGTTTGGGGAGC  
 CCTGATCTTCACTGCACGTGGCCCTGAGGCTGCTTCTGTCTACCACGGCTGGCTTCTGAGCCCCAC  
 GGAGCCATGTCTCCCCACCAAGACCTGGCTGGCCCTGGTCCGCATCTTCTGCGCCGCCACCCGATGC  
 TGTTCACTTACCAGCGCTCCCTGCCACGCCAGCCCGTCCCTCTGTGCAGGACACCGTGCACAAGTACCT  
 GGAGTCGGTCCGGCCATCCTCTCCGACGAGGACTTCGACTGGACCGCGTCTGGCGCAGGAATTCCTG  
 AGGCTGCAGGCGTCTGCTGCAGTGGTACCTGCGGCTCAAGTCTGGTGGGCGTCCAATTATGTCAGTG  
 ACTGGTGGGAGGAATTTGTGTACCTGCGCTCCCGAAATCCGCTGATGGTGAACAGCAACTATTACATGAT  
 GGCAGCTCGCGCTGGAAATGCCGTCCATGCCCTCCTCTGTACCGCCACCGCCTGAACCGCCAGGAGATA  
 CCCCCGACTTTGCTGATGGGAATGCGCCCTTATGCTCTGCCAGTACGAGAAGATCTTCAACACCACGC  
 GGATTCAGGGGTCCAAAAGACTACATCCGCCACCTCCATGACAGCCAACACGTGGCTGTCTTCCACCG  
 GGGCCGATTCTCCGCATGGGGACCCACTCCCGAAACAGCCTGCTTCCCGAGAGCCCTGGAGCAGCAG  
 TTTCAAGAAATCCTGGATGATCCCTCACCGGCTGCCCCACGAGGAACATCTGGCAGCTGACAGCTG  
 CTCCCAGGGGCAGTGGGCCAGGTGCGGACATCCCTGAAGACCCAGGCAGCGGAGCCCTGGAGCGGT  
 GGAAGGGCCGCTTTCTTTGTGTCACTGGATGCTGAGCCCGGGGCTCACAGGGAGGACCCGGCAGCG  
 TCGTTGGATGCCTACGCCATGTCTGTGCGCCGCGGGCCATGATCGCTGGTTTGACAAATCCTTCA  
 CCTAATCGTCTTCTCTAACGGGAAGCTGGGCCTCAGCGTGGAGCACTCCTGGGCCGACTGCCCCATCTC  
 AGGACACATGTGGGAGTTCACCTGTGCTACAGAATGCTTTCAGCTGGGCTACTCAACAGACGGCCACTGC  
 AAGGGCACCCGGACCCCACTACCCAGCCCGAGCGGTGCAATGGGACCTTCCAGACCAGATCCACT  
 CCTCCATCTCTAGCCCTGAGGGGAGCCAAGATCTTGTCTGAAAATGTCGACTGCCATGTCGTTCCATT  
 CTCCCTATTTGGCAAGAGCTTCATCCGACGCTGCCACCTCTTTCAGACAGCTTCATCCAGATCGCCTG  
 CAACTGGCCCACTCCGGGACAGGGTCAATTCTGCCTGACTTATGAGTCGGCCATGACTCGCTTATTCC  
 TGGAAGGCCGGACGGAGACGGTGCAGTCTTGCACGAGGGAGGCCTGCAACTTTGTAGGGCCATGGAGGA  
 CAAAGAGAAGACGGACCCACAGTGCCTCGCCCTGTTCCGCGTGGCAGTGGACAAGCACCAGGCTCTGCTG  
 AAGGCAGCCATGAGCGGGCAGGGAGTTGACCGCCACCTGTTTGCCTGTACATCGTGTCCCGATTCTCC  
 ACCTGCAGTCGCCCTTCTGACCCAGGTCCATTCCGAGCAGTGGCAGCTGTCCACCAGCCAGATCCCTGT  
 TCAGCAAATGCATCTGTTTACGCTCCACAATTACCCGACTATGTTTCTCAGGCGGTGGATTCCGGCCT  
 GCTGATGACCATGGTTATGGTGTTCCTTATATCTTTCATGGGGATGGCATGATCACCTTCCACATCTCCA  
 GCAAAAAATCAAGCACAACAAACGGATCCACAGGCTGGGGCAGCACATTGAGGACGCACTGCTGGATG  
 GGCCTCCCTGTTCCAGGCGGGACAGCATTTTAAGCGCCGTTTTCAGAGGGTCAGGGAAGGAGAAGTCCAGG  
 CACAGGTGGATTCTCTCCCGCCAGACTGGGGCCTCAAGCCCTCAATGACATCCACCGACTTC

**ACGCGT**ACGCGGCCGCTCGAGCAGAACTCATCTCAGAAGAGGATCTGGCAGCAAATGATATCCTGGATT  
 ACAAGGATGACGACGATAAGGTTTAA

**Protein Sequence:**

>RC226726 representing NM\_001136052  
 Red=Cloning site Green=Tags(s)

MAEAHQAVGFRPSLTS DGA EVEL SAPVLQEIYLSGLRSWKRHLSRFW NDFLTGVFPASPLSWLFLFSAIQ  
 LAWFLQLDPSLGLMEKIKELLPDWGGQHHGLRGVLAALFASCLWGALIFTLHVALRLLLSYHGWLLEPH  
 GAMSSPTKTWLALVRIFSGRHPMLFSYQRSLPRQPVPSVQDTRKYLESVRPILSDEDFDWTAVLAQEFL  
 RLQASLLQWYLR LKSWWASNYVSDWEEFVYLR SRNPLMVNSNYMMAARAGNAVHALLLYRHRLNRQEI  
 PPTLLMGM RPLCSAQYEKIFNTTRIPGVQKDYIRHLHDSQH VAVFHRGRFFRMGTHSRNSLLSPRALEQQ  
 FQRILDDPSPACPHEEHLAALTAAPRGTWAQVRTSLKTQAAEAL EAVEGAFFVSLDAEPAGLTREDPAA  
 SLDAYAHALLAGRGHDFDKSFTLIVFSNGKLG L SVEHSWADCPISGHMWEFTLATECFQLGYSTDGHC  
 KGHPDPTLPQPQLQWDL PDQIHSSISLALRGAKILSENVDCHVVPFSLFGKSFIRRHLS SDFSFIQIAL  
 QLAHFRDRGQFCLTYESAMTRLFLEGR TETVRSC TREACNFVRAMEDKEKTD PQCLALFRVAVDKHQALL  
 KAAMSGQGVD RHLFALYIVSRFLHLQSPFLTQVHSEQWQLSTSQIPVQMMHLFDVHNYPDYVSSGGGFGP  
 ADDHGYGVSYIFMGDMITFHISKKSSKT DSHRLGQHIEDALLDVASL FQAGQHFKRFRGSGKENS R  
 HRCGFLSRQTGASKASMTSTDF

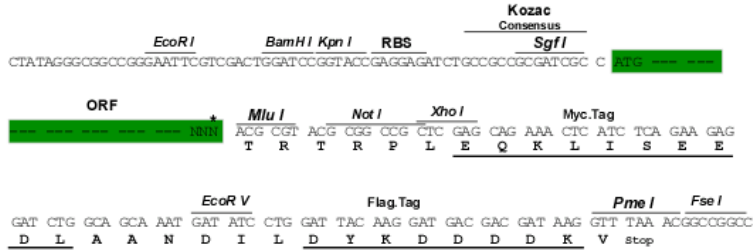
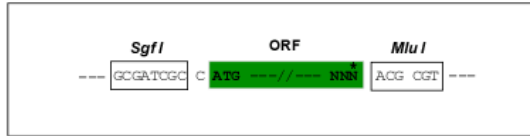
TRTRPLEQKLI SEEDLAANDILDYKDDDDKV

**Restriction Sites:**

Sgfl-MluI

Cloning Scheme:

Cloning sites used for ORF Shuttling:



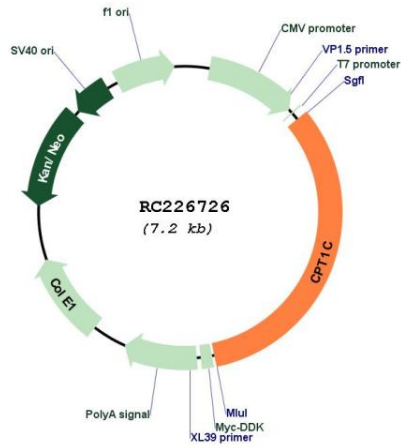
\* The last codon before the Stop codon of the ORF

ACCN: NM\_001136052

ORF Size: 2376 bp

<b>OTI Disclaimer:</b>	<p>Due to the inherent nature of this plasmid, standard methods to replicate additional amounts of DNA in E. coli are highly likely to result in mutations and/or rearrangements. Therefore, OriGene does not guarantee the capability to replicate this plasmid DNA. Additional amounts of DNA can be purchased from OriGene with batch-specific, full-sequence verification at a reduced cost. Please contact our customer care team at <a href="mailto:custsupport@origene.com">custsupport@origene.com</a> or by calling 301.340.3188 option 3 for pricing and delivery.</p> <p>The molecular sequence of this clone aligns with the gene accession number as a point of reference only. However, individual transcript sequences of the same gene can differ through naturally occurring variations (e.g. polymorphisms), each with its own valid existence. This clone is substantially in agreement with the reference, but a complete review of all prevailing variants is recommended prior to use. <a href="#">More info</a></p>
<b>OTI Annotation:</b>	This clone was engineered to express the complete ORF with an expression tag. Expression varies depending on the nature of the gene.
<b>Components:</b>	The ORF clone is ion-exchange column purified and shipped in a 2D barcoded Matrix tube containing 10ug of transfection-ready, dried plasmid DNA (reconstitute with 100 ul of water).
<b>Reconstitution Method:</b>	<ol style="list-style-type: none"> <li>1. Centrifuge at 5,000xg for 5min.</li> <li>2. Carefully open the tube and add 100ul of sterile water to dissolve the DNA.</li> <li>3. Close the tube and incubate for 10 minutes at room temperature.</li> <li>4. Briefly vortex the tube and then do a quick spin (less than 5000xg) to concentrate the liquid at the bottom.</li> <li>5. Store the suspended plasmid at -20°C. The DNA is stable for at least one year from date of shipping when stored at -20°C.</li> </ol>
<b>RefSeq:</b>	<a href="#">NM_001136052.3</a>
<b>RefSeq Size:</b>	2853 bp
<b>RefSeq ORF:</b>	2379 bp
<b>Locus ID:</b>	126129
<b>UniProt ID:</b>	<a href="#">Q8TCG5</a>
<b>Cytogenetics:</b>	19q13.33
<b>Protein Families:</b>	Druggable Genome, Transmembrane
<b>Protein Pathways:</b>	Adipocytokine signaling pathway, Fatty acid metabolism, PPAR signaling pathway
<b>MW:</b>	89.7 kDa
<b>Gene Summary:</b>	This gene encodes a member of the carnitine/choline acetyltransferase family. The encoded protein regulates the beta-oxidation and transport of long-chain fatty acids into mitochondria, and may play a role in the regulation of feeding behavior and whole-body energy homeostasis. Alternatively spliced transcript variants encoding multiple protein isoforms have been observed for this gene. [provided by RefSeq, Dec 2010]

Product images:



Circular map for RC226726