

Product datasheet for **RC226724**

RPS24 (NM_001142285) Human Tagged ORF Clone

Product data:

Product Type:	Expression Plasmids
Product Name:	RPS24 (NM_001142285) Human Tagged ORF Clone
Tag:	Myc-DDK
Symbol:	RPS24
Synonyms:	DBA3; eS24; S24
Mammalian Cell Selection:	Neomycin
Vector:	pCMV6-Entry (PS100001)
E. coli Selection:	Kanamycin (25 ug/mL)
ORF Nucleotide Sequence:	>RC226724 representing NM_001142285 Red=Cloning site Blue=ORF Green=Tags(s)

TTTTGTAATACGACTCACTATAGGGCGCCGGGAATTCGTCGACTGGATCCGGTACCGAGGAGATCTGCC
GCC**CGGATCGCC**

ATGAACGACACCGTAACTATCCGCACTAGAAAGTTCATGACCAACCGACTACTTCAGAGGAAACAAATGG
TCATTGATGTCCTTACCCCGGGAAGGCGACAGTGCCTAAGACAGAAATTCGGGAAAACTAGCCAAAAT
GTACAAGACCACCCGGATGTCACTTTGTATTGGATTGAGAACTCATTTTGGTGGTGGCAAGACAAC
GGCTTTGGCATGATTTATGATTCCTGGATTATGCAAAGAAAAATGAACCAACATAGACTTGCAAGAC
ATGGCCTGTATGAGAAGAAAAAGACCTCAAGAAAGCAACGAAAGGAACGCAAGAACAGAATGAAGAAAGT
CAGGGGGACTGCAAAGGCCAATGTTGGTGTGGCAAAAAGATGAGGGAATGGGGCTGGAGTGCAAGCA
TTGGGAAGAATTTCCAGGAAGAGAGATGCACAGATGTGAAGAACTCGAAGGCAAGAGAAAAGCCGGGGG
TTGTGTGGCAGGTAGAAGTGCCAGGACCGTGGAGCGTGTGGACATGTGGCAGATTGCGGAGGGGCTGTGG
CAAGTATTTACAGGTGGCCGTTACCTGGAGGAAGACTGAAAACAGAGAACAGTGTGCCAGGCGTGCCTT
TTGGAGAGGGCACTGGTCAGAAACGGAGCCTTCATGTCGCCTGCCTCACCTGCTCCTGCTGGTTCTCCCC
ACCCTGTGGACGGTGACTTGGTCTCCTTCCACTTGCAGAAAGCCTTGTGAGCAACCTTGACTCTGTACCCCCA
CATCCAGGCCATCAACAAGTCTTTGGCCCTTTCTTTGAAATCCACCAGGAATCCAGCTGCTTCTCCCCA
CCTTCTGCCTCTCTGGTCTGGCCAC

ACGCGTACGCGGGCCGCTCGAGCAGAAACTCATCTCAGAAGAGGATCTGGCAGCAAATGATATCCTGGATT
ACAAGGATGACGACGATAAGGTTTAA



[View online »](#)

Protein Sequence: >RC226724 representing NM_001142285
Red=Cloning site Green=Tags(s)

MNDTVTIRTRKFMNRLQLRKQMVIDLHPGKATVPKTEIREKLAKMYKTPDVIFVFGFRTHFGGGKTT
 GFGMIYDSL DYAKKNEPKHRLARHGLYEKKTSRKQRKERKNRMKKVVRTAKANVGAGKKMRELGLGVQA
 LGRISQEERCTDVKNSKARESRGVVWQVEVPGPWSVWTCGRLRRGCGKYLQVAVTWRKTENREQCCQACL
 LERALVRNGAFMSPASPAPAGSPHPVDGDLVLHLPEALSATLTLSPHIQAINKSFGPFFEIHQESSCFSP
 PSCLSGLGH

TRTRPLEQKLISEEDLAANDILDYKDDDDKV

Chromatograms: https://cdn.origene.com/chromatograms/mk8049_g05.zip

Restriction Sites: SgfI-MluI

Cloning Scheme:



ACCN: NM_001142285

ORF Size: 867 bp

OTI Disclaimer: The molecular sequence of this clone aligns with the gene accession number as a point of reference only. However, individual transcript sequences of the same gene can differ through naturally occurring variations (e.g. polymorphisms), each with its own valid existence. This clone is substantially in agreement with the reference, but a complete review of all prevailing variants is recommended prior to use. [More info](#)

OTI Annotation: This clone was engineered to express the complete ORF with an expression tag. Expression varies depending on the nature of the gene.

Components: The ORF clone is ion-exchange column purified and shipped in a 2D barcoded Matrix tube containing 10ug of transfection-ready, dried plasmid DNA (reconstitute with 100 ul of water).

Reconstitution Method:

1. Centrifuge at 5,000xg for 5min.
2. Carefully open the tube and add 100ul of sterile water to dissolve the DNA.
3. Close the tube and incubate for 10 minutes at room temperature.
4. Briefly vortex the tube and then do a quick spin (less than 5000xg) to concentrate the liquid at the bottom.
5. Store the suspended plasmid at -20°C. The DNA is stable for at least one year from date of shipping when stored at -20°C.

RefSeq: [NM_001142285.2](#)

RefSeq ORF: 870 bp

Locus ID: 6229

UniProt ID: [P62847](#)

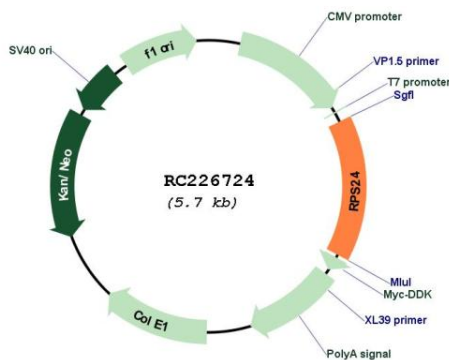
Cytogenetics: 10q22.3

Protein Pathways: Ribosome

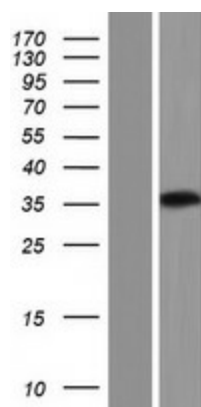
MW: 32.3 kDa

Gene Summary: Ribosomes, the organelles that catalyze protein synthesis, consist of a small 40S subunit and a large 60S subunit. Together these subunits are composed of 4 RNA species and approximately 80 structurally distinct proteins. This gene encodes a ribosomal protein that is a component of the 40S subunit. The protein belongs to the S24E family of ribosomal proteins. It is located in the cytoplasm. Multiple transcript variants encoding different isoforms have been found for this gene. As is typical for genes encoding ribosomal proteins, there are multiple processed pseudogenes of this gene dispersed through the genome. Mutations in this gene result in Diamond-Blackfan anemia. [provided by RefSeq, Nov 2008]

Product images:



Circular map for RC226724



Western blot validation of overexpression lysate (Cat# [LY428008]) using anti-DDK antibody (Cat# [TA50011-100]). Left: Cell lysates from untransfected HEK293T cells; Right: Cell lysates from HEK293T cells transfected with RC226724 using transfection reagent MegaTran 2.0 (Cat# [TT210002]).