

Product datasheet for **RC226713**

LSS (NM_001145436) Human Tagged ORF Clone

Product data:

Product Type:	Expression Plasmids
Product Name:	LSS (NM_001145436) Human Tagged ORF Clone
Tag:	Myc-DDK
Symbol:	LSS
Synonyms:	APMR4; CTRCT44; HYPT14; OSC
Mammalian Cell Selection:	Neomycin
Vector:	pCMV6-Entry (PS100001)
E. coli Selection:	Kanamycin (25 ug/mL)



[View online »](#)

ORF Nucleotide
Sequence:

>RC226713 representing NM_001145436
 Red=Cloning site Blue=ORF Green=Tags(s)

TTTTGTAATACGACTCACTATAGGGCGGCCGGGAATTCGTCGACTGGATCCGGTACCGAGGAGATCTGCC
 GCCGCGATCGCC

ATGACGGAGGGCACGTGTCTGCGCGCCGAGGGGGCCCTACAAGACCGAGCCCGCCACCGACTCGGCC
 GCTGGCGACTCAACTGCGAGAGGGGCGCGCAGAGTGGACCTACCTGCAGGACGAGCGCGCCGGCCGCGA
 GCAGACCGGCTGGAAGCCTACGCCCTGGGGCTGGACACCAAGAATTACTTTAAGGACTTGCCCAAAGCC
 CACACCGCCTTTGAGGGGCTCTGAACGGGATGACATTTTACGTGGGGCTGCAGGCTGAGGATGGGCACT
 GGACGGGTGATTATGGTGGCCACTTTTCTCCTGCCAGGCCTCCTGATCACTTGCCACGTGGCAGCAT
 CCCTCTGCCAGCCGATACAGAGAAGAGATTGTGCGGTACCTGCGGCACATTGAGGATAAGTCCACCGTG
 TTTGGGACTGCGCTCAACTATGTGTCTCTCAGAATTCTGGGTGTTGGGCCTGACGATCCTGACCTGGTAC
 GAGCCCGAACATTCTTACAAGAAAGGTGGTGTGTGGCCATCCCTCCTGGGGAAAGTCTGGCTGGC
 TGTCTGAATGTTTACAGCTGGGAAGGCCTCAATACCCTGTTCCAGAGATGTGGCTGTTTCTGACTGG
 GCACCGGCACACCCCTCCACACTCTGGTGCACCTGCGCGCAGGTGTACCTGCCATGAGCTACTGCTACG
 CCGTTCGGCTGAGTGCCCGGAAGACCCGCTGGTCCAGAGCCTCCGCCAGGAGCTCTATGTGGAGGACTT
 CGCCAGCATTGACTGGCTGGCGCAGAGGAACAACGTGGCCCCGACGAGCTGTACACGCCGCACAGCTGG
 CTGCTCCGCGTGTATATGCGCTCCTCAACCTGTATGAGCACCACCACAGTGCCACCTGCGGCAGCGGG
 CCGTGCAGAAGCTGTATGAACACATTGTGGCCGACGACCGATTACCAAGAGCATCAGCATCGGCCCGAT
 CTGAAAACCATCAACATGCTTGTGCGCTGGTATGTGGACGGGCCCGCCTCCACTGCCTTCCAGGAGCAT
 GTCTCCAGAATCCCGACTATCTCTGGATGGGCCTTACGGCATGAAAATGCAGGGCACCACAGCCCGAGTTTC
 AGATCTGGGACACCGCATTCCGCATCCAGGCTCTGCTTGGGCGGGCGGGCACCACAGCCCGAGTTTC
 GTCTGCCTGCAGAAGGCTCATGAGTTCCTGAGGCTCTCACAGGTCCAGATAACCCTCCCGACTACCAG
 AAGTACTACCGCCAGATGCGCAAGGGTGGCTTCTCCTCAGTACGCTGGACTGCGGCTGGATCGTTTCTG
 ACTGCACGGCTGAGGCCTTGAAGGCTGTGCTGCTCCTGCAGGAGAAGTGTCCCATGTACCCGAGCACAT
 CCCCAGAGAACGGCTCTGCGATGCTGTGGCTGTGCTGCTGAACATGAGAAATCCAGATGGAGGGTTCGCC
 ACCTATGAGACCAAGCGTGGGGGCACTTGTGGAGCTGCTGAACCCCTCGGAGGTCTTCGGGGACATCA
 TGATTGACTACACCTATGTGGAGTGCACCTCAGCCGTGATGCAGGCGCTTAAGTATTTCCACAAGCGTTT
 CCCGGAGCACAGGGCAGCGGAGATCCGGGAGACCCTCACGAGGGCTTAGAGTTCTGTGCGCGGCAGCAG
 AGGGCCGATGGCTCCTGGGAAGGCTCCTGGGGAGTTTGTTCACCTACGGCACCTGGTTTGGCCTGGAGG
 CCTTCGCCTGTATGGGGCAGACCTACCGAGATGGGACTGCCTGTGCAGAGGTCTCCCGGGCCTGTGACTT
 CCTGCTGTCCCGCAGATGGCAGACGGAGGCTGGGGGGAGGACTTTGAGTCTGCAGGAGCGGCGTTAT
 TTGAGAGTGGCCAGTCCAGATCCATAACACATGCTGGGCCATGATGGGGCTGATGGCCGTTTCGGCATC
 CTGACATCGAGGCCAGGAGAGAGGAGTCCGGTGTCTACTTGAGAAACAGCTCCCCAATGGCGACTGGCC
 GCAGGAAAACATTGCTGGGGTCTTCAACAAGTCTGTGCCATCTCCTACACGAGCTACAGGAACATCTTC
 CCCATCTGGGCCCTCGGCCGCTTCTCCAGCTGTACCTGAGAGAGCCCTTGTGGCCACCCC

ACGCGTACGCGGCCGCTCGAGCAGAACTCATCTCAGAAGAGGATCTGGCAGCAAATGATATCCTGGATT
 ACAAGGATGACGACGATAAGGTTTAA

Protein Sequence: >RC226713 representing NM_001145436
 Red=Cloning site Green=Tags(s)

MTEGTCLRRRGGPYKTEPATDLGRWRLNCERGRQTWTYLQDERAGREQTGLEAYALGLDTKNYFKDLPKA
 HTAFEGALNGMTFYVGLQAEDGHWTGDYGGPLFLLPGLLITCHVARIPLPAGYREEIVRYLRHIEDKSTV
 FG TALNYYSLRILGVGPDDPDLVRARNILHKKGGAVAIPSWGKFWLAVLNVYSWEGLNTLFPBMWLFPDW
 APAHPSTLWCHCRQVYLPMSYCYAVRLSAAEDPLVQSLRQELYVEDFASIDWLAQRNNVAPDELYTPHSW
 LLRVVYALLNLYEHHS AHLRQRAVQKLYEHIVADDRFTKSISIGPISKINMLVRWYVDGPASTAFQEH
 VSRIPDYLLWGLDGMKMQGTNGSQIWDTAF AIQALLEAGGHRPEFSSCLQKAHEFLRLSQVPDNPDPYQ
 KYRQMRKGGFSFSTLDCGWIVSDCTAEALKAVLLLQEKCPHVTEHIPRERLCAVAVLLNMRNPDGGFA
 TYETKRGHLLLELLNPSEVFGDIMIDYTYVECTSAVMQALKYFHKRFPEHRAAEIRETLTQGLEFCRRQQ
 RADGSWEGSWGVCFTYGTWFGLEAFACMGQTYRDGTACA EVSRACDFLLSRQADGGWGEDFESCEERRY
 LQSAQSQIHNTCWAMMGLMAVRHPDIEAQERGVRCLEKQLPNGDWPQENIAGVFNKSCAISYTSYRNIF
 PIWALGRFSQLYPERALAGHP

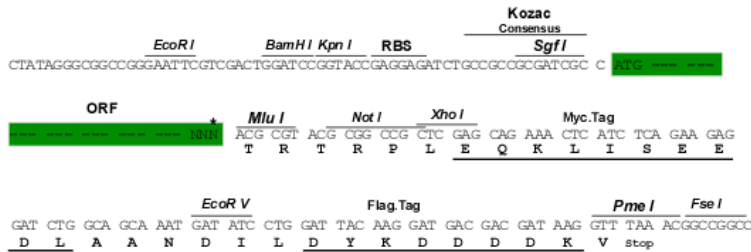
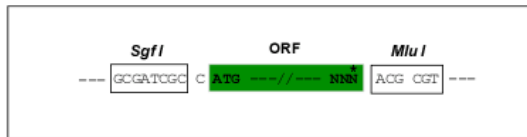
TRTRPLEQKLI SEEDLAANDILDYKDDDDKV

Restriction Sites:

SgfI-MluI

Cloning Scheme:

Cloning sites used for ORF Shuttling:



* The last codon before the Stop codon of the ORF

ACCN: NM_001145436

ORF Size: 2163 bp

OTI Disclaimer: The molecular sequence of this clone aligns with the gene accession number as a point of reference only. However, individual transcript sequences of the same gene can differ through naturally occurring variations (e.g. polymorphisms), each with its own valid existence. This clone is substantially in agreement with the reference, but a complete review of all prevailing variants is recommended prior to use. [More info](#)

OTI Annotation: This clone was engineered to express the complete ORF with an expression tag. Expression varies depending on the nature of the gene.

Components: The ORF clone is ion-exchange column purified and shipped in a 2D barcoded Matrix tube containing 10ug of transfection-ready, dried plasmid DNA (reconstitute with 100 ul of water).

Reconstitution Method:

1. Centrifuge at 5,000xg for 5min.
2. Carefully open the tube and add 100ul of sterile water to dissolve the DNA.
3. Close the tube and incubate for 10 minutes at room temperature.
4. Briefly vortex the tube and then do a quick spin (less than 5000xg) to concentrate the liquid at the bottom.
5. Store the suspended plasmid at -20°C. The DNA is stable for at least one year from date of shipping when stored at -20°C.

RefSeq: [NM_001145436.2](#)

RefSeq ORF: 2166 bp

Locus ID: 4047

UniProt ID: [P48449](#)

Cytogenetics: 21q22.3

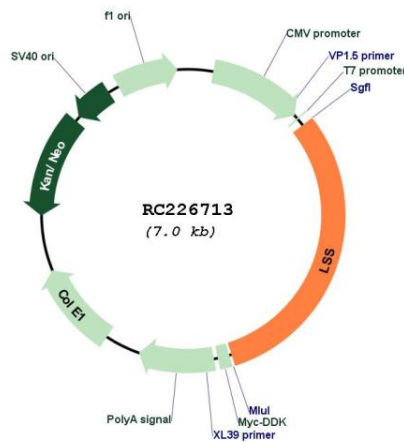
Protein Families: Druggable Genome

Protein Pathways: Metabolic pathways, Steroid biosynthesis

MW: 82 kDa

Gene Summary: The protein encoded by this gene catalyzes the conversion of (S)-2,3 oxidosqualene to lanosterol. The encoded protein is a member of the terpene cyclase/mutase family and catalyzes the first step in the biosynthesis of cholesterol, steroid hormones, and vitamin D. Alternative splicing results in multiple transcript variants encoding different isoforms. [provided by RefSeq, Feb 2009]

Product images:



Circular map for RC226713