

Product datasheet for **RC226700**

EVPLL (NM_001145127) Human Tagged ORF Clone

Product data:

Product Type:	Expression Plasmids
Tag:	Myc-DDK
Symbol:	EVPLL
Mammalian Cell Selection:	Neomycin
Vector:	pCMV6-Entry (PS100001)
E. coli Selection:	Kanamycin (25 ug/mL)

ORF Nucleotide Sequence: >RC226700 representing NM_001145127
Red=Cloning site Blue=ORF Green=Tags(s)

TTTTGTAATACGACTCACTATAGGGCGGCCGGGAATTCGTCGACTGGATCCGGTACCGAGGAGATCTGCC
GCC**CGGATCGCC**

ATGCAAGCCAGCGCCGACCAGGTGGAGCGGGACATCCTGGAGACGCAGAAGAGGCTGCAGCAGGACCGGC
TGAACAGTGAGCAGAGCCAGGCCCTGCAGCACCAGCAGGAGACGGCAGCAGCCTGAAGGAGCCGAGGT
GCTGCTCAAGGACCTCTTCTGGACGTGGACAAGGCCCGCGGCTCAAGCACCCGAGGCTGAGGAGACT
GAGAAGGACATCGAGCAGCTGCACGAGCGGGTACCCAGGAGTGTGCGGAGTACTGTGCCCTGTACGAGA
AGATGGTGTGCCGCCCGACGTGGGATCCAAGGTCGACTGGGCACACGTGCTGGAGCAGAAACAGAAGC
TGCTGCGCAGGCCAGTATGGGCCGGCATGGCGGAGCTGGAGGAACAGATCGCGGAGCTCAACATCGT
GCAGAAGGAGATCAACGACCAAGGAGAGCAGCTGCGGAGCCTGGTGGGGCCGGATGCCGCCACCATCCGG
AGCCAATACCGAGACCTACTGAGGGCGGCGTCTGGCGCGGGCAGAGCCTGGGCAGCCTGTACACGCACT
GCAGGGCTGCACGTGGCAGCTGAGCGCCCTGGCGGAGCAGCAGCGCCGATCCTGCAGCAGGACTGGAGC
GACCTCATGGCCGACCTGCGGGCGTGGCGGGAATACGAGCACTTCAAGCAGCACGAGCTGCTGAGCC
AGGAGCAGAGCGTAAACCAGCTGGAGGAGGACGCAAGCGCATGGTGGAGCTGCGGCACCCCGCGGTGGG
GCCATCCAGGCCACAGGAGGCCCTGAAGATGGAGTGGCAGAACTTCTGAACCTGTGCATCTGCCAG
GAGACCCAGCTCCAGCAGTGGAGGACTACAGCCGGATTCTGTGTCCATCTTCTCTCTCAT

ACGCGTACGCGGCCGCTCGAGCAGAACTCATCTCAGAAGAGGATCTGGCAGCAAATGATATCCTGGATT
ACAAGGATGACGACGATAAGGTTTAA



Protein Sequence: >RC226700 representing NM_001145127
 Red=Cloning site Green=Tags(s)

MQASADQVERDILETQKRLQQDRLNSEQSQALQHQQETGSSSLKEAEVLLKDLFLDVKARRLKHPQAEET
 EKDIEQLHERVTQECAEYCALYEKMLVPPRRGIQGR LGTRAGAETEAGLRPVPVWAGHGAGGTRGAQHR
 AEGDQRRRAAAEPGGAGCRHHPEPIPRPTEGGVVARAEPGQPVHALQGCTWQLSALAEQQRRLQQDWS
 DLMADPAGVRRREYEHFKQHELLSQEQSVNQLLEEDGKRMVELRHPAVGPIQAHQEALKMEWQNFLNLICICQ
 ETQLQHVVEDYSRILCPSSSPH

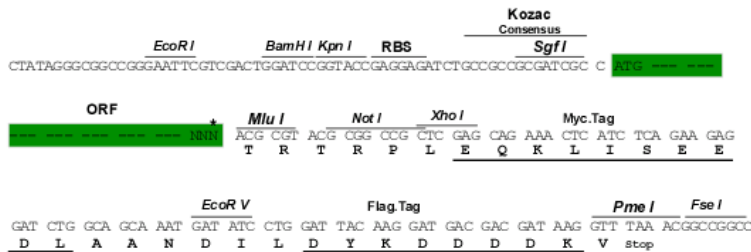
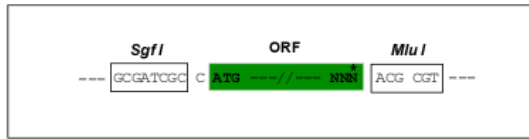
TRTRPLEQKLI SEEDLAANDILDYKDDDDKV

Chromatograms: https://cdn.origene.com/chromatograms/mk8031_e06.zip

Restriction Sites: SgfI-MluI

Cloning Scheme:

Cloning sites used for ORF Shuttling:



* The last codon before the Stop codon of the ORF

ACCN: NM_001145127

ORF Size: 903 bp

OTI Disclaimer: The molecular sequence of this clone aligns with the gene accession number as a point of reference only. However, individual transcript sequences of the same gene can differ through naturally occurring variations (e.g. polymorphisms), each with its own valid existence. This clone is substantially in agreement with the reference, but a complete review of all prevailing variants is recommended prior to use. [More info](#)

OTI Annotation: This clone was engineered to express the complete ORF with an expression tag. Expression varies depending on the nature of the gene.

Components: The ORF clone is ion-exchange column purified and shipped in a 2D barcoded Matrix tube containing 10ug of transfection-ready, dried plasmid DNA (reconstitute with 100 ul of water).

- Reconstitution Method:**
1. Centrifuge at 5,000xg for 5min.
 2. Carefully open the tube and add 100ul of sterile water to dissolve the DNA.
 3. Close the tube and incubate for 10 minutes at room temperature.
 4. Briefly vortex the tube and then do a quick spin (less than 5000xg) to concentrate the liquid at the bottom.
 5. Store the suspended plasmid at -20°C. The DNA is stable for at least one year from date of shipping when stored at -20°C.

Note: Plasmids are not sterile. For experiments where strict sterility is required, filtration with 0.22um filter is required.

RefSeq: [NM_001145127.2](#)

RefSeq ORF: 906 bp

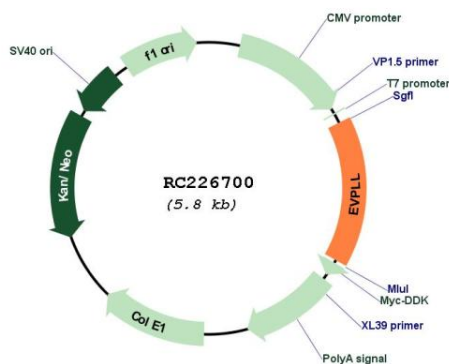
Locus ID: 645027

UniProt ID: [A8MZ36](#)

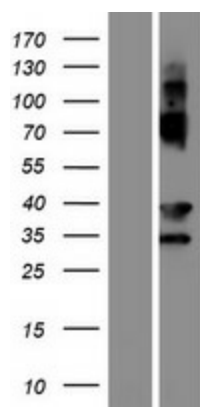
Cytogenetics: 17p11.2

MW: 33.8 kDa

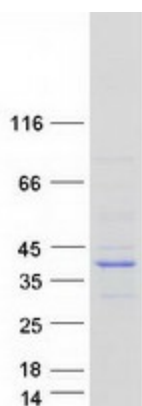
Product images:



Circular map for RC226700



Western blot validation of overexpression lysate (Cat# [LY428709]) using anti-DDK antibody (Cat# [TA50011-100]). Left: Cell lysates from un-transfected HEK293T cells; Right: Cell lysates from HEK293T cells transfected with RC226700 using transfection reagent MegaTran 2.0 (Cat# [TT210002]).



Coomassie blue staining of purified EVPLL protein (Cat# [TP326700]). The protein was produced from HEK293T cells transfected with EVPLL cDNA clone (Cat# RC226700) using MegaTran 2.0 (Cat# [TT210002]).